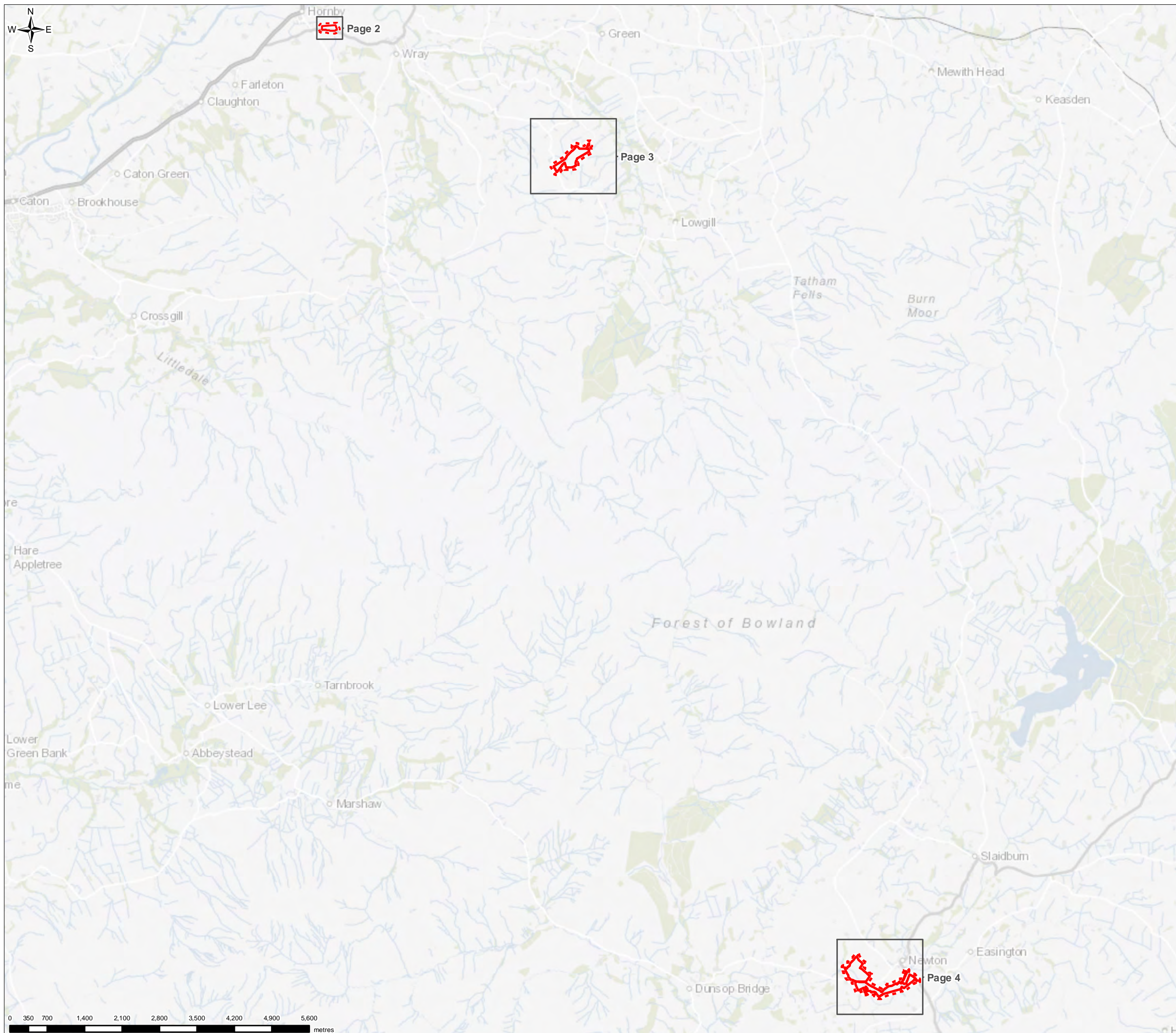


FIGURE 9A.6



- Legend**
- Compound location
 - Compound location - 50m buffer
 - Page and page number



0	MK	MW	LS	Initial Issue	30/03/2021
VERSION	AUTH	CHRD	REVD	REASON FOR ISSUE	DATE



UNITED UTILITIES WATER LIMITED
 HAWESWATER AQUEDUCT RESILIENCE PROGRAMME
 HEDGEROW ASSESSMENT PLAN
 BOWLAND SECTION
 PAGE 1 of 4

SCALE 1:68,900	SHEET SIZE A3
DRAWING NUMBER LCC_RVBC-BO-FIG-009-01-06	REVISION 0

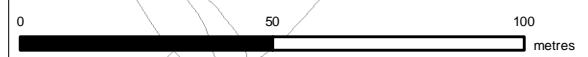
The copyright of this document, which contains information of a proprietary nature, is vested in United Utilities Water Limited. The content of this document may not be used for purposes other than that for which it has been supplied and may not be reproduced, either wholly or in part, in any way whatsoever. It may not be used by, or its contents divulged to any other person whatsoever without the prior written permission of United Utilities Water Limited. Copyright Acknowledgement: Use of Ordnance Survey map data sanctioned by the controller of H.M. Stationery Office. OS Licence Number 100019326. Crown copyright reserved. Unauthorised production infringes copyright. Contains OS data © Crown copyright and database right 2021.



FIGURE 9A.6

Legend

- Wray compound
- Wray compound - 50m buffer
- Existing Hedgerows**
- ||||| Native species-rich intact hedge



0	MK	MW	LS	Initial Issue	30/03/2021
VERSION	AUTH	CHKD	REVD	REASON FOR ISSUE	DATE



UNITED UTILITIES WATER LIMITED
 HAWESWATER AQUEDUCT RESILIENCE PROGRAMME
 HEDGEROW ASSESSMENT PLAN
 BOWLAND SECTION
 PAGE 2 of 4

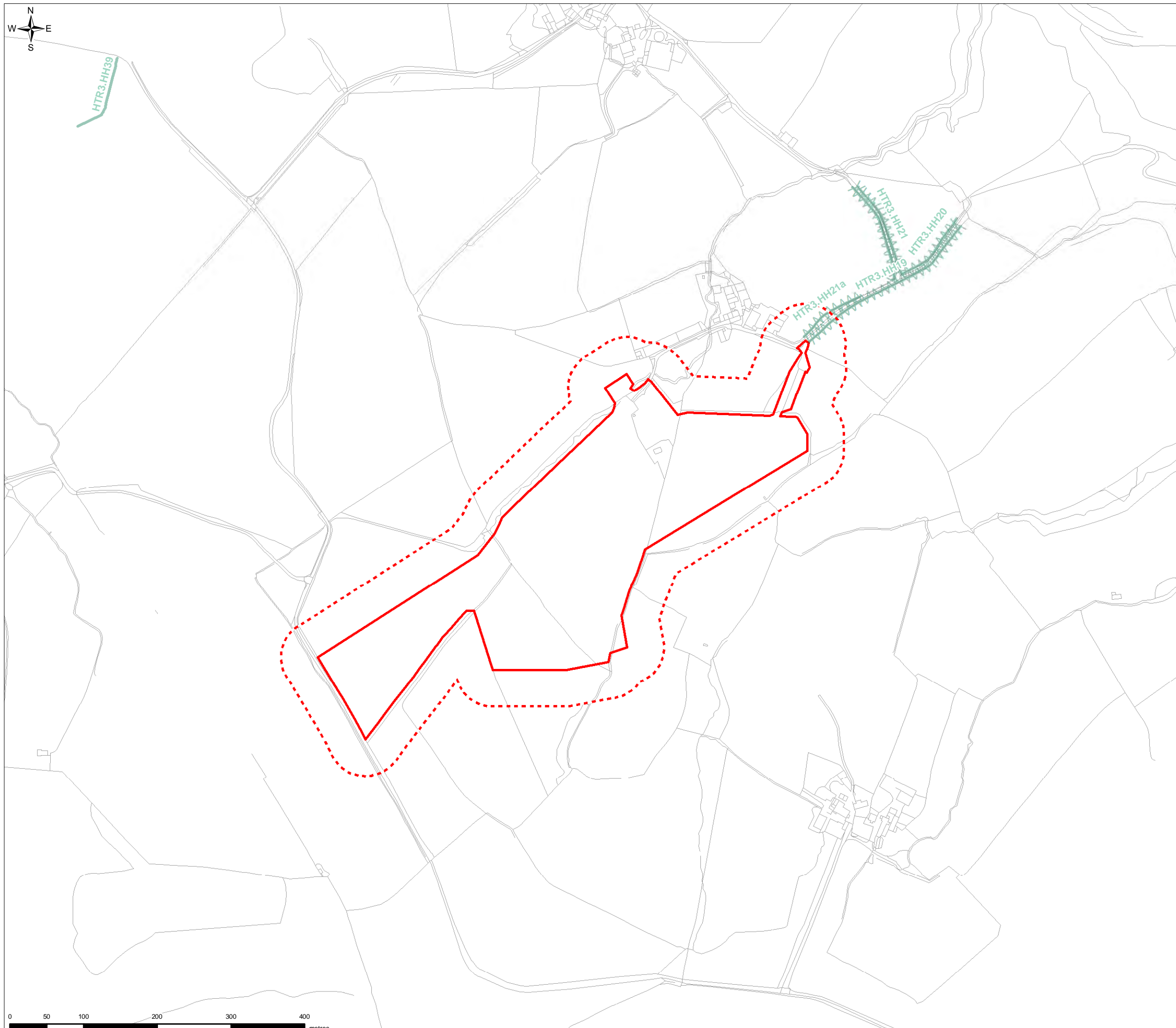
SCALE 1:1,500	SHEET SIZE A3
DRAWING NUMBER LCC_RVBC-BO-FIG-009-01-06	REVISION 0

The copyright of this document, which contains information of a proprietary nature, is vested in United Utilities Water Limited. The content of this document may not be used for purposes other than that for which it has been supplied and may not be reproduced, either wholly or in part, in any way whatsoever. It may not be used by, or its contents divulged to any other person whatsoever without the prior written permission of United Utilities Water Limited. Copyright Acknowledgement: Use of Ordnance Survey map data sanctioned by the controller of H.M. Stationery Office. OS Licence Number 100019326. Crown copyright reserved. Unauthorised production infringes copyright. Contains OS data © Crown copyright and database right 2021.

FIGURE 9A.6

Legend

- Compound location
- Compound location - 50m buffer



No hedgerow recorded within the compound.



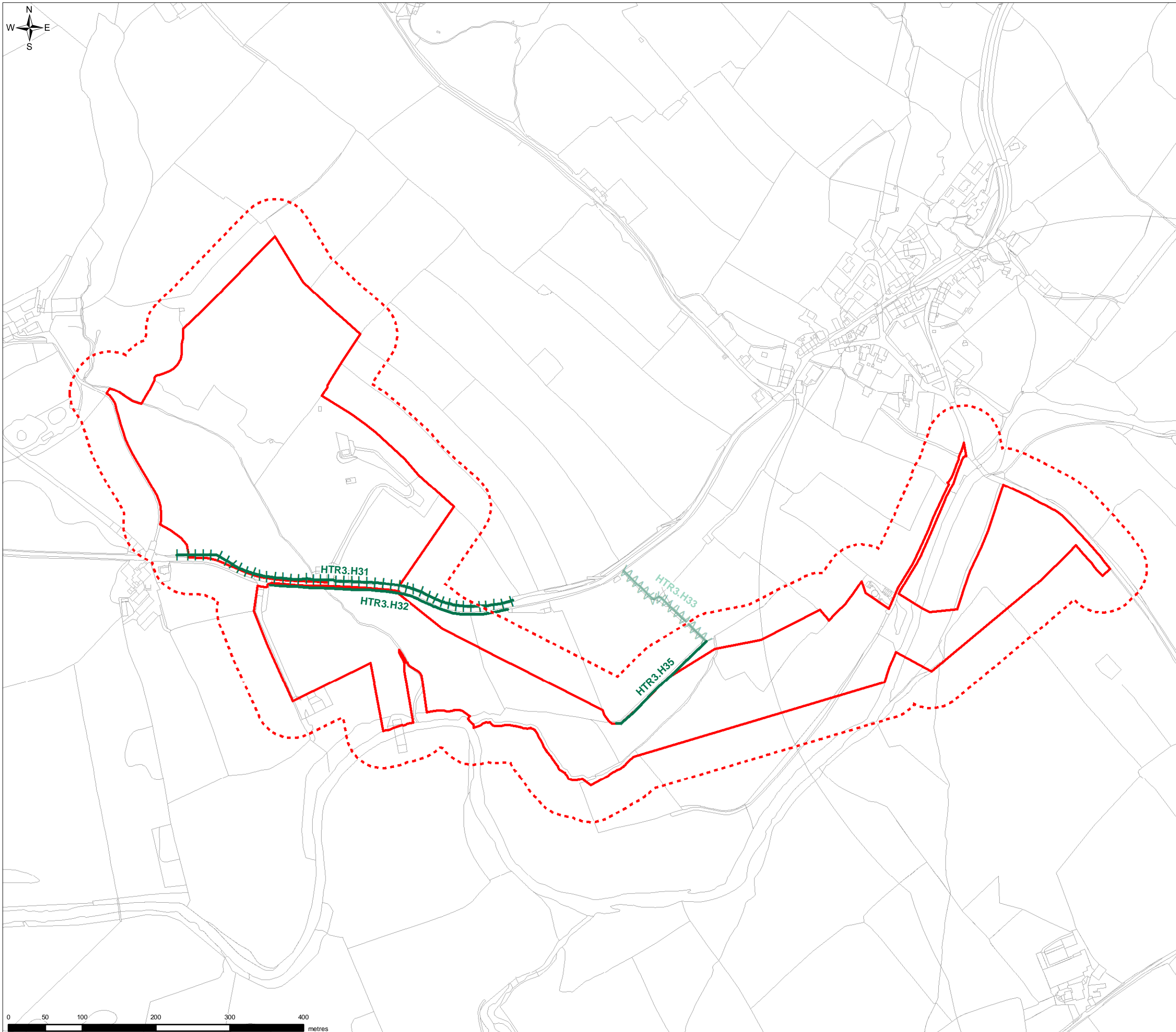
VERSION	AUTH	CHKD	REVD	REASON FOR ISSUE	DATE
0	MK	MW	LS	Initial Issue	30/03/2021



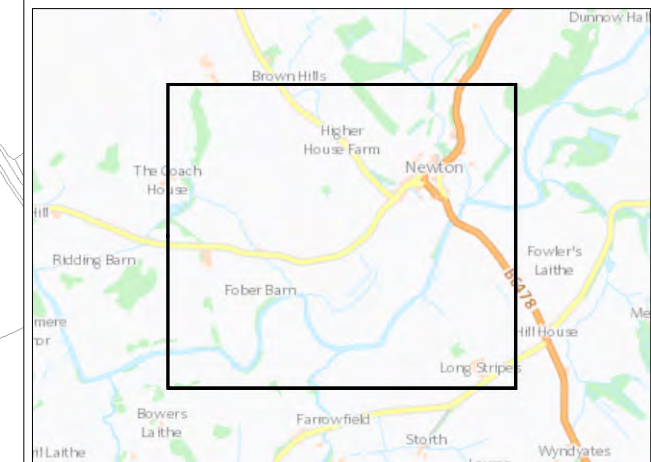
UNITED UTILITIES WATER LIMITED
 HAWESWATER AQUEDUCT RESILIENCE PROGRAMME
 HEDGEROW ASSESSMENT PLAN
 BOWLAND SECTION
 PAGE 3 of 4

SCALE 1:5,000	SHEET SIZE A3
DRAWING NUMBER LCC_RVBC-BO-FIG-009-01-06	REVISION 0

FIGURE 9A.6



- Legend**
- Compound location
 - Compound location - 50m buffer
- Existing Hedgerows**
- Species-poor intact hedge
 - Species-poor hedge and trees



VERSION	AUTH	CHKD	REVD	REASON FOR ISSUE	DATE
0	MK	MW	LS	Initial Issue	30/03/2021



UNITED UTILITIES WATER LIMITED
 HAWESWATER AQUEDUCT RESILIENCE PROGRAMME
 HEDGEROW ASSESSMENT PLAN
 BOWLAND SECTION
 PAGE 4 of 4

SCALE 1:5,000	SHEET SIZE A3
DRAWING NUMBER LCC_RVBC-BO-FIG-009-01-06	REVISION 0

The copyright of this document, which contains information of a proprietary nature, is vested in United Utilities Water Limited. The content of this document may not be used for purposes other than that for which it has been supplied and may not be reproduced, either wholly or in part, in any way whatsoever. It may not be used by, or its contents divulged to any other person whatsoever without the prior written permission of United Utilities Water Limited. Copyright Acknowledgement: Use of Ordnance Survey map data sanctioned by the controller of H.M. Stationery Office. OS Licence Number 100019326. Crown copyright reserved. Unauthorised production infringes copyright. Contains OS data © Crown copyright and database right 2021.