



Pages 2-5



Pages 6-13



FIGURE 9A.9

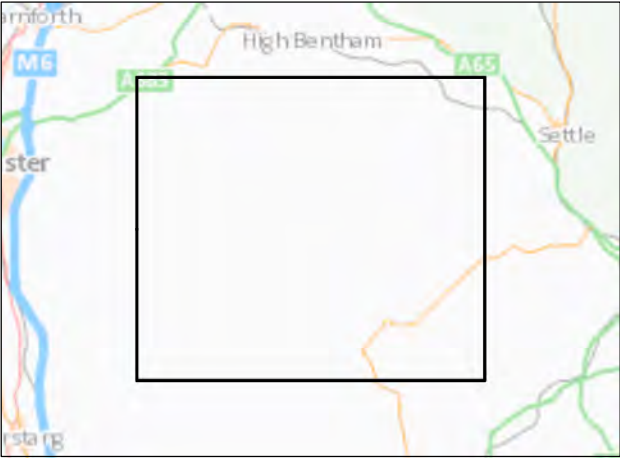
Legend



Compound location



Page and page number



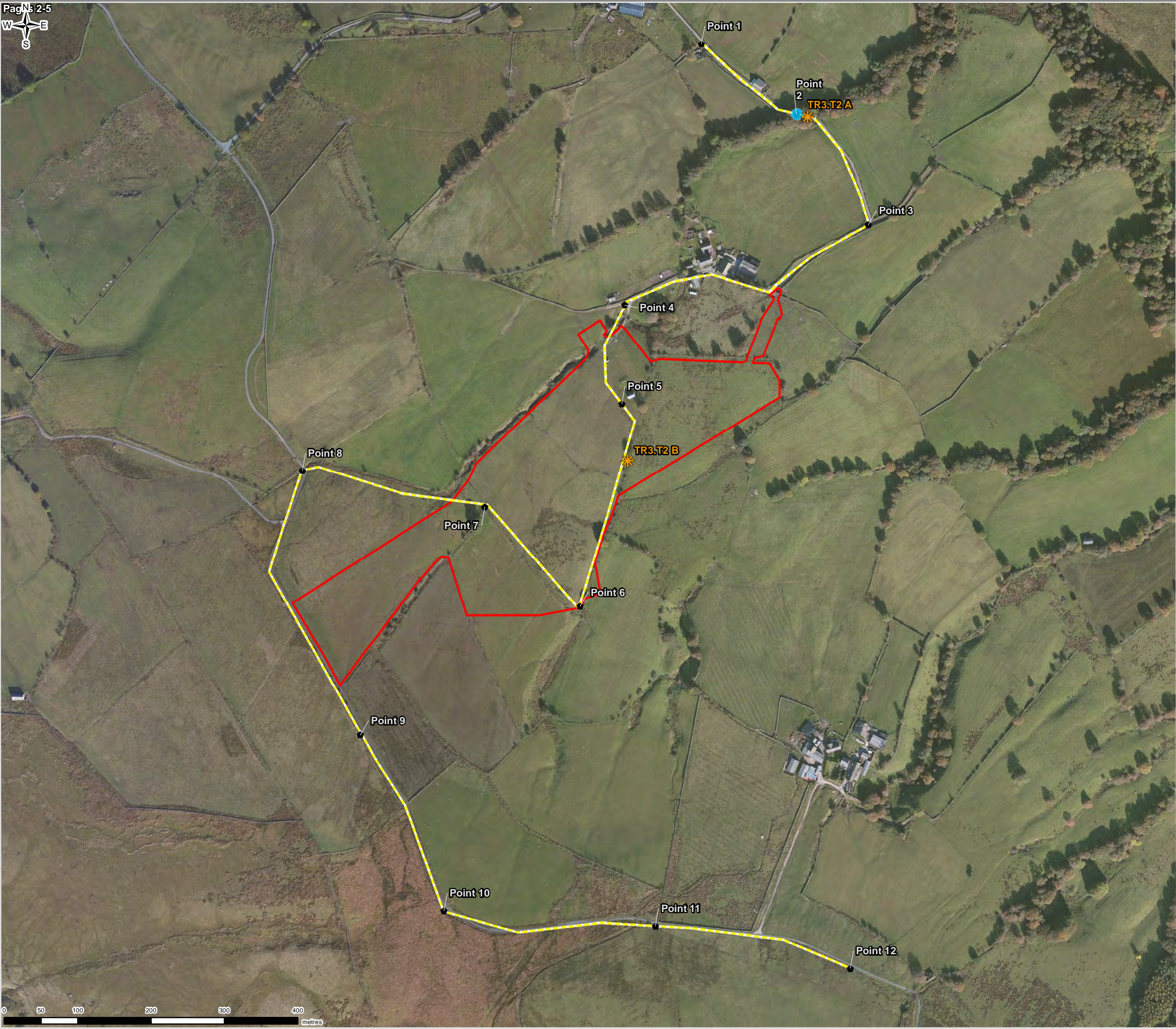
0	CW	LC	LS	Initial Issue	18/03/2021
VERSION	AUTH	CHKD	REVD	REASON FOR ISSUE	DATE



UNITED UTILITIES WATER LIMITED
HAWESWATER AQUEDUCT RESILIENCE PROGRAMME
BAT TRANSECT SURVEY RESULTS AND STATIC DETECTORS
SWARTHER SECTION
PAGE 1 of 16

SCALE 1:65,000	SHEET SIZE A3
DRAWING NUMBER LCC_RVBC-BO-FIG-009-01-09	REVISION 0

FIGURE 9A.9



Legend

- Compound location
- Page and page number
- Static detector location
- Bat listening point
- Transect route
- Species Recorded
 - Soprano pipistrelle
- Number of Passes
 - 1 pass

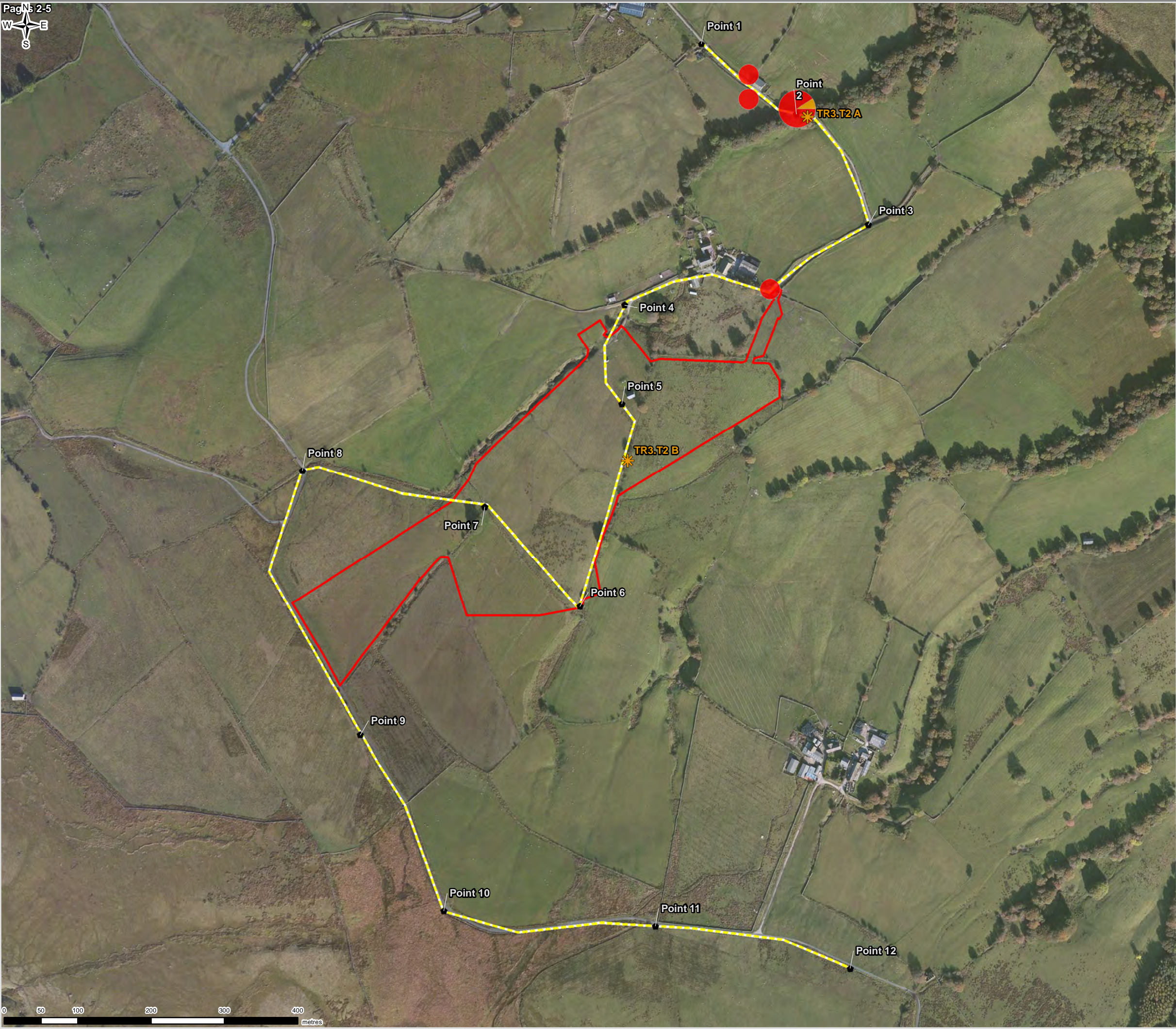


0	CW	LC	LS	Initial Issue	18/03/2021
VERSION	AUTH	CHKD	REVD	REASON FOR ISSUE	DATE



UNITED UTILITIES WATER LIMITED HAWESWATER AQUEDUCT RESILIENCE PROGRAMME BAT TRANSECT SURVEY RESULTS AND STATIC DETECTORS SWARTHER SECTION - VISIT 1 - 29 TH APRIL 2020 PAGE 2 of 16					SHEET SIZE A3
SCALE 1:5,000					REVISION 0
DRAWING NUMBER LCC_RVBC-BO-FIG-009-01-09					

FIGURE 9A.9



Legend

- Compound location
- Page and page number
- Static detector location
- Bat listening point
- Transect route
- Species Recorded**
 - Brown long-eared
 - Common pipistrelle
- Number of Passes**
 - 2 - 5 passes
 - 11 - 20 passes

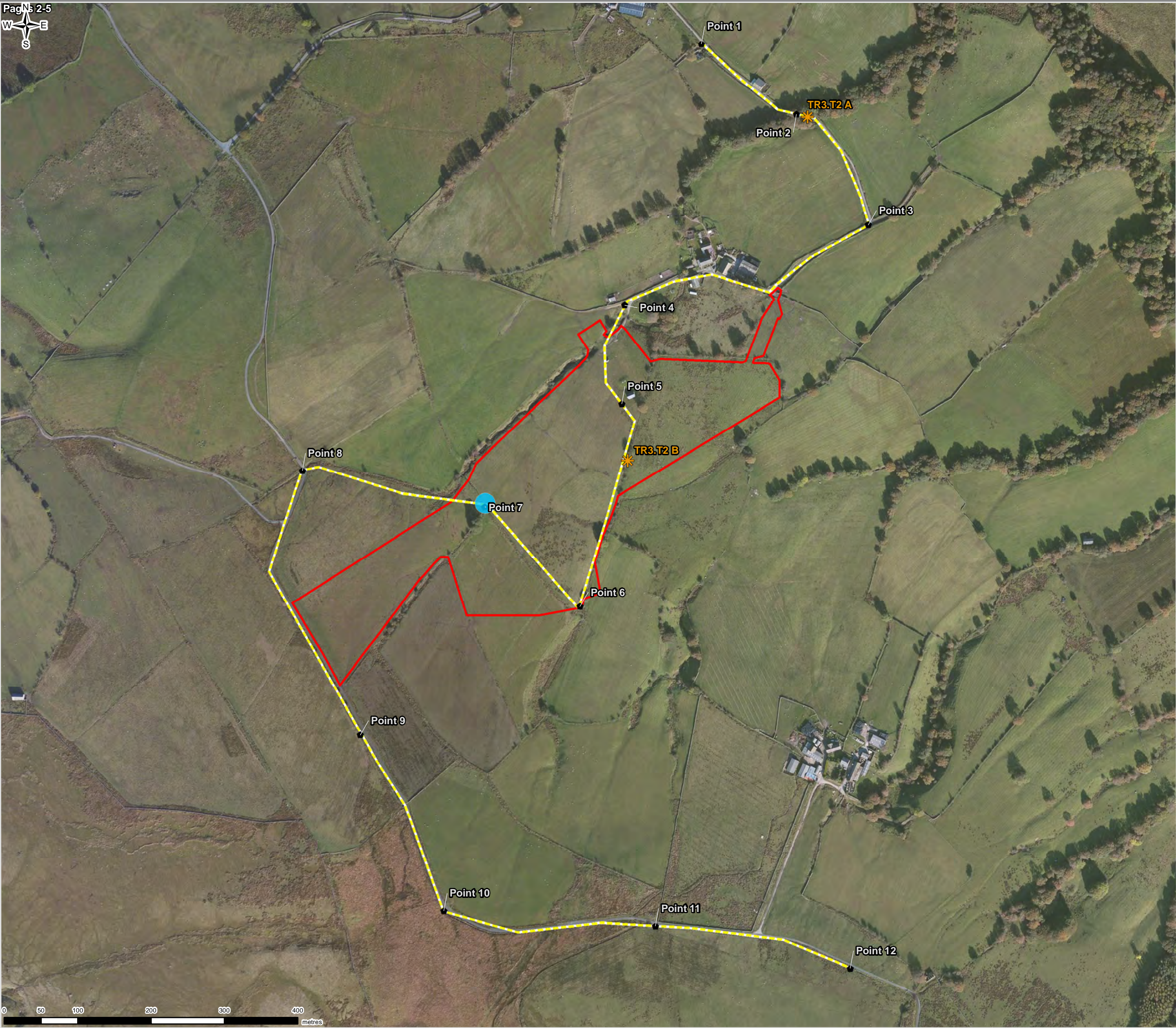


0	CW	LC	LS	Initial Issue	18/03/2021
VERSION	AUTH	CHKD	REVD	REASON FOR ISSUE	DATE



UNITED UTILITIES WATER LIMITED HAWESWATER AQUEDUCT RESILIENCE PROGRAMME BAT TRANSECT SURVEY RESULTS AND STATIC DETECTORS SWARTHER SECTION - VISIT 2 - 26 TH MAY 2020 PAGE 3 of 16					SHEET SIZE A3
SCALE 1:5,000					REVISION 0
DRAWING NUMBER LCC_RVBC-BO-FIG-009-01-09					

FIGURE 9A.9



Legend

- Compound location
- Page and page number
- Static detector location
- Bat listening point
- Transect route

Species Recorded

- Soprano pipistrelle

Number of Passes

- 2 - 5 passes



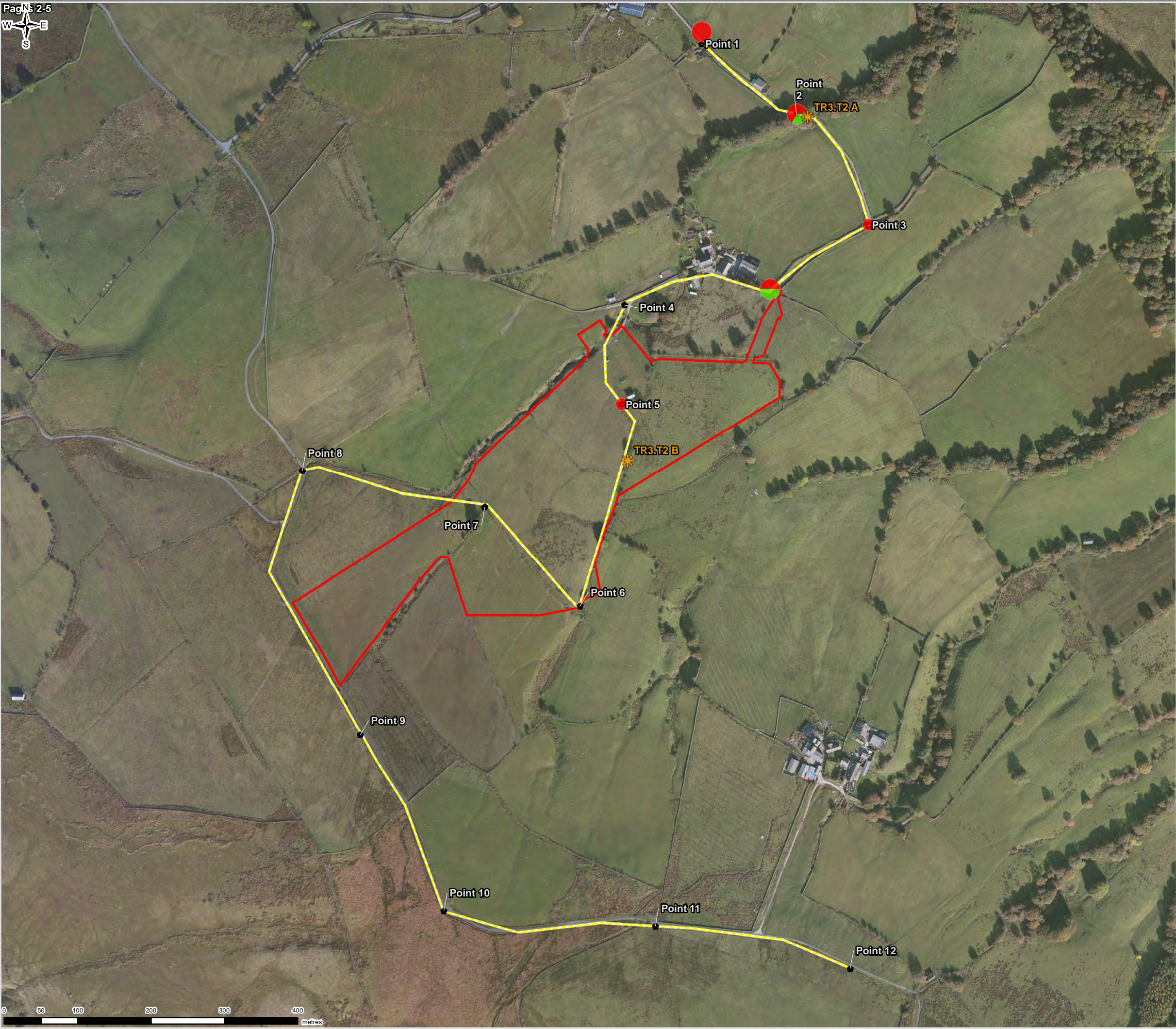
0	CW	LC	LS	Initial Issue	18/03/2021
VERSION	AUTH	CHKD	REVD	REASON FOR ISSUE	DATE



UNITED UTILITIES WATER LIMITED
HAWESWATER AQUEDUCT RESILIENCE PROGRAMME
BAT TRANSECT SURVEY RESULTS AND STATIC DETECTORS
SWARTHER SECTION - VISIT 3 - 18TH JUNE 2020
PAGE 4 of 16

SCALE 1:5,000	SHEET SIZE A3
DRAWING NUMBER LCC_RVBC-BO-FIG-009-01-09	REVISION 0

FIGURE 9A.9



Legend

- Compound location
- Page and page number
- Static detector location
- Bat listening point
- Transect route

Species Recorded

- Common pipistrelle
- Myotis

Number of Passes

- 1 pass
- 2 - 5 passes



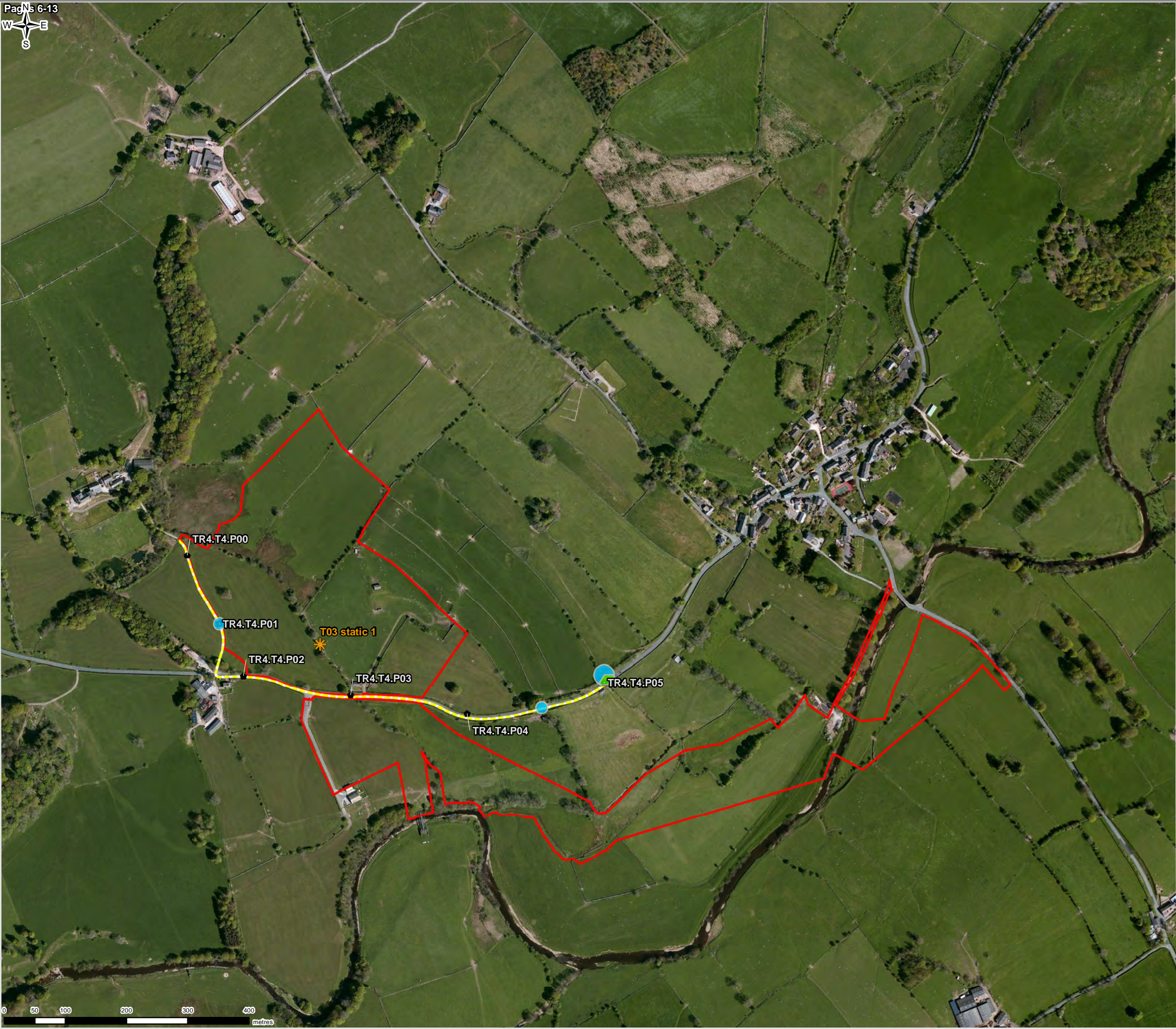
0	CW	LC	LS	Initial Issue	18/03/2021
VERSION	AUTH	CHKD	REVD	REASON FOR ISSUE	DATE



UNITED UTILITIES WATER LIMITED
HAWESWATER AQUEDUCT RESILIENCE PROGRAMME
BAT TRANSECT SURVEY RESULTS AND STATIC DETECTORS
SWARTHER SECTION - VISIT 4 - 30TH JULY 2020
PAGE 5 of 16

SCALE 1:5,000	SHEET SIZE A3
DRAWING NUMBER LCC_RVBC-BO-FIG-009-01-09	REVISION 0

FIGURE 9A.9



Legend

- Compound location
- Page and page number
- Static detector location
- Transect route

Species Recorded

- Myotis
- Soprano pipistrelle

Number of Passes

- 1 pass
- 2 - 5 passes



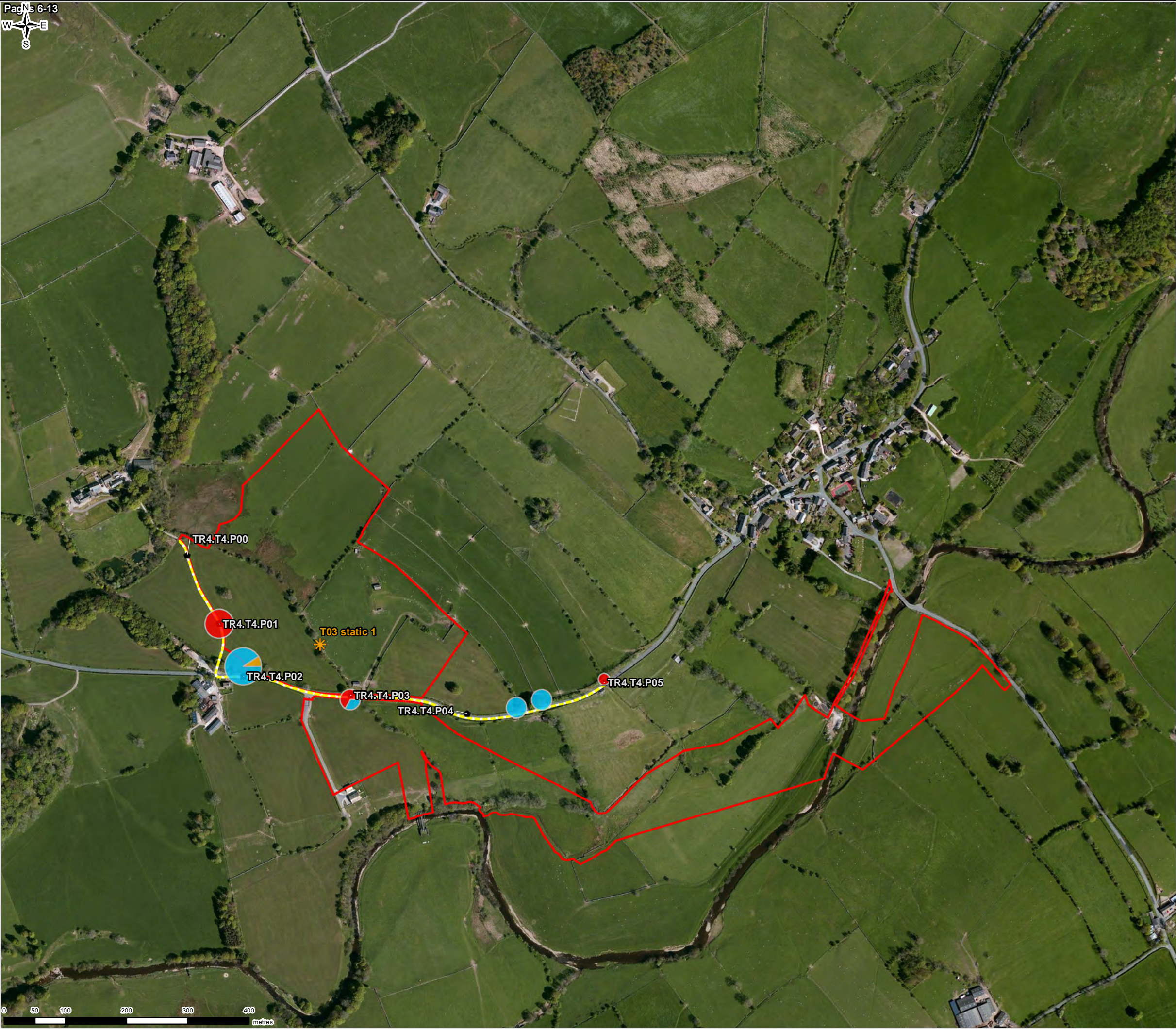
0	CW	LC	LS	Initial Issue	18/03/2021
VERSION	AUTH	CHKD	REVD	REASON FOR ISSUE	DATE



UNITED UTILITIES WATER LIMITED
HAWESWATER AQUEDUCT RESILIENCE PROGRAMME
BAT TRANSECT SURVEY RESULTS AND STATIC DETECTORS
SWARTHER SECTION - VISIT 1 - 29TH AUGUST 2019
PAGE 6 of 16

SCALE 1:6,000	SHEET SIZE A3
DRAWING NUMBER LCC_RVBC-BO-FIG-009-01-09	REVISION 0

FIGURE 9A.9



Legend

- Compound location
- Page and page number
- Static detector location
- Transect route

Species Recorded

- Brown long-eared
- Common pipistrelle
- Soprano pipistrelle

Number of Passes

- 1 pass
- 2 - 5 passes
- 6 - 10 passes
- 11 - 20 passes



0	CW	LC	LS	Initial Issue	18/03/2021
VERSION	AUTH	CHKD	REVD	REASON FOR ISSUE	DATE



UNITED UTILITIES WATER LIMITED HAWESWATER AQUEDUCT RESILIENCE PROGRAMME BAT TRANSECT SURVEY RESULTS AND STATIC DETECTORS SWARTHER SECTION - VISIT 2 - 07 ND OCTOBER 2019 PAGE 7 of 16	
SCALE 1:6,000	SHEET SIZE A3
DRAWING NUMBER LCC_RVBC-BO-FIG-009-01-09	REVISION 0

FIGURE 9A.9

Legend

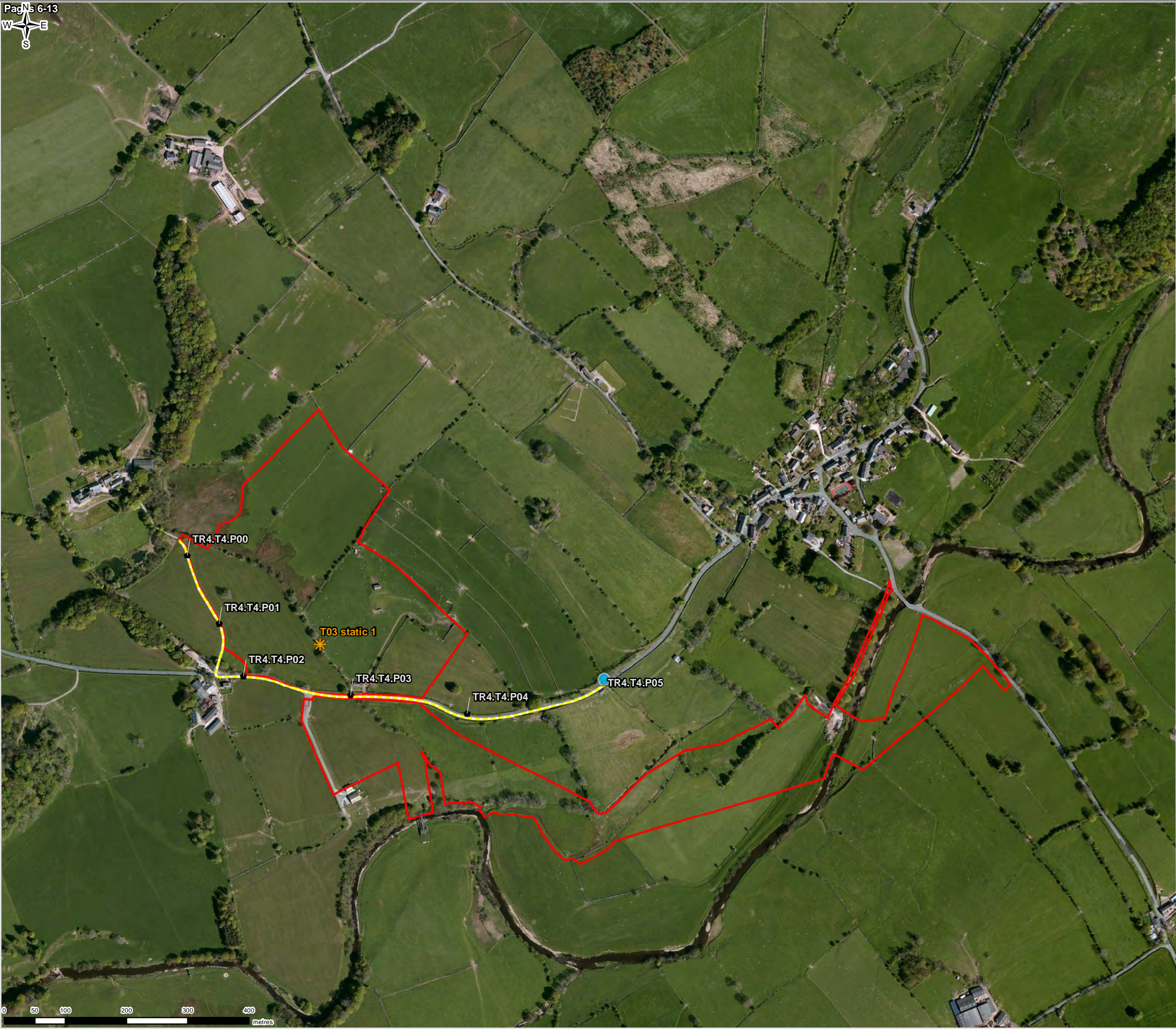
- Compound location
- Page and page number
- Static detector location
- Transect route

Species Recorded

- Soprano pipistrelle

Number of Passes

- 1 pass



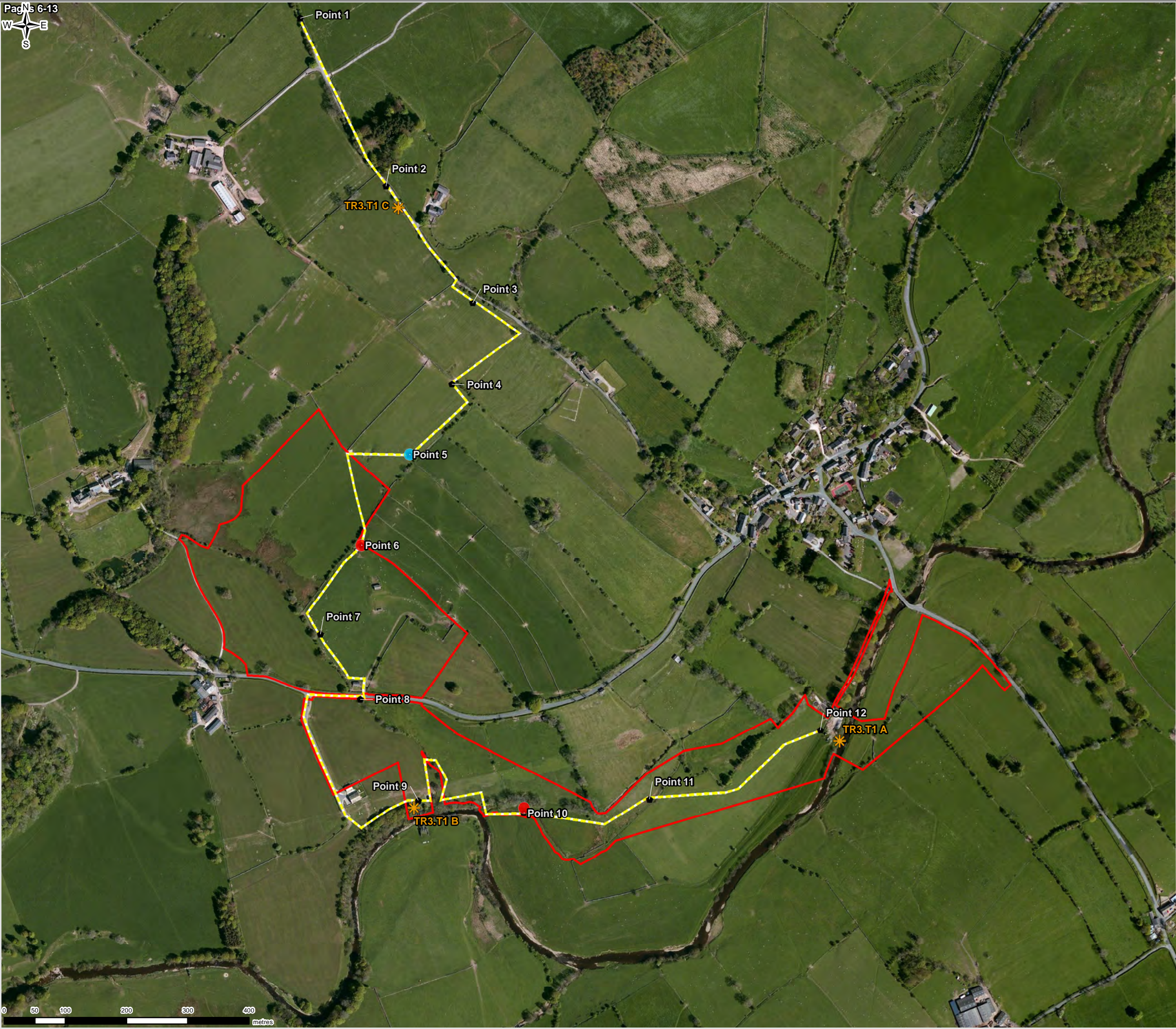
0	CW	LC	LS	Initial Issue	18/03/2021
VERSION	AUTH	CHKD	REVD	REASON FOR ISSUE	DATE



UNITED UTILITIES WATER LIMITED
HAWESWATER AQUEDUCT RESILIENCE PROGRAMME
BAT TRANSECT SURVEY RESULTS AND STATIC DETECTORS
SWARTHER SECTION - VISIT 3 - 23TH OCTOBER 2019
PAGE 8 of 16

SCALE 1:6,000	SHEET SIZE A3
DRAWING NUMBER LCC_RVBC-BO-FIG-009-01-09	REVISION 0

FIGURE 9A.9



Legend

- Compound location
- Page and page number
- Static detector location
- Bat listening point
- Transect route

Species Recorded

- Common pipistrelle
- Soprano pipistrelle

Number of Passes

- 1 pass



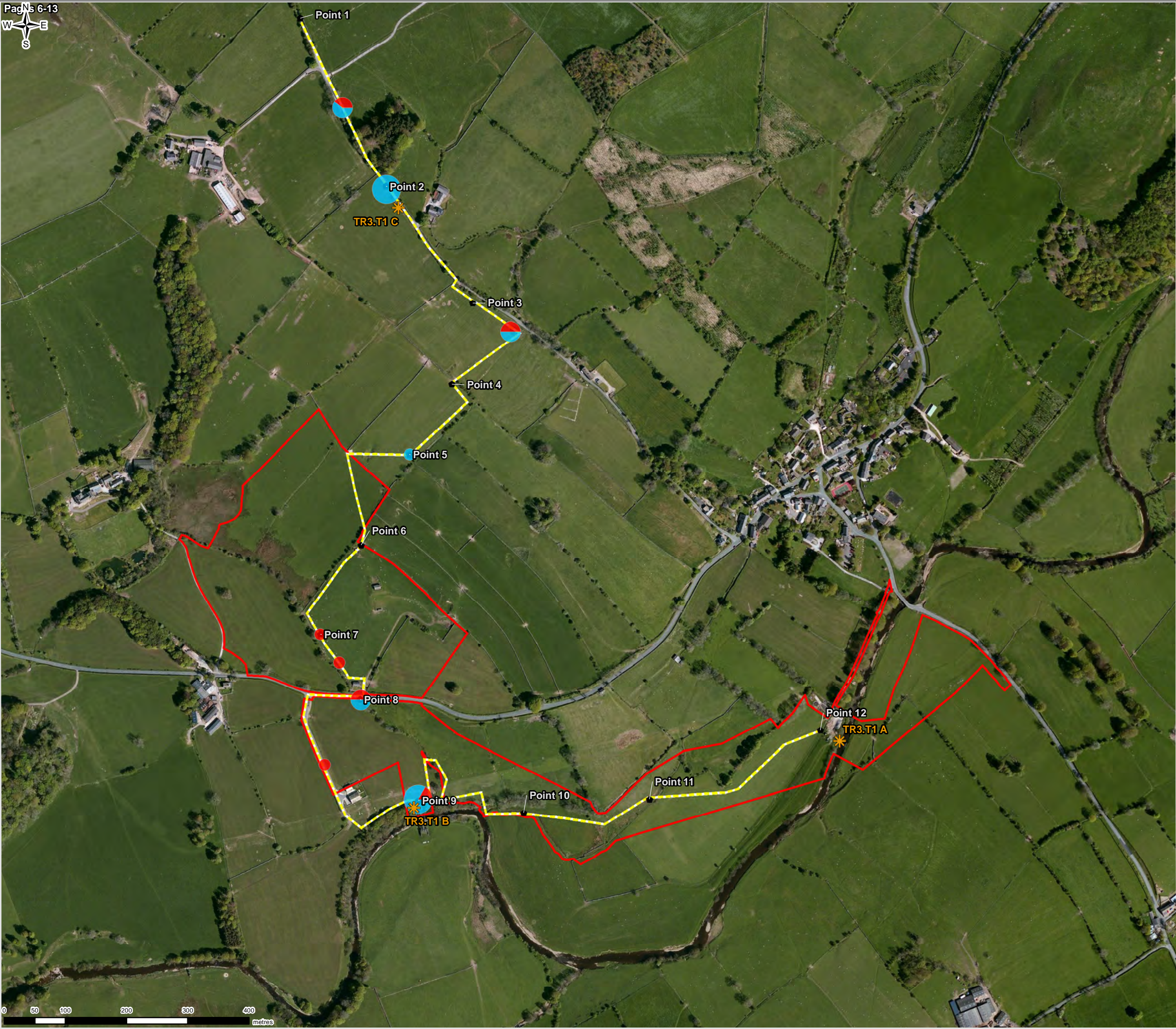
0	CW	LC	LS	Initial Issue	18/03/2021
VERSION	AUTH	CHKD	REVD	REASON FOR ISSUE	DATE



UNITED UTILITIES WATER LIMITED
HAWESWATER AQUEDUCT RESILIENCE PROGRAMME
BAT TRANSECT SURVEY RESULTS AND STATIC DETECTORS
SWARTHER SECTION - VISIT 1 - 04TH APRIL 2020
PAGE 9 of 16

SCALE 1:6,000	SHEET SIZE A3
DRAWING NUMBER LCC_RVBC-BO-FIG-009-01-09	REVISION 0

FIGURE 9A.9



Legend

- Compound location
- Page and page number
- Static detector location
- Bat listening point
- Transect route

Species Recorded

- Common pipistrelle
- Soprano pipistrelle

Number of Passes

- 1 pass
- 2 - 5 passes
- 6 - 10 passes
- 41 - 120 passes



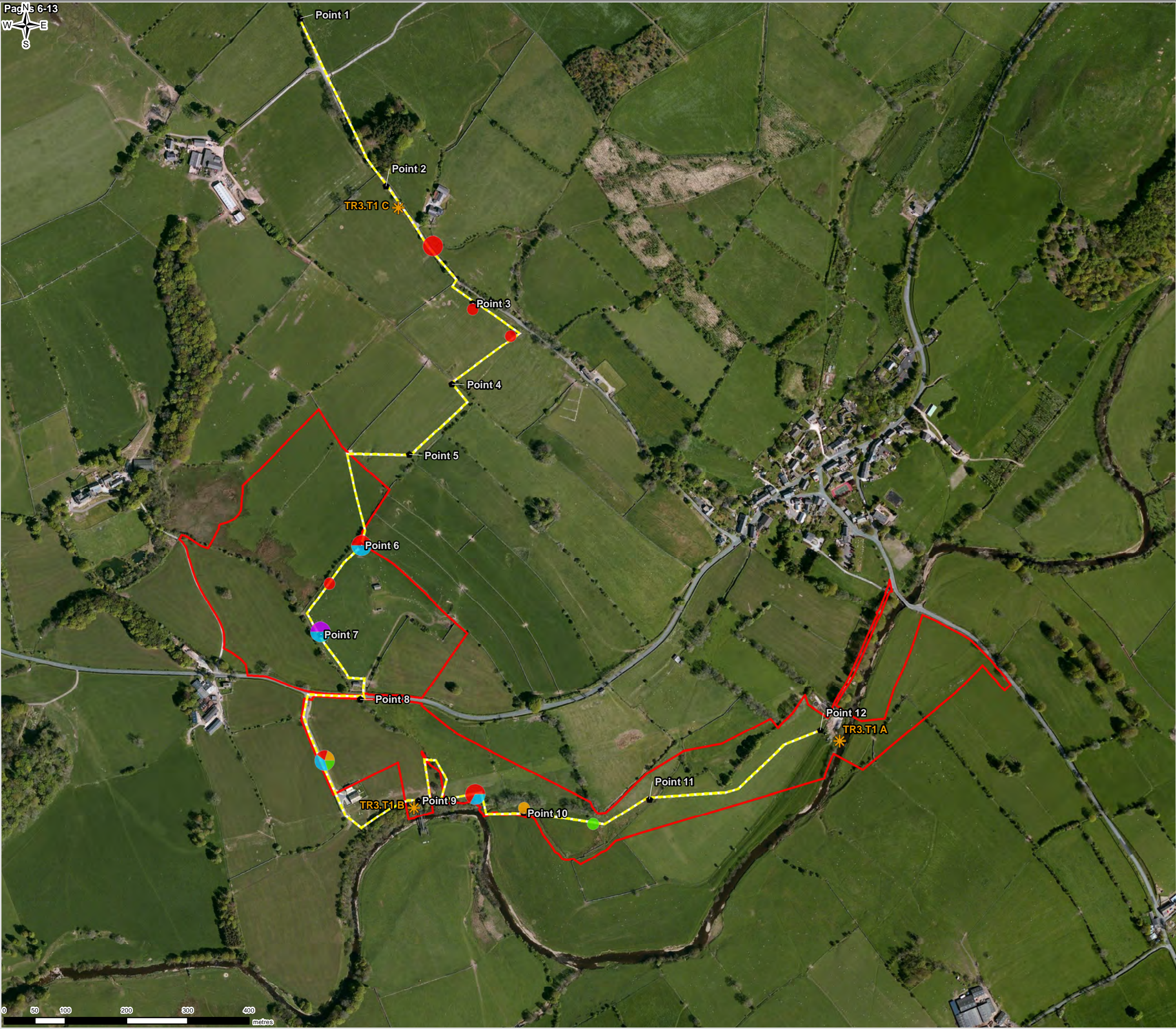
0	CW	LC	LS	Initial Issue	18/03/2021
VERSION	AUTH	CHKD	REVD	REASON FOR ISSUE	DATE



UNITED UTILITIES WATER LIMITED
HAWESWATER AQUEDUCT RESILIENCE PROGRAMME
BAT TRANSECT SURVEY RESULTS AND STATIC DETECTORS
SWARTHER SECTION - VISIT 2 - 22ND APRIL 2020
PAGE 10 OF 16

SCALE 1:6,000	SHEET SIZE A3
DRAWING NUMBER LCC_RVBC-BO-FIG-009-01-09	REVISION 0

FIGURE 9A.9



Legend

- Compound location
- Page and page number
- Static detector location
- Bat listening point
- Transect route

Species Recorded

- Brown long-eared
- Common pipistrelle
- Myotis
- Noctule
- Soprano pipistrelle

Number of Passes

- 1 pass
- 2 - 5 passes
- 41 - 120 passes



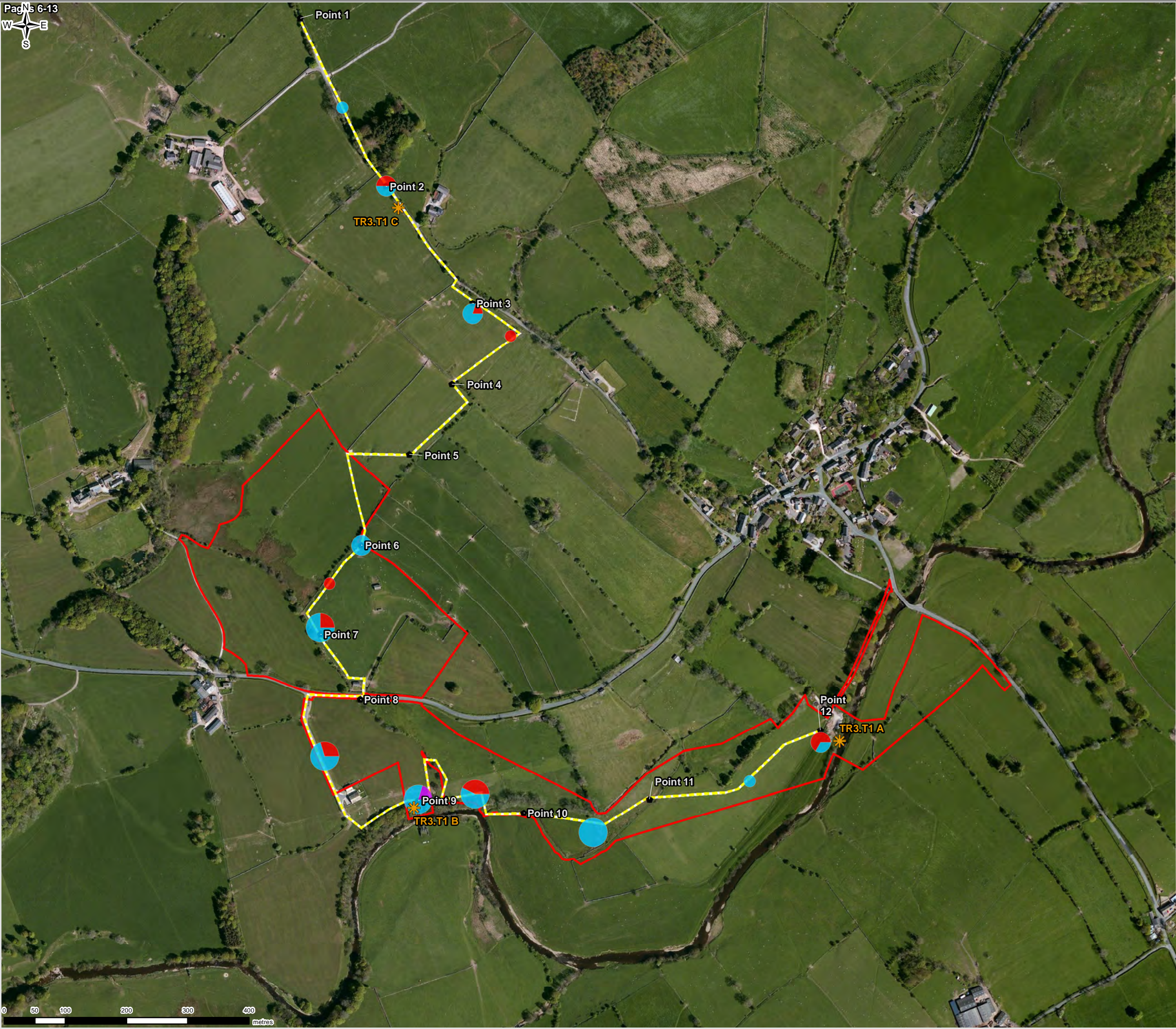
0	CW	LC	LS	Initial Issue	18/03/2021
VERSION	AUTH	CHKD	REVD	REASON FOR ISSUE	DATE



UNITED UTILITIES WATER LIMITED
HAWESWATER AQUEDUCT RESILIENCE PROGRAMME
BAT TRANSECT SURVEY RESULTS AND STATIC DETECTORS
SWARTHER SECTION - VISIT 3 - 07TH MAY 2020
PAGE 11 of 16

SCALE 1:6,000	SHEET SIZE A3
DRAWING NUMBER LCC_RVBC-BO-FIG-009-01-09	REVISION 0

FIGURE 9A.9



Legend

- Compound location
- Page and page number
- Static detector location
- Bat listening point
- Transect route

Species Recorded

- Common pipistrelle
- Noctule
- Soprano pipistrelle

Number of Passes

- 1 pass
- 2 - 5 passes
- 6 - 10 passes
- 21 - 40 passes
- 41 - 120 passes



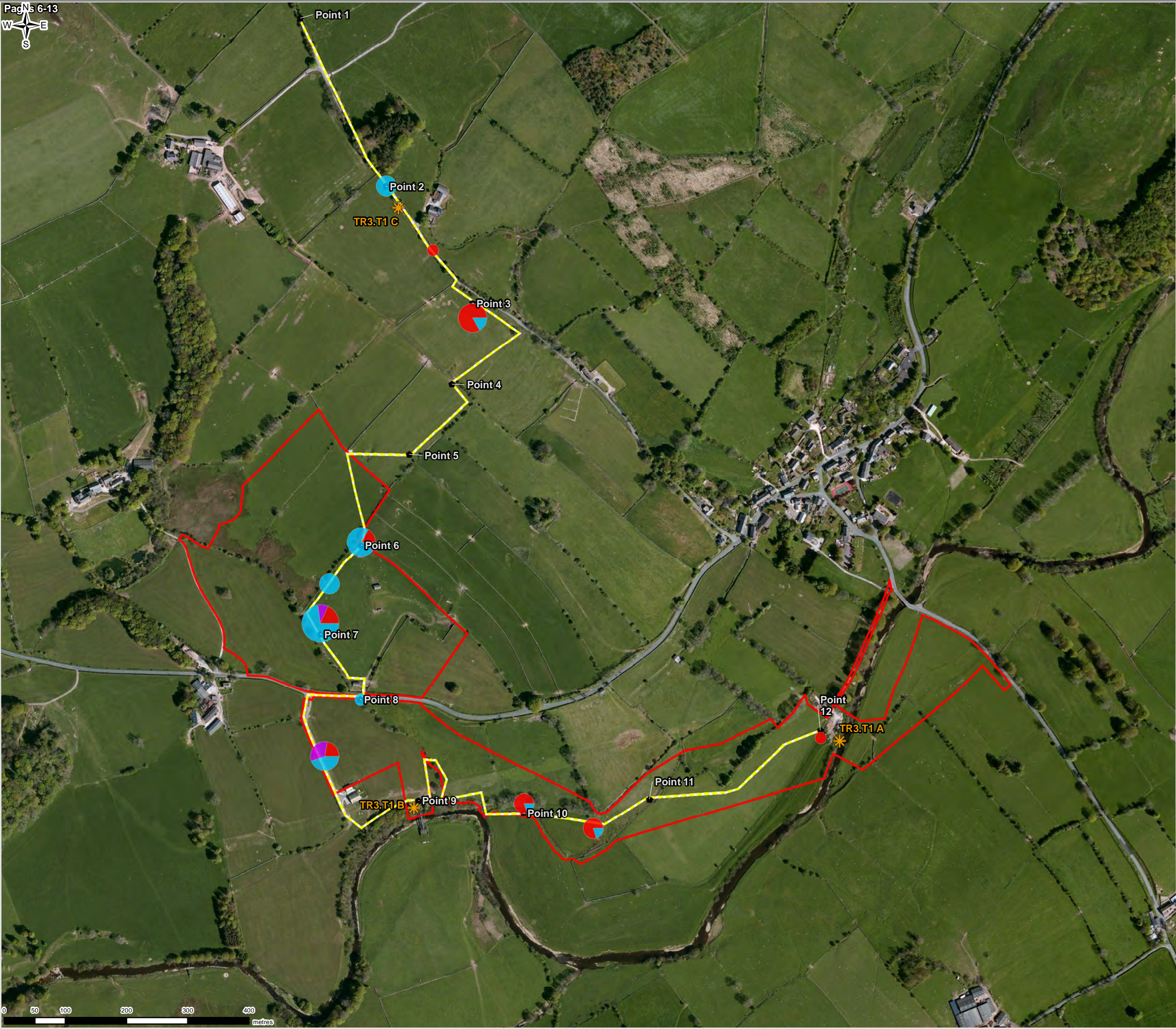
0	CW	LC	LS	Initial Issue	18/03/2021
VERSION	AUTH	CHKD	REVD	REASON FOR ISSUE	DATE



UNITED UTILITIES WATER LIMITED
HAWESWATER AQUEDUCT RESILIENCE PROGRAMME
BAT TRANSECT SURVEY RESULTS AND STATIC DETECTORS
SWARTHER SECTION - VISIT 4 - 20TH MAY 2020
PAGE 12 of 16

SCALE 1:6,000	SHEET SIZE A3
DRAWING NUMBER LCC_RVBC-BO-FIG-009-01-09	REVISION 0

FIGURE 9A.9



Legend

- Compound location
- Page and page number
- Static detector location
- Bat listening point
- Transect route

Species Recorded

- Common pipistrelle
- Myotis
- Noctule
- Soprano pipistrelle

Number of Passes

- 1 pass
- 2 - 5 passes
- 6 - 10 passes
- 11 - 20 passes
- 21 - 40 passes
- 41 - 120 passes



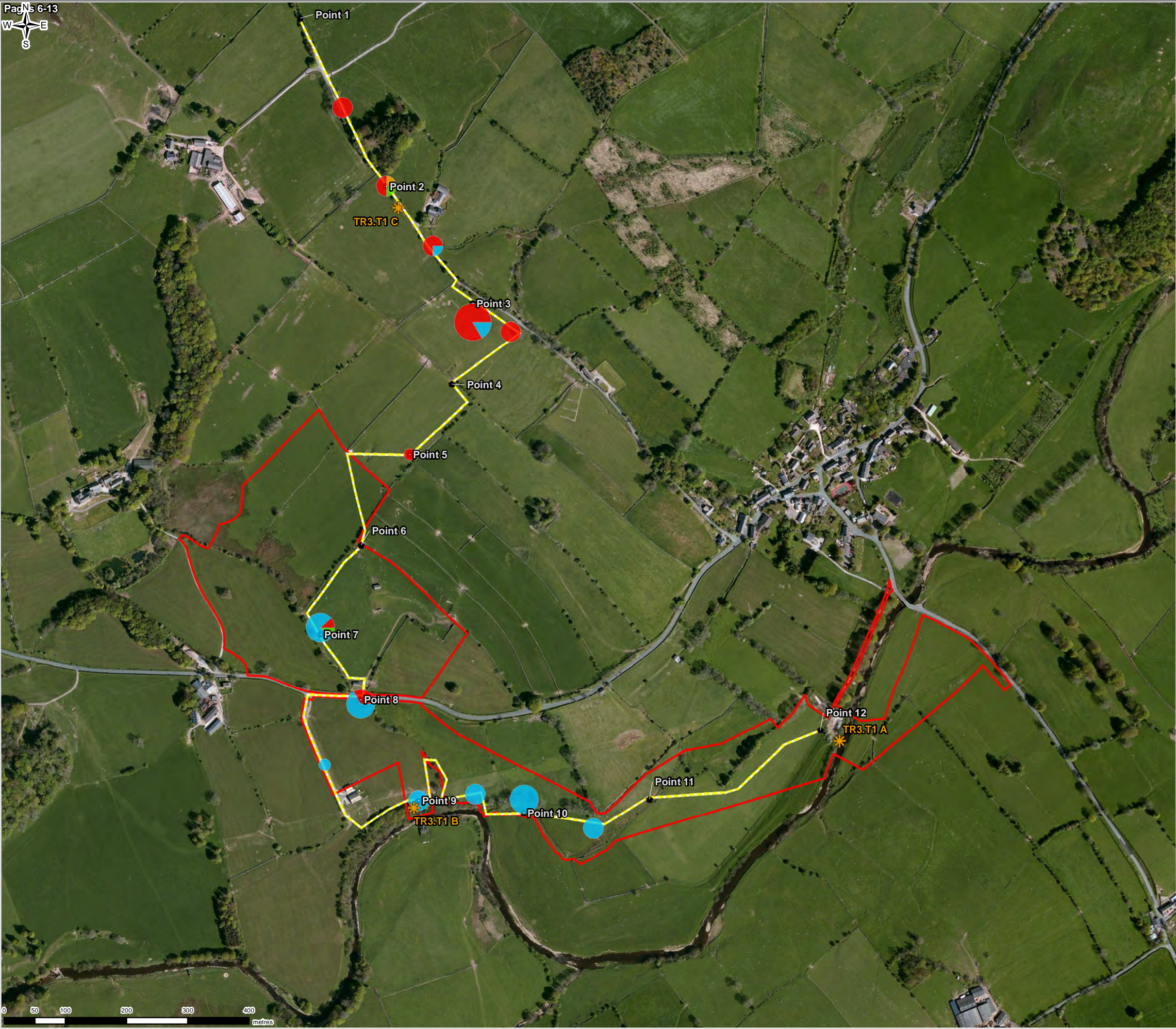
0	CW	LC	LS	Initial Issue	18/03/2021
VERSION	AUTH	CHKD	REVD	REASON FOR ISSUE	DATE



UNITED UTILITIES WATER LIMITED
HAWESWATER AQUEDUCT RESILIENCE PROGRAMME
BAT TRANSECT SURVEY RESULTS AND STATIC DETECTORS
SWARTHER SECTION - VISIT 5 - 04TH JUNE 2020
PAGE 13 of 16

SCALE 1:6,000	SHEET SIZE A3
DRAWING NUMBER LCC_RVBC-BO-FIG-009-01-09	REVISION 0

FIGURE 9A.9



Legend

- Compound location
- Page and page number
- Static detector location
- Bat listening point
- Transect route

Species Recorded

- Brown long-eared
- Common pipistrelle
- Myotis
- Soprano pipistrelle

Number of Passes

- 1 pass
- 2 - 5 passes
- 6 - 10 passes
- 11 - 20 passes



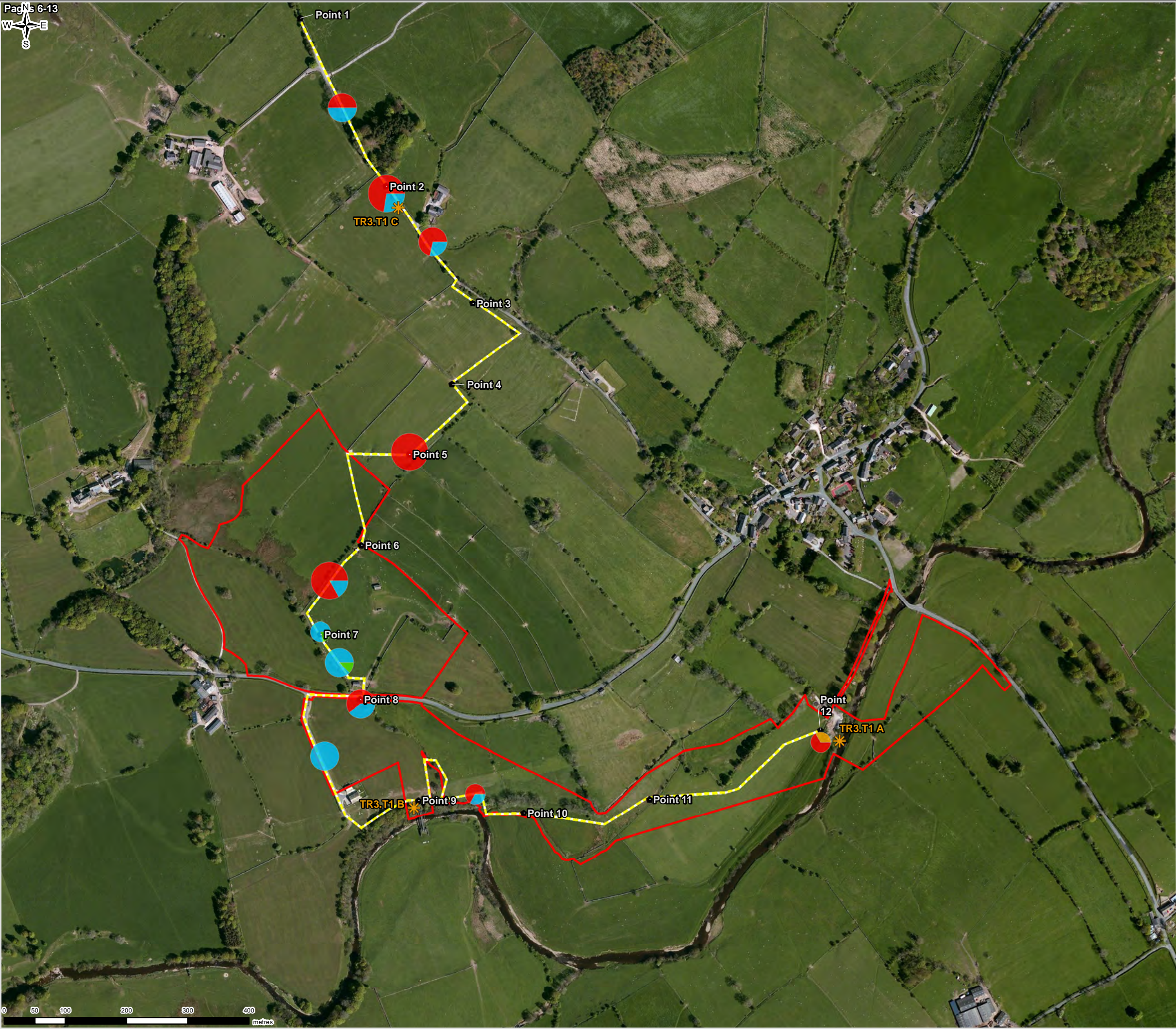
0	CW	LC	LS	Initial Issue	18/03/2021
VERSION	AUTH	CHKD	REVD	REASON FOR ISSUE	DATE



UNITED UTILITIES WATER LIMITED
HAWESWATER AQUEDUCT RESILIENCE PROGRAMME
BAT TRANSECT SURVEY RESULTS AND STATIC DETECTORS
SWARTHER SECTION - VISIT 6 - 24TH JUNE 2020
PAGE 14 of 16

SCALE 1:6,000	SHEET SIZE A3
DRAWING NUMBER LCC_RVBC-BO-FIG-009-01-09	REVISION 0

FIGURE 9A.9



Legend

- Compound location
- Page and page number
- Static detector location
- Bat listening point
- Transect route

Species Recorded

- Brown long-eared
- Common pipistrelle
- Myotis
- Soprano pipistrelle

Number of Passes

- 2 - 5 passes
- 6 - 10 passes
- 11 - 20 passes
- 21 - 40 passes
- 41 - 120 passes



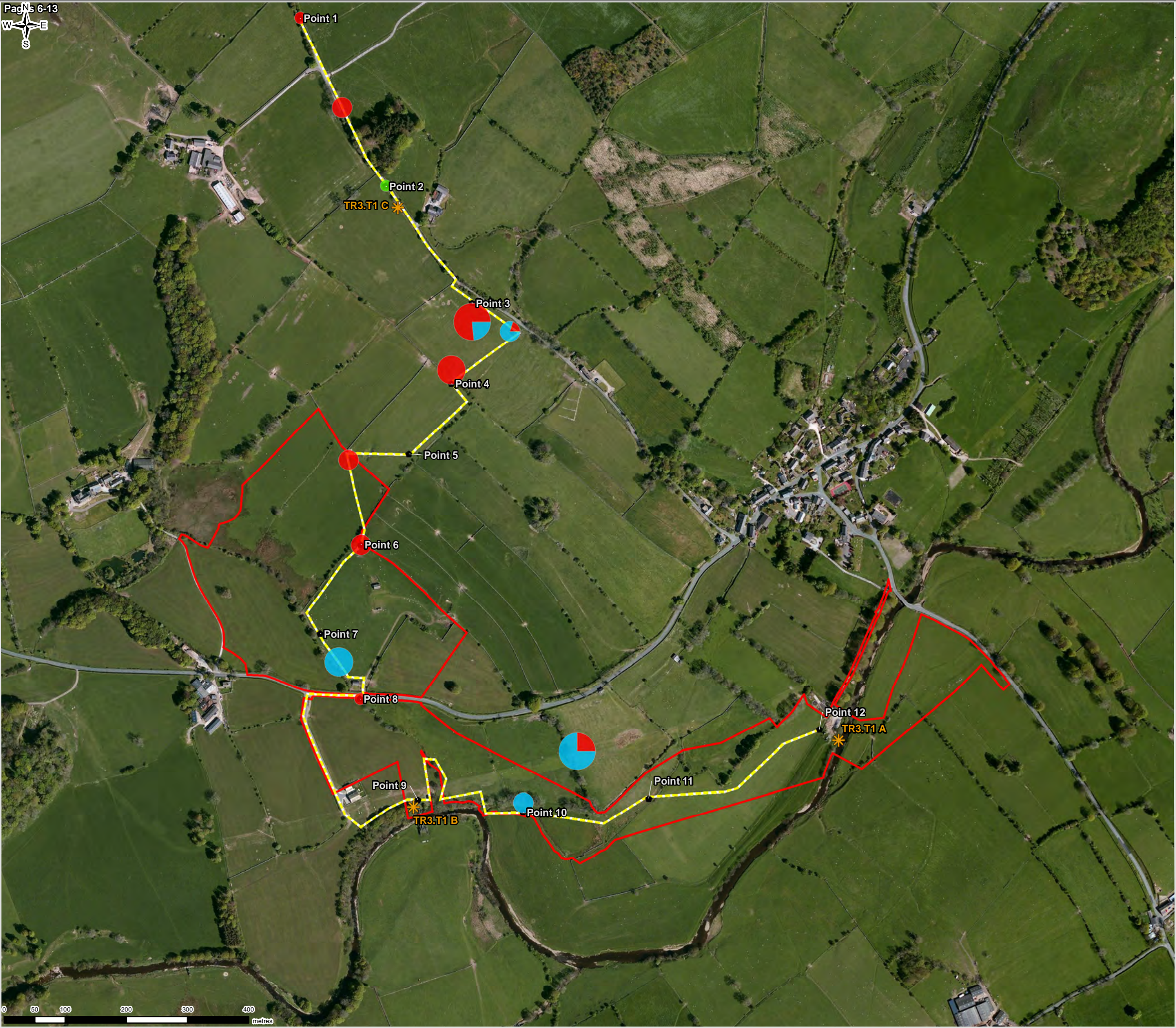
0	CW	LC	LS	Initial Issue	18/03/2021
VERSION	AUTH	CHKD	REVD	REASON FOR ISSUE	DATE



UNITED UTILITIES WATER LIMITED
HAWESWATER AQUEDUCT RESILIENCE PROGRAMME
BAT TRANSECT SURVEY RESULTS AND STATIC DETECTORS
SWARTHER SECTION - VISIT 7 - 06TH JULY 2020
PAGE 15 of 16

SCALE 1:6,000	SHEET SIZE A3
DRAWING NUMBER LCC_RVBC-BO-FIG-009-01-09	REVISION 0

FIGURE 9A.9



Legend

- Compound location
- Page and page number
- Static detector location
- Bat listening point
- Transect route

Species Recorded

- Common pipistrelle
- Myotis
- Soprano pipistrelle

Number of Passes

- 1 pass
- 2 - 5 passes
- 6 - 10 passes
- 11 - 20 passes
- 21 - 40 passes



0	CW	LC	LS	Initial Issue	18/03/2021
VERSION	AUTH	CHKD	REVD	REASON FOR ISSUE	DATE



UNITED UTILITIES WATER LIMITED
HAWESWATER AQUEDUCT RESILIENCE PROGRAMME
BAT TRANSECT SURVEY RESULTS AND STATIC DETECTORS
SWARTHER SECTION - VISIT 8 - 28TH JULY 2020
PAGE 16 of 16

SCALE 1:6,000	SHEET SIZE A3
DRAWING NUMBER LCC_RVBC-BO-FIG-009-01-09	REVISION 0