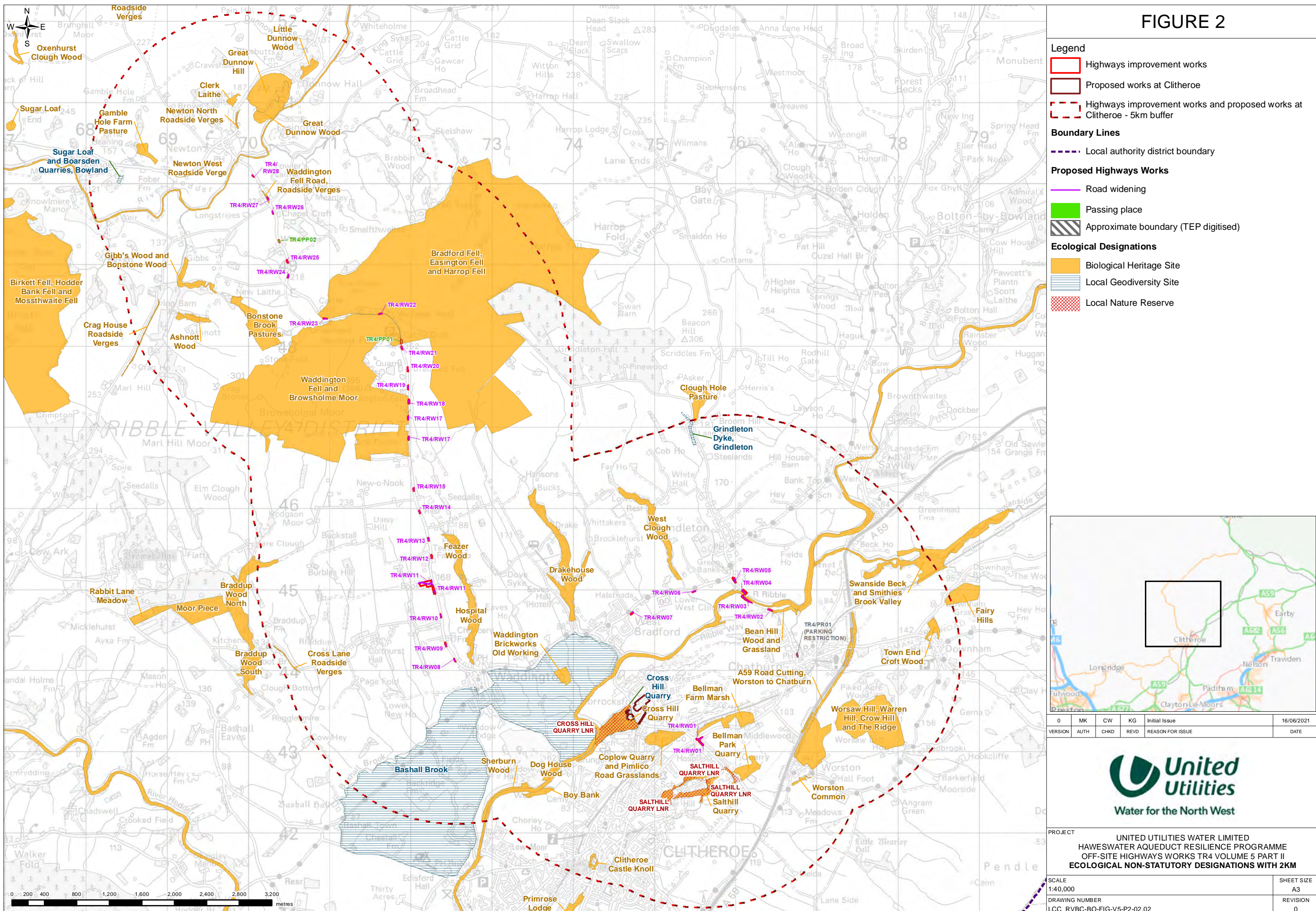


FIGURE 2



Legend

- Highways improvement works
- Proposed works at Clitheroe
- Highways improvement works and proposed works at Clitheroe - 5km buffer

Boundary Lines

- Local authority district boundary

Proposed Highways Works

- Road widening
- Passing place
- Approximate boundary (TEP digitised)

Ecological Designations

- Biological Heritage Site
- Local Geodiversity Site
- Local Nature Reserve



0	MK	CW	KG	Initial Issue	16/06/2021
---	----	----	----	---------------	------------

PROJECT		UNITED UTILITIES WATER LIMITED HAWESWATER AQUEDUCT RESILIENCE PROGRAMME OFF-SITE HIGHWAYS WORKS TR4 VOLUME 5 PART II ECOLOGICAL NON-STATUTORY DESIGNATIONS WITH 2KM
SCALE	1:40,000	SHEET SIZE A3
DRAWING NUMBER	LCC_RVBC-BO-FIG-V5-P2-02.02	REVISION 0

The copyright of this document, which contains information of a proprietary nature, is vested in United Utilities Water Limited. The content of this document may not be used for purposes other than that for which it has been supplied and may not be reproduced, either wholly or in part, in any way whatsoever. It may not be used by, or its contents divulged to any other person whatsoever without the prior written permission of United Utilities Water Limited. Copyright Acknowledgement: Use of Ordnance Survey map data sanctioned by the controller of H.M. Stationery Office. OS Licence Number 100019326. Crown copyright reserved. Unauthorised production infringes copyright. Contains data provided by Lancashire Environment Record Network © Lancashire Environment Record Network 2020. Data reproduced with the permission of RSPB. © Crown Copyright. Ordnance Survey licence number 100021787 (2021).