

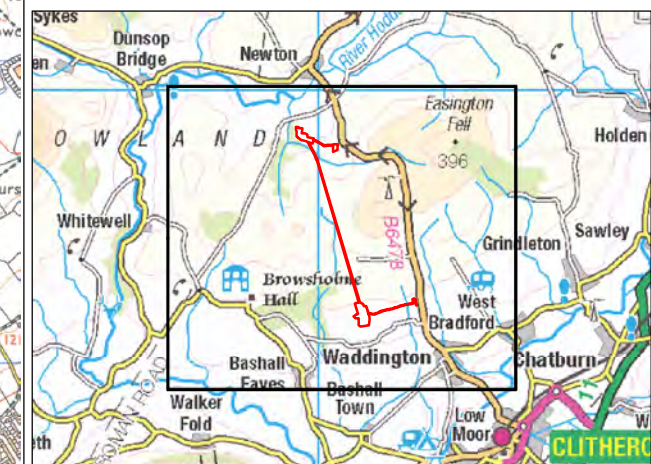
FIGURE 11.4

Notes

Part of the Braddup Compound is within a Mineral Safeguarding Area (MSA) for sandstone. The proposed tunnel route passes through MSAs for sandstone, sand and gravel, and limestone.

Legend

- Planning Application Boundary
- 250m Assessment Area
- Quarry Locations
- ▲ Local Geological Sites

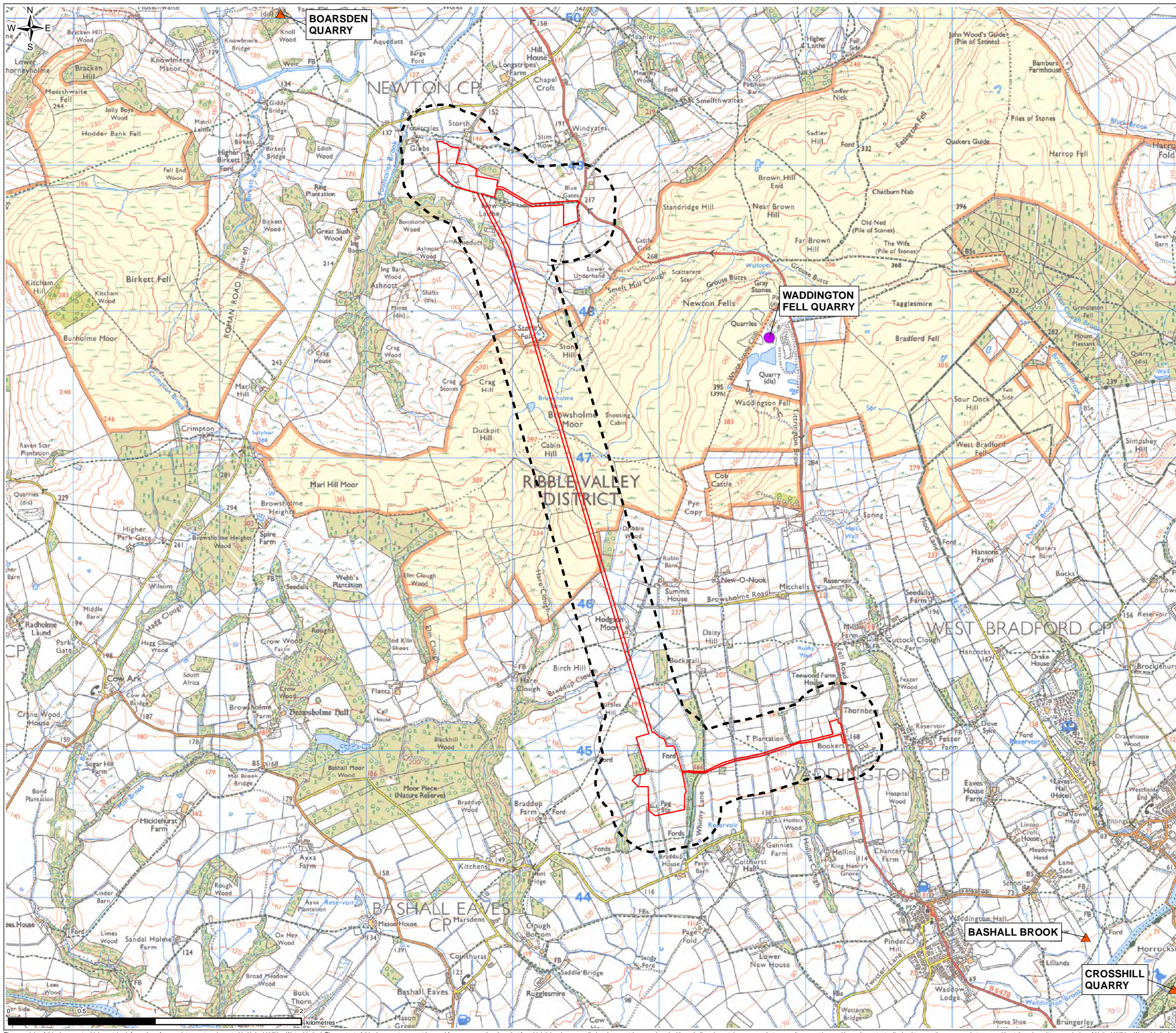


0	SP	TB	KY	Initial Issue	17/05/2021
VERSION	AUTH	CHKD	REVD	REASON FOR ISSUE	DATE



UNITED UTILITIES WATER LIMITED  
 HAWESWATER AQUEDUCT RESILIENCE PROGRAMME  
 GEOLOGICAL DESIGNATION AND RESOURCES  
 PAGE 1 OF 1

SCALE	1:25,000	SHEET SIZE	A3
DRAWING NUMBER	RVCB-MH-FIG-011-004	REVISION	0



The copyright of this document, which contains information of a proprietary nature, is vested in United Utilities Water Limited. The content of this document may not be used for purposes other than that for which it has been supplied and may not be reproduced, either wholly or in part, in any way whatsoever. It may not be used by, or its contents divulged to any other person whatsoever without the prior written permission of United Utilities Water Limited. Copyright Acknowledgement: Use of Ordnance Survey map data sanctioned by the controller of H.M. Stationery Office. OS Licence Number 100019326. Crown copyright reserved. Unauthorised production infringes copyright. © Natural England copyright. Contains Ordnance Survey data © Crown copyright and database right 2020.