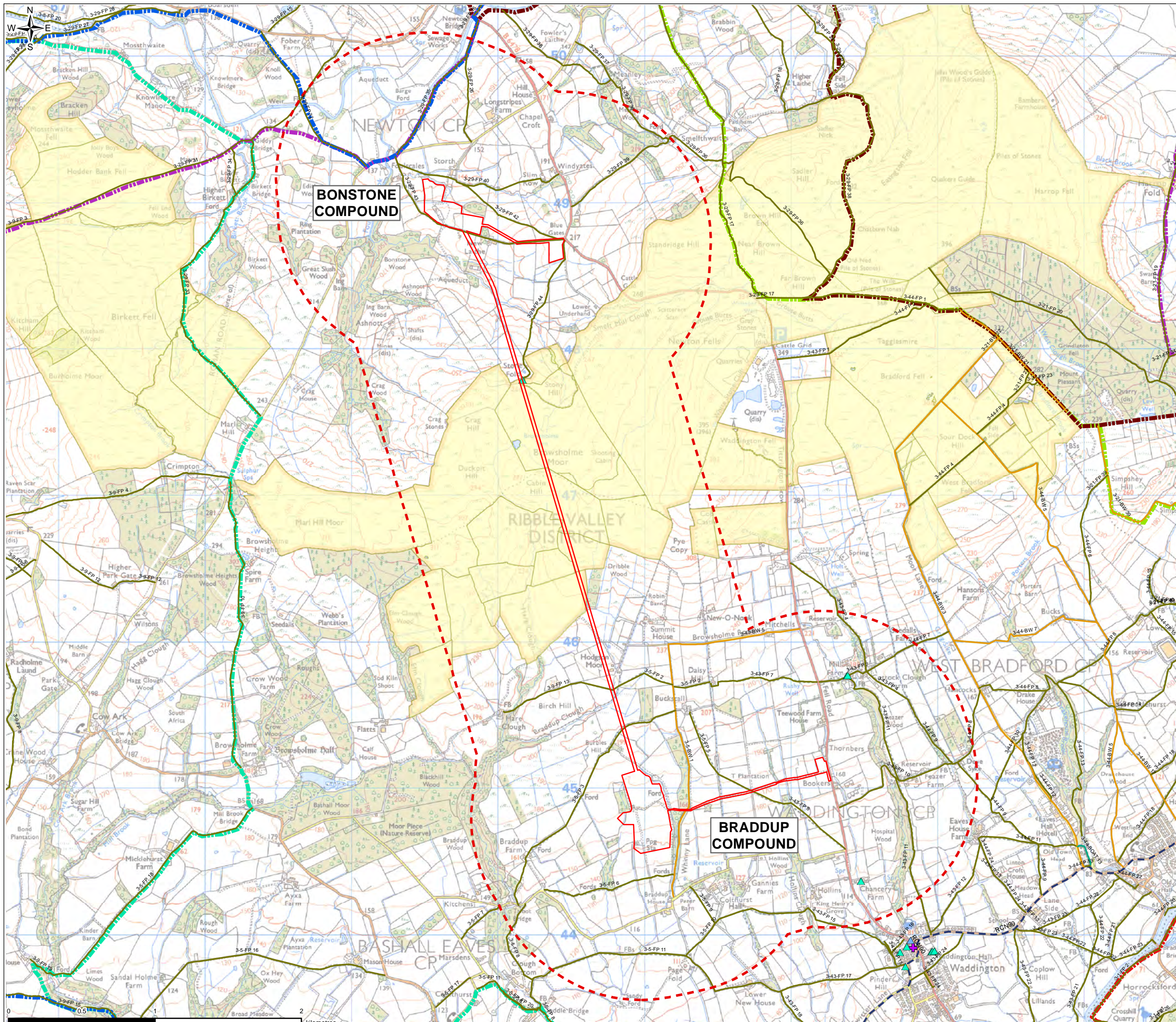
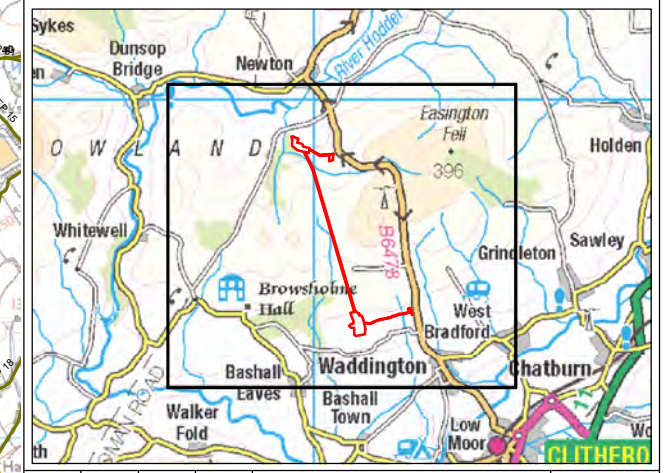


FIGURE 13.1



- Legend**
- Planning Application Boundary
 - 1km Assessment Area
 - On Road (Reclassified)
 - Bridleway
 - Footpath
 - National Cycle Network
 - ▲ Boarding / Guest House / Bed And Breakfast / Youth Hostel
 - ▲ Holiday Let / Accommodation / Short-Term Let
 - + Place Of Worship
 - CRoW Act 2000 Access Layer
 - Clitheroe 60k
 - Hodder Way
 - Lancashire Way Central Loop
 - Pendle Witches Way
 - Ribble Way
 - Tops of the North
 - Bridleway Open to All Traffic



VERSION	AUTH	CHKD	REVD	REASON FOR ISSUE	DATE
0	SP	TA	LH	Initial Issue	17/05/2021



UNITED UTILITIES WATER LIMITED
 HAWESWATER AQUEDUCT RESILIENCE PROGRAMME
 PUBLIC ACCESS AND RECREATION BASELINE
 PAGE 1 OF 1

SCALE 1:25,000	SHEET SIZE A3
DRAWING NUMBER RVBC-MH-FIG-013-001	REVISION 0

The copyright of this document, which contains information of a proprietary nature, is vested in United Utilities Water Limited. The content of this document may not be used for purposes other than that for which it has been supplied and may not be reproduced, either wholly or in part, in any way whatsoever. It may not be used by, or its contents divulged to any other person whatsoever without the prior written permission of United Utilities Water Limited. Copyright Acknowledgement: Use of Ordnance Survey map data sanctioned by the controller of H.M. Stationery Office. OS Licence Number 100019326. Crown copyright reserved. Unauthorised production infringes copyright. © Crown copyright and database rights 2020 Ordnance Survey 0100031673. Contains OS data © Crown copyright and database right 2020.