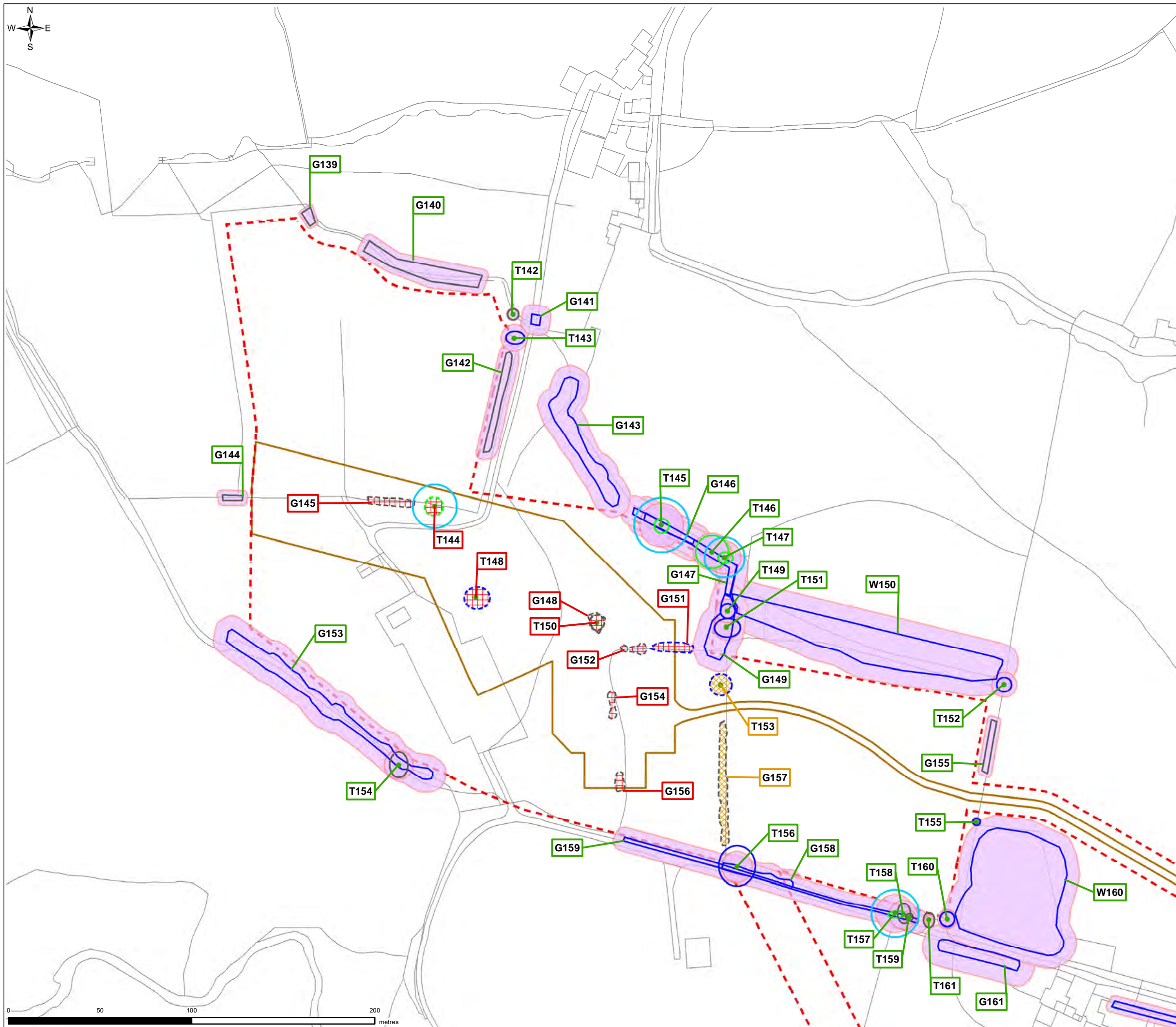
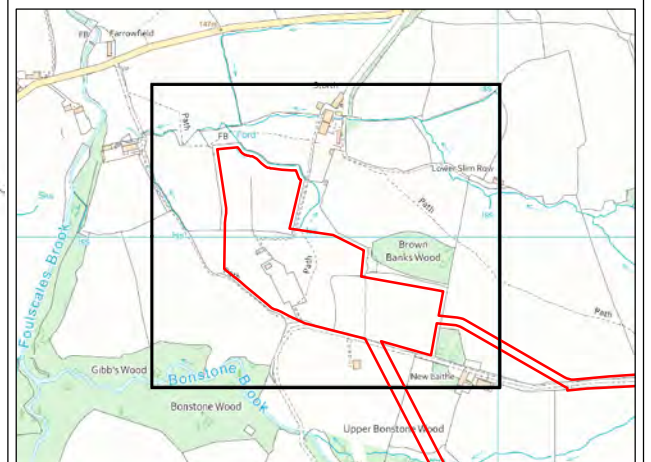


FIGURE 6.6



**Notes**  
 Tree survey features are prefixed with a 'T', 'G', 'H' or 'W' to identify respective feature type as an individual tree, tree group, hedgerow or woodland. Each survey feature is numbered sequentially from north to south for the full Proposed Programme of Works.  
 Plan to be viewed with corresponding AIA and used for planning purposes only. Indicative plan is not to be used for enabling works or construction purposes. Contractor to confirm with local planning authority all tree retention, protection and removal requirements prior to commencement of enabling works.  
 Indicative locations of survey features should be site-verified against a full topographical survey of existing stem locations at a later design stage prior to commencement of works.

- Legend**
- Planning Application Boundary
  - Proposed Core Working Area
  - Individual Tree
  - Category A Feature
  - Category B Feature
  - Category C Feature
  - Category U Feature
  - Root Protection Area
  - Standing Advice Buffer Zone
  - Category A Feature at Risk
  - Category B Feature at Risk
  - Category C Feature at Risk
  - Category U Feature at Risk
  - Features to be Retained
  - Category A Feature to be Removed
  - Category B Feature to be Removed
  - Category C Feature to be Removed
  - Category U Feature to be Removed
  - RAG Assessment
  - Trees to be removed/partially removed
  - Trees at risk of removal aiming to retain
  - Trees to be retained with protection measures



0	SP	DC	MW	Initial Issue	26/02/2021
VERSION	AUTH	CHKD	REVD	REASON FOR ISSUE	DATE

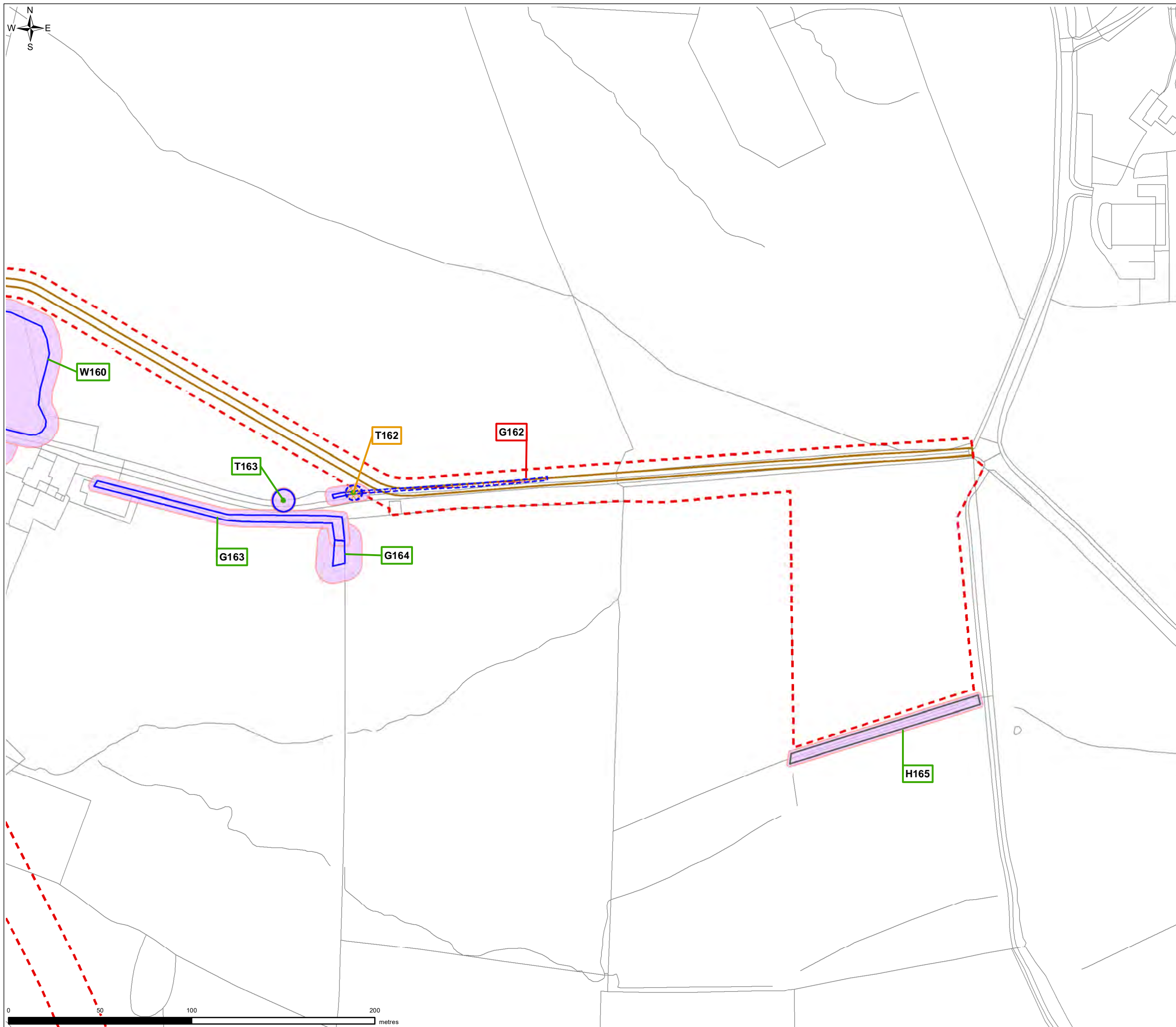


UNITED UTILITIES WATER LIMITED  
 HAWESWATER AQUEDUCT RESILIENCE PROGRAMME  
 PRELIMINARY TREES AT RISK PLAN  
 PAGE 1 OF 6

SCALE 1:2,000	SHEET SIZE A3
DRAWING NUMBER RVBC-MH-FIG-006-006	REVISION 0

The copyright of this document, which contains information of a proprietary nature, is vested in United Utilities Water Limited. The content of this document may not be used for purposes other than that for which it has been supplied and may not be reproduced, either wholly or in part, in any way whatsoever. It may not be used by, or its contents divulged to any other person whatsoever without the prior written permission of United Utilities Water Limited. Copyright Acknowledgement: Use of Ordnance Survey map data sanctioned by the controller of H.M. Stationery Office. OS Licence Number 100019326. Crown copyright reserved. Unauthorised production infringes copyright. © Crown copyright and database rights 2020 Ordnance Survey 0100031673. Contains public sector information licensed under the Open Government Licence v3.0. © Natural England copyright. Contains Ordnance Survey data © Crown copyright and database right 2020.

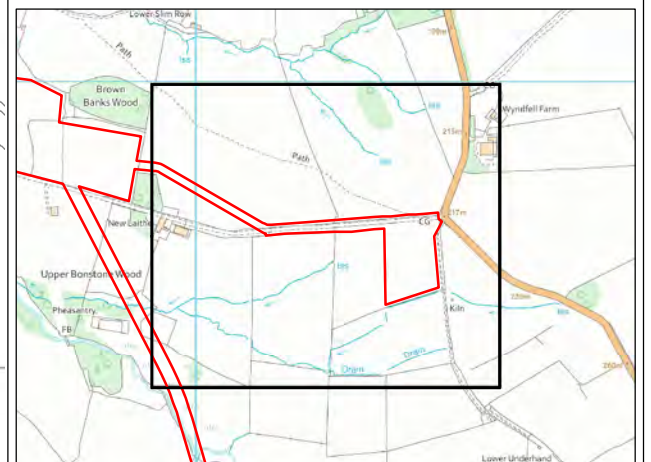
FIGURE 6.6



**Notes**  
 Tree survey features are prefixed with a 'T', 'G', 'H' or 'W' to identify respective feature type as an individual tree, tree group, hedgerow or woodland. Each survey feature is numbered sequentially from north to south for the full Proposed Programme of Works.  
 Plan to be viewed with corresponding AIA and used for planning purposes only. Indicative plan is not to be used for enabling works or construction purposes. Contractor to confirm with local planning authority all tree retention, protection and removal requirements prior to commencement of enabling works.  
 Indicative locations of survey features should be site-verified against a full topographical survey of existing stem locations at a later design stage prior to commencement of works.

**Legend**

Planning Application Boundary	Category U Feature at Risk
Proposed Core Working Area	Features to be Removed
<b>Tree Survey Information</b>	Category A Feature to be Removed
Individual Tree	Category B Feature to be Removed
<b>Features to be Retained</b>	Category C Feature to be Removed
Category A Feature	Category U Feature to be Removed
Category B Feature	<b>RAG Assessment</b>
Category C Feature	Trees to be removed/partially removed
Category U Feature	Trees at risk of removal aiming to retain
Root Protection Area	Trees to be retained with protection measures
<b>Features at Risk</b>	
Category A Feature at Risk	
Category B Feature at Risk	
Category C Feature at Risk	



0	SP	DC	MW	Initial Issue	26/02/2021
VERSION	AUTH	CHKD	REVD	REASON FOR ISSUE	DATE

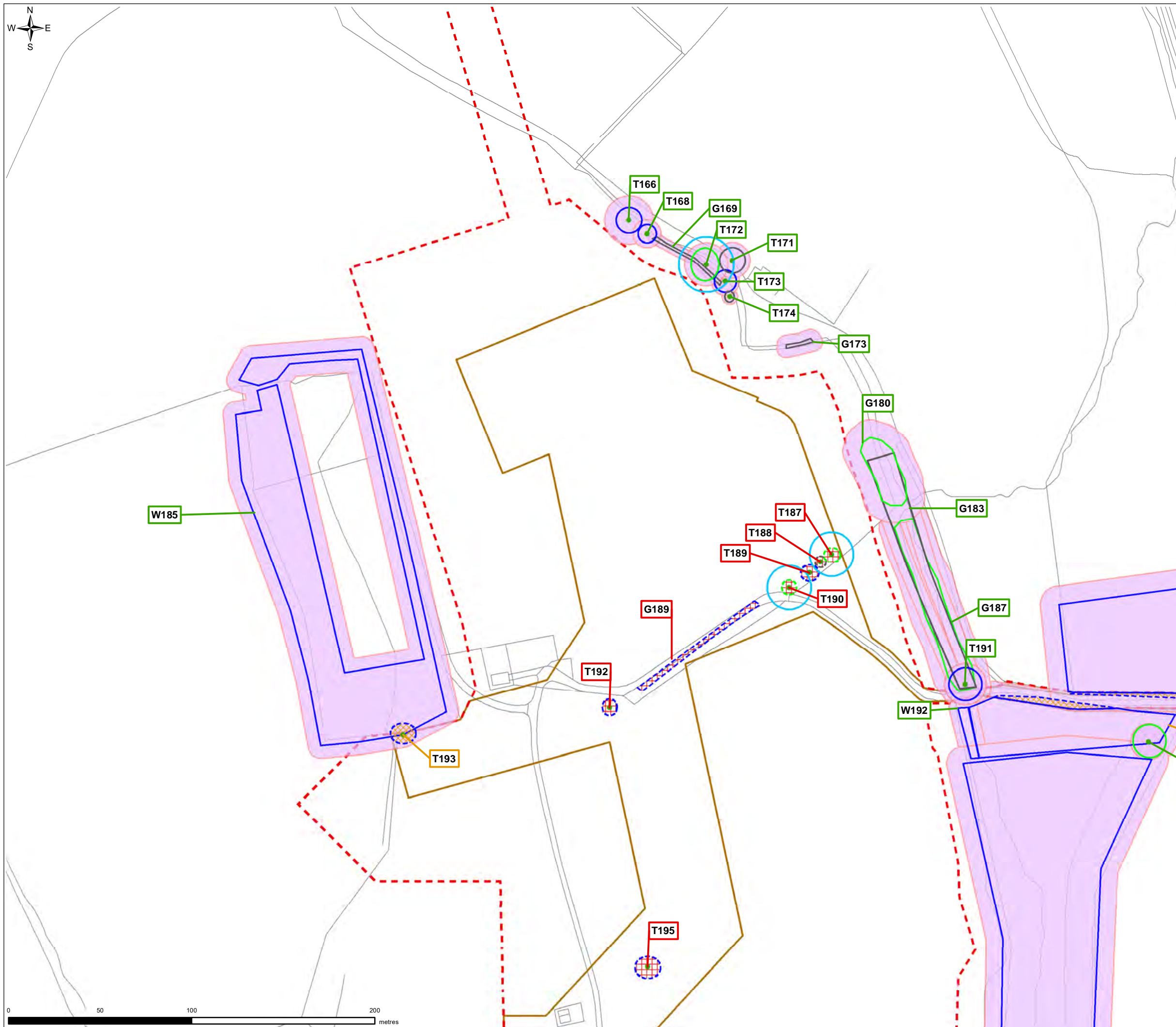


UNITED UTILITIES WATER LIMITED  
 HAWESWATER AQUEDUCT RESILIENCE PROGRAMME  
 PRELIMINARY TREES AT RISK PLAN  
 PAGE 2 OF 6

SCALE 1:2,000	SHEET SIZE A3
DRAWING NUMBER RVBC-MH-FIG-006-006	REVISION 0

The copyright of this document, which contains information of a proprietary nature, is vested in United Utilities Water Limited. The content of this document may not be used for purposes other than that for which it has been supplied and may not be reproduced, either wholly or in part, in any way whatsoever. It may not be used by, or its contents divulged to any other person whatsoever without the prior written permission of United Utilities Water Limited. Copyright Acknowledgement: Use of Ordnance Survey map data sanctioned by the controller of H.M. Stationery Office. OS Licence Number 100019326. Crown copyright reserved. Unauthorised production infringes copyright. © Crown copyright and database rights 2020 Ordnance Survey 0100031673. Contains public sector information licensed under the Open Government Licence v3.0. © Natural England copyright. Contains Ordnance Survey data © Crown copyright and database right 2020.

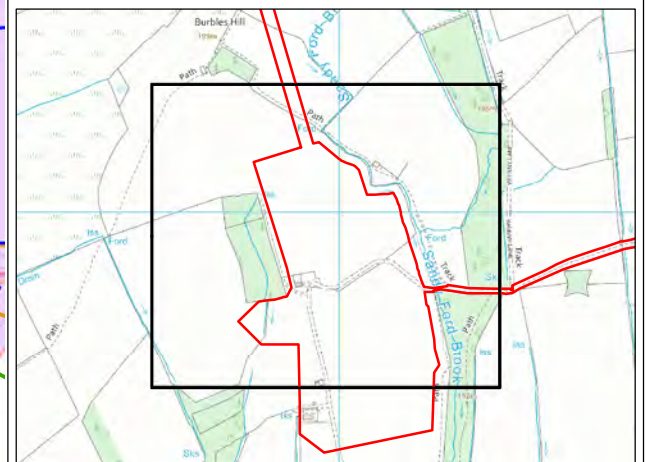
FIGURE 6.6



**Notes**  
 Tree survey features are prefixed with a 'T', 'G', 'H' or 'W' to identify respective feature type as an individual tree, tree group, hedgerow or woodland. Each survey feature is numbered sequentially from north to south for the full Proposed Programme of Works.  
 Plan to be viewed with corresponding AIA and used for planning purposes only. Indicative plan is not to be used for enabling works or construction purposes. Contractor to confirm with local planning authority all tree retention, protection and removal requirements prior to commencement of enabling works.  
 Indicative locations of survey features should be site-verified against a full topographical survey of existing stem locations at a later design stage prior to commencement of works.

**Legend**

Planning Application Boundary	Category C Feature at Risk
Proposed Core Working Area	Category U Feature at Risk
<b>Tree Survey Information</b>	<b>Features to be Removed</b>
Individual Tree	Category A Feature to be Removed
<b>Features to be Retained</b>	Category B Feature to be Removed
Category A Feature	Category C Feature to be Removed
Category B Feature	Category U Feature to be Removed
Category C Feature	<b>RAG Assessment</b>
Category U Feature	Trees to be removed/partially removed
Root Protection Area	Trees at risk of removal aiming to retain
Standing Advice Buffer Zone	Trees to be retained with protection measures
<b>Features at Risk</b>	
Category A Feature at Risk	
Category B Feature at Risk	



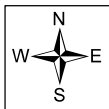
0	SP	DC	MW	Initial Issue	26/02/2021
VERSION	AUTH	CHKD	REVD	REASON FOR ISSUE	DATE



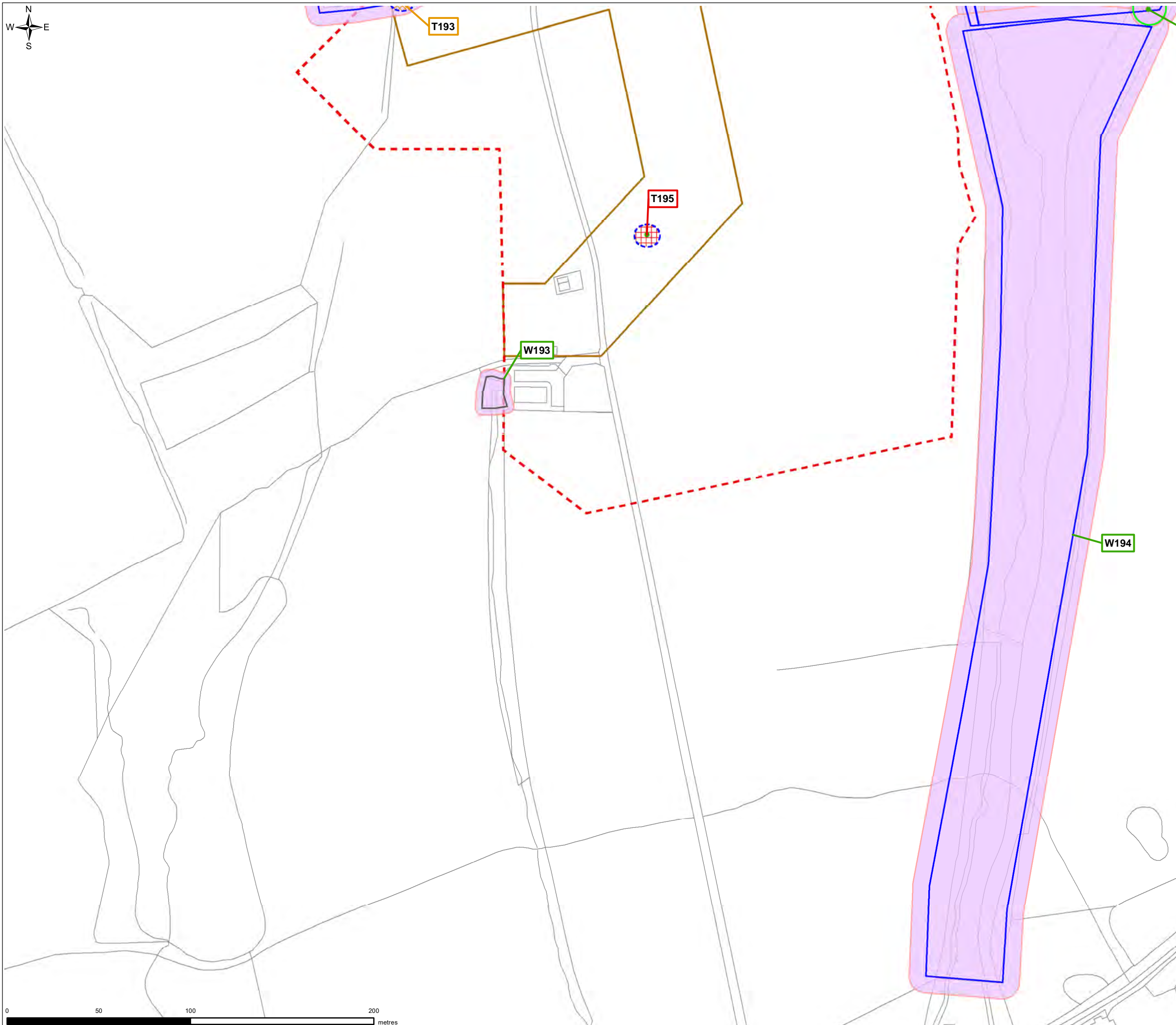
UNITED UTILITIES WATER LIMITED  
 HAWESWATER AQUEDUCT RESILIENCE PROGRAMME  
 PRELIMINARY TREES AT RISK PLAN  
 PAGE 3 OF 6

SCALE 1:2,000	SHEET SIZE A3
DRAWING NUMBER RVBC-MH-FIG-006-006	REVISION 0

The copyright of this document, which contains information of a proprietary nature, is vested in United Utilities Water Limited. The content of this document may not be used for purposes other than that for which it has been supplied and may not be reproduced, either wholly or in part, in any way whatsoever. It may not be used by, or its contents divulged to any other person whatsoever without the prior written permission of United Utilities Water Limited. Copyright Acknowledgement: Use of Ordnance Survey map data sanctioned by the controller of H.M. Stationery Office. OS Licence Number 100019326. Crown copyright reserved. Unauthorised production infringes copyright. © Crown copyright and database rights 2020 Ordnance Survey 0100031673. Contains public sector information licensed under the Open Government Licence v3.0. © Natural England copyright. Contains Ordnance Survey data © Crown copyright and database right 2020.

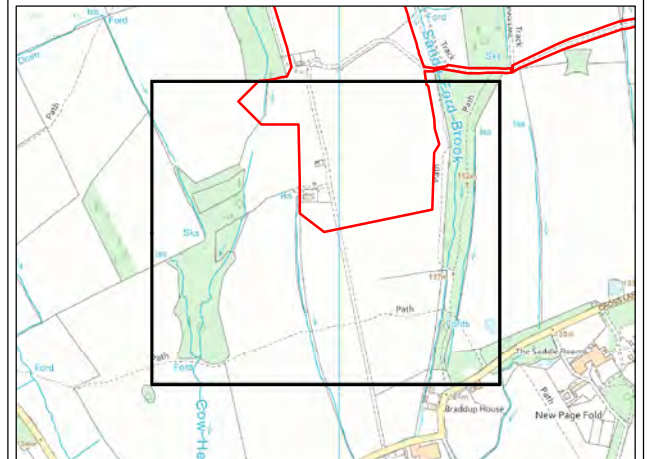


**FIGURE 6.6**



**Notes**  
 Tree survey features are prefixed with a 'T', 'G', 'H' or 'W' to identify respective feature type as an individual tree, tree group, hedgerow or woodland. Each survey feature is numbered sequentially from north to south for the full Proposed Programme of Works.  
 Plan to be viewed with corresponding AIA and used for planning purposes only. Indicative plan is not to be used for enabling works or construction purposes. Contractor to confirm with local planning authority all tree retention, protection and removal requirements prior to commencement of enabling works.  
 Indicative locations of survey features should be site-verified against a full topographical survey of existing stem locations at a later design stage prior to commencement of works.

- Legend**
- Planning Application Boundary
  - Proposed Core Working Area
  - Individual Tree
  - Category A Feature
  - Category B Feature
  - Category C Feature
  - Category U Feature
  - Root Protection Area
  - Category U Feature at Risk
  - Category A Feature to be Removed
  - Category B Feature to be Removed
  - Category C Feature to be Removed
  - Category U Feature to be Removed
  - RAG Assessment
  - Trees to be removed/partially removed
  - Trees at risk of removal aiming to retain
  - Trees to be retained with protection measures



0	SP	DC	MW	Initial Issue	26/02/2021
VERSION	AUTH	CHKD	REVD	REASON FOR ISSUE	DATE



UNITED UTILITIES WATER LIMITED  
 HAWESWATER AQUEDUCT RESILIENCE PROGRAMME  
 PRELIMINARY TREES AT RISK PLAN  
 PAGE 4 OF 6

SCALE 1:2,000	SHEET SIZE A3
DRAWING NUMBER RVBC-MH-FIG-006-006	REVISION 0

The copyright of this document, which contains information of a proprietary nature, is vested in United Utilities Water Limited. The content of this document may not be used for purposes other than that for which it has been supplied and may not be reproduced, either wholly or in part, in any way whatsoever. It may not be used by, or its contents divulged to any other person whatsoever without the prior written permission of United Utilities Water Limited. Copyright Acknowledgement: Use of Ordnance Survey map data sanctioned by the controller of H.M. Stationery Office. OS Licence Number 100019326. Crown copyright reserved. Unauthorised production infringes copyright. © Crown copyright and database rights 2020 Ordnance Survey 0100031673. Contains public sector information licensed under the Open Government Licence v3.0. © Natural England copyright. Contains Ordnance Survey data © Crown copyright and database right 2020.



**FIGURE 6.6**

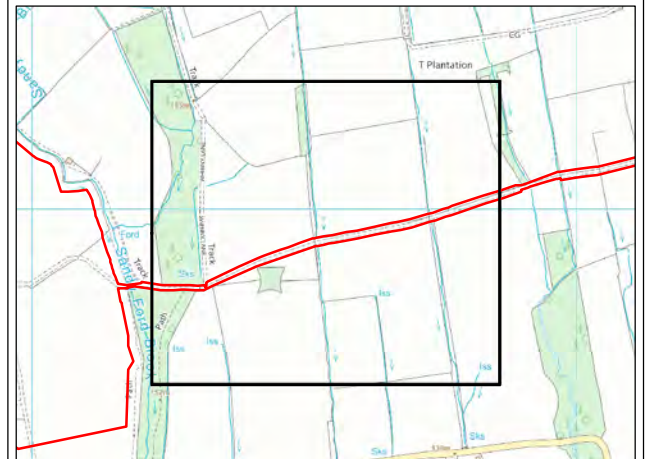
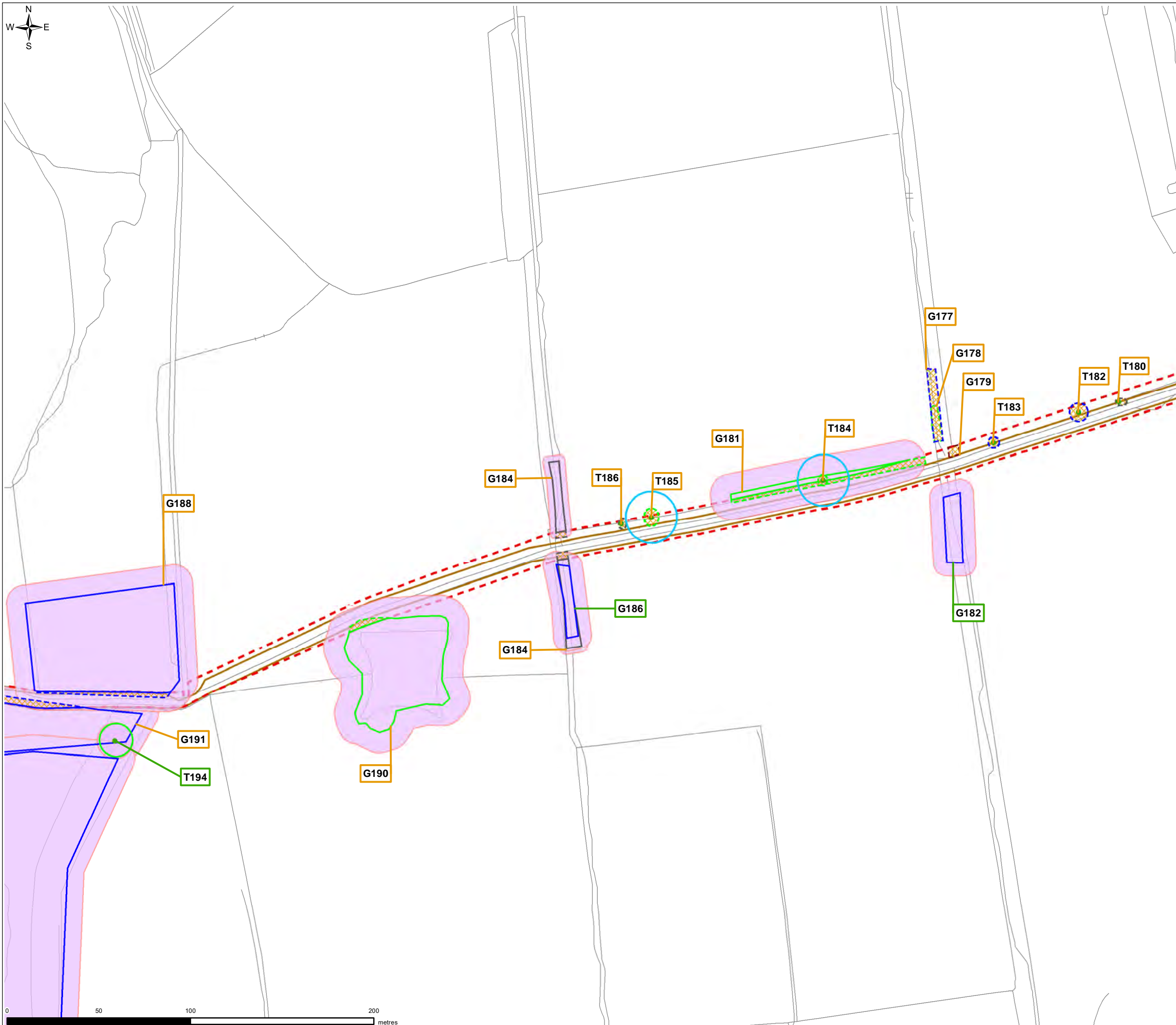
**Notes**  
 Tree survey features are prefixed with a 'T', 'G', 'H' or 'W' to identify respective feature type as an individual tree, tree group, hedgerow or woodland. Each survey feature is numbered sequentially from north to south for the full Proposed Programme of Works.

Plan to be viewed with corresponding AIA and used for planning purposes only. Indicative plan is not to be used for enabling works or construction purposes. Contractor to confirm with local planning authority all tree retention, protection and removal requirements prior to commencement of enabling works.

Indicative locations of survey features should be site-verified against a full topographical survey of existing stem locations at a later design stage prior to commencement of works.

**Legend**

- Planning Application Boundary
- Proposed Core Working Area
- Individual Tree
- Category A Feature
- Category B Feature
- Category C Feature
- Category U Feature
- Root Protection Area
- Standing Advice Buffer Zone
- Category A Feature at Risk
- Category B Feature at Risk
- Category C Feature at Risk
- Category U Feature at Risk
- Features to be Removed
- Category A Feature to be Removed
- Category B Feature to be Removed
- Category C Feature to be Removed
- Category U Feature to be Removed
- RAG Assessment
- Trees to be removed/partially removed
- Trees at risk of removal aiming to retain
- Trees to be retained with protection measures



0	SP	DC	MW	Initial Issue	26/02/2021
VERSION	AUTH	CHKD	REVD	REASON FOR ISSUE	DATE



UNITED UTILITIES WATER LIMITED  
 HAWESWATER AQUEDUCT RESILIENCE PROGRAMME  
 PRELIMINARY TREES AT RISK PLAN  
 PAGE 5 OF 6

SCALE 1:2,000	SHEET SIZE A3
DRAWING NUMBER RVBC-MH-FIG-006-006	REVISION 0

The copyright of this document, which contains information of a proprietary nature, is vested in United Utilities Water Limited. The content of this document may not be used for purposes other than that for which it has been supplied and may not be reproduced, either wholly or in part, in any way whatsoever. It may not be used by, or its contents divulged to any other person whatsoever without the prior written permission of United Utilities Water Limited. Copyright Acknowledgement: Use of Ordnance Survey map data sanctioned by the controller of H.M. Stationery Office. OS Licence Number 100019326. Crown copyright reserved. Unauthorised production infringes copyright. © Crown copyright and database rights 2020 Ordnance Survey 0100031673. Contains public sector information licensed under the Open Government Licence v3.0. © Natural England copyright. Contains Ordnance Survey data © Crown copyright and database right 2020.

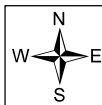
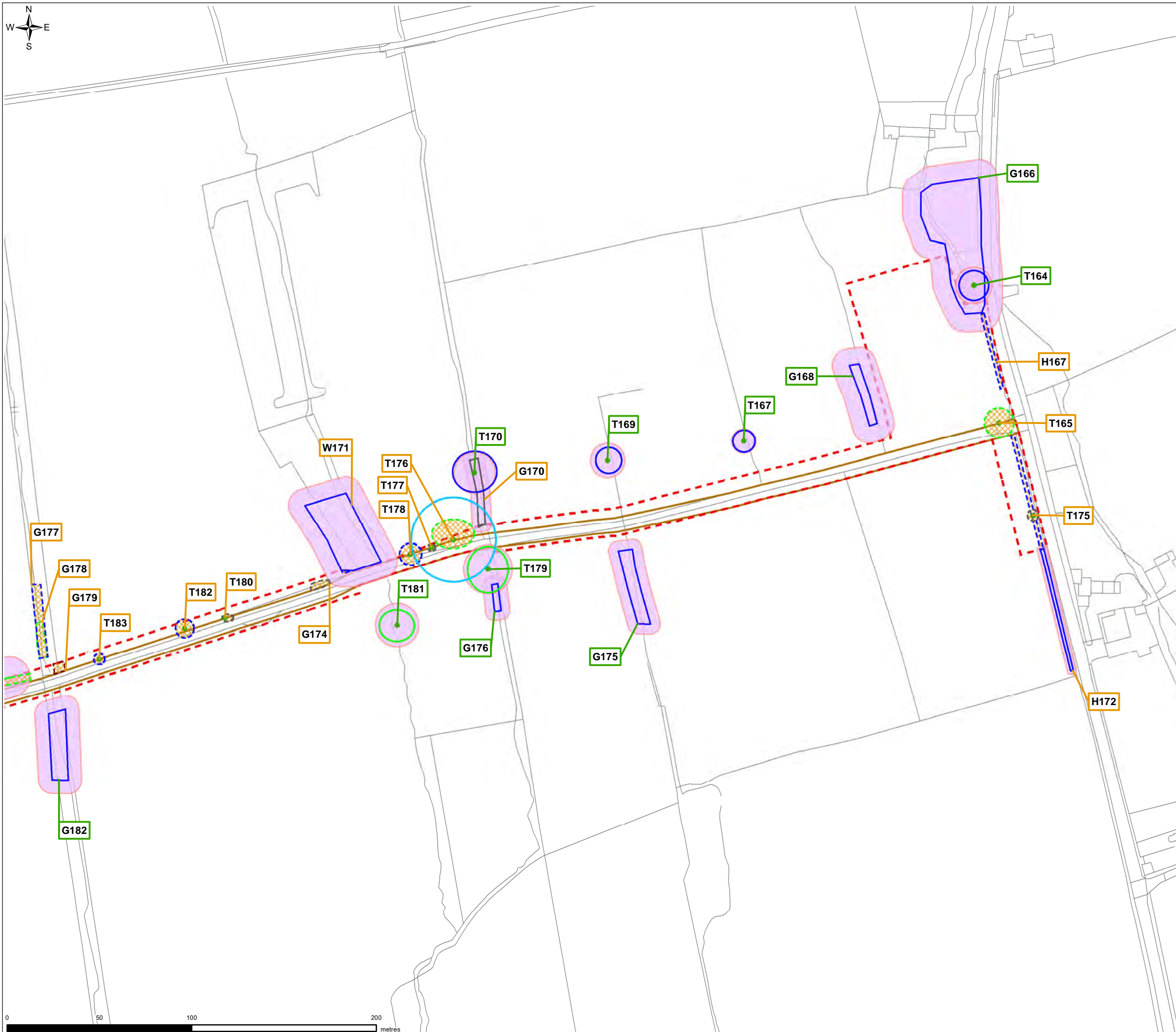


FIGURE 6.6



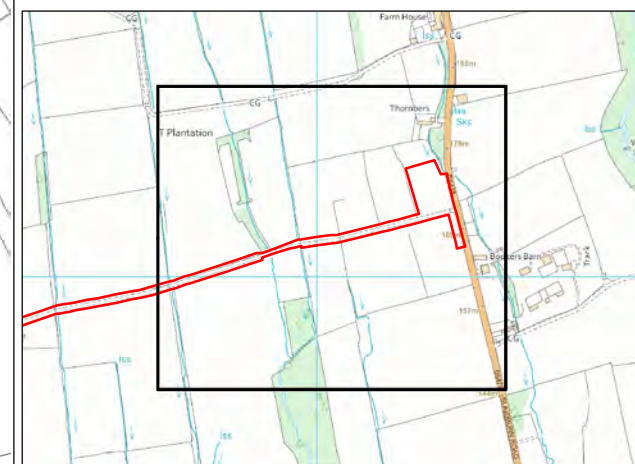
**Notes**  
 Tree survey features are prefixed with a 'T', 'G', 'H' or 'W' to identify respective feature type as an individual tree, tree group, hedgerow or woodland. Each survey feature is numbered sequentially from north to south for the full Proposed Programme of Works.

Plan to be viewed with corresponding AIA and used for planning purposes only. Indicative plan is not to be used for enabling works or construction purposes. Contractor to confirm with local planning authority all tree retention, protection and removal requirements prior to commencement of enabling works.

Indicative locations of survey features should be site-verified against a full topographical survey of existing stem locations at a later design stage prior to commencement of works.

**Legend**

- Planning Application Boundary
- Proposed Core Working Area
- Individual Tree
- Category A Feature
- Category B Feature
- Category C Feature
- Category U Feature
- Root Protection Area
- Standing Advice Buffer Zone
- Category A Feature at Risk
- Category B Feature at Risk
- Category C Feature at Risk
- Category U Feature at Risk
- Category A Feature to be Removed
- Category B Feature to be Removed
- Category C Feature to be Removed
- Category U Feature to be Removed
- Trees to be removed/partially removed
- Trees at risk of removal aiming to retain
- Trees to be retained with protection measures



0	SP	DC	MW	Initial Issue	26/02/2021
VERSION	AUTH	CHKD	REVD	REASON FOR ISSUE	DATE



UNITED UTILITIES WATER LIMITED  
 HAWESWATER AQUEDUCT RESILIENCE PROGRAMME  
 PRELIMINARY TREES AT RISK PLAN  
 PAGE 6 OF 6

SCALE 1:2,000	SHEET SIZE A3
DRAWING NUMBER RVBC-MH-FIG-006-006	REVISION 0

The copyright of this document, which contains information of a proprietary nature, is vested in United Utilities Water Limited. The content of this document may not be used for purposes other than that for which it has been supplied and may not be reproduced, either wholly or in part, in any way whatsoever. It may not be used by, or its contents divulged to any other person whatsoever without the prior written permission of United Utilities Water Limited. Copyright Acknowledgement: Use of Ordnance Survey map data sanctioned by the controller of H.M. Stationery Office. OS Licence Number 100019326. Crown copyright reserved. Unauthorised production infringes copyright. © Crown copyright and database rights 2020 Ordnance Survey 0100031673. Contains public sector information licensed under the Open Government Licence v3.0. © Natural England copyright. Contains Ordnance Survey data © Crown copyright and database right 2020.