

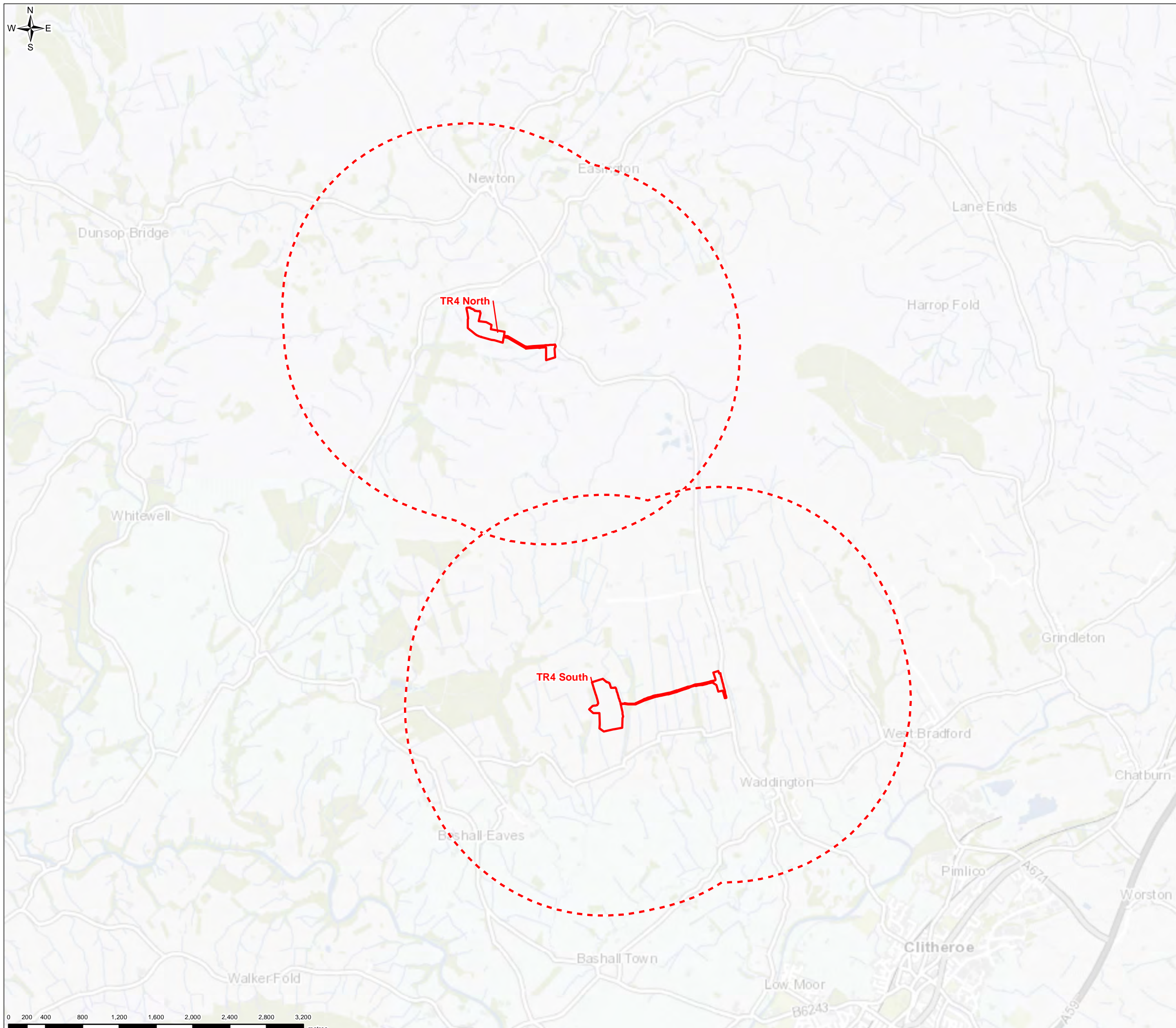


FIGURE 9A.4

Legend

-  Compound location
-  Compound location - 2km buffer



0	CW	AN	VG	Initial Issue	18/03/2021
VERSION	AUTH	CHKD	REVD	REASON FOR ISSUE	DATE

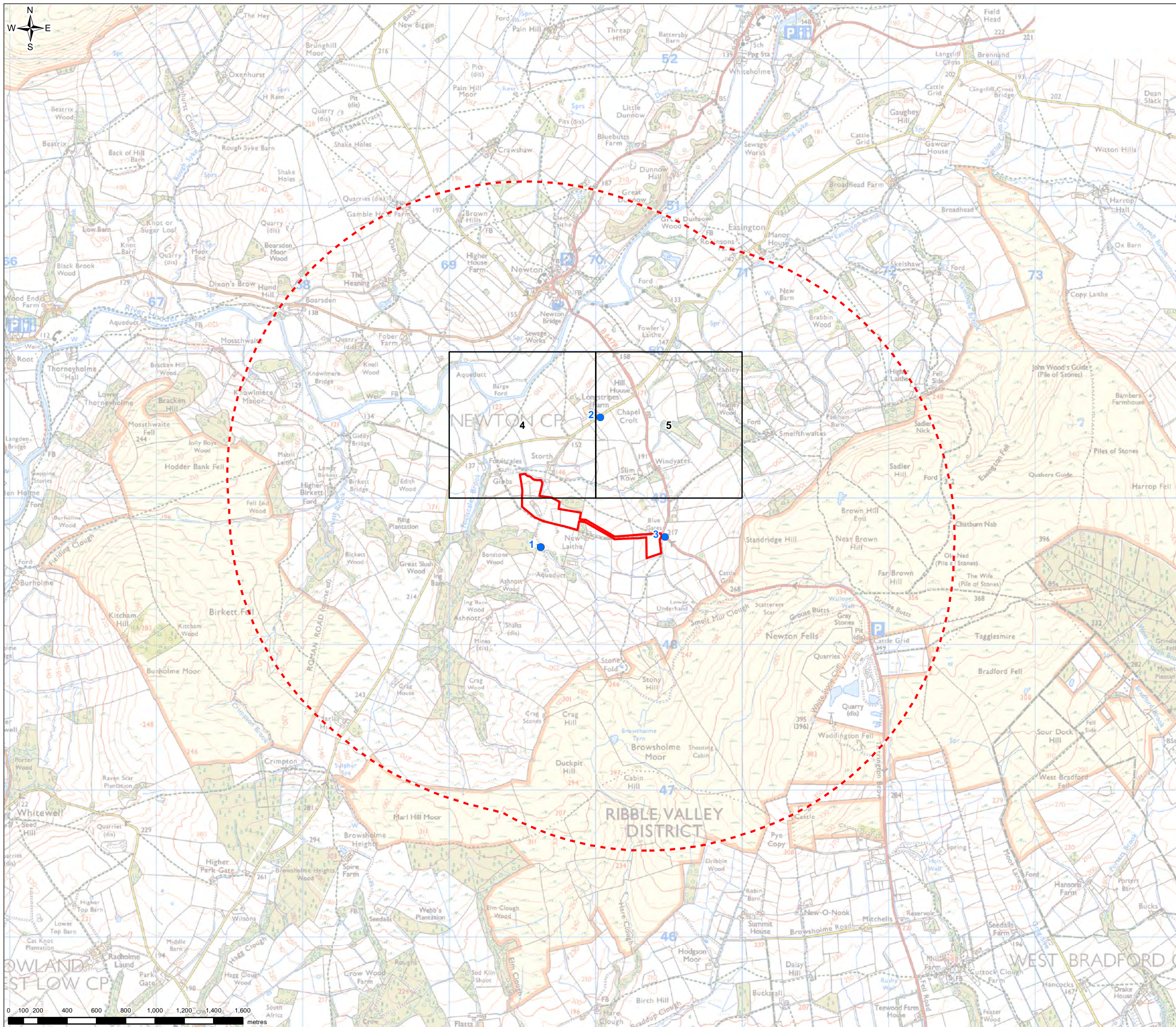


UNITED UTILITIES WATER LIMITED
 HAWESWATER AQUEDUCT RESILIENCE PROGRAMME
 SPECIES DESKTOP RECORDS - OVERVIEW
 MARL HILL SECTION
 PAGE 1 of 11

SCALE 1:40,000	SHEET SIZE A3
DRAWING NUMBER RVBC-MH-FIG-009-01-04	REVISION 0

The copyright of this document, which contains information of a proprietary nature, is vested in United Utilities Water Limited. The content of this document may not be used for purposes other than that for which it has been supplied and may not be reproduced, either wholly or in part, in any way whatsoever. It may not be used by, or its contents divulged to any other person whatsoever without the prior written permission of United Utilities Water Limited. Copyright Acknowledgement: Use of Ordnance Survey map data sanctioned by the controller of H.M. Stationery Office. OS Licence Number 100019326. Crown copyright reserved. Unauthorised production infringes copyright. Contains OS data © Crown copyright and database right 2021. Contains data provided by Cumbria Biodiversity Data Centre; the Lancashire Environment Record Network and Greater Manchester Ecology Unit.

FIGURE 9A.4



Legend

- Compound location
- Compound location - 2km buffer

Accuracy of Data (Refer to Desktop Assessment Report for Species Records Identifier for Desktop Records)

- 1 and 10m
- 1000m



0	CW	AN	VG	Initial Issue	18/03/2021
VERSION	AUTH	CHKD	REVD	REASON FOR ISSUE	DATE

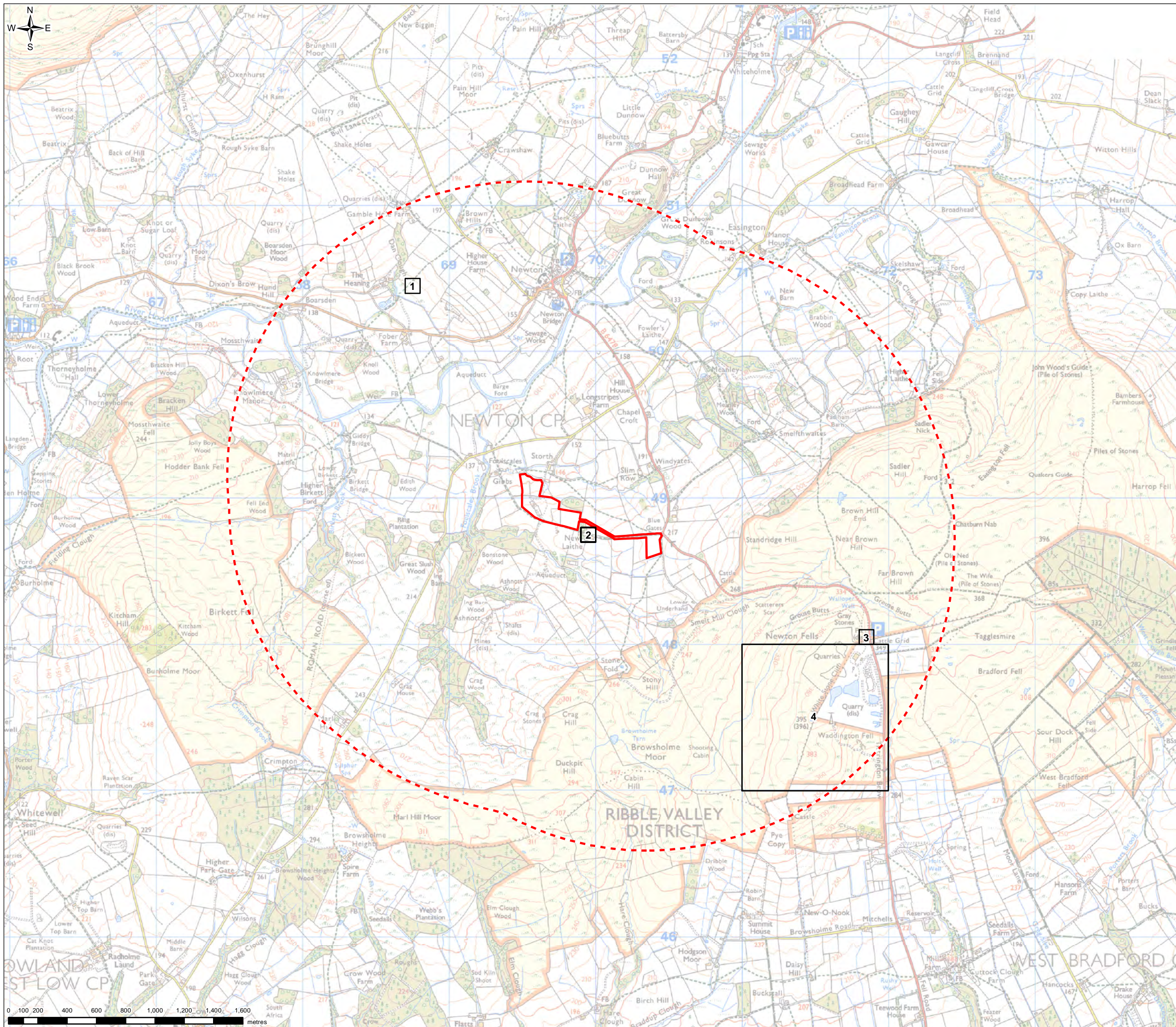


UNITED UTILITIES WATER LIMITED
 HAWESWATER AQUEDUCT RESILIENCE PROGRAMME
 SPECIES DESKTOP RECORDS - BIRD
 MARL HILL SECTION
 PAGE 2 of 11

SCALE 1:25,000	SHEET SIZE A3
DRAWING NUMBER RVCB-MH-FIG-009-01-04	REVISION 0

The copyright of this document, which contains information of a proprietary nature, is vested in United Utilities Water Limited. The content of this document may not be used for purposes other than that for which it has been supplied and may not be reproduced, either wholly or in part, in any way whatsoever. It may not be used by, or its contents divulged to any other person whatsoever without the prior written permission of United Utilities Water Limited. Copyright Acknowledgement: Use of Ordnance Survey map data sanctioned by the controller of H.M. Stationery Office. OS Licence Number 100019326. Crown copyright reserved. Unauthorised production infringes copyright. Contains OS data © Crown copyright and database right 2021. Contains data provided by Cumbria Biodiversity Data Centre, the Lancashire Environment Record Network and Greater Manchester Ecology Unit.

FIGURE 9A.4



Legend


- Compound location
- Compound location - 2km buffer

Accuracy of Data (Refer to Desktop Assessment Report for Species Records Identifier for Desktop Records)

- 100m
- 1000m



0	CW	AN	VG	Initial Issue	18/03/2021
VERSION	AUTH	CHKD	REVD	REASON FOR ISSUE	DATE



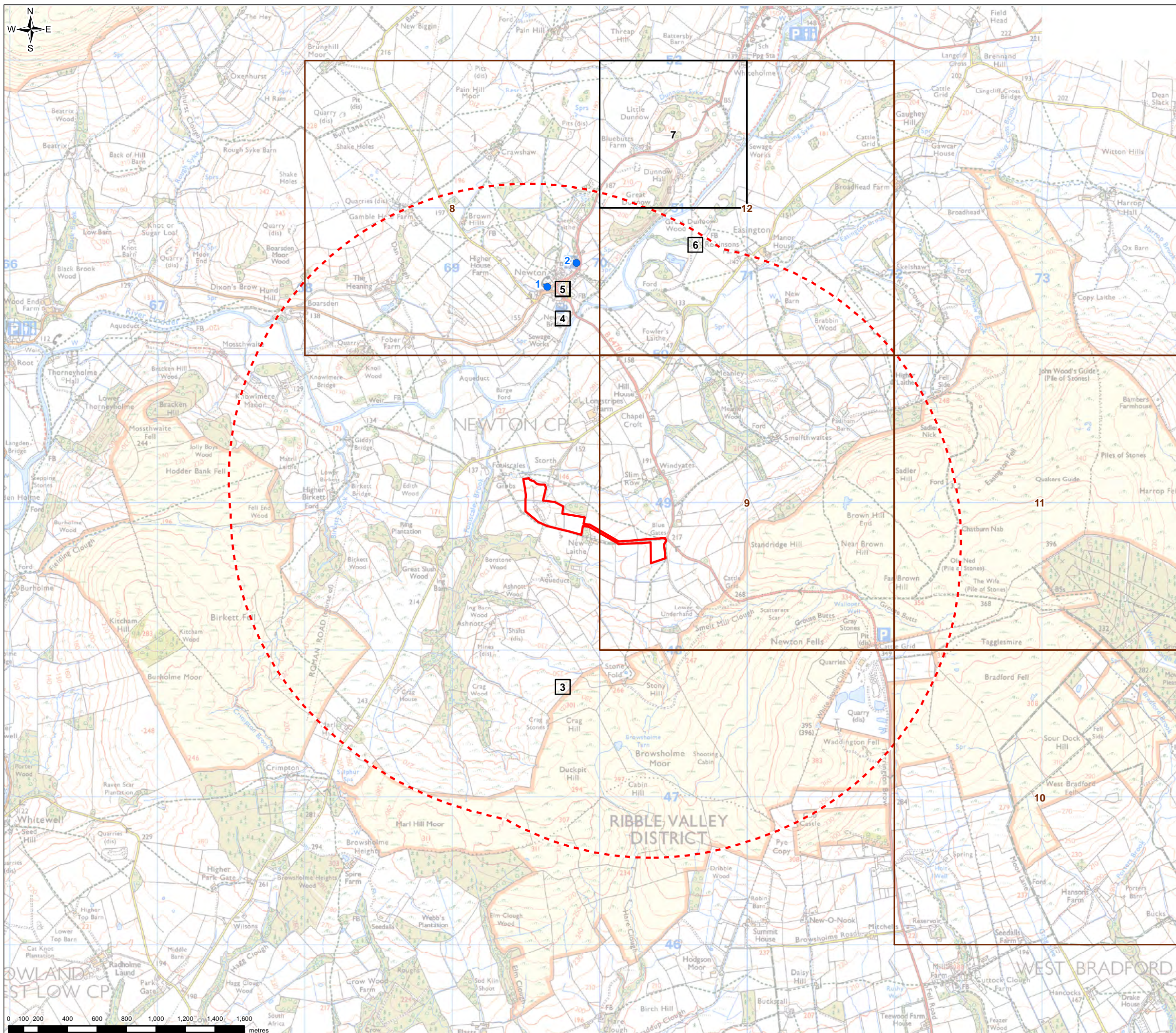
United Utilities
Water for the North West

UNITED UTILITIES WATER LIMITED
HAWESWATER AQUEDUCT RESILIENCE PROGRAMME
SPECIES DESKTOP RECORDS - INSECT
MARL HILL SECTION
PAGE 3 of 11

SCALE 1:25,000	SHEET SIZE A3
DRAWING NUMBER RVCB-MH-FIG-009-01-04	REVISION 0

The copyright of this document, which contains information of a proprietary nature, is vested in United Utilities Water Limited. The content of this document may not be used for purposes other than that for which it has been supplied and may not be reproduced, either wholly or in part, in any way whatsoever. It may not be used by, or its contents divulged to any other person whatsoever without the prior written permission of United Utilities Water Limited. Copyright Acknowledgement: Use of Ordnance Survey map data sanctioned by the controller of H.M. Stationery Office. OS Licence Number 100019326. Crown copyright reserved. Unauthorised production infringes copyright. Contains OS data © Crown copyright and database right 2021. Contains data provided by Cumbria Biodiversity Data Centre, the Lancashire Environment Record Network and Greater Manchester Ecology Unit.

FIGURE 9A.4



Legend

- Compound location
- Compound location - 2km buffer

Accuracy of Data (Refer to Desktop Assessment Report for Species Records Identifier for Desktop Records)

- 1 and 10m
- 100m
- 1000m
- 2000m



0	CW	AN	VG	Initial Issue	18/03/2021
VERSION	AUTH	CHKD	REVD	REASON FOR ISSUE	DATE

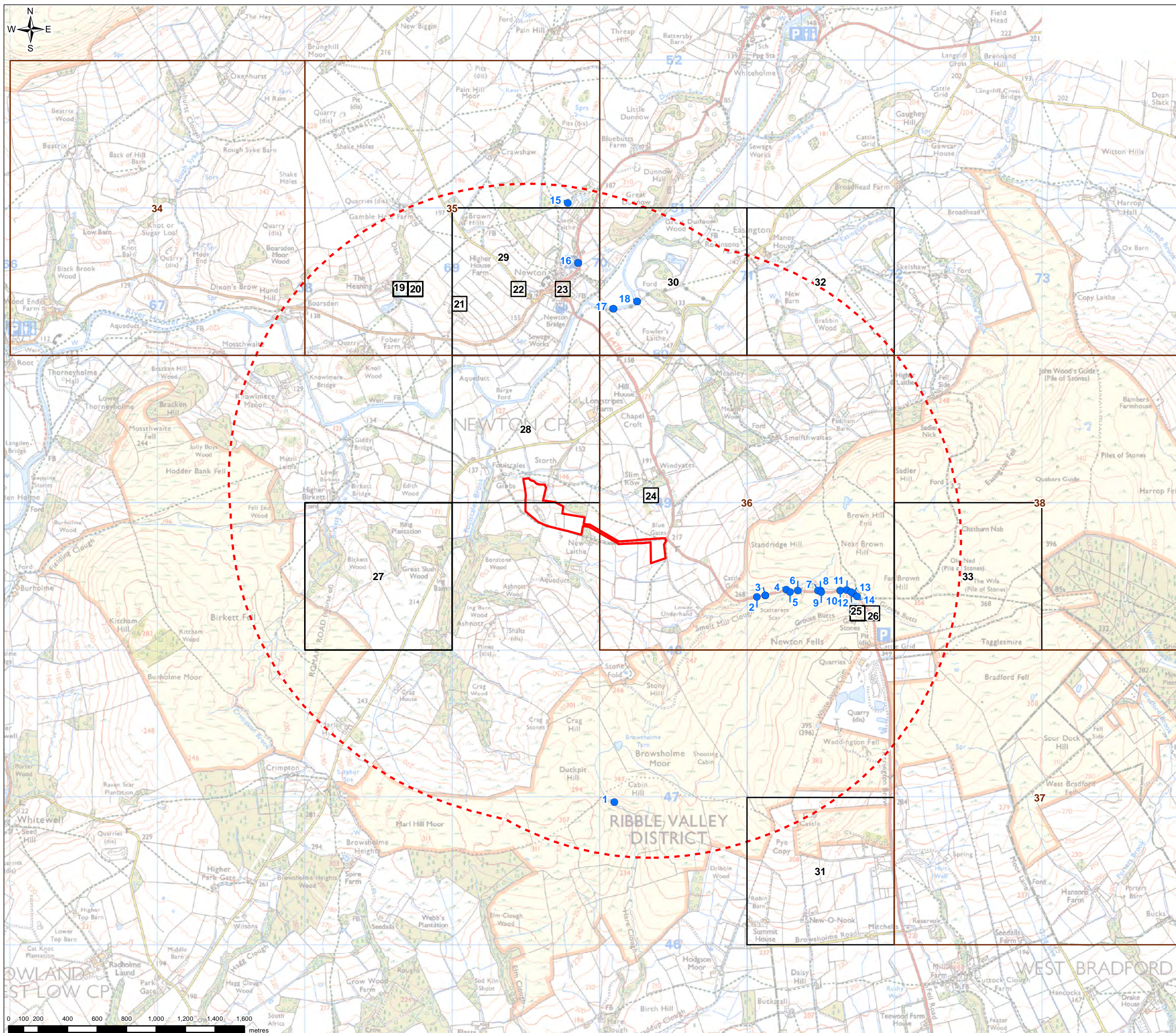


UNITED UTILITIES WATER LIMITED
 HAWESWATER AQUEDUCT RESILIENCE PROGRAMME
 SPECIES DESKTOP RECORDS - MAMMAL
 MARL HILL SECTION
 PAGE 4 of 11

SCALE 1:25,000	SHEET SIZE A3
DRAWING NUMBER RVBC-MH-FIG-009-01-04	REVISION 0

The copyright of this document, which contains information of a proprietary nature, is vested in United Utilities Water Limited. The content of this document may not be used for purposes other than that for which it has been supplied and may not be reproduced, either wholly or in part, in any way whatsoever. It may not be used by, or its contents divulged to any other person whatsoever without the prior written permission of United Utilities Water Limited. Copyright Acknowledgement: Use of Ordnance Survey map data sanctioned by the controller of H.M. Stationery Office. OS Licence Number 100019326. Crown copyright reserved. Unauthorised production infringes copyright. Contains OS data © Crown copyright and database right 2021. Contains data provided by Cumbria Biodiversity Data Centre; the Lancashire Environment Record Network and Greater Manchester Ecology Unit.

FIGURE 9A.4



Legend

- Compound location
- Compound location - 2km buffer

Accuracy of Data (Refer to Desktop Assessment Report for Species Records Identifier for Desktop Records)

- 1 and 10m
- 100m
- 1000m
- 2000m



0	CW	AN	VG	Initial Issue	18/03/2021
VERSION	AUTH	CHKD	REVD	REASON FOR ISSUE	DATE

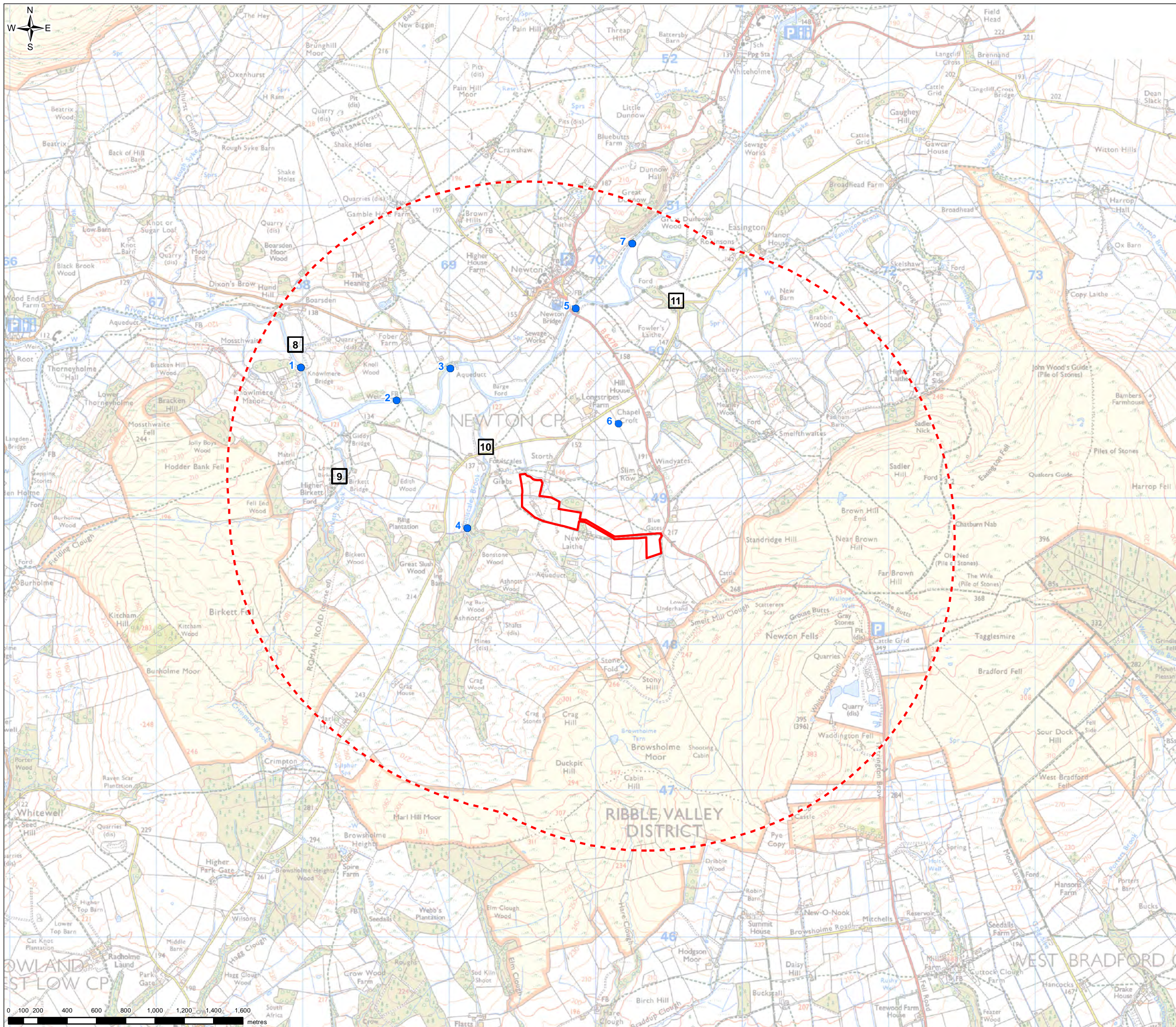


UNITED UTILITIES WATER LIMITED
 HAWESWATER AQUEDUCT RESILIENCE PROGRAMME
 SPECIES DESKTOP RECORDS - PLANT
 MARL HILL SECTION
 PAGE 5 of 11

SCALE 1:25,000	SHEET SIZE A3
DRAWING NUMBER RVCB-MH-FIG-009-01-04	REVISION 0

The copyright of this document, which contains information of a proprietary nature, is vested in United Utilities Water Limited. The content of this document may not be used for purposes other than that for which it has been supplied and may not be reproduced, either wholly or in part, in any way whatsoever. It may not be used by, or its contents divulged to any other person whatsoever without the prior written permission of United Utilities Water Limited. Copyright Acknowledgement: Use of Ordnance Survey map data sanctioned by the controller of H.M. Stationery Office. OS Licence Number 100019326. Crown copyright reserved. Unauthorised production infringes copyright. Contains OS data © Crown copyright and database right 2021. Contains data provided by Cumbria Biodiversity Data Centre, the Lancashire Environment Record Network and Greater Manchester Ecology Unit.

FIGURE 9A.4



Legend

- Compound location
- Compound location - 2km buffer

Accuracy of Data (Refer to Desktop Assessment Report for Species Records Identifier for Desktop Records)

- 1 and 10m
- 100m



0	CW	AN	VG	Initial Issue	18/03/2021
VERSION	AUTH	CHKD	REVD	REASON FOR ISSUE	DATE

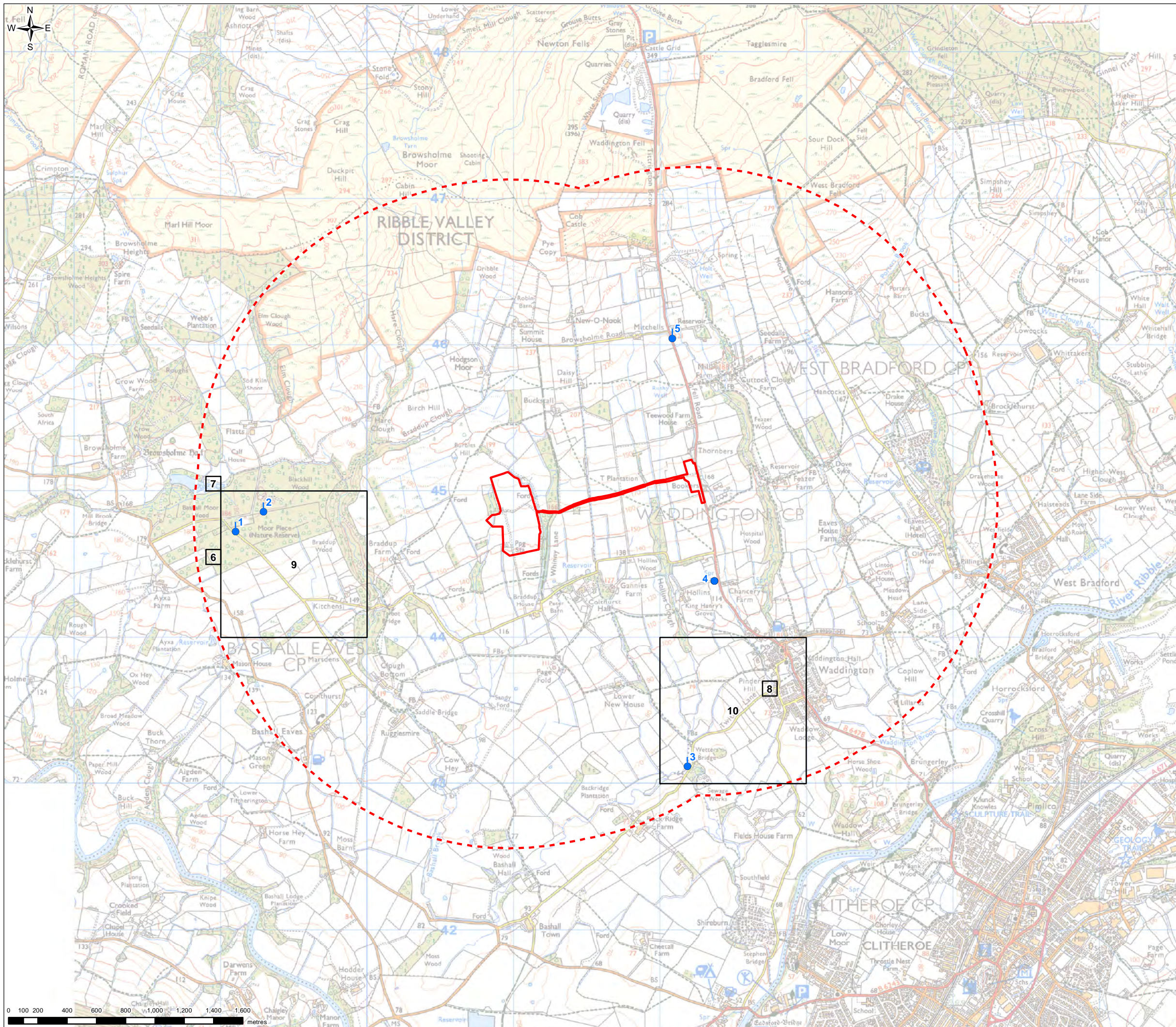


UNITED UTILITIES WATER LIMITED
 HAWESWATER AQUEDUCT RESILIENCE PROGRAMME
 SPECIES DESKTOP RECORDS - REPTILE, AMPHIBIAN AND FISH
 MARL HILL SECTION
 PAGE 6 of 11

SCALE 1:25,000	SHEET SIZE A3
DRAWING NUMBER RVBC-MH-FIG-009-01-04	REVISION 0

The copyright of this document, which contains information of a proprietary nature, is vested in United Utilities Water Limited. The content of this document may not be used for purposes other than that for which it has been supplied and may not be reproduced, either wholly or in part, in any way whatsoever. It may not be used by, or its contents divulged to any other person whatsoever without the prior written permission of United Utilities Water Limited. Copyright Acknowledgement: Use of Ordnance Survey map data sanctioned by the controller of H.M. Stationery Office. OS Licence Number 100019326. Crown copyright reserved. Unauthorised production infringes copyright. Contains OS data © Crown copyright and database right 2021. Contains data provided by Cumbria Biodiversity Data Centre, the Lancashire Environment Record Network and Greater Manchester Ecology Unit.

FIGURE 9A.4

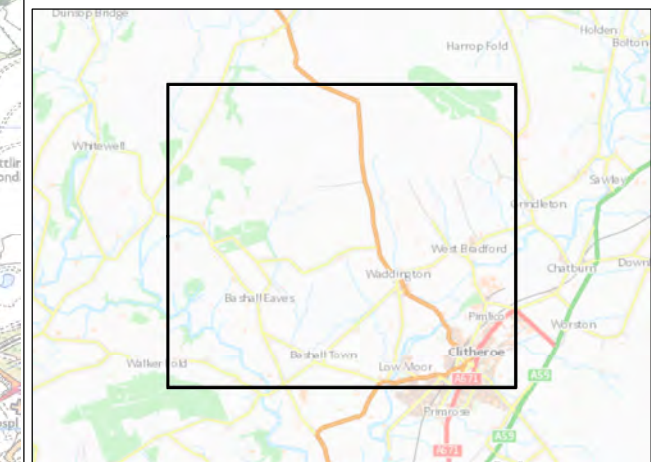


Legend

- Compound location
- Compound location - 2km buffer

Accuracy of Data (Refer to Desktop Assessment Report for Species Records Identifier for Desktop Records)

- 1 and 10m
- 100m
- 1000m



0	CW	AN	VG	Initial Issue	18/03/2021
VERSION	AUTH	CHKD	REVD	REASON FOR ISSUE	DATE

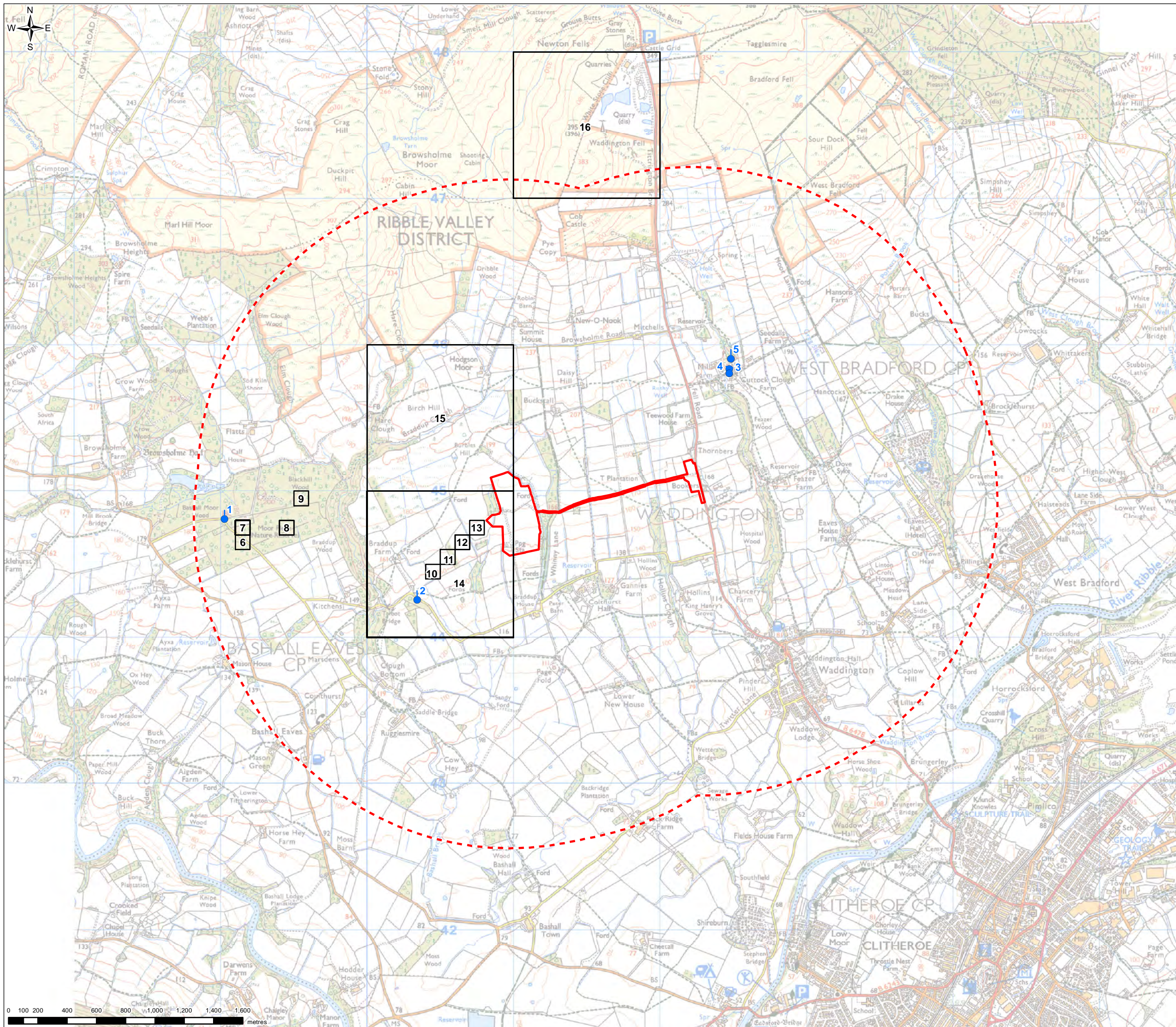


UNITED UTILITIES WATER LIMITED
 HAWESWATER AQUEDUCT RESILIENCE PROGRAMME
 SPECIES DESKTOP RECORDS - BIRD
 MARL HILL SECTION
 PAGE 7 of 11

SCALE 1:25,000	SHEET SIZE A3
DRAWING NUMBER RVCB-MH-FIG-009-01-04	REVISION 0

The copyright of this document, which contains information of a proprietary nature, is vested in United Utilities Water Limited. The content of this document may not be used for purposes other than that for which it has been supplied and may not be reproduced, either wholly or in part, in any way whatsoever. It may not be used by, or its contents divulged to any other person whatsoever without the prior written permission of United Utilities Water Limited. Copyright Acknowledgement: Use of Ordnance Survey map data sanctioned by the controller of H.M. Stationery Office. OS Licence Number 100019326. Crown copyright reserved. Unauthorised production infringes copyright. Contains OS data © Crown copyright and database right 2021. Contains data provided by Cumbria Biodiversity Data Centre; the Lancashire Environment Record Network and Greater Manchester Ecology Unit.

FIGURE 9A.4



Legend


- Compound location
- Compound location - 2km buffer

Accuracy of Data (Refer to Desktop Assessment Report for Species Records Identifier for Desktop Records)

- 1 and 10m
- 100m
- 1000m



0	CW	AN	VG	Initial Issue	18/03/2021
VERSION	AUTH	CHKD	REVD	REASON FOR ISSUE	DATE



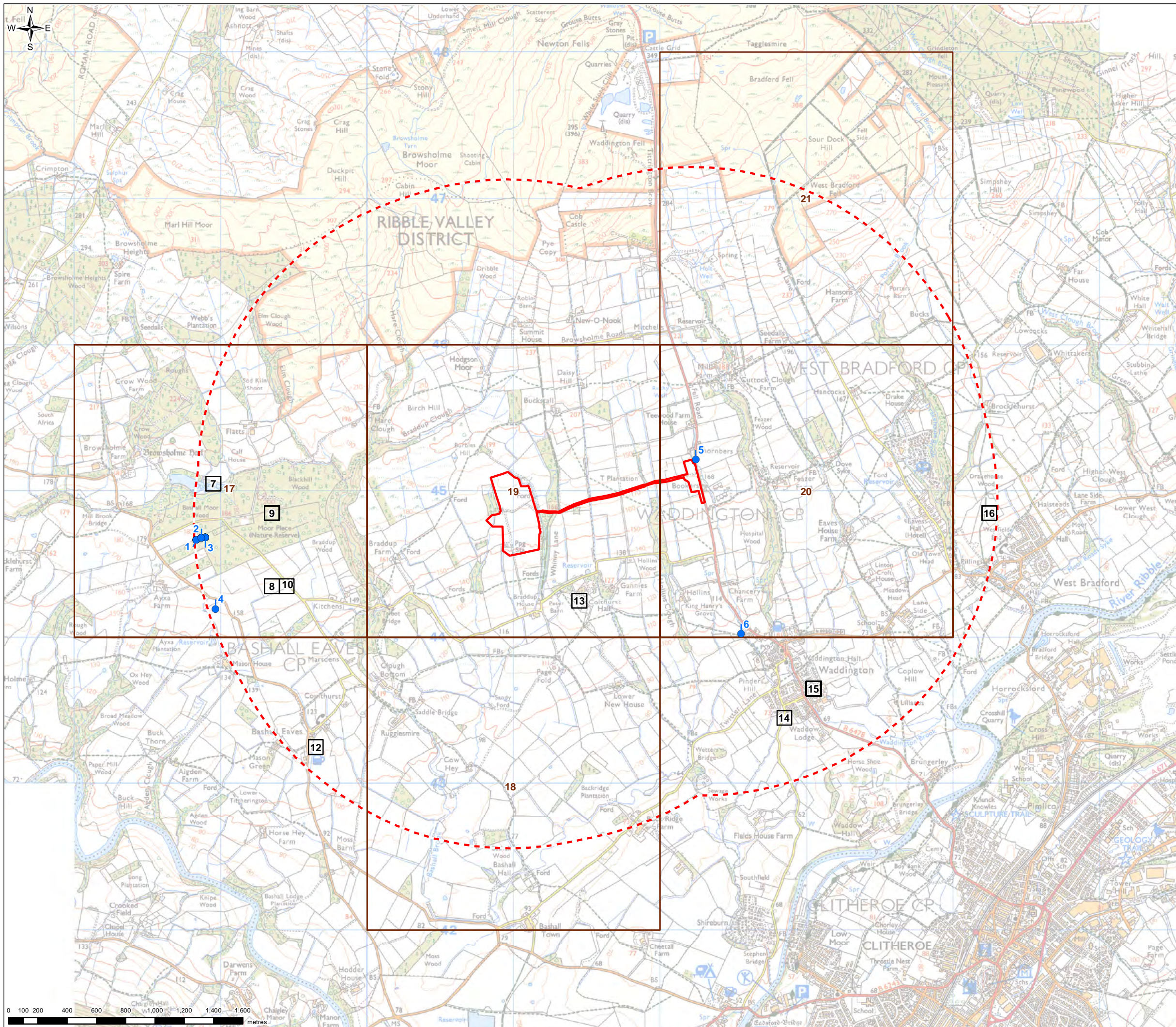
United Utilities
Water for the North West

UNITED UTILITIES WATER LIMITED
HAWESWATER AQUEDUCT RESILIENCE PROGRAMME
SPECIES DESKTOP RECORDS - INSECT
MARL HILL SECTION
PAGE 8 of 11

SCALE 1:25,000	SHEET SIZE A3
DRAWING NUMBER RVCB-MH-FIG-009-01-04	REVISION 0

The copyright of this document, which contains information of a proprietary nature, is vested in United Utilities Water Limited. The content of this document may not be used for purposes other than that for which it has been supplied and may not be reproduced, either wholly or in part, in any way whatsoever. It may not be used by, or its contents divulged to any other person whatsoever without the prior written permission of United Utilities Water Limited. Copyright Acknowledgement: Use of Ordnance Survey map data sanctioned by the controller of H.M. Stationery Office. OS Licence Number 100019326. Crown copyright reserved. Unauthorised production infringes copyright. Contains OS data © Crown copyright and database right 2021. Contains data provided by Cumbria Biodiversity Data Centre; the Lancashire Environment Record Network and Greater Manchester Ecology Unit.

FIGURE 9A.4

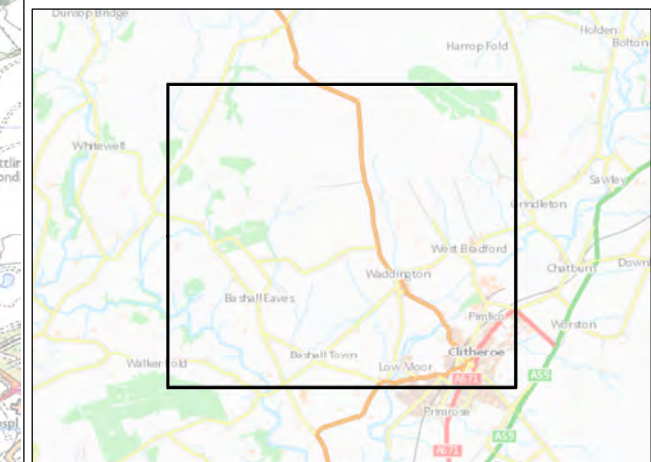


Legend

- Compound location
- Compound location - 2km buffer

Accuracy of Data (Refer to Desktop Assessment Report for Species Records Identifier for Desktop Records)

- 1 and 10m
- 100m
- 2000m



0	CW	AN	VG	Initial Issue	18/03/2021
VERSION	AUTH	CHKD	REVD	REASON FOR ISSUE	DATE

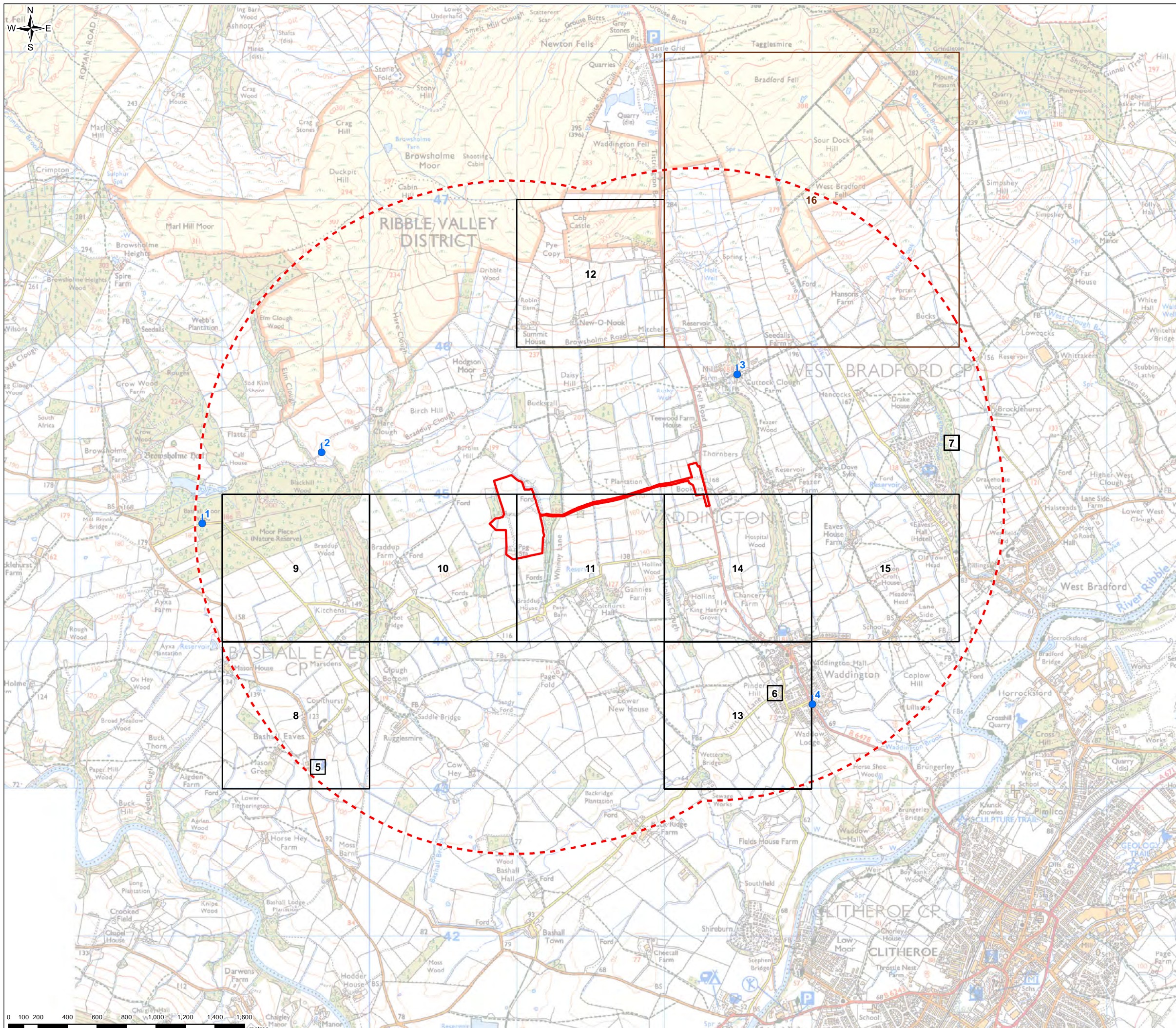


UNITED UTILITIES WATER LIMITED
 HAWESWATER AQUEDUCT RESILIENCE PROGRAMME
 SPECIES DESKTOP RECORDS - MAMMAL
 MARL HILL SECTION
 PAGE 9 of 11

SCALE 1:25,000	SHEET SIZE A3
DRAWING NUMBER RVCB-MH-FIG-009-01-04	REVISION 0

The copyright of this document, which contains information of a proprietary nature, is vested in United Utilities Water Limited. The content of this document may not be used for purposes other than that for which it has been supplied and may not be reproduced, either wholly or in part, in any way whatsoever. It may not be used by, or its contents divulged to any other person whatsoever without the prior written permission of United Utilities Water Limited. Copyright Acknowledgement: Use of Ordnance Survey map data sanctioned by the controller of H.M. Stationery Office. OS Licence Number 100019326. Crown copyright reserved. Unauthorised production infringes copyright. Contains OS data © Crown copyright and database right 2021. Contains data provided by Cumbria Biodiversity Data Centre; the Lancashire Environment Record Network and Greater Manchester Ecology Unit.

FIGURE 9A.4



Legend

- Compound location
- Compound location - 2km buffer

Accuracy of Data (Refer to Desktop Assessment Report for Species Records Identifier for Desktop Records)

- 1 and 10m
- 100m
- 1000m
- 2000m



0	CW	AN	VG	Initial Issue	18/03/2021
VERSION	AUTH	CHKD	REVD	REASON FOR ISSUE	DATE

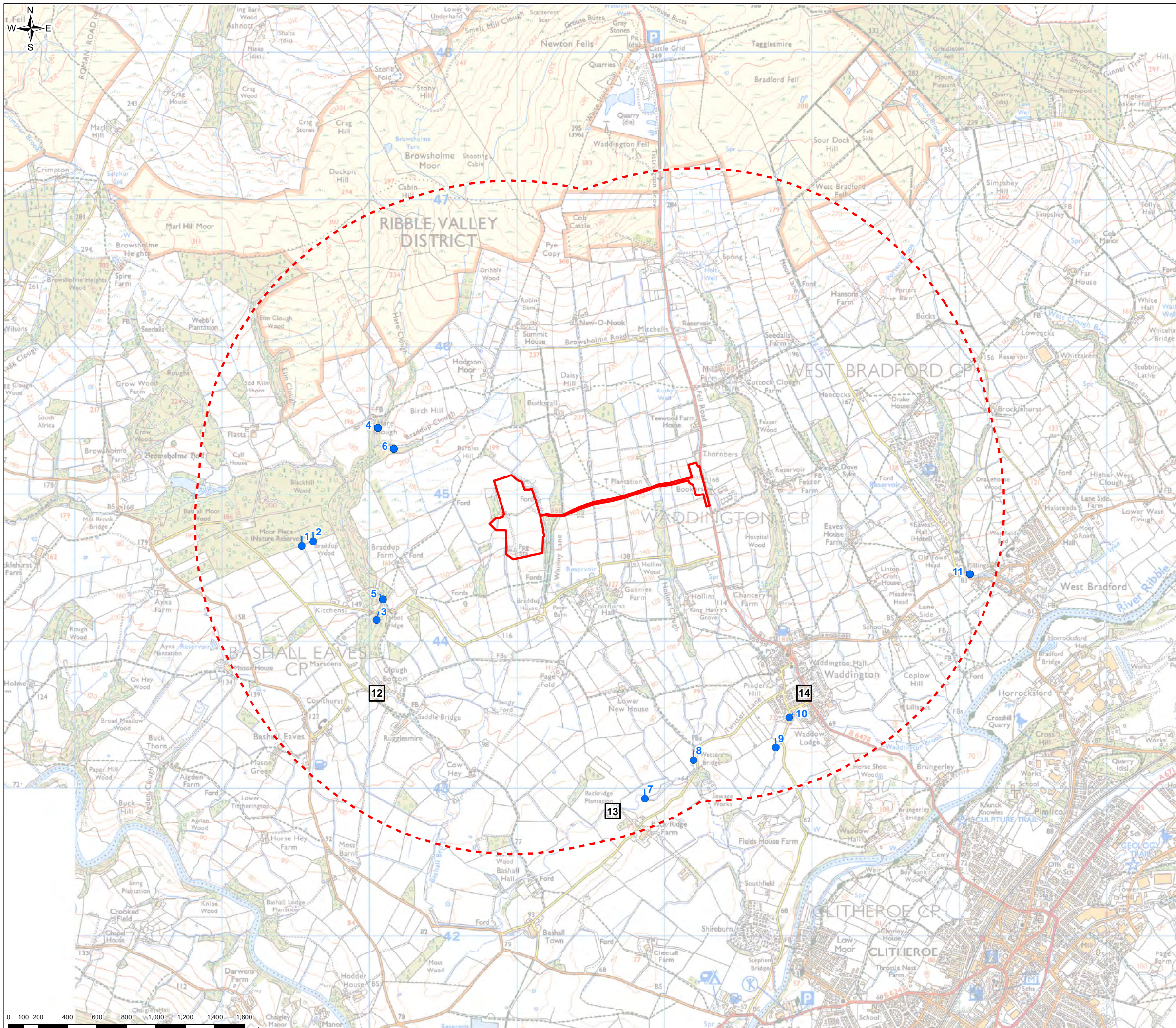


UNITED UTILITIES WATER LIMITED
 HAWESWATER AQUEDUCT RESILIENCE PROGRAMME
 SPECIES DESKTOP RECORDS - PLANT
 MARL HILL SECTION
 PAGE 10 of 11

SCALE 1:25,000	SHEET SIZE A3
DRAWING NUMBER RVCB-MH-FIG-009-01-04	REVISION 0

The copyright of this document, which contains information of a proprietary nature, is vested in United Utilities Water Limited. The content of this document may not be used for purposes other than that for which it has been supplied and may not be reproduced, either wholly or in part, in any way whatsoever. It may not be used by, or its contents divulged to any other person whatsoever without the prior written permission of United Utilities Water Limited. Copyright Acknowledgement: Use of Ordnance Survey map data sanctioned by the controller of H.M. Stationery Office. OS Licence Number 100019326. Crown copyright reserved. Unauthorised production infringes copyright. Contains OS data © Crown copyright and database right 2021. Contains data provided by Cumbria Biodiversity Data Centre; the Lancashire Environment Record Network and Greater Manchester Ecology Unit.

FIGURE 9A.4

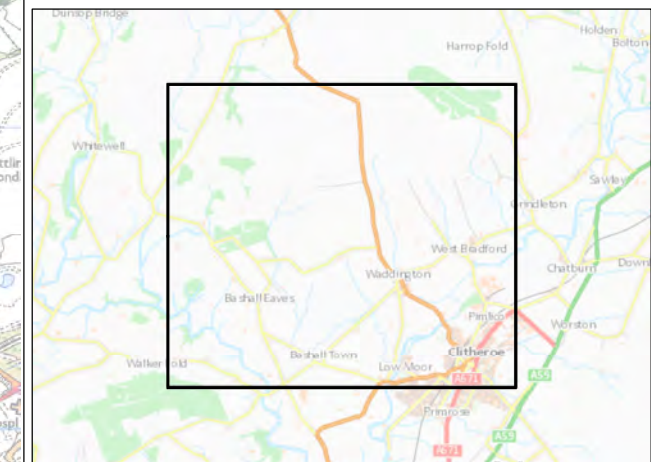


Legend

- Compound location
- Compound location - 2km buffer

Accuracy of Data (Refer to Desktop Assessment Report for Species Records Identifier for Desktop Records)

- 1 and 10m
- 100m



0	CW	AN	VG	Initial Issue	18/03/2021
VERSION	AUTH	CHKD	REVD	REASON FOR ISSUE	DATE



UNITED UTILITIES WATER LIMITED
 HAWESWATER AQUEDUCT RESILIENCE PROGRAMME
 SPECIES DESKTOP RECORDS - REPTILE, AMPHIBIAN AND FISH
 MARL HILL SECTION
 PAGE 11 of 11

SCALE 1:25,000	SHEET SIZE A3
DRAWING NUMBER RVCB-MH-FIG-009-01-04	REVISION 0

The copyright of this document, which contains information of a proprietary nature, is vested in United Utilities Water Limited. The content of this document may not be used for purposes other than that for which it has been supplied and may not be reproduced, either wholly or in part, in any way whatsoever. It may not be used by, or its contents divulged to any other person whatsoever without the prior written permission of United Utilities Water Limited. Copyright Acknowledgement: Use of Ordnance Survey map data sanctioned by the controller of H.M. Stationery Office. OS Licence Number 100019326. Crown copyright reserved. Unauthorised production infringes copyright. Contains OS data © Crown copyright and database right 2021. Contains data provided by Cumbria Biodiversity Data Centre; the Lancashire Environment Record Network and Greater Manchester Ecology Unit.