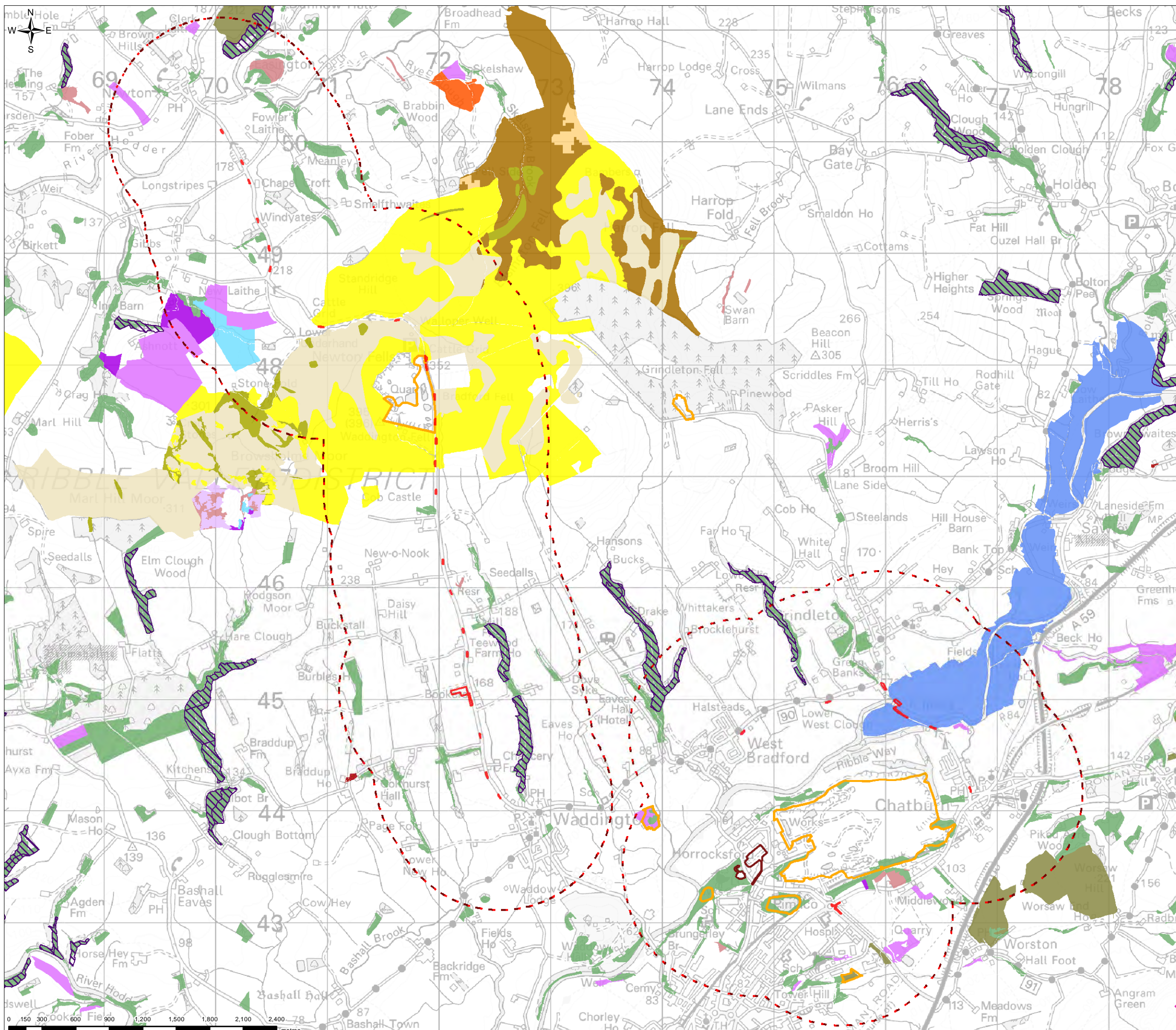
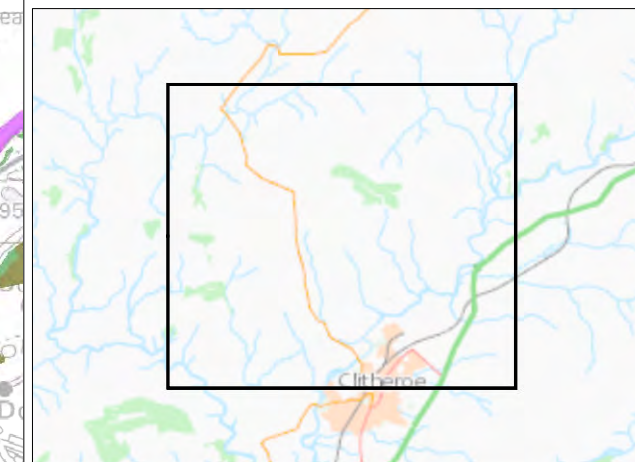


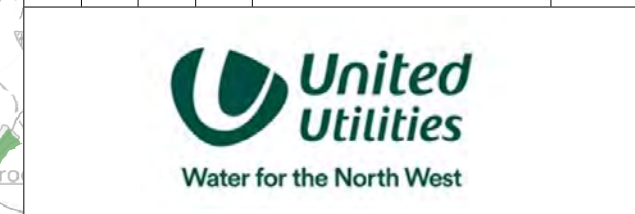
FIGURE 3



- Legend**
- Highways improvement works
 - Proposed works at Clitheroe
 - Highways improvement works and proposed works at Clitheroe - 5km buffer
- Priority Habitat**
- Blanket bog
 - Coastal and floodplain grazing marsh
 - Deciduous woodland
 - Fragmented heath
 - Good quality semi-improved grassland
 - Grass moorland
 - Lowland calcareous grassland
 - Lowland dry acid grassland
 - Lowland fens
 - Lowland heathland
 - Purple moor grass and rush pastures
 - Traditional orchard
 - Upland calcareous grassland
 - Upland flushes, fens and swamps
 - Upland hay meadow
 - Upland heathland
- Other Notable Habitats**
- Ancient Woodland
 - Open mosaic habitats on previously developed land



MK	MK	CW	KG	Initial Issue	16/06/2021
VERSION	AUTH	CHRD	REVD	REASON FOR ISSUE	DATE



PROJECT UNITED UTILITIES WATER LIMITED
 HAWESWATER AQUEDUCT RESILIENCE PROGRAMME
 OFF-SITE HIGHWAYS WORKS TR4 VOLUME 5 PART II
 PRIORITY HABITATS AND ANCIENT WOODLAND WITHIN 1KM

SCALE 1:33,000	SHEET SIZE A3
DRAWING NUMBER RVBC-MH-FIG-V5-P2-03	REVISION 0

The copyright of this document, which contains information of a proprietary nature, is vested in United Utilities Water Limited. The content of this document may not be used for purposes other than that for which it has been supplied and may not be reproduced, either wholly or in part, in any way whatsoever. It may not be used by, or its contents divulged to any other person whatsoever without the prior written permission of United Utilities Water Limited. Copyright Acknowledgement: Use of Ordnance Survey map data sanctioned by the controller of H.M. Stationery Office. OS Licence Number 100019326 and 0100031673. Crown copyright reserved. Unauthorised production infringes copyright. Natural England Data - contains public sector information licensed under the Open Government Licence v3.0. Contains OS data © Crown copyright and database right 2021.