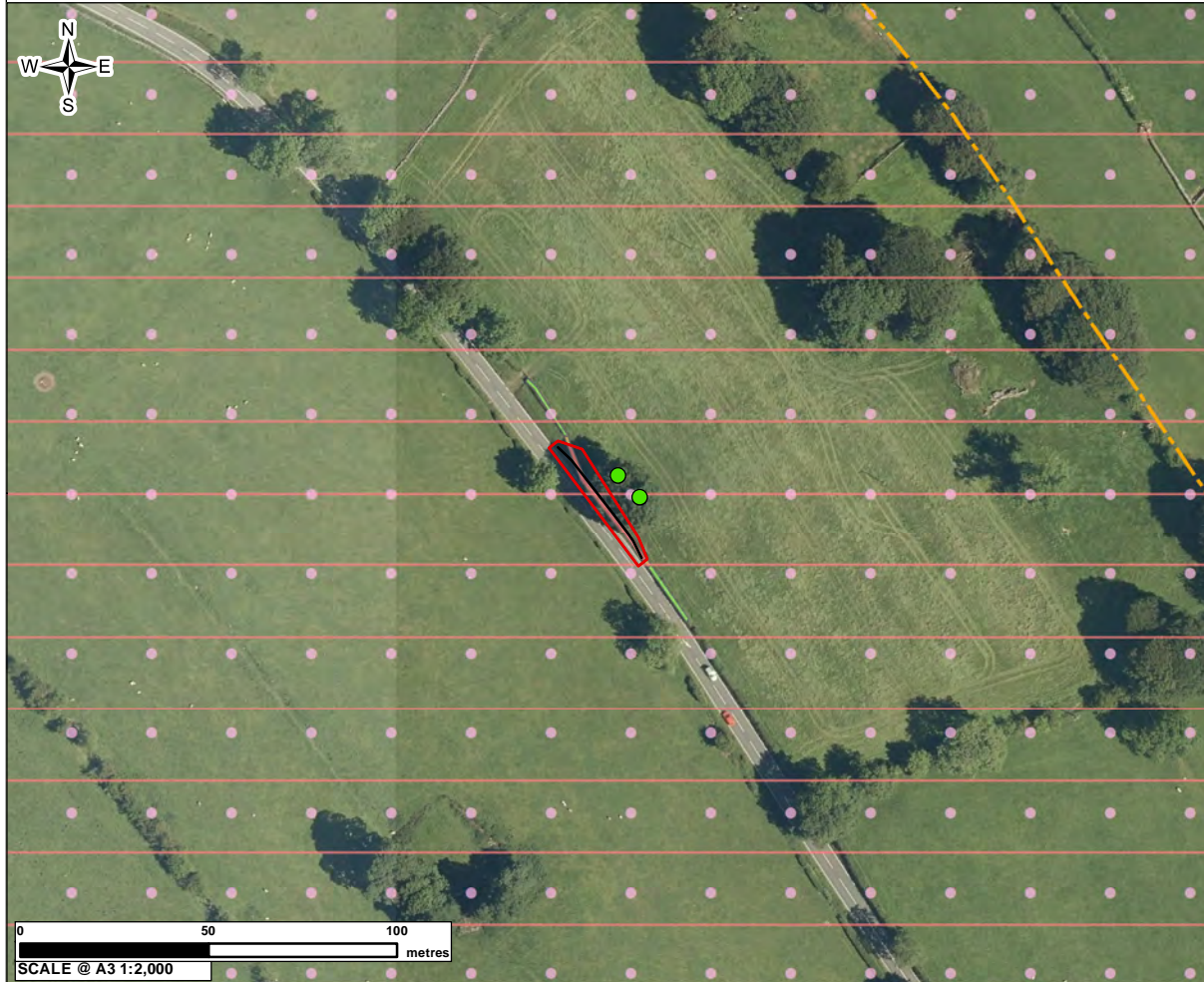
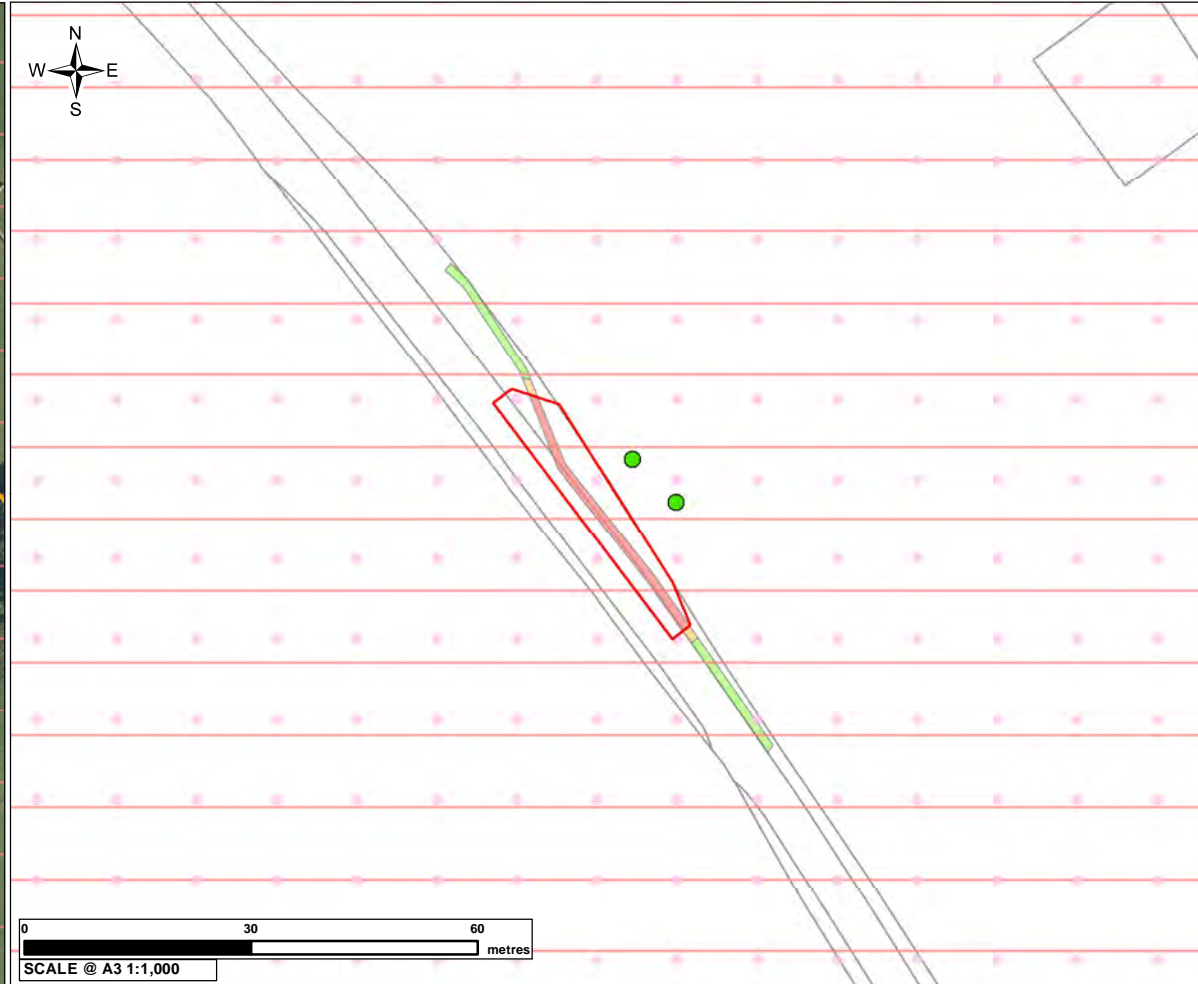


CONTEXT PLAN



SCALE @ A3 1:2,000

HIGHWAYS WORKS AND ENVIRONMENTAL CONSTRAINTS



SCALE @ A3 1:1,000

MARL HILL AND NEWTON-IN-BOWLAND COMPOUNDS HIGHWAYS WORKS

1. The findings of the off-site highways works environmental topic appraisals are only reported on the individual pages of this set of figures for those topics where likely significant effects are considered likely to occur. As such, no text is included on the individual pages of this set of figures for those topics where likely significant effects are not anticipated.
2. Given the geographically broad nature of anticipated effects on arboricultural resources illustrated on this set of figures, no narrative text has been included in the reporting on the figures for this topic. Effects on arboriculture are instead reported in Volume 5, Off-Site Highways Works, Part 1: Environmental Assessment (excluding Ecology) report of the Proposed Swarther Section ES.
3. Anticipated effects on wider community areas are not reported on this set of figures, but are instead considered in the Volume 5, Off-Site Highways Works, Part 1 report.
4. Given the geographically broad nature of anticipated effects on transport planning, this topic is not addressed on this set of figures, but is instead reported in the Volume 5, Off-Site Highways Works, Part 1 report.
5. The findings of the terrestrial and aquatic ecological assessment are not addressed on this set of figures, and are instead reported separately in Volume 5, Off-Site Highways Works, Part 2: Environmental Assessment - Terrestrial and Aquatic Ecology report of the Proposed Swarther Section ES.
6. For further detail of the planning application boundary refer to Series 12 of the Planning Application Drawings.

Legend

Highways Works

Planning Application Boundary

Road Widening (RW)

Environmental Constraints

Footpath

Bowland Fells National Character Area

Area of Outstanding Natural Beauty

Arboriculture Tree Point - RAG Impacts

Individual tree to be retained with protection measures

Arboriculture Tree Group Canopies - RAG Impacts

Tree Group/Woodland/Hedgerow Feature to be Removed

Tree Group/Woodland/Hedgerow Feature at Risk of Removal but Aiming to Retain

Tree Group/Woodland/Hedgerow Feature to be Retained with Protection Measures

HIGHWAYS WORKS LOCATION: RW28

Baseline

This reporting sheet shows baseline environmental features, designations and assets which have been considered in the environmental assessment process. Accounting for the topic reporting exclusions described in the 'Notes' section of this sheet (which are instead reported in the Volume 5, Off-Site Highways Works, Part 1 and Part 2 reports), none of these features, when screened against the predicted impacts associated with the proposed off-site highways works using the same methodology described in Volume 2, is anticipated to give rise to likely significant effects.

Likely Significant Effects - Pre-mitigation

No likely significant effects.

Mitigation / Reinstatement

No mitigation required.



01	KB	LT	SH	PLANNING SUBMISSION	6/18/2021
VERSION	AUTH	CHKD	REVD	REASON FOR ISSUE	DATE



UNITED UTILITIES WATER LIMITED
HAWESWATER AQUEDUCT RESILIENCE PROGRAMME
MARL HILL AND NEWTON HIGHWAYS WORKS -
ENVIRONMENTAL ASSESSMENT FIGURES
PAGE 1 OF 33

DRAWING NUMBER	SHEET SIZE
RVBC-MH-FIG-V5-P1-002	A3
	REVISION
	01

CONTEXT PLAN



0 50 100 metres
SCALE @ A3 1:2,000

HIGHWAYS WORKS AND ENVIRONMENTAL CONSTRAINTS



0 30 60 metres
SCALE @ A3 1:1,000

MARL HILL AND NEWTON-IN-BOWLAND COMPOUNDS HIGHWAYS WORKS

1. The findings of the off-site highways works environmental topic appraisals are only reported on the individual pages of this set of figures for those topics where likely significant effects are considered likely to occur. As such, no text is included on the individual pages of this set of figures for those topics where likely significant effects are not anticipated.
2. Given the geographically broad nature of anticipated effects on arboricultural resources illustrated on this set of figures, no narrative text has been included in the reporting on the figures for this topic. Effects on arboriculture are instead reported in Volume 5, Off-Site Highways Works, Part 1: Environmental Assessment (excluding Ecology) report of the Proposed Swarther Section ES.
3. Anticipated effects on wider community areas are not reported on this set of figures, but are instead considered in the Volume 5, Off-Site Highways Works, Part 1 report.
4. Given the geographically broad nature of anticipated effects on transport planning, this topic is not addressed on this set of figures, but is instead reported in the Volume 5, Off-Site Highways Works, Part 1 report.
5. The findings of the terrestrial and aquatic ecological assessment are not addressed on this set of figures, and are instead reported separately in Volume 5, Off-Site Highways Works, Part 2: Environmental Assessment - Terrestrial and Aquatic Ecology report of the Proposed Swarther Section ES.
6. For further detail of the planning application boundary refer to Series 12 of the Planning Application Drawings.

Legend

Highways Works

- Planning Application Boundary
- Road Widening (RW)

Environmental Constraints

- Bowland Fells National Character Area
- Area of Outstanding Natural Beauty
- Arboriculture Tree Group Canopies - RAG Impacts
- Tree Group/Woodland/Hedgerow Feature to be Retained with Protection Measures

HIGHWAYS WORKS LOCATION: RW27

Baseline

Noise and Vibration

Farm

Likely Significant Effects - Pre-mitigation

Noise and Vibration

Likely significant effect from noise and vibration on the residents of a farm 40m from the highway improvement works, during construction.

Mitigation / Reinstatement

Noise and Vibration

Implementation of CCoP for control of disruption during construction noise. In addition the screening of particularly noisy activities will be considered.



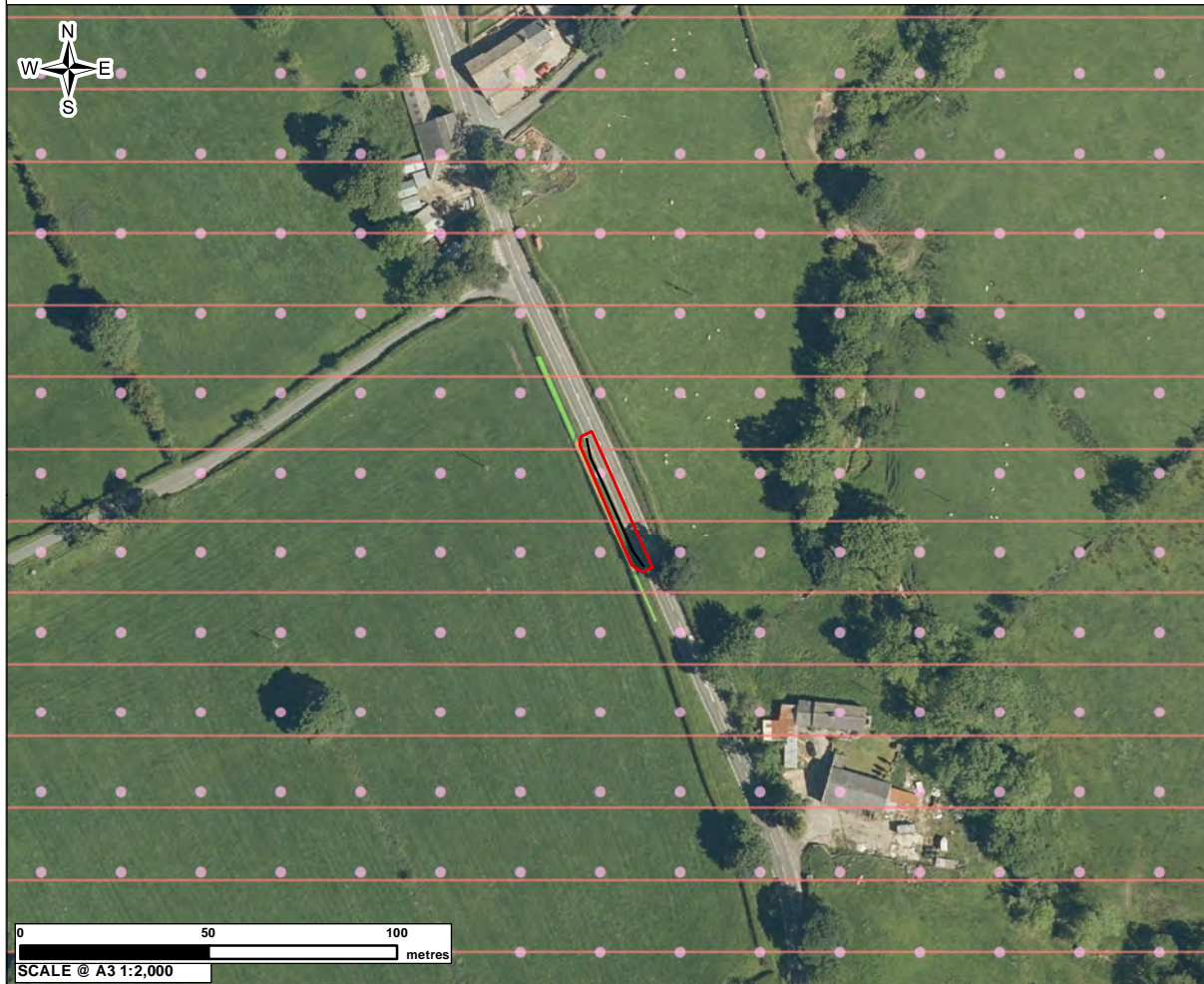
01	KB	LT	SH	PLANNING SUBMISSION	6/18/2021
VERSION	AUTH	CHKD	REVD	REASON FOR ISSUE	DATE



UNITED UTILITIES WATER LIMITED
HAWESWATER AQUEDUCT RESILIENCE PROGRAMME
MARL HILL AND NEWTON HIGHWAYS WORKS -
ENVIRONMENTAL ASSESSMENT FIGURES
PAGE 2 OF 33

DRAWING NUMBER	SHEET SIZE
RVBC-MH-FIG-V5-P1-002	A3
	REVISION
	01

CONTEXT PLAN



SCALE @ A3 1:2,000

HIGHWAYS WORKS AND ENVIRONMENTAL CONSTRAINTS



SCALE @ A3 1:1,000

MARL HILL AND NEWTON-IN-BOWLAND COMPOUNDS HIGHWAYS WORKS

1. The findings of the off-site highways works environmental topic appraisals are only reported on the individual pages of this set of figures for those topics where likely significant effects are considered likely to occur. As such, no text is included on the individual pages of this set of figures for those topics where likely significant effects are not anticipated.
2. Given the geographically broad nature of anticipated effects on arboricultural resources illustrated on this set of figures, no narrative text has been included in the reporting on the figures for this topic. Effects on arboriculture are instead reported in Volume 5, Off-Site Highways Works, Part 1: Environmental Assessment (excluding Ecology) report of the Proposed Swarther Section ES.
3. Anticipated effects on wider community areas are not reported on this set of figures, but are instead considered in the Volume 5, Off-Site Highways Works, Part 1 report.
4. Given the geographically broad nature of anticipated effects on transport planning, this topic is not addressed on this set of figures, but is instead reported in the Volume 5, Off-Site Highways Works, Part 1 report.
5. The findings of the terrestrial and aquatic ecological assessment are not addressed on this set of figures, and are instead reported separately in Volume 5, Off-Site Highways Works, Part 2: Environmental Assessment - Terrestrial and Aquatic Ecology report of the Proposed Swarther Section ES.
6. For further detail of the planning application boundary refer to Series 12 of the Planning Application Drawings.

Legend

Highways Works

Planning Application Boundary

Road Widening (RW)

Environmental Constraints

Bowland Fells National Character Area

Area of Outstanding Natural Beauty

Arboriculture Tree Group Canopies - RAG Impacts

Tree Group/Woodland/Hedgerow Feature to be Removed

Tree Group/Woodland/Hedgerow Feature at Risk of Removal but Aiming to Retain

Tree Group/Woodland/Hedgerow Feature to be Retained with Protection Measures

HIGHWAYS WORKS LOCATION: RW26

Baseline

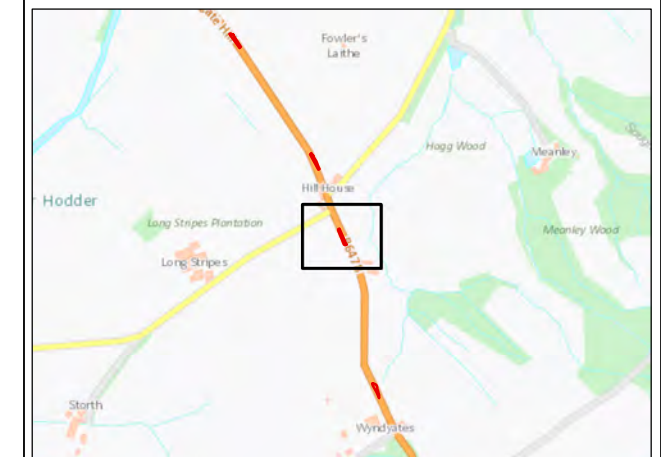
This reporting sheet shows baseline environmental features, designations and assets which have been considered in the environmental assessment process. Accounting for the topic reporting exclusions described in the 'Notes' section of this sheet (which are instead reported in the Volume 5, Off-Site Highways Works, Part 1 and Part 2 reports), none of these features, when screened against the predicted impacts associated with the proposed off-site highways works using the same methodology described in Volume 2, is anticipated to give rise to likely significant effects.

Likely Significant Effects - Pre-mitigation

No likely significant effects.

Mitigation / Reinstatement

No mitigation required.



01	KB	LT	SH	PLANNING SUBMISSION	6/18/2021
VERSION	AUTH	CHKD	REVD	REASON FOR ISSUE	DATE



UNITED UTILITIES WATER LIMITED
HAWESWATER AQUEDUCT RESILIENCE PROGRAMME
MARL HILL AND NEWTON HIGHWAYS WORKS -
ENVIRONMENTAL ASSESSMENT FIGURES
PAGE 3 OF 33

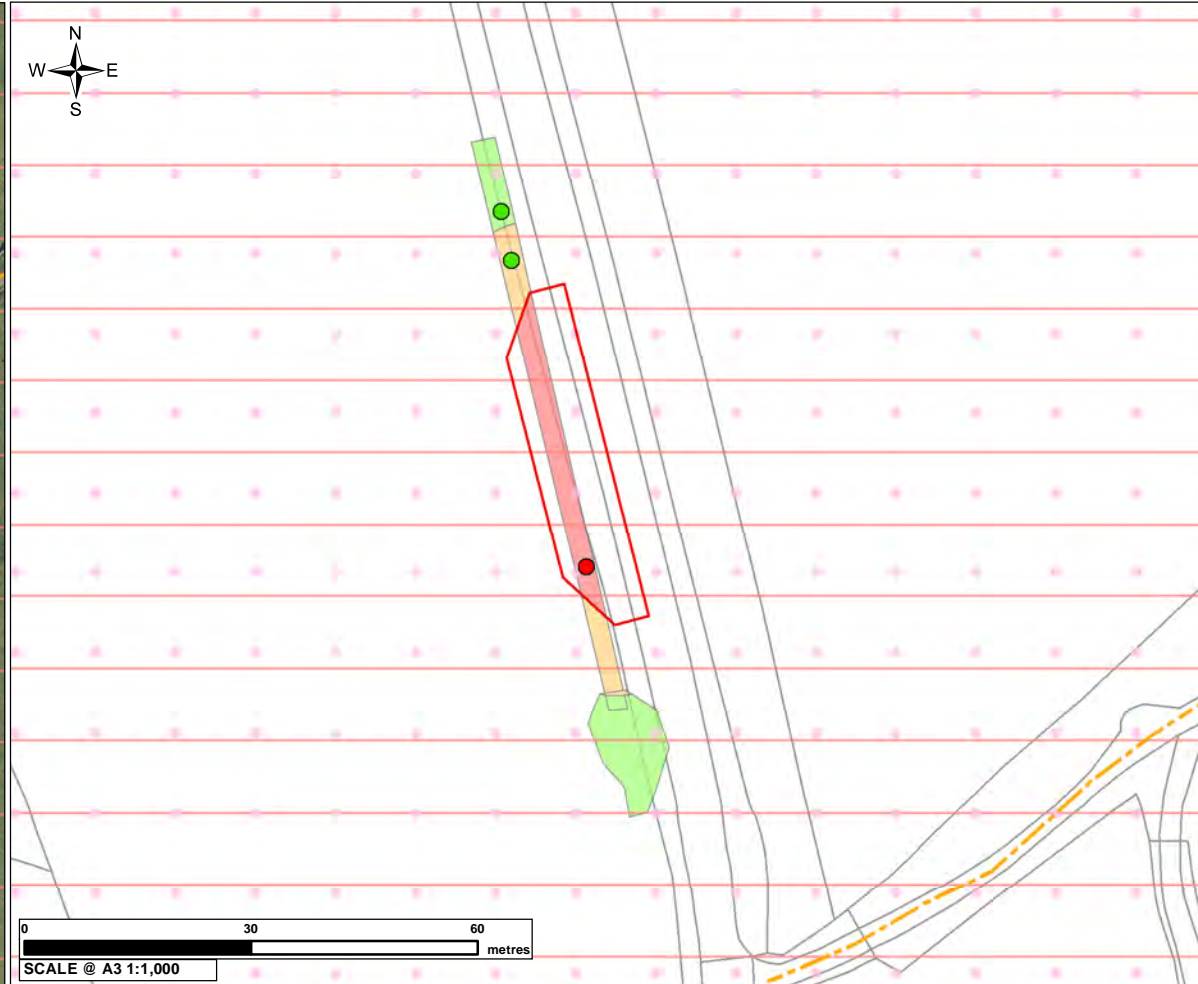
DRAWING NUMBER	SHEET SIZE
RVBC-MH-FIG-V5-P1-002	A3
	REVISION
	01

CONTEXT PLAN



SCALE @ A3 1:2,000

HIGHWAYS WORKS AND ENVIRONMENTAL CONSTRAINTS



SCALE @ A3 1:1,000

MARL HILL AND NEWTON-IN-BOWLAND COMPOUNDS HIGHWAYS WORKS

1. The findings of the off-site highways works environmental topic appraisals are only reported on the individual pages of this set of figures for those topics where likely significant effects are considered likely to occur. As such, no text is included on the individual pages of this set of figures for those topics where likely significant effects are not anticipated.
2. Given the geographically broad nature of anticipated effects on arboricultural resources illustrated on this set of figures, no narrative text has been included in the reporting on the figures for this topic. Effects on arboriculture are instead reported in Volume 5, Off-Site Highways Works, Part 1: Environmental Assessment (excluding Ecology) report of the Proposed Swarther Section ES.
3. Anticipated effects on wider community areas are not reported on this set of figures, but are instead considered in the Volume 5, Off-Site Highways Works, Part 1 report.
4. Given the geographically broad nature of anticipated effects on transport planning, this topic is not addressed on this set of figures, but is instead reported in the Volume 5, Off-Site Highways Works, Part 1 report.
5. The findings of the terrestrial and aquatic ecological assessment are not addressed on this set of figures, and are instead reported separately in Volume 5, Off-Site Highways Works, Part 2: Environmental Assessment - Terrestrial and Aquatic Ecology report of the Proposed Swarther Section ES.
6. For further detail of the planning application boundary refer to Series 12 of the Planning Application Drawings.

Legend

Highways Works

- Planning Application Boundary
- Road Widening (RW)
- Passing Place (PP)

Environmental Constraints

- Footpath
- Bowland Fells National Character Area
- Area of Outstanding Natural Beauty

Arboriculture Tree Point - RAG Impacts

- Individual tree to be removed
- Individual tree to be retained with protection measures

Arboriculture Tree Group Canopies - RAG Impacts

- Tree Group/Woodland/Hedgerow Feature to be Removed
- Tree Group/Woodland/Hedgerow Feature at Risk of Removal but Aiming to Retain
- Tree Group/Woodland/Hedgerow Feature to be Retained with Protection Measures

HIGHWAYS WORKS LOCATION: RW25

Baseline

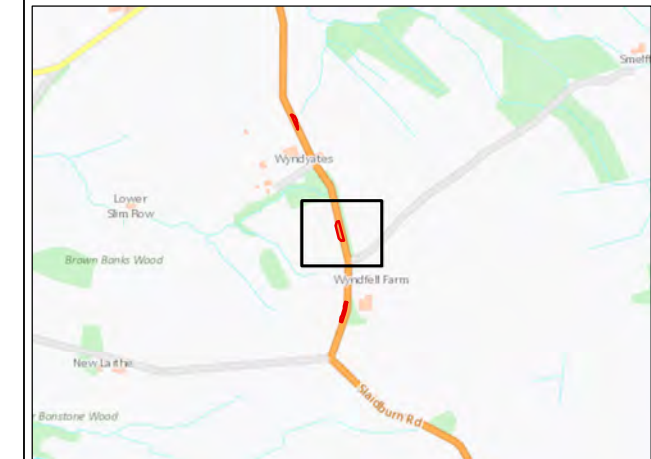
This reporting sheet shows baseline environmental features, designations and assets which have been considered in the environmental assessment process. Accounting for the topic reporting exclusions described in the 'Notes' section of this sheet (which are instead reported in the Volume 5, Off-Site Highways Works, Part 1 and Part 2 reports), none of these features, when screened against the predicted impacts associated with the proposed off-site highways works using the same methodology described in Volume 2, is anticipated to give rise to likely significant effects.

Likely Significant Effects - Pre-mitigation

No likely significant effects.

Mitigation / Reinstatement

No mitigation required.



01	KB	LT	SH	PLANNING SUBMISSION	6/18/2021
VERSION	AUTH	CHKD	REVD	REASON FOR ISSUE	DATE



UNITED UTILITIES WATER LIMITED
 HAWESWATER AQUEDUCT RESILIENCE PROGRAMME
 MARL HILL AND NEWTON HIGHWAYS WORKS -
 ENVIRONMENTAL ASSESSMENT FIGURES
 PAGE 5 OF 33

DRAWING NUMBER	SHEET SIZE
RVBC-MH-FIG-V5-P1-002	A3
	REVISION
	01

CONTEXT PLAN



HIGHWAYS WORKS AND ENVIRONMENTAL CONSTRAINTS



MARL HILL AND NEWTON-IN-BOWLAND COMPOUNDS HIGHWAYS WORKS

1. The findings of the off-site highways works environmental topic appraisals are only reported on the individual pages of this set of figures for those topics where likely significant effects are considered likely to occur. As such, no text is included on the individual pages of this set of figures for those topics where likely significant effects are not anticipated.
2. Given the geographically broad nature of anticipated effects on arboricultural resources illustrated on this set of figures, no narrative text has been included in the reporting on the figures for this topic. Effects on arboriculture are instead reported in Volume 5, Off-Site Highways Works, Part 1: Environmental Assessment (excluding Ecology) report of the Proposed Swarther Section ES.
3. Anticipated effects on wider community areas are not reported on this set of figures, but are instead considered in the Volume 5, Off-Site Highways Works, Part 1 report.
4. Given the geographically broad nature of anticipated effects on transport planning, this topic is not addressed on this set of figures, but is instead reported in the Volume 5, Off-Site Highways Works, Part 1 report.
5. The findings of the terrestrial and aquatic ecological assessment are not addressed on this set of figures, and are instead reported separately in Volume 5, Off-Site Highways Works, Part 2: Environmental Assessment - Terrestrial and Aquatic Ecology report of the Proposed Swarther Section ES.
6. For further detail of the planning application boundary refer to Series 12 of the Planning Application Drawings.

Legend

- Highways Works**
- Planning Application Boundary
 - Road Widening (RW)
 - Passing Place (PP)
- Environmental Constraints**
- Footpath
 - Bowland Fells National Character Area
 - Area of Outstanding Natural Beauty
- Arboriculture Tree Group Canopies - RAG Impacts**
- Tree Group/Woodland/Hedgerow Feature to be Removed
 - Tree Group/Woodland/Hedgerow Feature at Risk of Removal but Aiming to Retain
 - Tree Group/Woodland/Hedgerow Feature to be Retained with Protection Measures

HIGHWAYS WORKS LOCATION: RW24

Baseline

This reporting sheet shows baseline environmental features, designations and assets which have been considered in the environmental assessment process. Accounting for the topic reporting exclusions described in the 'Notes' section of this sheet (which are instead reported in the Volume 5, Off-Site Highways Works, Part 1 and Part 2 reports), none of these features, when screened against the predicted impacts associated with the proposed off-site highways works using the same methodology described in Volume 2, is anticipated to give rise to likely significant effects.

Likely Significant Effects - Pre-mitigation

No likely significant effects.

Mitigation / Reinstatement

No mitigation required.



01	KB	LT	SH	PLANNING SUBMISSION	6/18/2021
VERSION	AUTH	CHKD	REVD	REASON FOR ISSUE	DATE



UNITED UTILITIES WATER LIMITED
 HAWESWATER AQUEDUCT RESILIENCE PROGRAMME
 MARL HILL AND NEWTON HIGHWAYS WORKS -
 ENVIRONMENTAL ASSESSMENT FIGURES
 PAGE 6 OF 33

DRAWING NUMBER	RVBC-MH-FIG-V5-P1-002	SHEET SIZE	A3
		REVISION	01

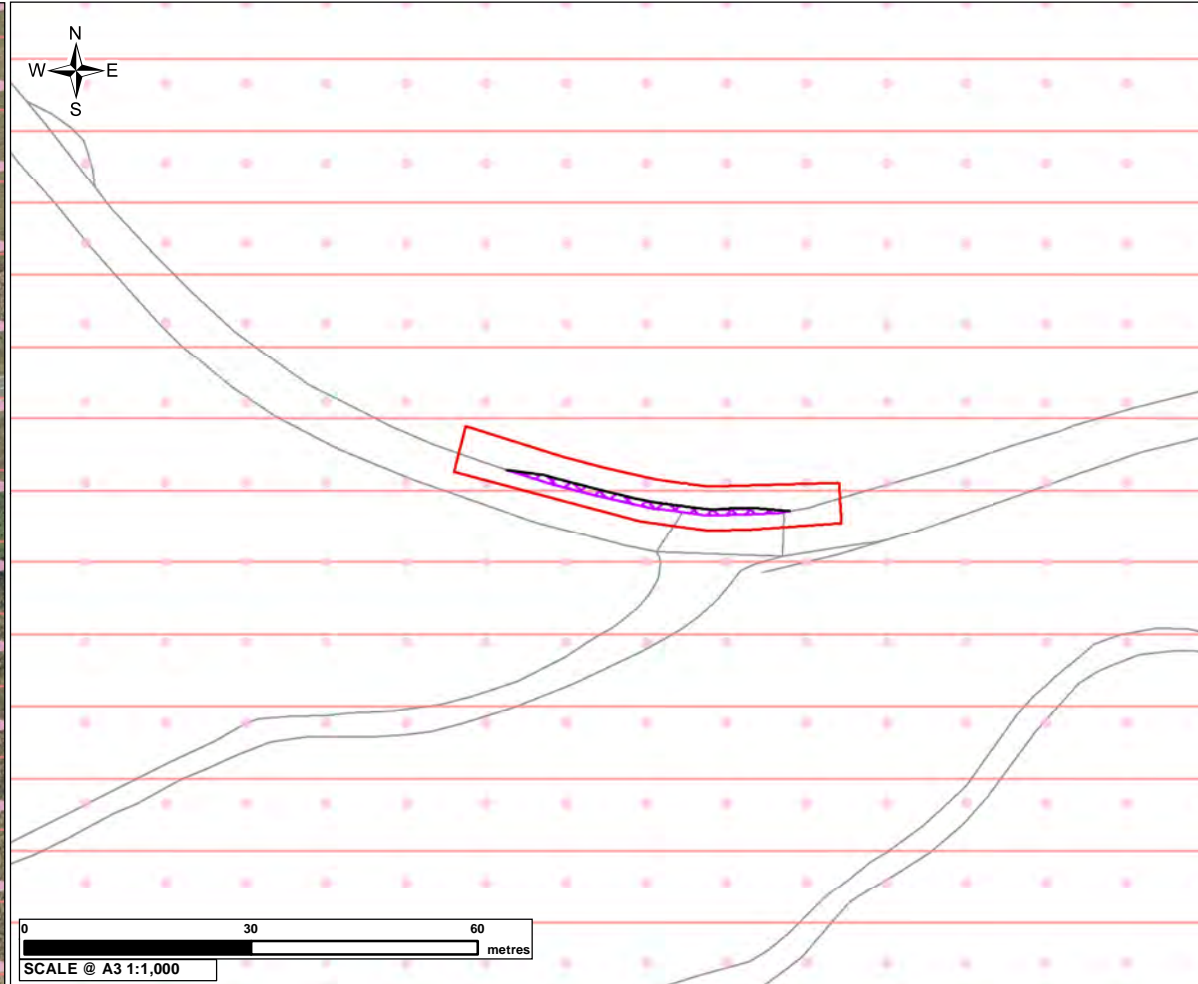
The copyright of this document, which contains information of a proprietary nature, is vested in United Utilities Water Limited. The content of this document may not be used for purposes other than that for which it has been supplied and may not be reproduced, either wholly or in part, in any way whatsoever. It may not be used by, or its contents divulged to any other person whatsoever without the prior written permission of United Utilities Water Limited. Copyright Acknowledgement: Use of Ordnance Survey map data sanctioned by the controller of H.M. Stationery Office, OS Licence Number 100019326. Crown copyright reserved. Unauthorised production infringes copyright. © Crown copyright and database rights 2020 Ordnance Survey 0100031673. © Historic England 2020. Contains Ordnance Survey data © Crown copyright and database right 2020. The Historic England GIS Data contained in this material was obtained on 07/08/2020. The most publicly available up to date Historic England GIS Data can be obtained from HistoricEngland.org.uk © Natural England copyright. Contains Ordnance Survey data © Crown copyright and database right 2020. Contains OS data © Crown Copyright and database right 2020. Esri, HERE, Garmin, (c) OpenStreetMap contributors, and the GIS user community.

CONTEXT PLAN



SCALE @ A3 1:2,000

HIGHWAYS WORKS AND ENVIRONMENTAL CONSTRAINTS



SCALE @ A3 1:1,000

MARL HILL AND NEWTON-IN-BOWLAND COMPOUNDS HIGHWAYS WORKS

1. The findings of the off-site highways works environmental topic appraisals are only reported on the individual pages of this set of figures for those topics where likely significant effects are considered likely to occur. As such, no text is included on the individual pages of this set of figures for those topics where likely significant effects are not anticipated.
2. Given the geographically broad nature of anticipated effects on arboricultural resources illustrated on this set of figures, no narrative text has been included in the reporting on the figures for this topic. Effects on arboriculture are instead reported in Volume 5, Off-Site Highways Works, Part 1: Environmental Assessment (excluding Ecology) report of the Proposed Swarthorpe Section ES.
3. Anticipated effects on wider community areas are not reported on this set of figures, but are instead considered in the Volume 5, Off-Site Highways Works, Part 1 report.
4. Given the geographically broad nature of anticipated effects on transport planning, this topic is not addressed on this set of figures, but is instead reported in the Volume 5, Off-Site Highways Works, Part 1 report.
5. The findings of the terrestrial and aquatic ecological assessment are not addressed on this set of figures, and are instead reported separately in Volume 5, Off-Site Highways Works, Part 2: Environmental Assessment - Terrestrial and Aquatic Ecology report of the Proposed Swarthorpe Section ES.
6. For further detail of the planning application boundary refer to Series 12 of the Planning Application Drawings.

Legend

Highways Works

Planning Application Boundary

Road Widening (RW)

Passing Place (PP)

Environmental Constraints

Bowland Fells National Character Area

Area of Outstanding Natural Beauty

HIGHWAYS WORKS LOCATION: RW23

Baseline

This reporting sheet shows baseline environmental features, designations and assets which have been considered in the environmental assessment process. Accounting for the topic reporting exclusions described in the 'Notes' section of this sheet (which are instead reported in the Volume 5, Off-Site Highways Works, Part 1 and Part 2 reports), none of these features, when screened against the predicted impacts associated with the proposed off-site highways works using the same methodology described in Volume 2, is anticipated to give rise to likely significant effects.

Likely Significant Effects - Pre-mitigation

No likely significant effects.

Mitigation / Reinstatement

No mitigation required.



01	KB	LT	SH	PLANNING SUBMISSION	6/18/2021
VERSION	AUTH	CHKD	REVD	REASON FOR ISSUE	DATE



UNITED UTILITIES WATER LIMITED
 HAWESWATER AQUEDUCT RESILIENCE PROGRAMME
 MARL HILL AND NEWTON HIGHWAYS WORKS -
 ENVIRONMENTAL ASSESSMENT FIGURES
 PAGE 7 OF 33

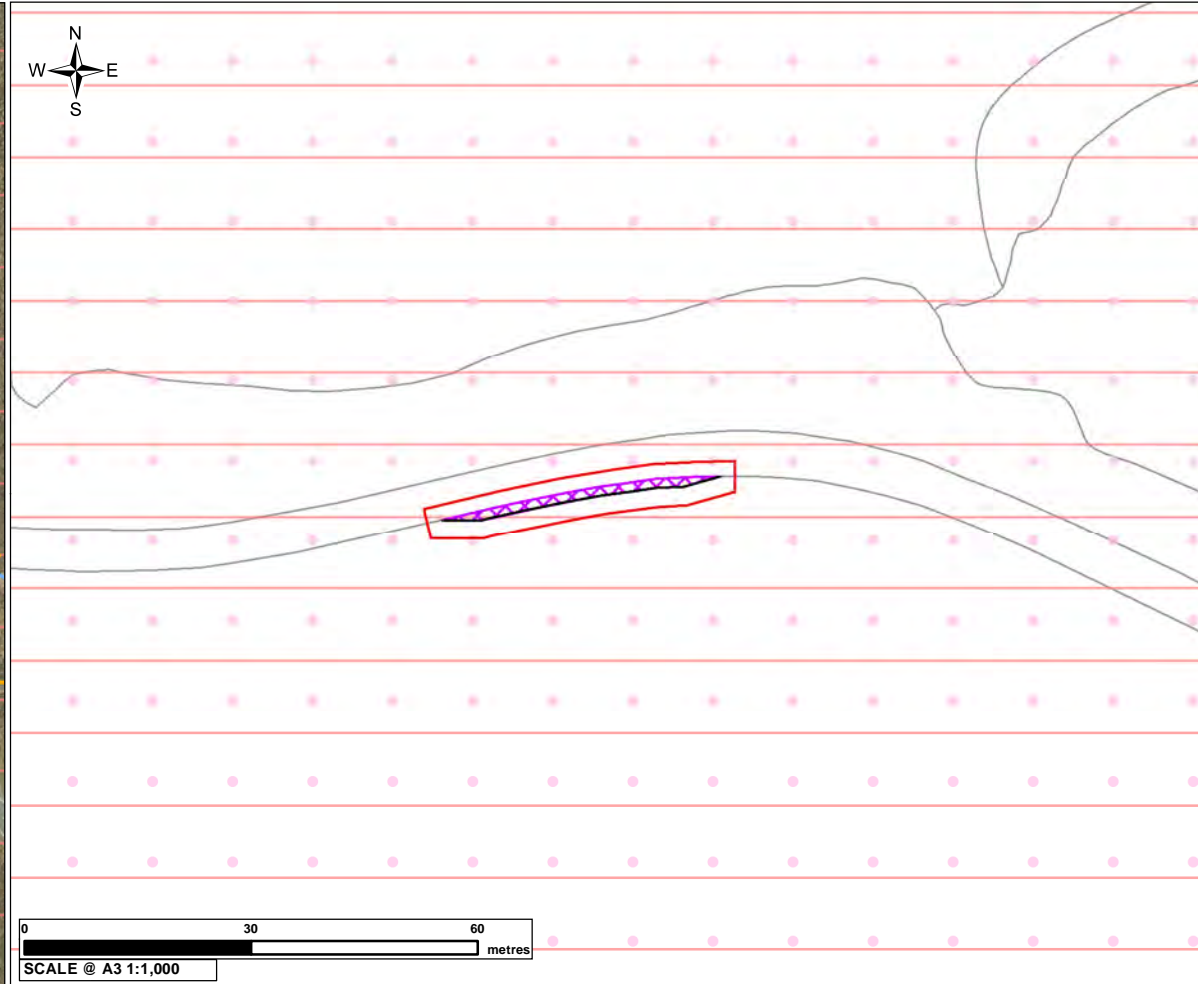
DRAWING NUMBER	RVBC-MH-FIG-V5-P1-002	SHEET SIZE	A3
REVISION	01		

CONTEXT PLAN



SCALE @ A3 1:2,000

HIGHWAYS WORKS AND ENVIRONMENTAL CONSTRAINTS



SCALE @ A3 1:1,000

MARL HILL AND NEWTON-IN-BOWLAND COMPOUNDS HIGHWAYS WORKS

1. The findings of the off-site highways works environmental topic appraisals are only reported on the individual pages of this set of figures for those topics where likely significant effects are considered likely to occur. As such, no text is included on the individual pages of this set of figures for those topics where likely significant effects are not anticipated.
2. Given the geographically broad nature of anticipated effects on arboricultural resources illustrated on this set of figures, no narrative text has been included in the reporting on the figures for this topic. Effects on arboriculture are instead reported in Volume 5, Off-Site Highways Works, Part 1: Environmental Assessment (excluding Ecology) report of the Proposed Swarther Section ES.
3. Anticipated effects on wider community areas are not reported on this set of figures, but are instead considered in the Volume 5, Off-Site Highways Works, Part 1 report.
4. Given the geographically broad nature of anticipated effects on transport planning, this topic is not addressed on this set of figures, but is instead reported in the Volume 5, Off-Site Highways Works, Part 1 report.
5. The findings of the terrestrial and aquatic ecological assessment are not addressed on this set of figures, and are instead reported separately in Volume 5, Off-Site Highways Works, Part 2: Environmental Assessment - Terrestrial and Aquatic Ecology report of the Proposed Swarther Section ES.
6. For further detail of the planning application boundary refer to Series 12 of the Planning Application Drawings.

Legend

Highways Works

- Planning Application Boundary
- Road Widening (RW)
- Passing Place (PP)

Environmental Constraints

- Footpath
- Long Distance Path
- Bowland Fells National Character Area
- Area of Outstanding Natural Beauty



HIGHWAYS WORKS LOCATION: RW22

Baseline

Geomorphology

Bonstone Brook, Unnamed Watercourse 2096

Likely Significant Effects - Pre-mitigation

Geomorphology

Likely temporary significant effect to Bonstone Brook from increased fine sediment input. Likely permanent significant effect to Unnamed Watercourse 2096 due to potential channel instability.

Mitigation / Reinstatement

Geomorphology

Add coarse sediment where impact occurs. Reinstatement to be supervised by a geomorphologist or Ecological Clerk of Works.

01	KB	LT	SH	PLANNING SUBMISSION	6/18/2021
VERSION	AUTH	CHKD	REVD	REASON FOR ISSUE	DATE



UNITED UTILITIES WATER LIMITED
 HAWESWATER AQUEDUCT RESILIENCE PROGRAMME
 MARL HILL AND NEWTON HIGHWAYS WORKS -
 ENVIRONMENTAL ASSESSMENT FIGURES
 PAGE 8 OF 33

DRAWING NUMBER	RVBC-MH-FIG-V5-P1-002	SHEET SIZE	A3
REVISION	01		

CONTEXT PLAN



HIGHWAYS WORKS AND ENVIRONMENTAL CONSTRAINTS



MARL HILL AND NEWTON-IN-BOWLAND COMPOUNDS HIGHWAYS WORKS

1. The findings of the off-site highways works environmental topic appraisals are only reported on the individual pages of this set of figures for those topics where likely significant effects are considered likely to occur. As such, no text is included on the individual pages of this set of figures for those topics where likely significant effects are not anticipated.
2. Given the geographically broad nature of anticipated effects on arboricultural resources illustrated on this set of figures, no narrative text has been included in the reporting on the figures for this topic. Effects on arboriculture are instead reported in Volume 5, Off-Site Highways Works, Part 1: Environmental Assessment (excluding Ecology) report of the Proposed Swarther Section ES.
3. Anticipated effects on wider community areas are not reported on this set of figures, but are instead considered in the Volume 5, Off-Site Highways Works, Part 1 report.
4. Given the geographically broad nature of anticipated effects on transport planning, this topic is not addressed on this set of figures, but is instead reported in the Volume 5, Off-Site Highways Works, Part 1 report.
5. The findings of the terrestrial and aquatic ecological assessment are not addressed on this set of figures, and are instead reported separately in Volume 5, Off-Site Highways Works, Part 2: Environmental Assessment - Terrestrial and Aquatic Ecology report of the Proposed Swarther Section ES.
6. For further detail of the planning application boundary refer to Series 12 of the Planning Application Drawings.

Legend

- Highways Works**
- Planning Application Boundary
 - Road Widening (RW)
 - Passing Place (PP)
- Environmental Constraints**
- Viewpoint Location
 - Footpath
 - Bowland Fells National Character Area
 - Area of Outstanding Natural Beauty

HIGHWAYS WORKS LOCATION: PP01

Baseline

Landscape and Visual

PRoW 3-43-FP 1 (T4A/12)

Noise and Vibration

Properties along Ribble Lane and Chatburn.

Likely Significant Effects - Pre-mitigation

Landscape and Visual

Likely significant effect to the users of PRoW 3-43-FP 1 (T4A/12) from visual impact during construction.

Noise and Vibration

Likely significant effect from noise and vibration on the residents along Ribble Lane representative of multiple receptors in Chatburn, 10m from the highway improvement works, representative of multiple receptors in Chatburn, during construction.

Mitigation / Reinstatement

Landscape and Visual

Land reinstated to original profiles and returned to agricultural use. Reinstatement of grass sward and stone walls.

Noise and Vibration

Implementation of CCoP for control of disruption during construction noise. In addition the screening of particularly noisy activities will be considered.



01	KB	LT	SH	PLANNING SUBMISSION	6/18/2021
VERSION	AUTH	CHKD	REVD	REASON FOR ISSUE	DATE

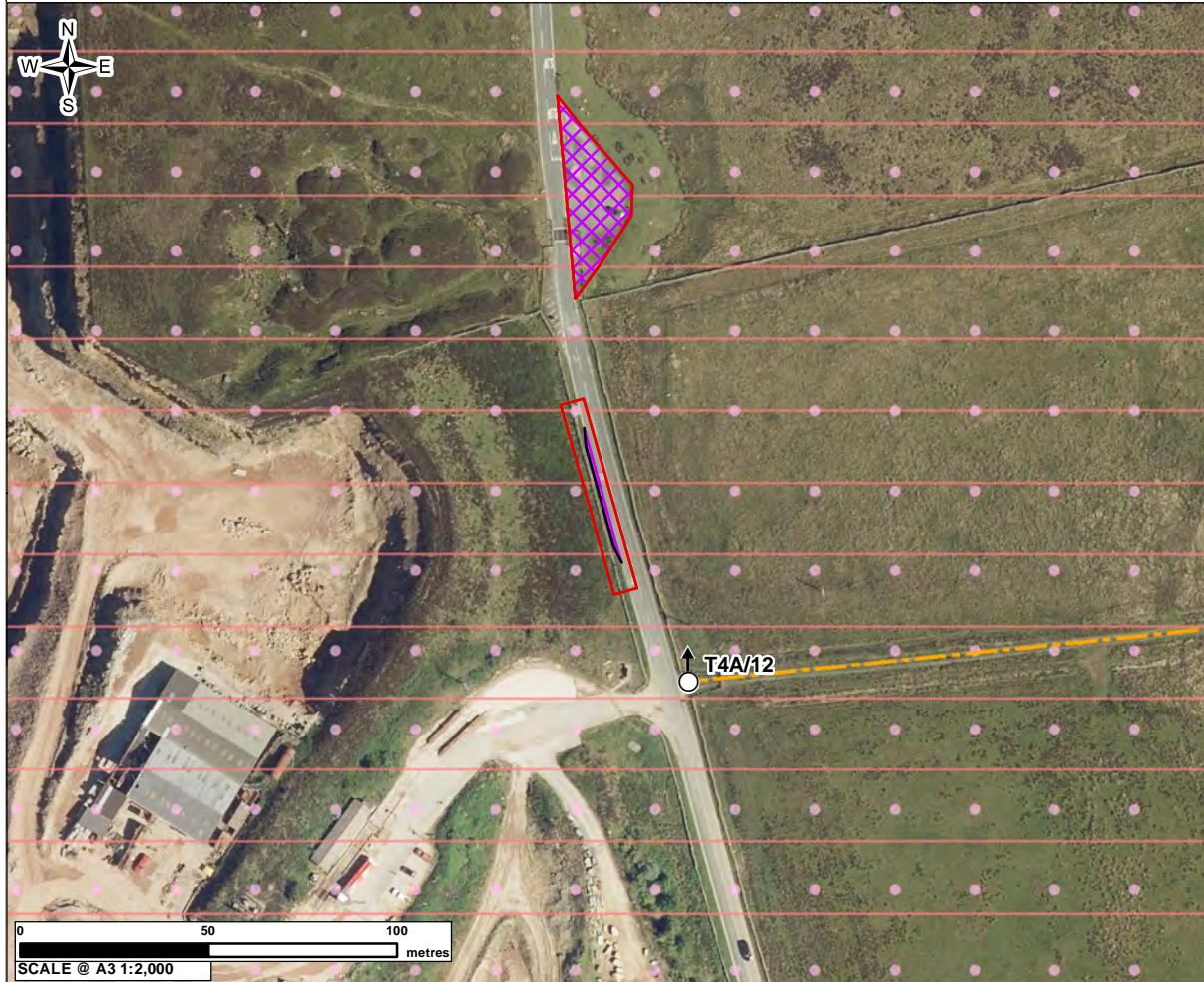


UNITED UTILITIES WATER LIMITED
 HAWESWATER AQUEDUCT RESILIENCE PROGRAMME
 MARL HILL AND NEWTON HIGHWAYS WORKS -
 ENVIRONMENTAL ASSESSMENT FIGURES
 PAGE 9 OF 33

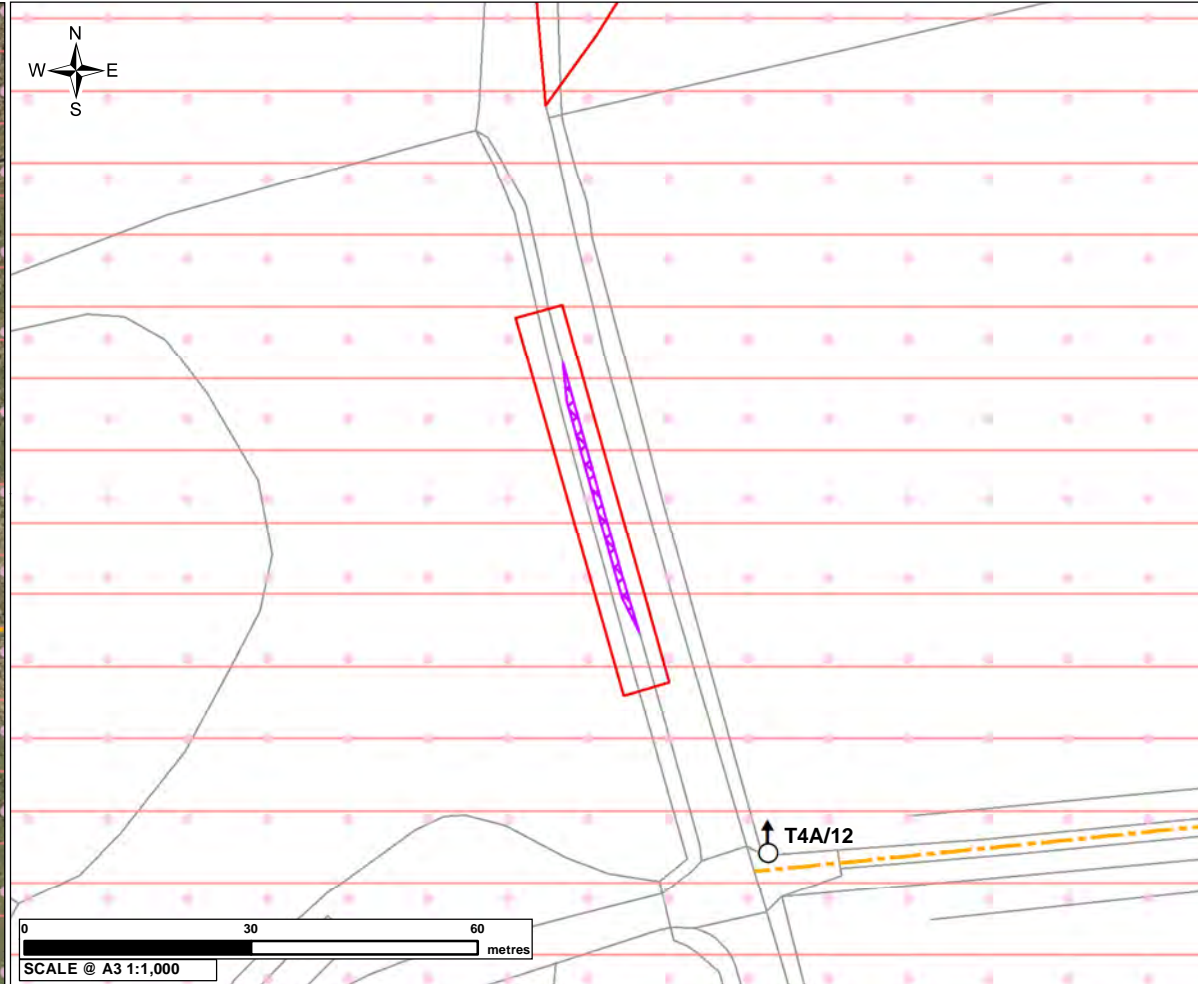
DRAWING NUMBER	RVBC-MH-FIG-V5-P1-002	SHEET SIZE	A3
		REVISION	01

The copyright of this document, which contains information of a proprietary nature, is vested in United Utilities Water Limited. The content of this document may not be used for purposes other than that for which it has been supplied and may not be reproduced, either wholly or in part, in any way whatsoever. It may not be used by, or its contents divulged to any other person whatsoever without the prior written permission of United Utilities Water Limited. Copyright Acknowledgement: Use of Ordnance Survey map data sanctioned by the controller of H.M. Stationery Office, OS Licence Number 100019326. Crown copyright reserved. Unauthorised production infringes copyright. © Crown copyright and database rights 2020 Ordnance Survey 0100031673. © Historic England 2020. Contains Ordnance Survey data © Crown copyright and database right 2020. Contains OS data © Crown Copyright and database right 2020. Esri, HERE, Garmin, (c) OpenStreetMap contributors, and the GIS user community.

CONTEXT PLAN



HIGHWAYS WORKS AND ENVIRONMENTAL CONSTRAINTS



MARL HILL AND NEWTON-IN-BOWLAND COMPOUNDS HIGHWAYS WORKS

1. The findings of the off-site highways works environmental topic appraisals are only reported on the individual pages of this set of figures for those topics where likely significant effects are considered likely to occur. As such, no text is included on the individual pages of this set of figures for those topics where likely significant effects are not anticipated.
2. Given the geographically broad nature of anticipated effects on arboricultural resources illustrated on this set of figures, no narrative text has been included in the reporting on the figures for this topic. Effects on arboriculture are instead reported in Volume 5, Off-Site Highways Works, Part 1: Environmental Assessment (excluding Ecology) report of the Proposed Swather Section ES.
3. Anticipated effects on wider community areas are not reported on this set of figures, but are instead considered in the Volume 5, Off-Site Highways Works, Part 1 report.
4. Given the geographically broad nature of anticipated effects on transport planning, this topic is not addressed on this set of figures, but is instead reported in the Volume 5, Off-Site Highways Works, Part 1 report.
5. The findings of the terrestrial and aquatic ecological assessment are not addressed on this set of figures, and are instead reported separately in Volume 5, Off-Site Highways Works, Part 2: Environmental Assessment - Terrestrial and Aquatic Ecology report of the Proposed Swather Section ES.
6. For further detail of the planning application boundary refer to Series 12 of the Planning Application Drawings.

Legend

Highways Works

Planning Application Boundary

Road Widening (RW)

Passing Place (PP)

Environmental Constraints

Viewpoint Location

Footpath

Bowland Fells National Character Area

Area of Outstanding Natural Beauty

HIGHWAYS WORKS LOCATION: RW21

Baseline

Landscape and Visual

PRoW 3-43-FP 1 (T4A/12)

Likely Significant Effects - Pre-mitigation

Landscape and Visual

Likely significant effect to the users of PRoW 3-43-FP 1 (T4A/12) from visual impact during construction.

Mitigation / Reinstatement

Landscape and Visual

Land reinstated to original profiles and returned to agricultural use. Reinstatement of grass sward and stone walls.



01	KB	LT	SH	PLANNING SUBMISSION	6/18/2021
VERSION	AUTH	CHKD	REVD	REASON FOR ISSUE	DATE



UNITED UTILITIES WATER LIMITED
 HAWESWATER AQUEDUCT RESILIENCE PROGRAMME
 MARL HILL AND NEWTON HIGHWAYS WORKS -
 ENVIRONMENTAL ASSESSMENT FIGURES
 PAGE 10 OF 33

DRAWING NUMBER	SHEET SIZE
RVBC-MH-FIG-V5-P1-002	A3
	REVISION
	01

The copyright of this document, which contains information of a proprietary nature, is vested in United Utilities Water Limited. The content of this document may not be used for purposes other than that for which it has been supplied and may not be reproduced, either wholly or in part, in any way whatsoever. It may not be used by, or its contents divulged to any other person whatsoever without the prior written permission of United Utilities Water Limited. Copyright Acknowledgement: Use of Ordnance Survey map data sanctioned by the controller of H.M. Stationery Office, OS Licence Number 100019326. Crown copyright reserved. Unauthorised production infringes copyright. © Crown copyright and database rights 2020 Ordnance Survey 0100031673. © Historic England 2020. Contains Ordnance Survey data © Crown copyright and database right 2020. Contains OS data © Crown Copyright and database right 2020. Esri, HERE, Garmin, (c) OpenStreetMap contributors, and the GIS user community.

CONTEXT PLAN



SCALE @ A3 1:2,000

HIGHWAYS WORKS AND ENVIRONMENTAL CONSTRAINTS



SCALE @ A3 1:1,000

MARL HILL AND NEWTON-IN-BOWLAND COMPOUNDS HIGHWAYS WORKS

1. The findings of the off-site highways works environmental topic appraisals are only reported on the individual pages of this set of figures for those topics where likely significant effects are considered likely to occur. As such, no text is included on the individual pages of this set of figures for those topics where likely significant effects are not anticipated.
2. Given the geographically broad nature of anticipated effects on arboricultural resources illustrated on this set of figures, no narrative text has been included in the reporting on the figures for this topic. Effects on arboriculture are instead reported in Volume 5, Off-Site Highways Works, Part 1: Environmental Assessment (excluding Ecology) report of the Proposed Swarther Section ES.
3. Anticipated effects on wider community areas are not reported on this set of figures, but are instead considered in the Volume 5, Off-Site Highways Works, Part 1 report.
4. Given the geographically broad nature of anticipated effects on transport planning, this topic is not addressed on this set of figures, but is instead reported in the Volume 5, Off-Site Highways Works, Part 1 report.
5. The findings of the terrestrial and aquatic ecological assessment are not addressed on this set of figures, and are instead reported separately in Volume 5, Off-Site Highways Works, Part 2: Environmental Assessment - Terrestrial and Aquatic Ecology report of the Proposed Swarther Section ES.
6. For further detail of the planning application boundary refer to Series 12 of the Planning Application Drawings.

Legend

Highways Works

Planning Application Boundary

Road Widening (RW)

Passing Place (PP)

Environmental Constraints

Bowland Fells National Character Area

Area of Outstanding Natural Beauty

HIGHWAYS WORKS LOCATION: RW20

Baseline

This reporting sheet shows baseline environmental features, designations and assets which have been considered in the environmental assessment process. Accounting for the topic reporting exclusions described in the 'Notes' section of this sheet (which are instead reported in the Volume 5, Off-Site Highways Works, Part 1 and Part 2 reports), none of these features, when screened against the predicted impacts associated with the proposed off-site highways works using the same methodology described in Volume 2, is anticipated to give rise to likely significant effects.

Likely Significant Effects - Pre-mitigation

No likely significant effects.

Mitigation / Reinstatement

No mitigation required.



01	KB	LT	SH	PLANNING SUBMISSION	6/18/2021
VERSION	AUTH	CHKD	REVD	REASON FOR ISSUE	DATE



UNITED UTILITIES WATER LIMITED
 HAWESWATER AQUEDUCT RESILIENCE PROGRAMME
 MARL HILL AND NEWTON HIGHWAYS WORKS -
 ENVIRONMENTAL ASSESSMENT FIGURES
 PAGE 11 OF 33

DRAWING NUMBER	RVBC-MH-FIG-V5-P1-002	SHEET SIZE	A3
		REVISION	01

CONTEXT PLAN



SCALE @ A3 1:2,000

HIGHWAYS WORKS AND ENVIRONMENTAL CONSTRAINTS



SCALE @ A3 1:1,000

MARL HILL AND NEWTON-IN-BOWLAND COMPOUNDS HIGHWAYS WORKS

1. The findings of the off-site highways works environmental topic appraisals are only reported on the individual pages of this set of figures for those topics where likely significant effects are considered likely to occur. As such, no text is included on the individual pages of this set of figures for those topics where likely significant effects are not anticipated.
2. Given the geographically broad nature of anticipated effects on arboricultural resources illustrated on this set of figures, no narrative text has been included in the reporting on the figures for this topic. Effects on arboriculture are instead reported in Volume 5, Off-Site Highways Works, Part 1: Environmental Assessment (excluding Ecology) report of the Proposed Swarther Section ES.
3. Anticipated effects on wider community areas are not reported on this set of figures, but are instead considered in the Volume 5, Off-Site Highways Works, Part 1 report.
4. Given the geographically broad nature of anticipated effects on transport planning, this topic is not addressed on this set of figures, but is instead reported in the Volume 5, Off-Site Highways Works, Part 1 report.
5. The findings of the terrestrial and aquatic ecological assessment are not addressed on this set of figures, and are instead reported separately in Volume 5, Off-Site Highways Works, Part 2: Environmental Assessment - Terrestrial and Aquatic Ecology report of the Proposed Swarther Section ES.
6. For further detail of the planning application boundary refer to Series 12 of the Planning Application Drawings.

Legend

Highways Works

Planning Application Boundary

Road Widening (RW)

Passing Place (PP)

Environmental Constraints

Bowland Fells National Character Area

Area of Outstanding Natural Beauty

Arboriculture Tree Group Canopies - RAG Impacts

Tree Group/Woodland/Hedgerow Feature at Risk of Removal but Aiming to Retain

Tree Group/Woodland/Hedgerow Feature to be Retained with Protection Measures

HIGHWAYS WORKS LOCATION: RW19

Baseline

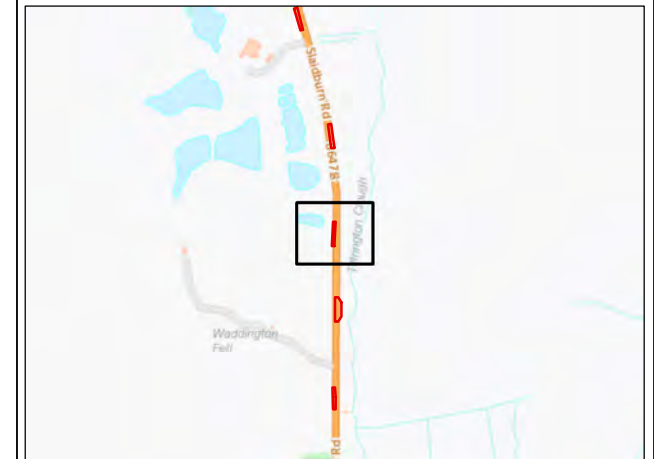
This reporting sheet shows baseline environmental features, designations and assets which have been considered in the environmental assessment process. Accounting for the topic reporting exclusions described in the 'Notes' section of this sheet (which are instead reported in the Volume 5, Off-Site Highways Works, Part 1 and Part 2 reports), none of these features, when screened against the predicted impacts associated with the proposed off-site highways works using the same methodology described in Volume 2, is anticipated to give rise to likely significant effects.

Likely Significant Effects - Pre-mitigation

No likely significant effects.

Mitigation / Reinstatement

No mitigation required.



01	KB	LT	SH	PLANNING SUBMISSION	6/18/2021
VERSION	AUTH	CHKD	REVD	REASON FOR ISSUE	DATE



UNITED UTILITIES WATER LIMITED
 HAWESWATER AQUEDUCT RESILIENCE PROGRAMME
 MARL HILL AND NEWTON HIGHWAYS WORKS -
 ENVIRONMENTAL ASSESSMENT FIGURES
 PAGE 12 OF 33

DRAWING NUMBER	SHEET SIZE
RVBC-MH-FIG-V5-P1-002	A3
	REVISION
	01

CONTEXT PLAN



HIGHWAYS WORKS AND ENVIRONMENTAL CONSTRAINTS



MARL HILL AND NEWTON-IN-BOWLAND COMPOUNDS HIGHWAYS WORKS

1. The findings of the off-site highways works environmental topic appraisals are only reported on the individual pages of this set of figures for those topics where likely significant effects are considered likely to occur. As such, no text is included on the individual pages of this set of figures for those topics where likely significant effects are not anticipated.
2. Given the geographically broad nature of anticipated effects on arboricultural resources illustrated on this set of figures, no narrative text has been included in the reporting on the figures for this topic. Effects on arboriculture are instead reported in Volume 5, Off-Site Highways Works, Part 1: Environmental Assessment (excluding Ecology) report of the Proposed Swarther Section ES.
3. Anticipated effects on wider community areas are not reported on this set of figures, but are instead considered in the Volume 5, Off-Site Highways Works, Part 1 report.
4. Given the geographically broad nature of anticipated effects on transport planning, this topic is not addressed on this set of figures, but is instead reported in the Volume 5, Off-Site Highways Works, Part 1 report.
5. The findings of the terrestrial and aquatic ecological assessment are not addressed on this set of figures, and are instead reported separately in Volume 5, Off-Site Highways Works, Part 2: Environmental Assessment - Terrestrial and Aquatic Ecology report of the Proposed Swarther Section ES.
6. For further detail of the planning application boundary refer to Series 12 of the Planning Application Drawings.

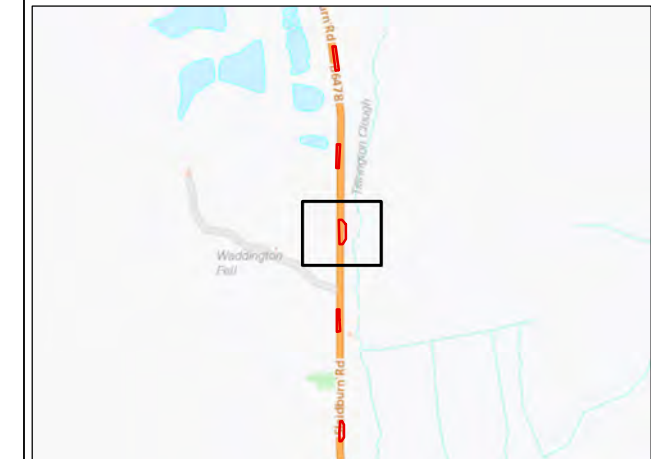
Legend

Highways Works

- Planning Application Boundary
- Road Widening (RW)
- Passing Place (PP)

Environmental Constraints

- Bowland Fells National Character Area
- Bowland Fringe and Pendle Hill National Character Area
- Area of Outstanding Natural Beauty



HIGHWAYS WORKS LOCATION: RW18

Baseline

This reporting sheet shows baseline environmental features, designations and assets which have been considered in the environmental assessment process. Accounting for the topic reporting exclusions described in the 'Notes' section of this sheet (which are instead reported in the Volume 5, Off-Site Highways Works, Part 1 and Part 2 reports), none of these features, when screened against the predicted impacts associated with the proposed off-site highways works using the same methodology described in Volume 2, is anticipated to give rise to likely significant effects.

Likely Significant Effects - Pre-mitigation

No likely significant effects.

Mitigation / Reinstatement

No mitigation required.

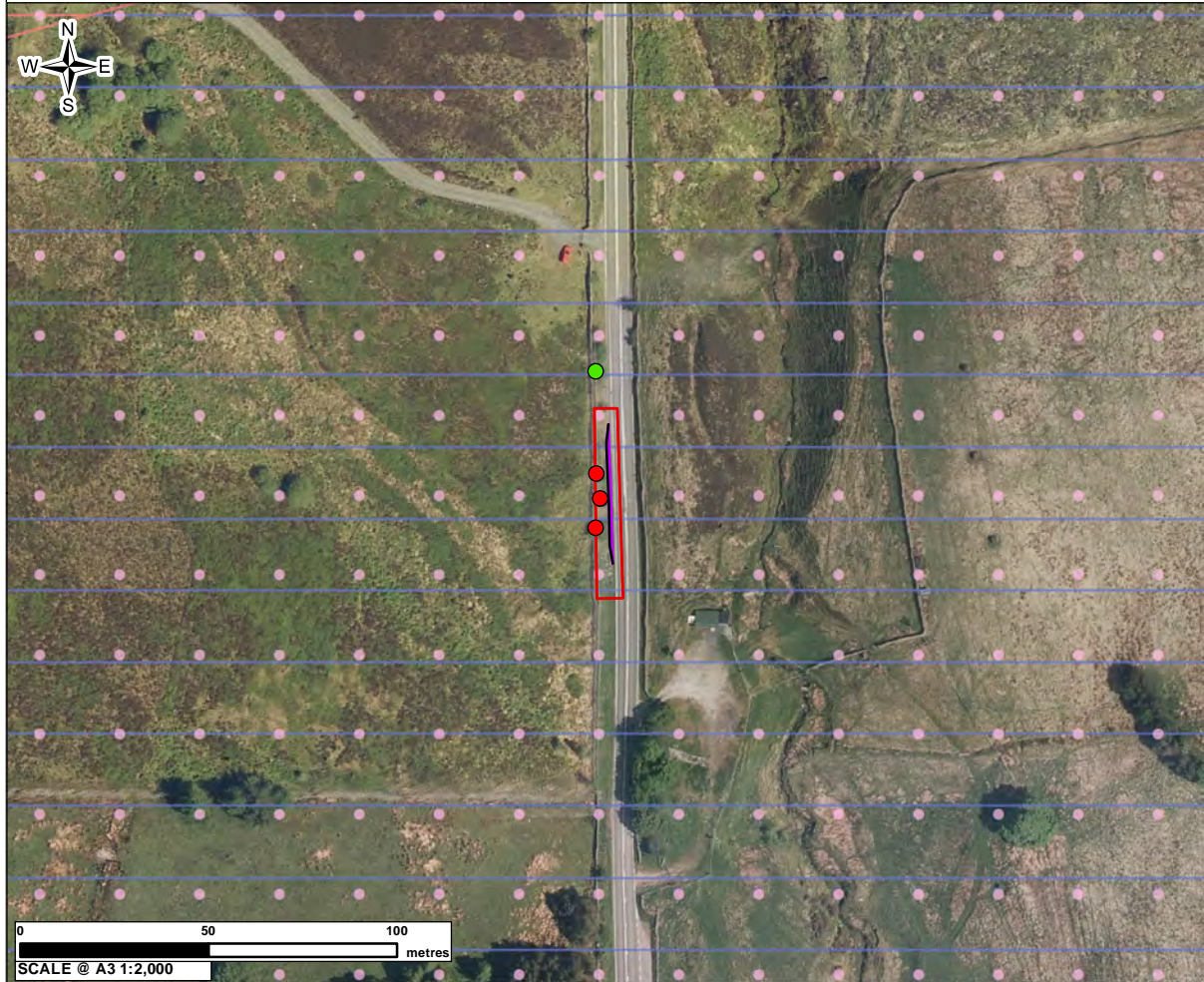
01	KB	LT	SH	PLANNING SUBMISSION	6/18/2021
VERSION	AUTH	CHKD	REVD	REASON FOR ISSUE	DATE



UNITED UTILITIES WATER LIMITED
 HAWESWATER AQUEDUCT RESILIENCE PROGRAMME
 MARL HILL AND NEWTON HIGHWAYS WORKS -
 ENVIRONMENTAL ASSESSMENT FIGURES
 PAGE 13 OF 33

DRAWING NUMBER	RVBC-MH-FIG-V5-P1-002	SHEET SIZE	A3
REVISION	01		

CONTEXT PLAN



HIGHWAYS WORKS AND ENVIRONMENTAL CONSTRAINTS



MARL HILL AND NEWTON-IN-BOWLAND COMPOUNDS HIGHWAYS WORKS

1. The findings of the off-site highways works environmental topic appraisals are only reported on the individual pages of this set of figures for those topics where likely significant effects are considered likely to occur. As such, no text is included on the individual pages of this set of figures for those topics where likely significant effects are not anticipated.
2. Given the geographically broad nature of anticipated effects on arboricultural resources illustrated on this set of figures, no narrative text has been included in the reporting on the figures for this topic. Effects on arboriculture are instead reported in Volume 5, Off-Site Highways Works, Part 1: Environmental Assessment (excluding Ecology) report of the Proposed Swarther Section ES.
3. Anticipated effects on wider community areas are not reported on this set of figures, but are instead considered in the Volume 5, Off-Site Highways Works, Part 1 report.
4. Given the geographically broad nature of anticipated effects on transport planning, this topic is not addressed on this set of figures, but is instead reported in the Volume 5, Off-Site Highways Works, Part 1 report.
5. The findings of the terrestrial and aquatic ecological assessment are not addressed on this set of figures, and are instead reported separately in Volume 5, Off-Site Highways Works, Part 2: Environmental Assessment - Terrestrial and Aquatic Ecology report of the Proposed Swarther Section ES.
6. For further detail of the planning application boundary refer to Series 12 of the Planning Application Drawings.

Legend

Highways Works

- Planning Application Boundary
- Road Widening (RW)
- Passing Place (PP)

Environmental Constraints

- Bowland Fells National Character Area
- Bowland Fringe and Pendle Hill National Character Area
- Area of Outstanding Natural Beauty

Arboriculture Tree Point - RAG Impacts

- Individual tree to be removed
- Individual tree to be retained with protection measures

HIGHWAYS WORKS LOCATION: RW17

Baseline

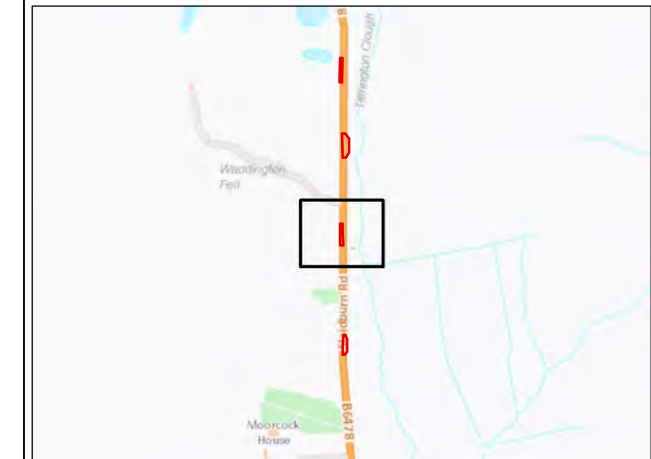
This reporting sheet shows baseline environmental features, designations and assets which have been considered in the environmental assessment process. Accounting for the topic reporting exclusions described in the 'Notes' section of this sheet (which are instead reported in the Volume 5, Off-Site Highways Works, Part 1 and Part 2 reports), none of these features, when screened against the predicted impacts associated with the proposed off-site highways works using the same methodology described in Volume 2, is anticipated to give rise to likely significant effects.

Likely Significant Effects - Pre-mitigation

No likely significant effects.

Mitigation / Reinstatement

No mitigation required.



01	KB	LT	SH	PLANNING SUBMISSION	6/18/2021
VERSION	AUTH	CHKD	REVD	REASON FOR ISSUE	DATE



UNITED UTILITIES WATER LIMITED
 HAWESWATER AQUEDUCT RESILIENCE PROGRAMME
 MARL HILL AND NEWTON HIGHWAYS WORKS -
 ENVIRONMENTAL ASSESSMENT FIGURES
 PAGE 14 OF 33

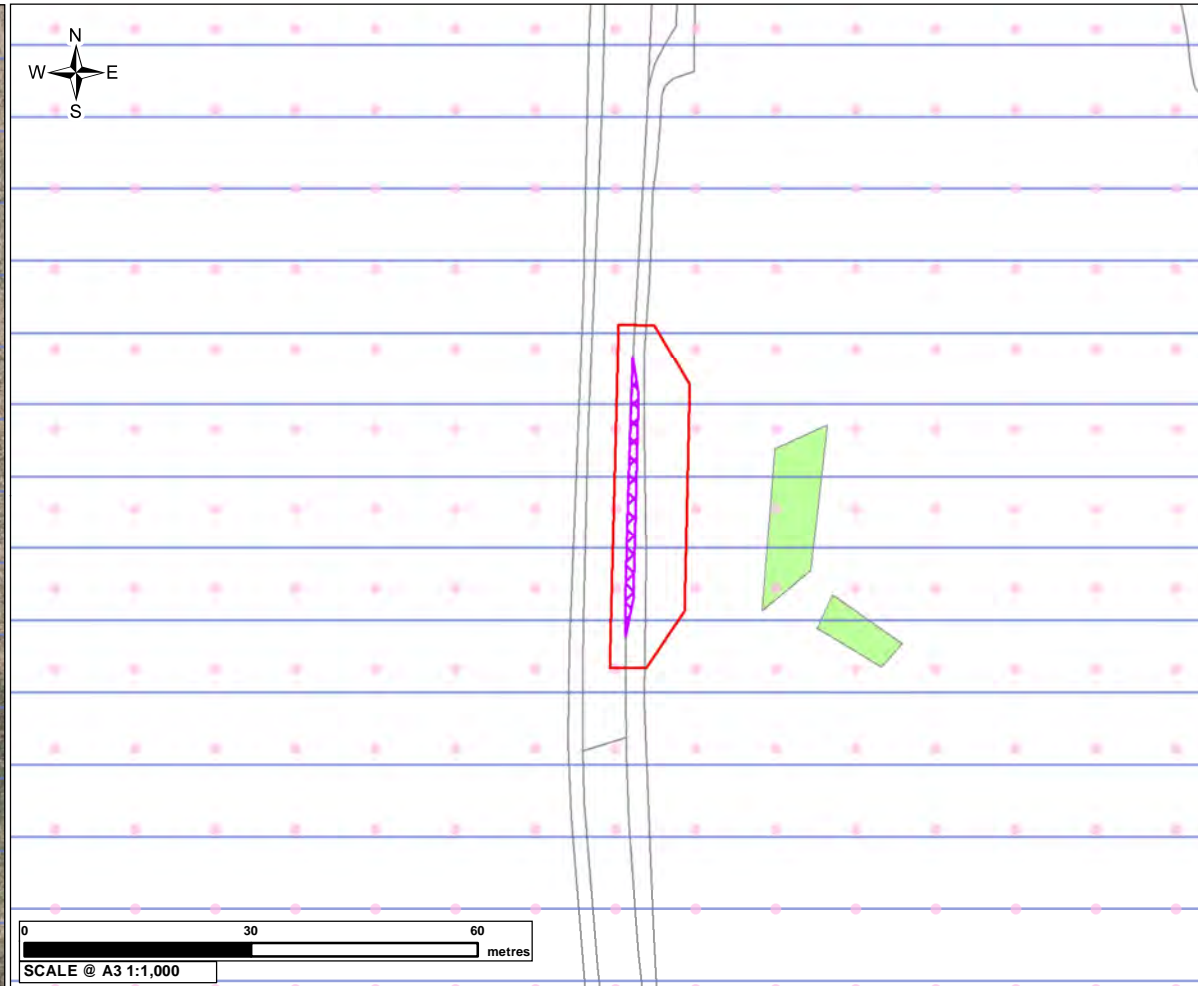
DRAWING NUMBER	RVBC-MH-FIG-V5-P1-002	SHEET SIZE	A3
		REVISION	01

CONTEXT PLAN



SCALE @ A3 1:2,000

HIGHWAYS WORKS AND ENVIRONMENTAL CONSTRAINTS



SCALE @ A3 1:1,000

MARL HILL AND NEWTON-IN-BOWLAND COMPOUNDS HIGHWAYS WORKS

1. The findings of the off-site highways works environmental topic appraisals are only reported on the individual pages of this set of figures for those topics where likely significant effects are considered likely to occur. As such, no text is included on the individual pages of this set of figures for those topics where likely significant effects are not anticipated.
2. Given the geographically broad nature of anticipated effects on arboricultural resources illustrated on this set of figures, no narrative text has been included in the reporting on the figures for this topic. Effects on arboriculture are instead reported in Volume 5, Off-Site Highways Works, Part 1: Environmental Assessment (excluding Ecology) report of the Proposed Swarther Section ES.
3. Anticipated effects on wider community areas are not reported on this set of figures, but are instead considered in the Volume 5, Off-Site Highways Works, Part 1 report.
4. Given the geographically broad nature of anticipated effects on transport planning, this topic is not addressed on this set of figures, but is instead reported in the Volume 5, Off-Site Highways Works, Part 1 report.
5. The findings of the terrestrial and aquatic ecological assessment are not addressed on this set of figures, and are instead reported separately in Volume 5, Off-Site Highways Works, Part 2: Environmental Assessment - Terrestrial and Aquatic Ecology report of the Proposed Swarther Section ES.
6. For further detail of the planning application boundary refer to Series 12 of the Planning Application Drawings.

Legend

Highways Works

- Planning Application Boundary
- Road Widening (RW)
- Passing Place (PP)

Environmental Constraints

- Bowland Fringe and Pendle Hill National Character Area
- Area of Outstanding Natural Beauty
- Arboriculture Tree Group Canopies - RAG Impacts
- Tree Group/Woodland/Hedgerow Feature to be Retained with Protection Measures

HIGHWAYS WORKS LOCATION: RW16

Baseline

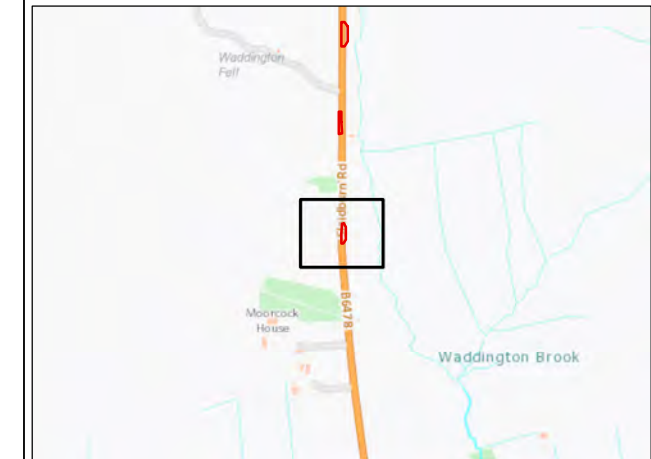
This reporting sheet shows baseline environmental features, designations and assets which have been considered in the environmental assessment process. Accounting for the topic reporting exclusions described in the 'Notes' section of this sheet (which are instead reported in the Volume 5, Off-Site Highways Works, Part 1 and Part 2 reports), none of these features, when screened against the predicted impacts associated with the proposed off-site highways works using the same methodology described in Volume 2, is anticipated to give rise to likely significant effects.

Likely Significant Effects - Pre-mitigation

No likely significant effects.

Mitigation / Reinstatement

No mitigation required.



01	KB	LT	SH	PLANNING SUBMISSION	6/18/2021
VERSION	AUTH	CHKD	REVD	REASON FOR ISSUE	DATE



UNITED UTILITIES WATER LIMITED
 HAWESWATER AQUEDUCT RESILIENCE PROGRAMME
 MARL HILL AND NEWTON HIGHWAYS WORKS -
 ENVIRONMENTAL ASSESSMENT FIGURES
 PAGE 15 OF 33

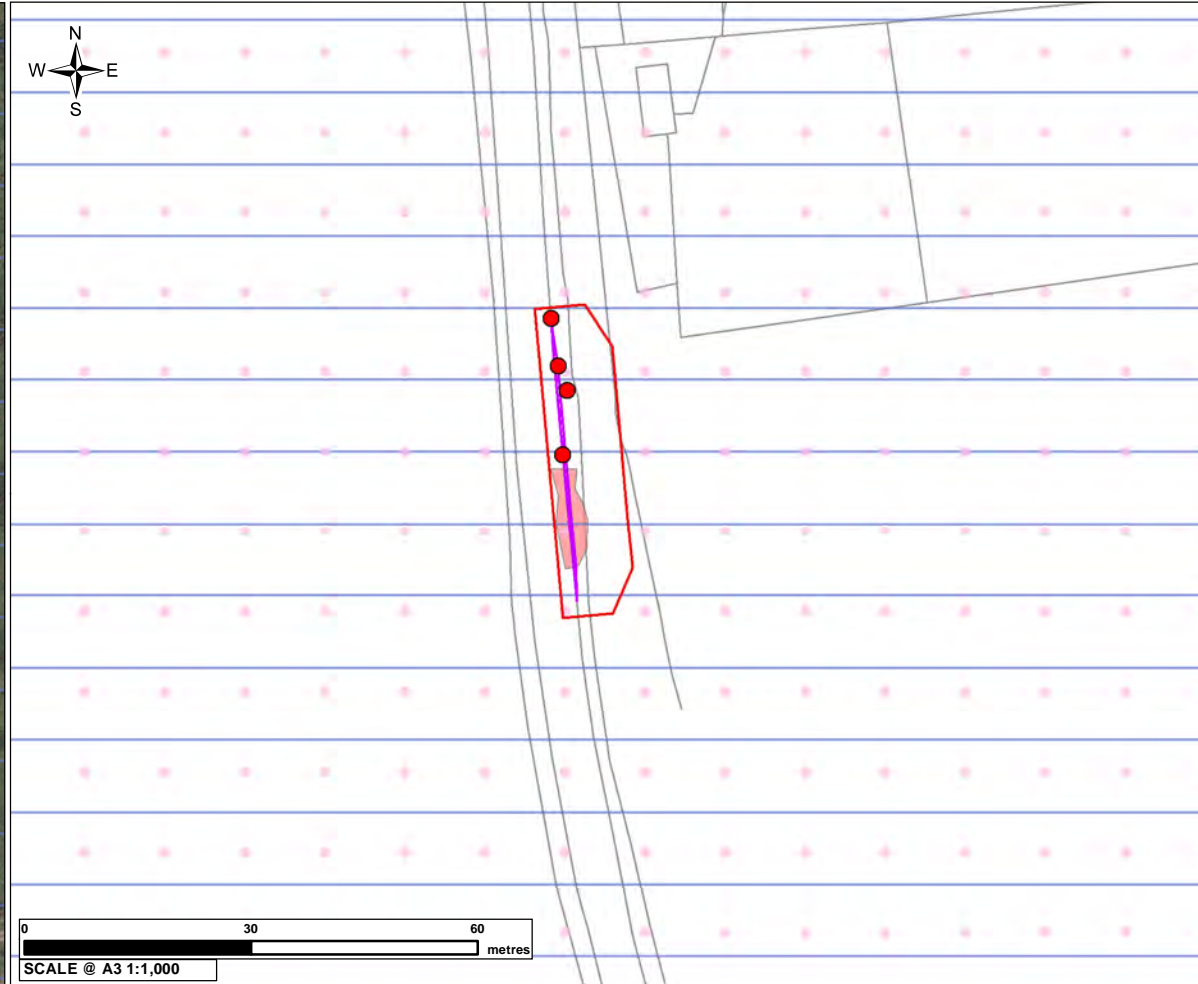
DRAWING NUMBER	RVBC-MH-FIG-V5-P1-002	SHEET SIZE	A3
		REVISION	01

CONTEXT PLAN



SCALE @ A3 1:2,000

HIGHWAYS WORKS AND ENVIRONMENTAL CONSTRAINTS



SCALE @ A3 1:1,000

MARL HILL AND NEWTON-IN-BOWLAND COMPOUNDS HIGHWAYS WORKS

1. The findings of the off-site highways works environmental topic appraisals are only reported on the individual pages of this set of figures for those topics where likely significant effects are considered likely to occur. As such, no text is included on the individual pages of this set of figures for those topics where likely significant effects are not anticipated.
2. Given the geographically broad nature of anticipated effects on arboricultural resources illustrated on this set of figures, no narrative text has been included in the reporting on the figures for this topic. Effects on arboriculture are instead reported in Volume 5, Off-Site Highways Works, Part 1: Environmental Assessment (excluding Ecology) report of the Proposed Swarther Section ES.
3. Anticipated effects on wider community areas are not reported on this set of figures, but are instead considered in the Volume 5, Off-Site Highways Works, Part 1 report.
4. Given the geographically broad nature of anticipated effects on transport planning, this topic is not addressed on this set of figures, but is instead reported in the Volume 5, Off-Site Highways Works, Part 1 report.
5. The findings of the terrestrial and aquatic ecological assessment are not addressed on this set of figures, and are instead reported separately in Volume 5, Off-Site Highways Works, Part 2: Environmental Assessment - Terrestrial and Aquatic Ecology report of the Proposed Swarther Section ES.
6. For further detail of the planning application boundary refer to Series 12 of the Planning Application Drawings.

Legend

Highways Works

- Planning Application Boundary
- Road Widening (RW)
- Passing Place (PP)

Environmental Constraints

- Bowland Fringe and Pendle Hill National Character Area
- Area of Outstanding Natural Beauty

Arboriculture Tree Point - RAG Impacts

- Individual tree to be removed

Arboriculture Tree Group Canopies - RAG Impacts

- Tree Group/Woodland/Hedgerow Feature to be Removed



HIGHWAYS WORKS LOCATION: RW15

Baseline

This reporting sheet shows baseline environmental features, designations and assets which have been considered in the environmental assessment process. Accounting for the topic reporting exclusions described in the 'Notes' section of this sheet (which are instead reported in the Volume 5, Off-Site Highways Works, Part 1 and Part 2 reports), none of these features, when screened against the predicted impacts associated with the proposed off-site highways works using the same methodology described in Volume 2, is anticipated to give rise to likely significant effects.

Likely Significant Effects - Pre-mitigation

No likely significant effects.

Mitigation / Reinstatement

No mitigation required.

01	KB	LT	SH	PLANNING SUBMISSION	6/18/2021
VERSION	AUTH	CHKD	REVD	REASON FOR ISSUE	DATE



UNITED UTILITIES WATER LIMITED
 HAWESWATER AQUEDUCT RESILIENCE PROGRAMME
 MARL HILL AND NEWTON HIGHWAYS WORKS -
 ENVIRONMENTAL ASSESSMENT FIGURES
 PAGE 16 OF 33

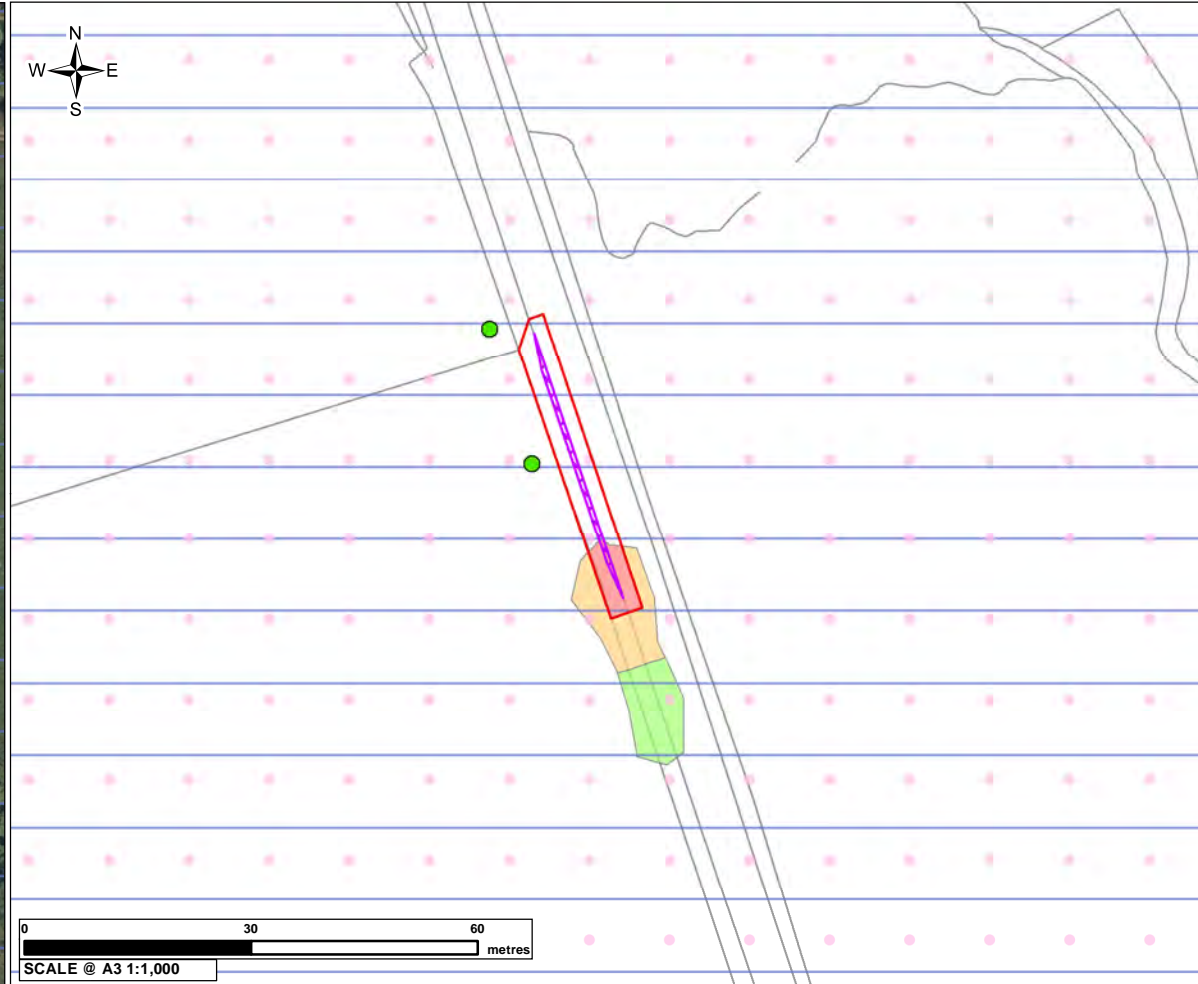
DRAWING NUMBER	SHEET SIZE
RVBC-MH-FIG-V5-P1-002	A3
	REVISION
	01

CONTEXT PLAN



SCALE @ A3 1:2,000

HIGHWAYS WORKS AND ENVIRONMENTAL CONSTRAINTS



SCALE @ A3 1:1,000

MARL HILL AND NEWTON-IN-BOWLAND COMPOUNDS HIGHWAYS WORKS

1. The findings of the off-site highways works environmental topic appraisals are only reported on the individual pages of this set of figures for those topics where likely significant effects are considered likely to occur. As such, no text is included on the individual pages of this set of figures for those topics where likely significant effects are not anticipated.
2. Given the geographically broad nature of anticipated effects on arboricultural resources illustrated on this set of figures, no narrative text has been included in the reporting on the figures for this topic. Effects on arboriculture are instead reported in Volume 5, Off-Site Highways Works, Part 1: Environmental Assessment (excluding Ecology) report of the Proposed Swarther Section ES.
3. Anticipated effects on wider community areas are not reported on this set of figures, but are instead considered in the Volume 5, Off-Site Highways Works, Part 1 report.
4. Given the geographically broad nature of anticipated effects on transport planning, this topic is not addressed on this set of figures, but is instead reported in the Volume 5, Off-Site Highways Works, Part 1 report.
5. The findings of the terrestrial and aquatic ecological assessment are not addressed on this set of figures, and are instead reported separately in Volume 5, Off-Site Highways Works, Part 2: Environmental Assessment - Terrestrial and Aquatic Ecology report of the Proposed Swarther Section ES.
6. For further detail of the planning application boundary refer to Series 12 of the Planning Application Drawings.

Legend

Highways Works

Planning Application Boundary

Road Widening (RW)

Passing Place (PP)

Environmental Constraints

Bridleway

Bowland Fringe and Pendle Hill National Character Area

Area of Outstanding Natural Beauty

Arboriculture Tree Point - RAG Impacts

Individual tree to be retained with protection measures

Arboriculture Tree Group Canopies - RAG Impacts

Tree Group/Woodland/Hedgerow Feature to be Removed

Tree Group/Woodland/Hedgerow Feature at Risk of Removal but Aiming to Retain

Tree Group/Woodland/Hedgerow Feature to be Retained with Protection Measures

HIGHWAYS WORKS LOCATION: RW14

Baseline

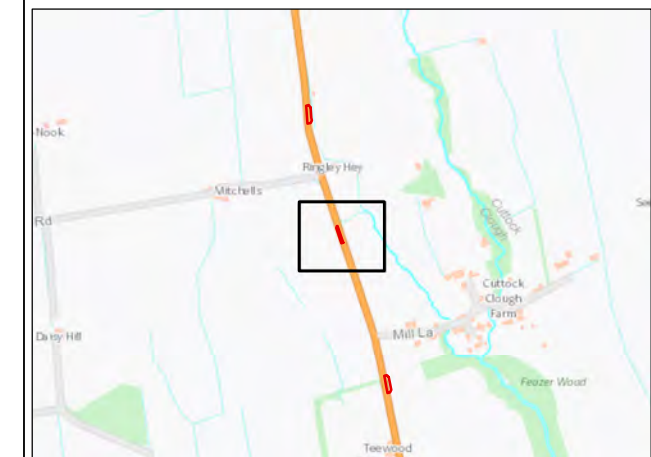
This reporting sheet shows baseline environmental features, designations and assets which have been considered in the environmental assessment process. Accounting for the topic reporting exclusions described in the 'Notes' section of this sheet (which are instead reported in the Volume 5, Off-Site Highways Works, Part 1 and Part 2 reports), none of these features, when screened against the predicted impacts associated with the proposed off-site highways works using the same methodology described in Volume 2, is anticipated to give rise to likely significant effects.

Likely Significant Effects - Pre-mitigation

No likely significant effects.

Mitigation / Reinstatement

No mitigation required.



01	KB	LT	SH	PLANNING SUBMISSION	6/18/2021
VERSION	AUTH	CHKD	REVD	REASON FOR ISSUE	DATE



UNITED UTILITIES WATER LIMITED
HAWESWATER AQUEDUCT RESILIENCE PROGRAMME
MARL HILL AND NEWTON HIGHWAYS WORKS -
ENVIRONMENTAL ASSESSMENT FIGURES
PAGE 17 OF 33

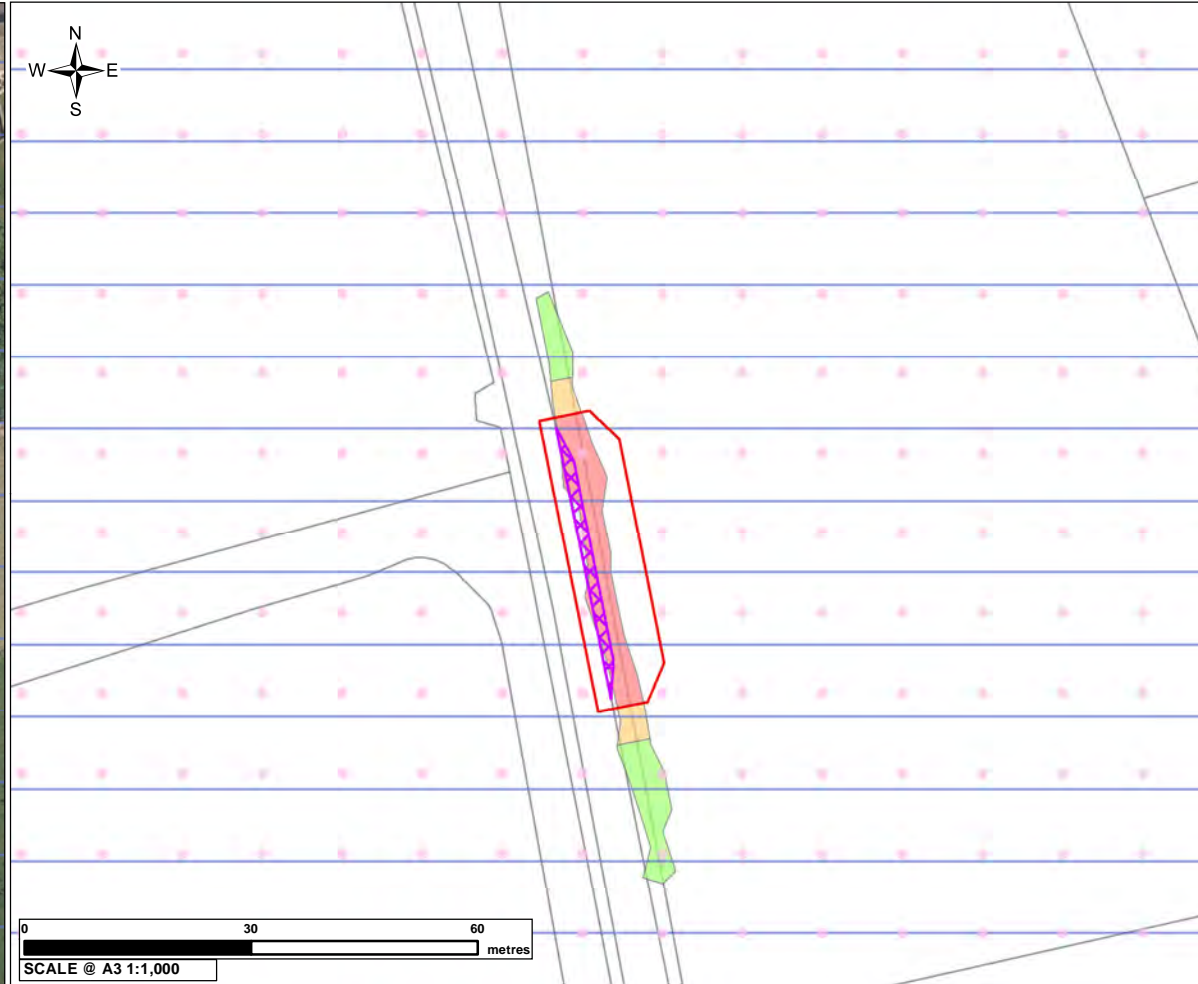
DRAWING NUMBER	RVBC-MH-FIG-V5-P1-002	SHEET SIZE	A3
REVISION	01		

CONTEXT PLAN



SCALE @ A3 1:2,000

HIGHWAYS WORKS AND ENVIRONMENTAL CONSTRAINTS



SCALE @ A3 1:1,000

MARL HILL AND NEWTON-IN-BOWLAND COMPOUNDS HIGHWAYS WORKS

1. The findings of the off-site highways works environmental topic appraisals are only reported on the individual pages of this set of figures for those topics where likely significant effects are considered likely to occur. As such, no text is included on the individual pages of this set of figures for those topics where likely significant effects are not anticipated.
2. Given the geographically broad nature of anticipated effects on arboricultural resources illustrated on this set of figures, no narrative text has been included in the reporting on the figures for this topic. Effects on arboriculture are instead reported in Volume 5, Off-Site Highways Works, Part 1: Environmental Assessment (excluding Ecology) report of the Proposed Swarther Section ES.
3. Anticipated effects on wider community areas are not reported on this set of figures, but are instead considered in the Volume 5, Off-Site Highways Works, Part 1 report.
4. Given the geographically broad nature of anticipated effects on transport planning, this topic is not addressed on this set of figures, but is instead reported in the Volume 5, Off-Site Highways Works, Part 1 report.
5. The findings of the terrestrial and aquatic ecological assessment are not addressed on this set of figures, and are instead reported separately in Volume 5, Off-Site Highways Works, Part 2: Environmental Assessment - Terrestrial and Aquatic Ecology report of the Proposed Swarther Section ES.
6. For further detail of the planning application boundary refer to Series 12 of the Planning Application Drawings.

Legend

- Highways Works**
- Planning Application Boundary
 - Road Widening (RW)
 - Passing Place (PP)
- Environmental Constraints**
- Footpath
 - Bowland Fringe and Pendle Hill National Character Area
 - Area of Outstanding Natural Beauty
- Arboriculture Tree Group Canopies - RAG Impacts**
- Tree Group/Woodland/Hedgerow Feature to be Removed
 - Tree Group/Woodland/Hedgerow Feature at Risk of Removal but Aiming to Retain
 - Tree Group/Woodland/Hedgerow Feature to be Retained with Protection Measures

HIGHWAYS WORKS LOCATION: RW13

Baseline

This reporting sheet shows baseline environmental features, designations and assets which have been considered in the environmental assessment process. Accounting for the topic reporting exclusions described in the 'Notes' section of this sheet (which are instead reported in the Volume 5, Off-Site Highways Works, Part 1 and Part 2 reports), none of these features, when screened against the predicted impacts associated with the proposed off-site highways works using the same methodology described in Volume 2, is anticipated to give rise to likely significant effects.

Likely Significant Effects - Pre-mitigation

No likely significant effects.

Mitigation / Reinstatement

No mitigation required.



01	KB	LT	SH	PLANNING SUBMISSION	6/18/2021
VERSION	AUTH	CHKD	REVD	REASON FOR ISSUE	DATE



UNITED UTILITIES WATER LIMITED
HAWESWATER AQUEDUCT RESILIENCE PROGRAMME
MARL HILL AND NEWTON HIGHWAYS WORKS -
ENVIRONMENTAL ASSESSMENT FIGURES
PAGE 18 OF 33

DRAWING NUMBER	SHEET SIZE
RVBC-MH-FIG-V5-P1-002	A3
	REVISION
	01

CONTEXT PLAN



HIGHWAYS WORKS AND ENVIRONMENTAL CONSTRAINTS



MARL HILL AND NEWTON-IN-BOWLAND COMPOUNDS HIGHWAYS WORKS

- The findings of the off-site highways works environmental topic appraisals are only reported on the individual pages of this set of figures for those topics where likely significant effects are considered likely to occur. As such, no text is included on the individual pages of this set of figures for those topics where likely significant effects are not anticipated.
- Given the geographically broad nature of anticipated effects on arboricultural resources illustrated on this set of figures, no narrative text has been included in the reporting on the figures for this topic. Effects on arboriculture are instead reported in Volume 5, Off-Site Highways Works, Part 1: Environmental Assessment (excluding Ecology) report of the Proposed Swarther Section ES.
- Anticipated effects on wider community areas are not reported on this set of figures, but are instead considered in the Volume 5, Off-Site Highways Works, Part 1 report.
- Given the geographically broad nature of anticipated effects on transport planning, this topic is not addressed on this set of figures, but is instead reported in the Volume 5, Off-Site Highways Works, Part 1 report.
- The findings of the terrestrial and aquatic ecological assessment are not addressed on this set of figures, and are instead reported separately in Volume 5, Off-Site Highways Works, Part 2: Environmental Assessment - Terrestrial and Aquatic Ecology report of the Proposed Swarther Section ES.
- For further detail of the planning application boundary refer to Series 12 of the Planning Application Drawings.

Legend

Highways Works

- Planning Application Boundary
- Road Widening (RW)
- Passing Place (PP)

Environmental Constraints

- Grade II Listed Building
- Viewpoint Location
- Bowland Fringe and Pendle Hill National Character Area
- Area of Outstanding Natural Beauty

Arboriculture Tree Point - RAG Impacts

- Individual tree to be removed
- Individual tree to be retained with protection measures

Arboriculture Tree Group Canopies - RAG Impacts

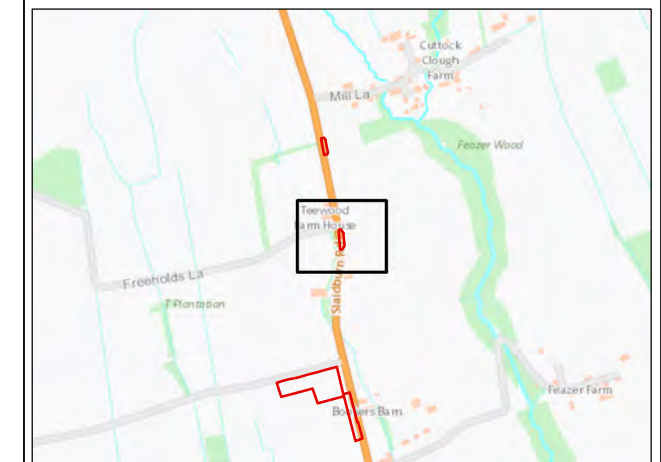
- Tree Group/Woodland/Hedgerow Feature to be Removed
- Tree Group/Woodland/Hedgerow Feature at Risk of Removal but Aiming to Retain
- Tree Group/Woodland/Hedgerow Feature to be Retained with Protection Measures

HIGHWAYS WORKS LOCATION: RW12

Baseline	Likely Significant Effects - Pre-mitigation	Mitigation / Reinstatement
Noise and Vibration	Noise and Vibration	Noise and Vibration
Farm	Likely significant effect from noise and vibration on the residents at a farm 50m from the highway improvement works, during construction and reinstatement.	Implementation of CCoP for control of disruption during construction noise. In addition the screening of particularly noisy activities will be considered.
Landscape and Visual	Landscape and Visual	Landscape and Visual
Farmhouse (T4A/17).	Likely significant effect to the residents (T4A/17) from visual impact during construction.	Land reinstated to original profiles and returned to agricultural use. Reinstatement of grass sward and hedgerows.

Baseline	Likely Significant Effects - Pre-mitigation	Mitigation / Reinstatement
Noise and Vibration	Noise and Vibration	Noise and Vibration
Farm	Likely significant effect from noise and vibration on the residents at a farm 50m from the highway improvement works, during construction and reinstatement.	Implementation of CCoP for control of disruption during construction noise. In addition the screening of particularly noisy activities will be considered.
Landscape and Visual	Landscape and Visual	Landscape and Visual
Farmhouse (T4A/17).	Likely significant effect to the residents (T4A/17) from visual impact during construction.	Land reinstated to original profiles and returned to agricultural use. Reinstatement of grass sward and hedgerows.

Baseline	Likely Significant Effects - Pre-mitigation	Mitigation / Reinstatement
Noise and Vibration	Noise and Vibration	Noise and Vibration
Farm	Likely significant effect from noise and vibration on the residents at a farm 50m from the highway improvement works, during construction and reinstatement.	Implementation of CCoP for control of disruption during construction noise. In addition the screening of particularly noisy activities will be considered.
Landscape and Visual	Landscape and Visual	Landscape and Visual
Farmhouse (T4A/17).	Likely significant effect to the residents (T4A/17) from visual impact during construction.	Land reinstated to original profiles and returned to agricultural use. Reinstatement of grass sward and hedgerows.



01	KB	LT	SH	PLANNING SUBMISSION	6/18/2021
VERSION	AUTH	CHKD	REVD	REASON FOR ISSUE	DATE



UNITED UTILITIES WATER LIMITED
 HAWESWATER AQUEDUCT RESILIENCE PROGRAMME
 MARL HILL AND NEWTON HIGHWAYS WORKS -
 ENVIRONMENTAL ASSESSMENT FIGURES
 PAGE 19 OF 33

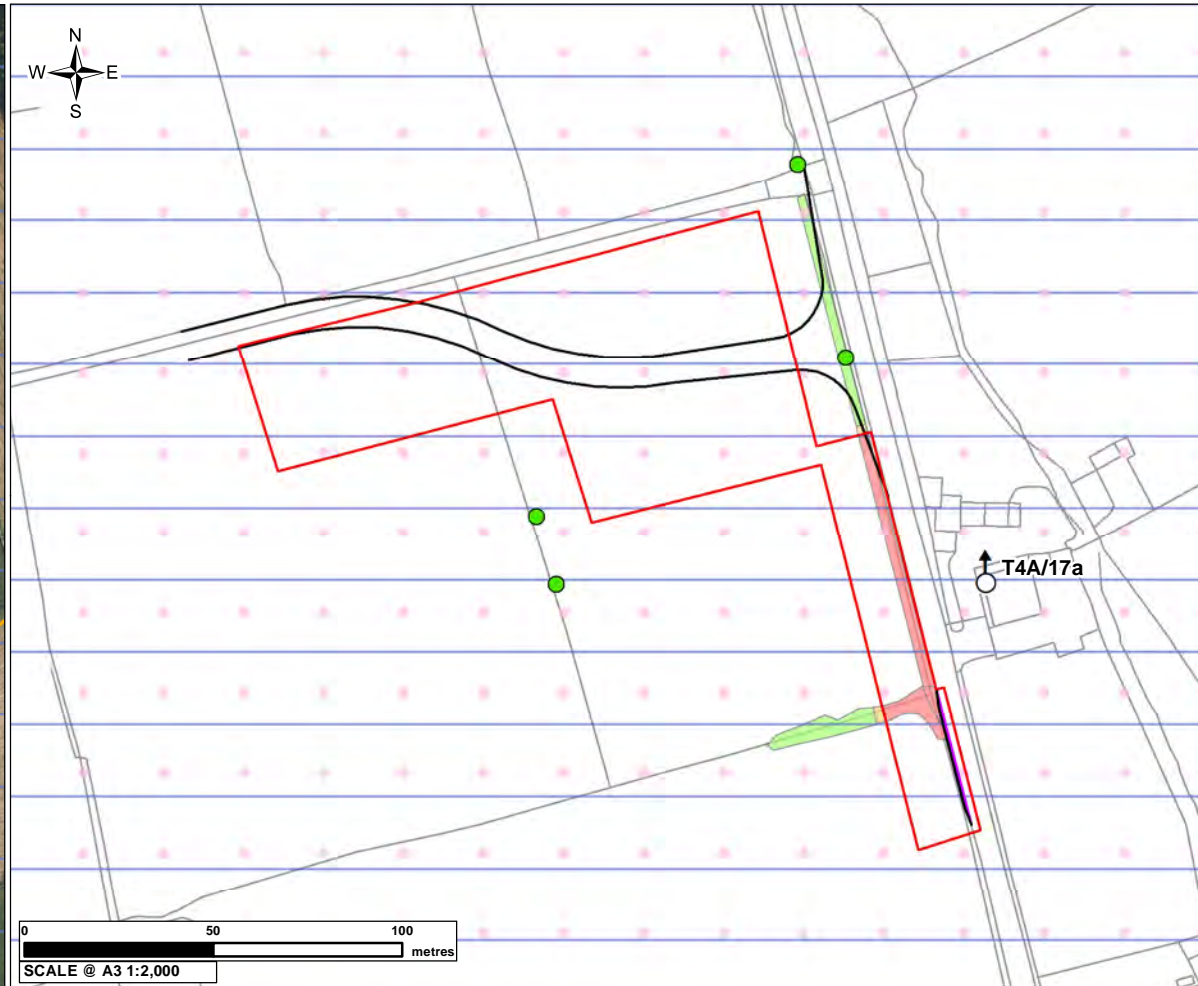
DRAWING NUMBER	SHEET SIZE
RVBC-MH-FIG-V5-P1-002	A3
	REVISION
	01

The copyright of this document, which contains information of a proprietary nature, is vested in United Utilities Water Limited. The content of this document may not be used for purposes other than that for which it has been supplied and may not be reproduced, either wholly or in part, in any way whatsoever. It may not be used by, or its contents divulged to any other person whatsoever without the prior written permission of United Utilities Water Limited. Copyright Acknowledgement: Use of Ordnance Survey map data sanctioned by the controller of H.M. Stationery Office, OS Licence Number 100019326. Crown copyright reserved. Unauthorised production infringes copyright. © Crown copyright and database rights 2020 Ordnance Survey 0100031673. © Historic England 2020. Contains Ordnance Survey data © Crown copyright and database right 2020. Contains OS data © Crown Copyright and database right 2020. Esri, HERE, Garmin, (c) OpenStreetMap contributors, and the GIS user community.

CONTEXT PLAN



HIGHWAYS WORKS AND ENVIRONMENTAL CONSTRAINTS



MARL HILL AND NEWTON-IN-BOWLAND COMPOUNDS HIGHWAYS WORKS

1. The findings of the off-site highways works environmental topic appraisals are only reported on the individual pages of this set of figures for those topics where likely significant effects are considered likely to occur. As such, no text is included on the individual pages of this set of figures for those topics where likely significant effects are not anticipated.
2. Given the geographically broad nature of anticipated effects on arboricultural resources illustrated on this set of figures, no narrative text has been included in the reporting on the figures for this topic. Effects on arboriculture are instead reported in Volume 5, Off-Site Highways Works, Part 1: Environmental Assessment (excluding Ecology) report of the Proposed Swarther Section ES.
3. Anticipated effects on wider community areas are not reported on this set of figures, but are instead considered in the Volume 5, Off-Site Highways Works, Part 1 report.
4. Given the geographically broad nature of anticipated effects on transport planning, this topic is not addressed on this set of figures, but is instead reported in the Volume 5, Off-Site Highways Works, Part 1 report.
5. The findings of the terrestrial and aquatic ecological assessment are not addressed on this set of figures, and are instead reported separately in Volume 5, Off-Site Highways Works, Part 2: Environmental Assessment - Terrestrial and Aquatic Ecology report of the Proposed Swarther Section ES.
6. For further detail of the planning application boundary refer to Series 12 of the Planning Application Drawings.

Legend

Highways Works

- Planning Application Boundary
- Road Widening (RW)
- Passing Place (PP)

Environmental Constraints

- Grade II Listed Building
- Viewpoint Location
- Footpath
- Bowland Fringe and Pendle Hill National Character Area
- Area of Outstanding Natural Beauty

Arboriculture Tree Point - RAG Impacts

- Individual tree to be retained with protection measures
- Arboriculture Tree Group Canopies - RAG Impacts
- Tree Group/Woodland/Hedgerow Feature to be Removed
 - Tree Group/Woodland/Hedgerow Feature at Risk of Removal but Aiming to Retain
 - Tree Group/Woodland/Hedgerow Feature to be Retained with Protection Measures

HIGHWAYS WORKS LOCATION: RW11

Baseline

Noise and Vibration

Farm

Landscape and Visual

Residential property (T4A/17a).

Likely Significant Effects - Pre-mitigation

Noise and Vibration

Likely significant effect from noise and vibration on the residents at a farm 10m from the highway improvement works, during construction and reinstatement.

Landscape and Visual

Likely significant effect to the residents (T4A/17a) from visual impact during construction and operation.

Mitigation / Reinstatement

Noise and Vibration

Implementation of CCoP for control of disruption during construction noise. In addition the screening of particularly noisy activities will be considered.

Landscape and Visual

Tree and shrub planting to replace any removed vegetation. Land reinstated to original profiles and returned to agricultural use. Reinstatement of grass sward and hedgerows.



01	KB	LT	SH	PLANNING SUBMISSION	6/18/2021
VERSION	AUTH	CHKD	REVD	REASON FOR ISSUE	DATE



UNITED UTILITIES WATER LIMITED
 HAWESWATER AQUEDUCT RESILIENCE PROGRAMME
 MARL HILL AND NEWTON HIGHWAYS WORKS -
 ENVIRONMENTAL ASSESSMENT FIGURES
 PAGE 20 OF 33

DRAWING NUMBER	SHEET SIZE
RVBC-MH-FIG-V5-P1-002	A3
	REVISION
	01

The copyright of this document, which contains information of a proprietary nature, is vested in United Utilities Water Limited. The content of this document may not be used for purposes other than that for which it has been supplied and may not be reproduced, either wholly or in part, in any way whatsoever. It may not be used by, or its contents divulged to any other person whatsoever without the prior written permission of United Utilities Water Limited. Copyright Acknowledgement: Use of Ordnance Survey map data sanctioned by the controller of H.M. Stationery Office, OS Licence Number 100019326. Crown copyright reserved. Unauthorised production infringes copyright. © Crown copyright and database rights 2020 Ordnance Survey 0100031673. © Historic England 2020. Contains Ordnance Survey data © Crown copyright and database right 2020. Contains OS data © Crown Copyright and database right 2020. The Historic England GIS Data contained in this material was obtained on 07/08/2020. The most publicly available up to date Historic England GIS Data can be obtained from HistoricEngland.org.uk © Natural England copyright. Contains Ordnance Survey data © Crown copyright and database right 2020. Contains OS data © Crown Copyright and database right 2020. Esri, HERE, Garmin, (c) OpenStreetMap contributors, and the GIS user community.

CONTEXT PLAN



SCALE @ A3 1:2,000

HIGHWAYS WORKS AND ENVIRONMENTAL CONSTRAINTS



SCALE @ A3 1:1,000

MARL HILL AND NEWTON-IN-BOWLAND COMPOUNDS HIGHWAYS WORKS

1. The findings of the off-site highways works environmental topic appraisals are only reported on the individual pages of this set of figures for those topics where likely significant effects are considered likely to occur. As such, no text is included on the individual pages of this set of figures for those topics where likely significant effects are not anticipated.
2. Given the geographically broad nature of anticipated effects on arboricultural resources illustrated on this set of figures, no narrative text has been included in the reporting on the figures for this topic. Effects on arboriculture are instead reported in Volume 5, Off-Site Highways Works, Part 1: Environmental Assessment (excluding Ecology) report of the Proposed Swarther Section ES.
3. Anticipated effects on wider community areas are not reported on this set of figures, but are instead considered in the Volume 5, Off-Site Highways Works, Part 1 report.
4. Given the geographically broad nature of anticipated effects on transport planning, this topic is not addressed on this set of figures, but is instead reported in the Volume 5, Off-Site Highways Works, Part 1 report.
5. The findings of the terrestrial and aquatic ecological assessment are not addressed on this set of figures, and are instead reported separately in Volume 5, Off-Site Highways Works, Part 2: Environmental Assessment - Terrestrial and Aquatic Ecology report of the Proposed Swarther Section ES.
6. For further detail of the planning application boundary refer to Series 12 of the Planning Application Drawings.

Legend

- Highways Works**
- Planning Application Boundary
 - Road Widening (RW)
 - Passing Place (PP)
- Environmental Constraints**
- Footpath
 - Bowland Fringe and Pendle Hill National Character Area
 - Area of Outstanding Natural Beauty
- Arboriculture Tree Point - RAG Impacts**
- Individual tree at risk of removal aiming to retain
 - Individual tree to be retained with protection measures
- Arboriculture Tree Group Canopies - RAG Impacts**
- Tree Group/Woodland/Hedgerow Feature to be Removed
 - Tree Group/Woodland/Hedgerow Feature at Risk of Removal but Aiming to Retain
 - Tree Group/Woodland/Hedgerow Feature to be Retained with Protection Measures

HIGHWAYS WORKS LOCATION: RW10

Baseline

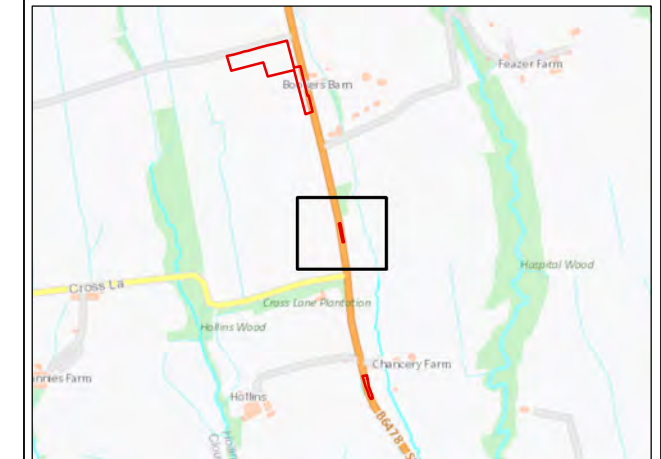
This reporting sheet shows baseline environmental features, designations and assets which have been considered in the environmental assessment process. Accounting for the topic reporting exclusions described in the 'Notes' section of this sheet (which are instead reported in the Volume 5, Off-Site Highways Works, Part 1 and Part 2 reports), none of these features, when screened against the predicted impacts associated with the proposed off-site highways works using the same methodology described in Volume 2, is anticipated to give rise to likely significant effects.

Likely Significant Effects - Pre-mitigation

No likely significant effects.

Mitigation / Reinstatement

No mitigation required.



01	KB	LT	SH	PLANNING SUBMISSION	6/18/2021
VERSION	AUTH	CHKD	REVD	REASON FOR ISSUE	DATE



UNITED UTILITIES WATER LIMITED
 HAWESWATER AQUEDUCT RESILIENCE PROGRAMME
 MARL HILL AND NEWTON HIGHWAYS WORKS -
 ENVIRONMENTAL ASSESSMENT FIGURES
 PAGE 21 OF 33

DRAWING NUMBER	SHEET SIZE
RVBC-MH-FIG-V5-P1-002	A3
	REVISION
	01

CONTEXT PLAN



HIGHWAYS WORKS AND ENVIRONMENTAL CONSTRAINTS



MARL HILL AND NEWTON-IN-BOWLAND COMPOUNDS HIGHWAYS WORKS

1. The findings of the off-site highways works environmental topic appraisals are only reported on the individual pages of this set of figures for those topics where likely significant effects are considered likely to occur. As such, no text is included on the individual pages of this set of figures for those topics where likely significant effects are not anticipated.
2. Given the geographically broad nature of anticipated effects on arboricultural resources illustrated on this set of figures, no narrative text has been included in the reporting on the figures for this topic. Effects on arboriculture are instead reported in Volume 5, Off-Site Highways Works, Part 1: Environmental Assessment (excluding Ecology) report of the Proposed Swarther Section ES.
3. Anticipated effects on wider community areas are not reported on this set of figures, but are instead considered in the Volume 5, Off-Site Highways Works, Part 1 report.
4. Given the geographically broad nature of anticipated effects on transport planning, this topic is not addressed on this set of figures, but is instead reported in the Volume 5, Off-Site Highways Works, Part 1 report.
5. The findings of the terrestrial and aquatic ecological assessment are not addressed on this set of figures, and are instead reported separately in Volume 5, Off-Site Highways Works, Part 2: Environmental Assessment - Terrestrial and Aquatic Ecology report of the Proposed Swarther Section ES.
6. For further detail of the planning application boundary refer to Series 12 of the Planning Application Drawings.

Legend

Highways Works

Planning Application Boundary

Road Widening (RW)

Passing Place (PP)

Environmental Constraints

Viewpoint Location

Bowland Fringe and Pendle Hill National Character Area

Area of Outstanding Natural Beauty

Arboriculture Tree Point - RAG Impacts

Individual tree to be retained with protection measures

Arboriculture Tree Group Canopies - RAG Impacts

Tree Group/Woodland/Hedgerow Feature to be Removed

Tree Group/Woodland/Hedgerow Feature at Risk of Removal but Aiming to Retain

Tree Group/Woodland/Hedgerow Feature to be Retained with Protection Measures

HIGHWAYS WORKS LOCATION: RW09

Baseline

Noise and Vibration

Residential properties.

Landscape and Visual

Farm (T4A/20b).

Likely Significant Effects - Pre-mitigation

Noise and Vibration

Likely significant effect from noise and vibration on the residents 30m from the highway improvement works, during construction and reinstatement.

Landscape and Visual

Likely significant effect to the residents of the farm (T4A/20b) from visual impact during construction.

Mitigation / Reinstatement

Noise and Vibration

Implementation of CCoP for control of disruption during construction noise. In addition the screening of particularly noisy activities will be considered.

Landscape and Visual

Tree and shrub planting to replace any removed vegetation. Land reinstated to original profiles and returned to agricultural use. Reinstatement of grass sward and hedgerows.



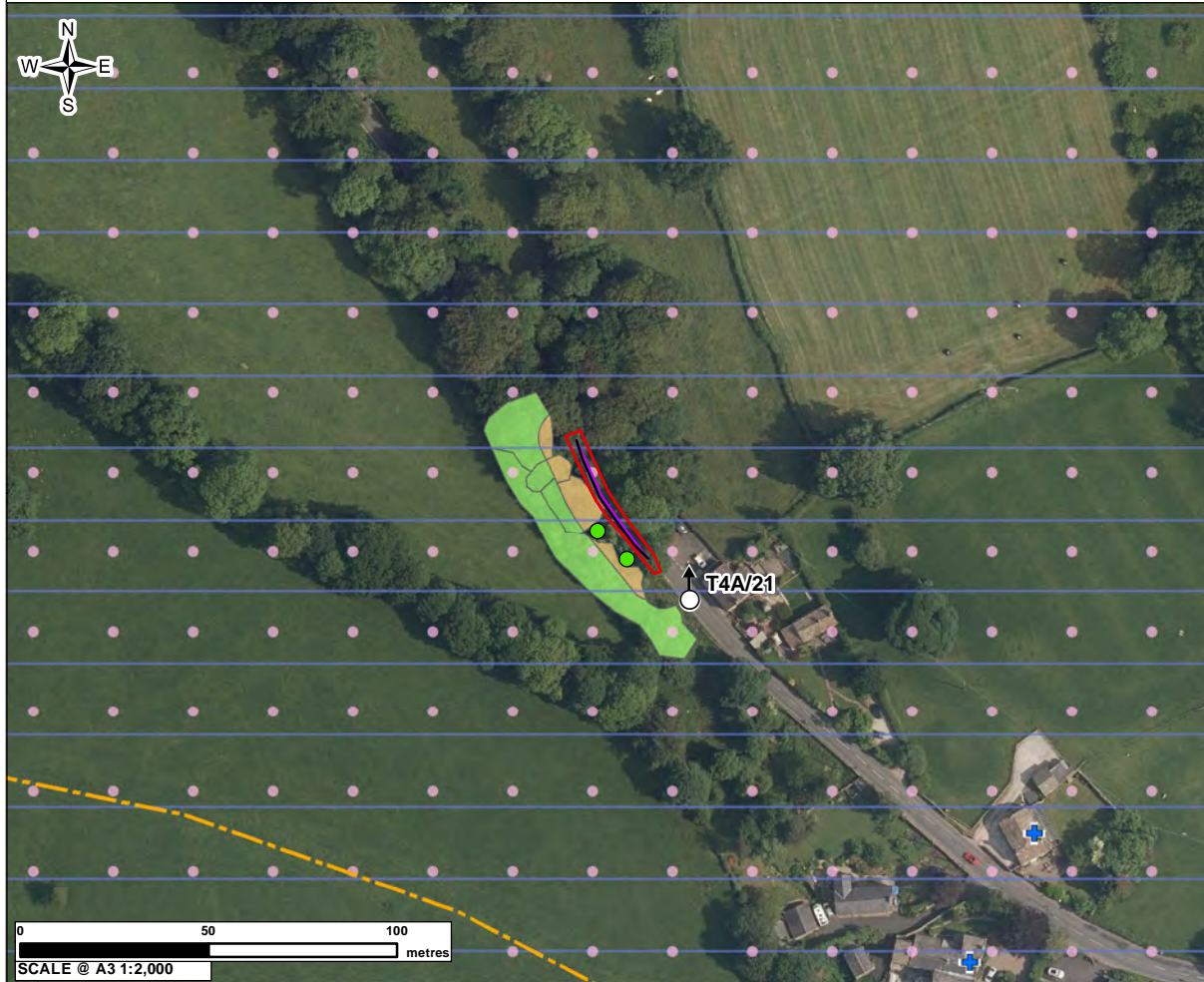
01	KB	LT	SH	PLANNING SUBMISSION	6/18/2021
VERSION	AUTH	CHKD	REVD	REASON FOR ISSUE	DATE



UNITED UTILITIES WATER LIMITED
HAWSWATER AQUEDUCT RESILIENCE PROGRAMME
MARL HILL AND NEWTON HIGHWAYS WORKS -
ENVIRONMENTAL ASSESSMENT FIGURES
PAGE 22 OF 33

DRAWING NUMBER	SHEET SIZE
RVBC-MH-FIG-V5-P1-002	A3
	REVISION
	01

CONTEXT PLAN



HIGHWAYS WORKS AND ENVIRONMENTAL CONSTRAINTS



MARL HILL AND NEWTON-IN-BOWLAND COMPOUNDS HIGHWAYS WORKS

1. The findings of the off-site highways works environmental topic appraisals are only reported on the individual pages of this set of figures for those topics where likely significant effects are considered likely to occur. As such, no text is included on the individual pages of this set of figures for those topics where likely significant effects are not anticipated.
2. Given the geographically broad nature of anticipated effects on arboricultural resources illustrated on this set of figures, no narrative text has been included in the reporting on the figures for this topic. Effects on arboriculture are instead reported in Volume 5, Off-Site Highways Works, Part 1: Environmental Assessment (excluding Ecology) report of the Proposed Swarther Section ES.
3. Anticipated effects on wider community areas are not reported on this set of figures, but are instead considered in the Volume 5, Off-Site Highways Works, Part 1 report.
4. Given the geographically broad nature of anticipated effects on transport planning, this topic is not addressed on this set of figures, but is instead reported in the Volume 5, Off-Site Highways Works, Part 1 report.
5. The findings of the terrestrial and aquatic ecological assessment are not addressed on this set of figures, and are instead reported separately in Volume 5, Off-Site Highways Works, Part 2: Environmental Assessment - Terrestrial and Aquatic Ecology report of the Proposed Swarther Section ES.
6. For further detail of the planning application boundary refer to Series 12 of the Planning Application Drawings.

Legend

- Highways Works**
- Planning Application Boundary
 - Road Widening (RW)
 - Passing Place (PP)
- Environmental Constraints**
- Grade II Listed Building
 - Viewpoint Location
 - Footpath
 - Bowland Fringe and Pendle Hill National Character Area
 - Area of Outstanding Natural Beauty
- Arboriculture Tree Point - RAG Impacts**
- Individual tree to be retained with protection measures
- Arboriculture Tree Group Canopies - RAG Impacts**
- Tree Group/Woodland/Hedgerow Feature to be Removed
 - Tree Group/Woodland/Hedgerow Feature at Risk of Removal but Aiming to Retain
 - Tree Group/Woodland/Hedgerow Feature to be Retained with Protection Measures

HIGHWAYS WORKS LOCATION: RW08

Baseline

Noise and Vibration
Residential property and settlement of Waddington.

Landscape and Visual
Residential property (T4A/21).

Likely Significant Effects - Pre-mitigation

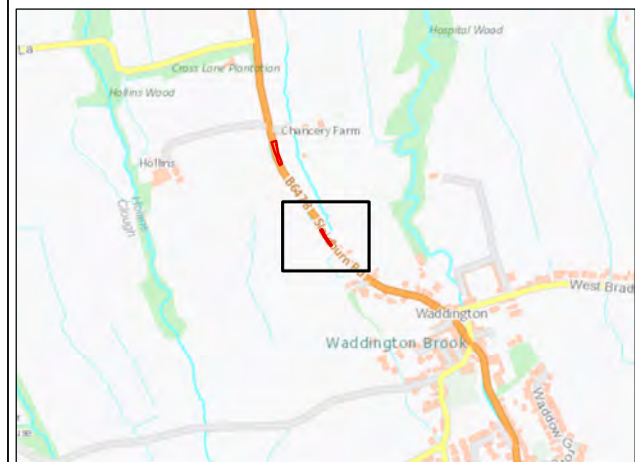
Noise and Vibration
Likely significant effect from noise and vibration on the residents of Waddington 20m from the highway improvement works, during construction and reinstatement.

Landscape and Visual
Likely significant effect to the residents (T4A/21) from visual impact during construction.

Mitigation / Reinstatement

Noise and Vibration
Implementation of CCoP for control of disruption during construction noise. In addition the screening of particularly noisy activities will be considered.

Landscape and Visual
Tree and shrub planting to replace any removed vegetation. Land reinstated to original profiles and returned to agricultural use. Reinstatement of grass sward.



01	KB	LT	SH	PLANNING SUBMISSION	6/18/2021
VERSION	AUTH	CHKD	REVD	REASON FOR ISSUE	DATE



UNITED UTILITIES WATER LIMITED
HAWESWATER AQUEDUCT RESILIENCE PROGRAMME
MARL HILL AND NEWTON HIGHWAYS WORKS -
ENVIRONMENTAL ASSESSMENT FIGURES
PAGE 23 OF 33

DRAWING NUMBER	SHEET SIZE
RVBC-MH-FIG-V5-P1-002	A3
	REVISION
	01

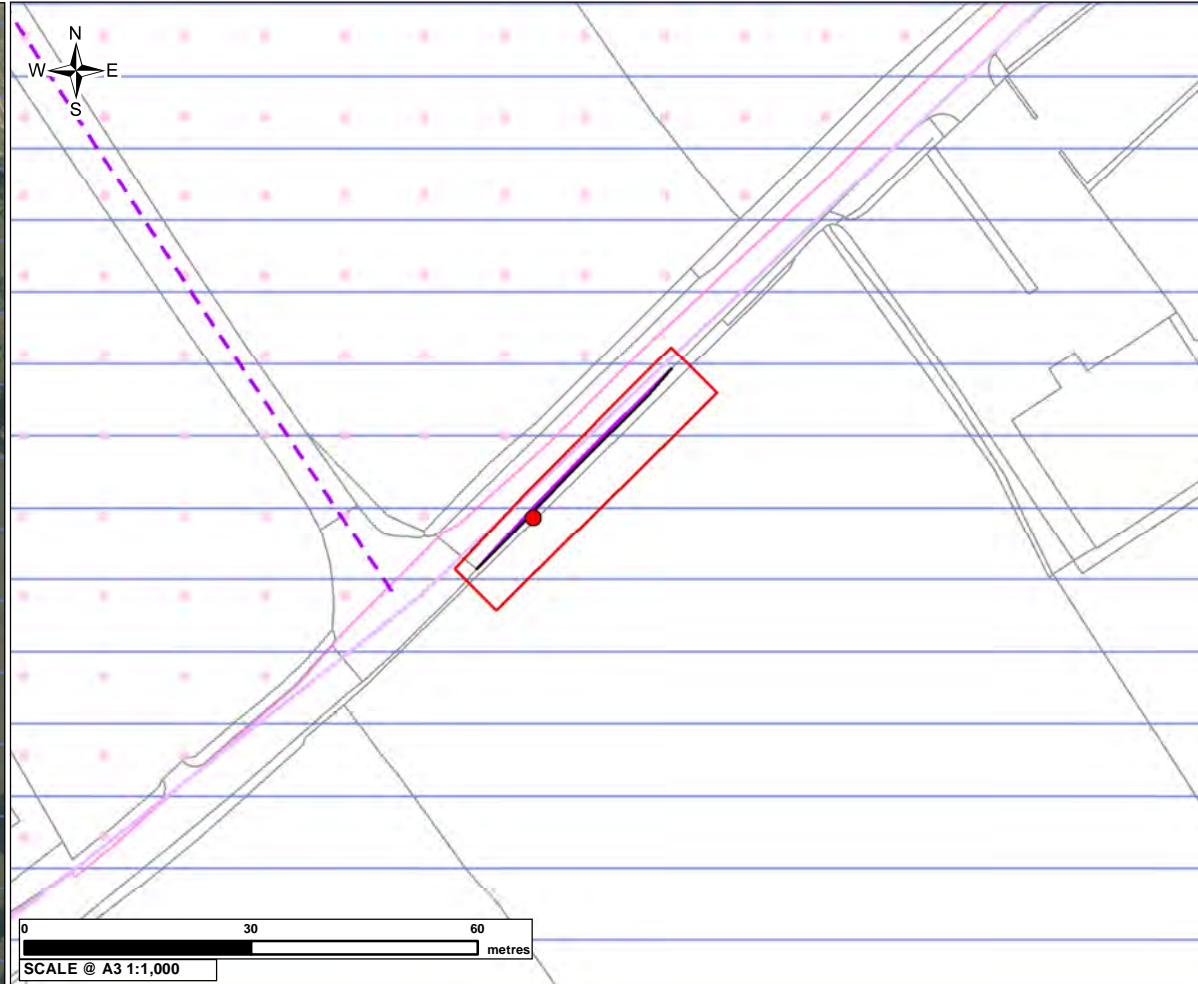
The copyright of this document, which contains information of a proprietary nature, is vested in United Utilities Water Limited. The content of this document may not be used for purposes other than that for which it has been supplied and may not be reproduced, either wholly or in part, in any way whatsoever. It may not be used by, or its contents divulged to any other person whatsoever without the prior written permission of United Utilities Water Limited. Copyright Acknowledgement: Use of Ordnance Survey map data sanctioned by the controller of H.M. Stationery Office, OS Licence Number 100019326. Crown copyright reserved. Unauthorised production infringes copyright. © Crown copyright and database rights 2020 Ordnance Survey 0100031673. © Historic England 2020. Contains Ordnance Survey data © Crown copyright and database right 2020. Contains OS data © Crown Copyright and database right 2020. Esri, HERE, Garmin, (c) OpenStreetMap contributors, and the GIS user community.

CONTEXT PLAN



SCALE @ A3 1:2,000

HIGHWAYS WORKS AND ENVIRONMENTAL CONSTRAINTS



SCALE @ A3 1:1,000

MARL HILL AND NEWTON-IN-BOWLAND COMPOUNDS HIGHWAYS WORKS

1. The findings of the off-site highways works environmental topic appraisals are only reported on the individual pages of this set of figures for those topics where likely significant effects are considered likely to occur. As such, no text is included on the individual pages of this set of figures for those topics where likely significant effects are not anticipated.
2. Given the geographically broad nature of anticipated effects on arboricultural resources illustrated on this set of figures, no narrative text has been included in the reporting on the figures for this topic. Effects on arboriculture are instead reported in Volume 5, Off-Site Highways Works, Part 1: Environmental Assessment (excluding Ecology) report of the Proposed Swarther Section ES.
3. Anticipated effects on wider community areas are not reported on this set of figures, but are instead considered in the Volume 5, Off-Site Highways Works, Part 1 report.
4. Given the geographically broad nature of anticipated effects on transport planning, this topic is not addressed on this set of figures, but is instead reported in the Volume 5, Off-Site Highways Works, Part 1 report.
5. The findings of the terrestrial and aquatic ecological assessment are not addressed on this set of figures, and are instead reported separately in Volume 5, Off-Site Highways Works, Part 2: Environmental Assessment - Terrestrial and Aquatic Ecology report of the Proposed Swarther Section ES.
6. For further detail of the planning application boundary refer to Series 12 of the Planning Application Drawings.

Legend

Highways Works

- Planning Application Boundary
- Road Widening (RW)
- Passing Place (PP)

Environmental Constraints

- Bridleway
- National Cycle Network
- Bowland Fringe and Pendle Hill National Character Area
- Area of Outstanding Natural Beauty

Arboriculture Tree Point - RAG Impacts

- Individual tree to be removed

HIGHWAYS WORKS LOCATION: RW07

Baseline

Noise and Vibration

Residential properties.

Likely Significant Effects - Pre-mitigation

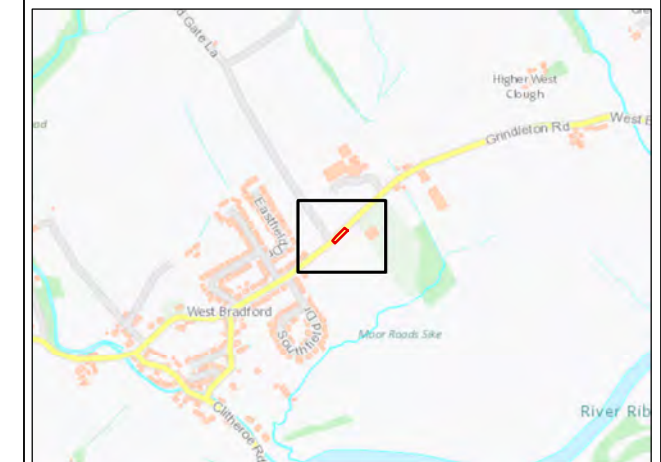
Noise and Vibration

Likely significant effect from noise and vibration on the residents 60m from the highway improvement works, during construction and reinstatement.

Mitigation / Reinstatement

Noise and Vibration

Implementation of CCoP for control of disruption during construction noise. In addition the screening of particularly noisy activities will be considered.



01	KB	LT	SH	PLANNING SUBMISSION	6/18/2021
VERSION	AUTH	CHKD	REVD	REASON FOR ISSUE	DATE



UNITED UTILITIES WATER LIMITED
HAWESWATER AQUEDUCT RESILIENCE PROGRAMME
MARL HILL AND NEWTON HIGHWAYS WORKS -
ENVIRONMENTAL ASSESSMENT FIGURES
PAGE 24 OF 33

DRAWING NUMBER	SHEET SIZE
RVBC-MH-FIG-V5-P1-002	A3
	REVISION
	01

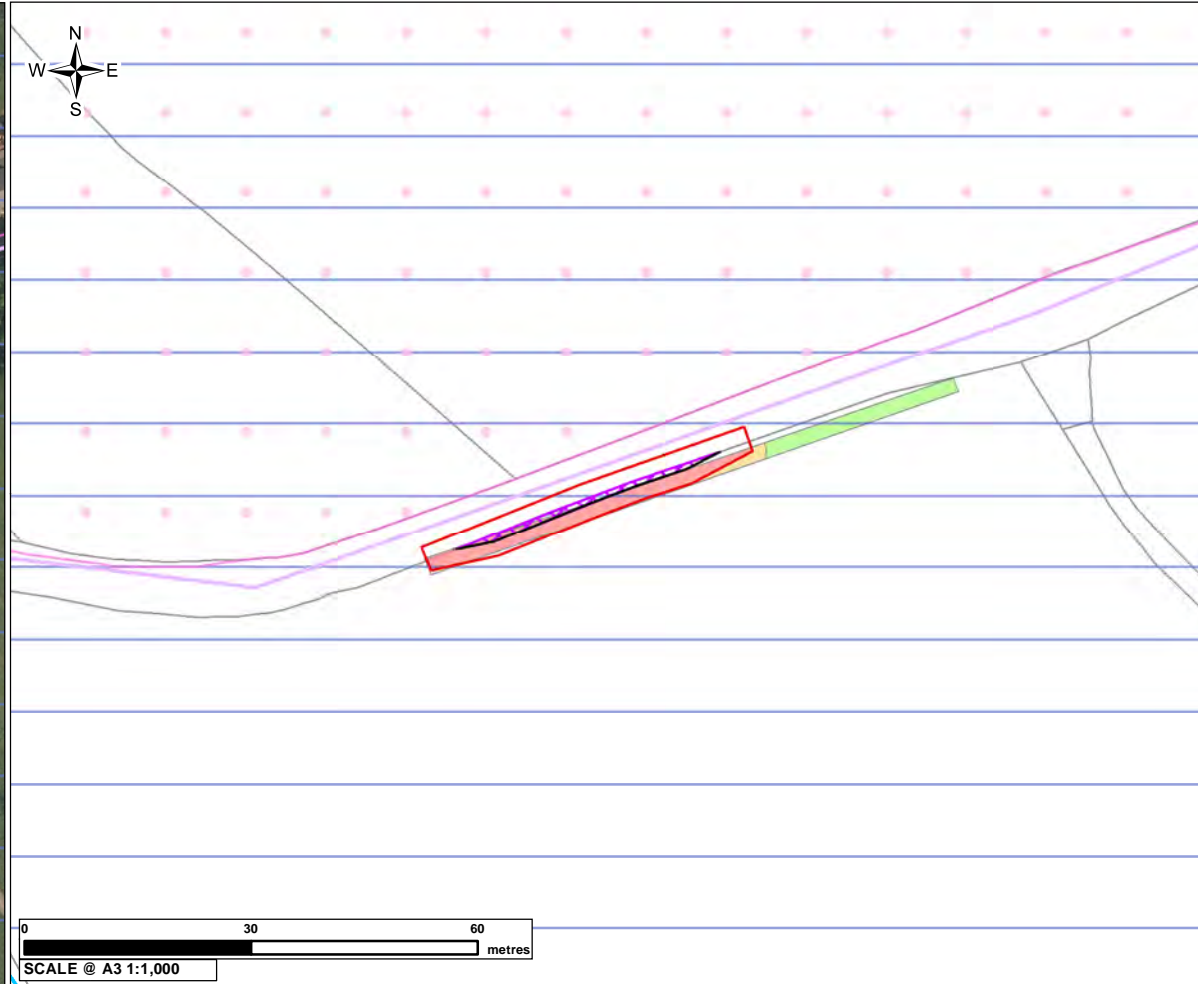
The copyright of this document, which contains information of a proprietary nature, is vested in United Utilities Water Limited. The content of this document may not be used for purposes other than that for which it has been supplied and may not be reproduced, either wholly or in part, in any way whatsoever. It may not be used by, or its contents divulged to any other person whatsoever without the prior written permission of United Utilities Water Limited. Copyright Acknowledgement: Use of Ordnance Survey map data sanctioned by the controller of H.M. Stationery Office, OS Licence Number 100019326. Crown copyright reserved. Unauthorised production infringes copyright. © Crown copyright and database rights 2020 Ordnance Survey 0100031673. © Historic England 2020. Contains Ordnance Survey data © Crown copyright and database right 2020. Contains Ordnance Survey data © Crown copyright and database right 2020. Contains OS data © Crown Copyright and database right 2020. Esri, HERE, Garmin, (c) OpenStreetMap contributors, and the GIS user community.

CONTEXT PLAN



SCALE @ A3 1:2,000

HIGHWAYS WORKS AND ENVIRONMENTAL CONSTRAINTS



SCALE @ A3 1:1,000

MARL HILL AND NEWTON-IN-BOWLAND COMPOUNDS HIGHWAYS WORKS

1. The findings of the off-site highways works environmental topic appraisals are only reported on the individual pages of this set of figures for those topics where likely significant effects are considered likely to occur. As such, no text is included on the individual pages of this set of figures for those topics where likely significant effects are not anticipated.
2. Given the geographically broad nature of anticipated effects on arboricultural resources illustrated on this set of figures, no narrative text has been included in the reporting on the figures for this topic. Effects on arboriculture are instead reported in Volume 5, Off-Site Highways Works, Part 1: Environmental Assessment (excluding Ecology) report of the Proposed Swarther Section ES.
3. Anticipated effects on wider community areas are not reported on this set of figures, but are instead considered in the Volume 5, Off-Site Highways Works, Part 1 report.
4. Given the geographically broad nature of anticipated effects on transport planning, this topic is not addressed on this set of figures, but is instead reported in the Volume 5, Off-Site Highways Works, Part 1 report.
5. The findings of the terrestrial and aquatic ecological assessment are not addressed on this set of figures, and are instead reported separately in Volume 5, Off-Site Highways Works, Part 2: Environmental Assessment - Terrestrial and Aquatic Ecology report of the Proposed Swarther Section ES.
6. For further detail of the planning application boundary refer to Series 12 of the Planning Application Drawings.

Legend

Highways Works

Planning Application Boundary

Road Widening (RW)

Passing Place (PP)

Environmental Constraints

Main River

Bridleway

Footpath

National Cycle Network

Bowland Fringe and Pendle Hill National Character Area

Area of Outstanding Natural Beauty

Arboriculture Tree Group Canopies - RAG Impacts

Tree Group/Woodland/Hedgerow Feature to be Removed

Tree Group/Woodland/Hedgerow Feature at Risk of Removal but Aiming to Retain

Tree Group/Woodland/Hedgerow Feature to be Retained with Protection Measures

HIGHWAYS WORKS LOCATION: RW06

Baseline

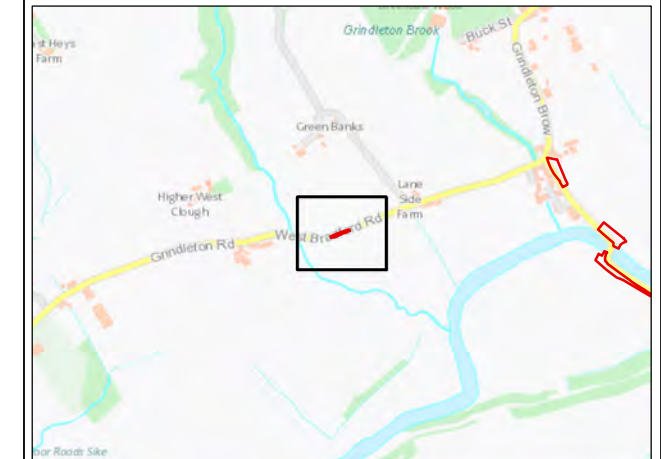
This reporting sheet shows baseline environmental features, designations and assets which have been considered in the environmental assessment process. Accounting for the topic reporting exclusions described in the 'Notes' section of this sheet (which are instead reported in the Volume 5, Off-Site Highways Works, Part 1 and Part 2 reports), none of these features, when screened against the predicted impacts associated with the proposed off-site highways works using the same methodology described in Volume 2, is anticipated to give rise to likely significant effects.

Likely Significant Effects - Pre-mitigation

No likely significant effects.

Mitigation / Reinstatement

No mitigation required.



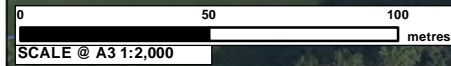
01	KB	LT	SH	PLANNING SUBMISSION	6/18/2021
VERSION	AUTH	CHKD	REVD	REASON FOR ISSUE	DATE



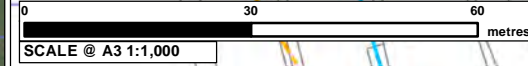
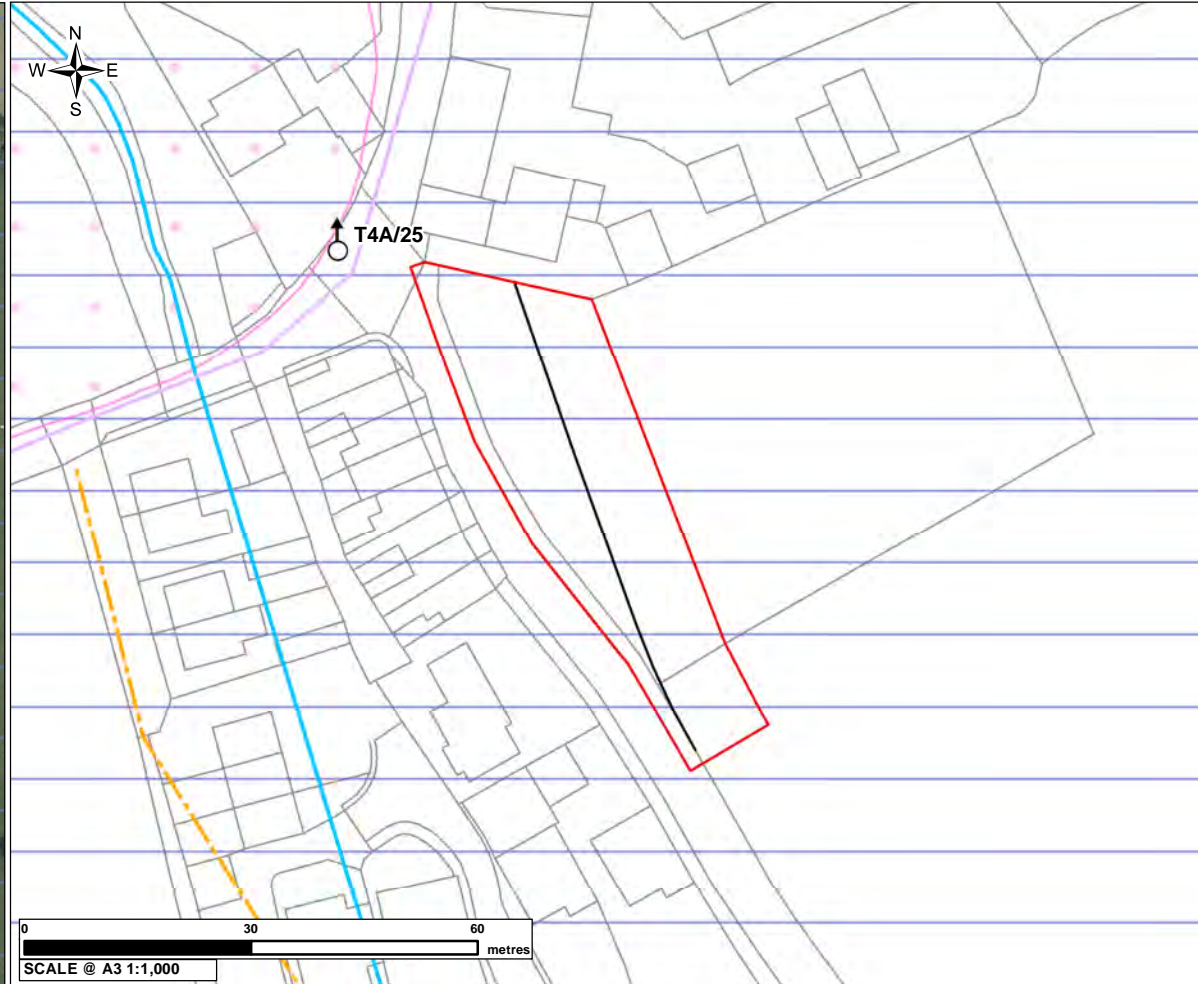
UNITED UTILITIES WATER LIMITED
HAWESWATER AQUEDUCT RESILIENCE PROGRAMME
MARL HILL AND NEWTON HIGHWAYS WORKS -
ENVIRONMENTAL ASSESSMENT FIGURES
PAGE 25 OF 33

DRAWING NUMBER	RVBC-MH-FIG-V5-P1-002	SHEET SIZE	A3
REVISION	01		

CONTEXT PLAN



HIGHWAYS WORKS AND ENVIRONMENTAL CONSTRAINTS



MARL HILL AND NEWTON-IN-BOWLAND COMPOUNDS HIGHWAYS WORKS

- The findings of the off-site highways works environmental topic appraisals are only reported on the individual pages of this set of figures for those topics where likely significant effects are considered likely to occur. As such, no text is included on the individual pages of this set of figures for those topics where likely significant effects are not anticipated.
- Given the geographically broad nature of anticipated effects on arboricultural resources illustrated on this set of figures, no narrative text has been included in the reporting on the figures for this topic. Effects on arboriculture are instead reported in Volume 5, Off-Site Highways Works, Part 1: Environmental Assessment (excluding Ecology) report of the Proposed Swarther Section ES.
- Anticipated effects on wider community areas are not reported on this set of figures, but are instead considered in the Volume 5, Off-Site Highways Works, Part 1 report.
- Given the geographically broad nature of anticipated effects on transport planning, this topic is not addressed on this set of figures, but is instead reported in the Volume 5, Off-Site Highways Works, Part 1 report.
- The findings of the terrestrial and aquatic ecological assessment are not addressed on this set of figures, and are instead reported separately in Volume 5, Off-Site Highways Works, Part 2: Environmental Assessment - Terrestrial and Aquatic Ecology report of the Proposed Swarther Section ES.
- For further detail of the planning application boundary refer to Series 12 of the Planning Application Drawings.

Legend

Highways Works

Planning Application Boundary

Road Widening (RW)

Environmental Constraints

Viewpoint Location

Main River

Footpath

National Cycle Network

Bowland Fringe and Pendle Hill National Character Area

Area of Outstanding Natural Beauty

HIGHWAYS WORKS LOCATION: RW05

Baseline

Noise and Vibration

Residential properties

Landscape and Visual

Community of Grindleton (T4A/25)

Likely Significant Effects - Pre-mitigation

Noise and Vibration

Likely significant effect from noise and vibration on the residents 10m from the highway improvement works, during construction and reinstatement.

Landscape and Visual

Likely significant effect to the community of Grindleton (T4A/25) from visual impact during construction.

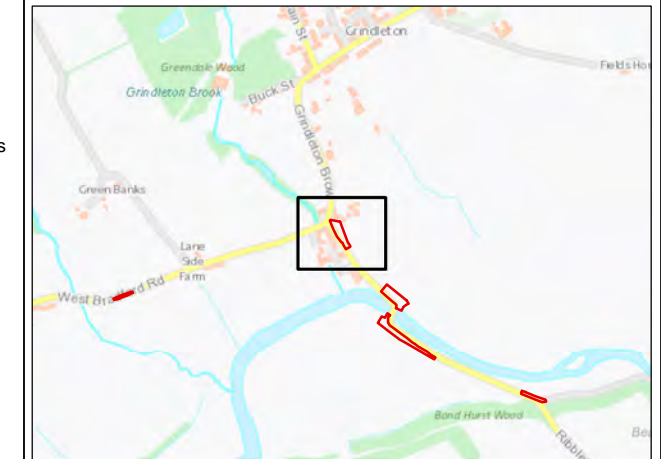
Mitigation / Reinstatement

Noise and Vibration

Implementation of CCoP for control of disruption during construction noise. In addition the screening of particularly noisy activities will be considered.

Landscape and Visual

Tree and shrub planting to replace any removed vegetation. Land reinstated to original profiles and returned to agricultural use. Reinstatement of grass sward and masonry walls.



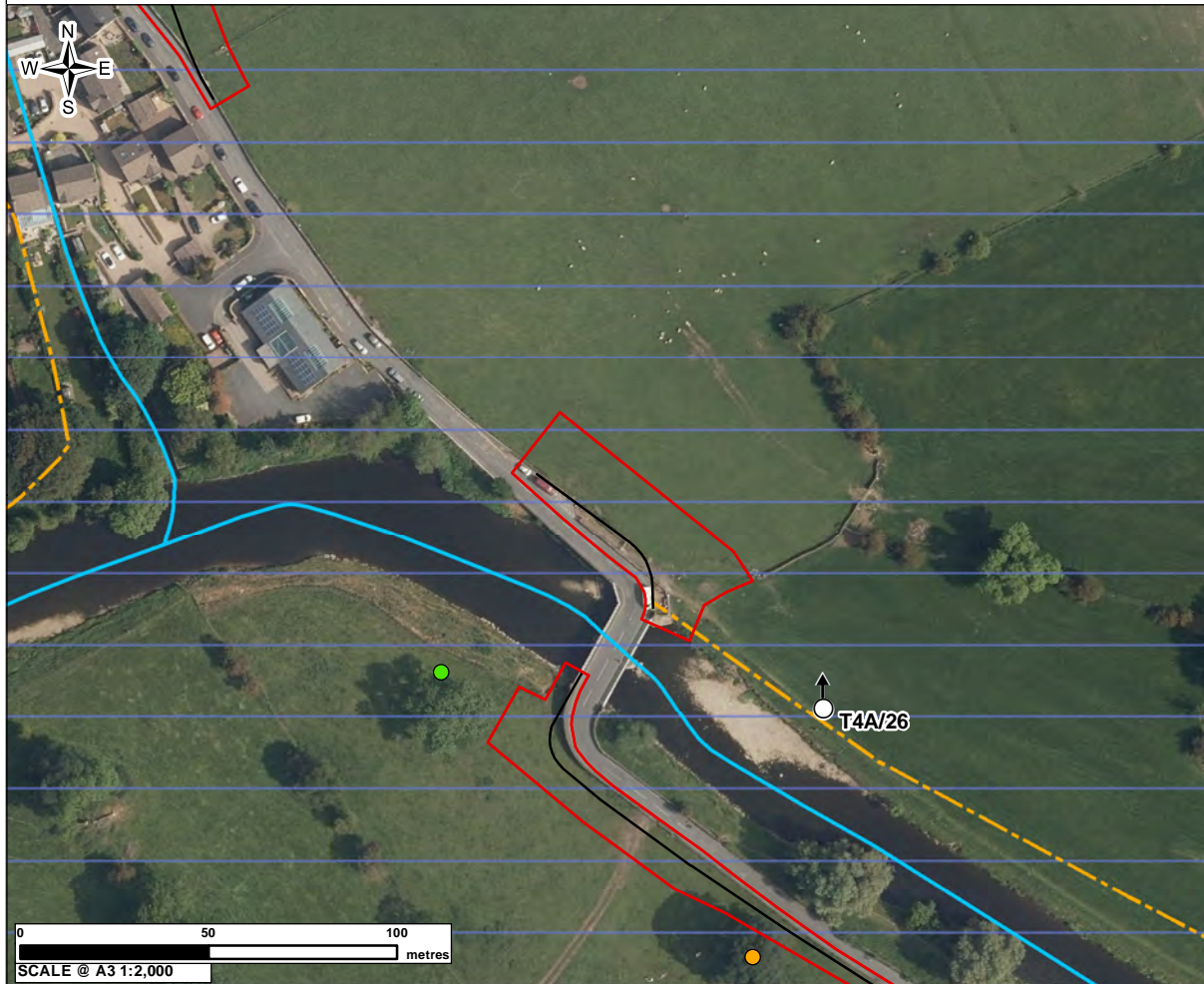
01	KB	LT	SH	PLANNING SUBMISSION	6/18/2021
VERSION	AUTH	CHKD	REVD	REASON FOR ISSUE	DATE



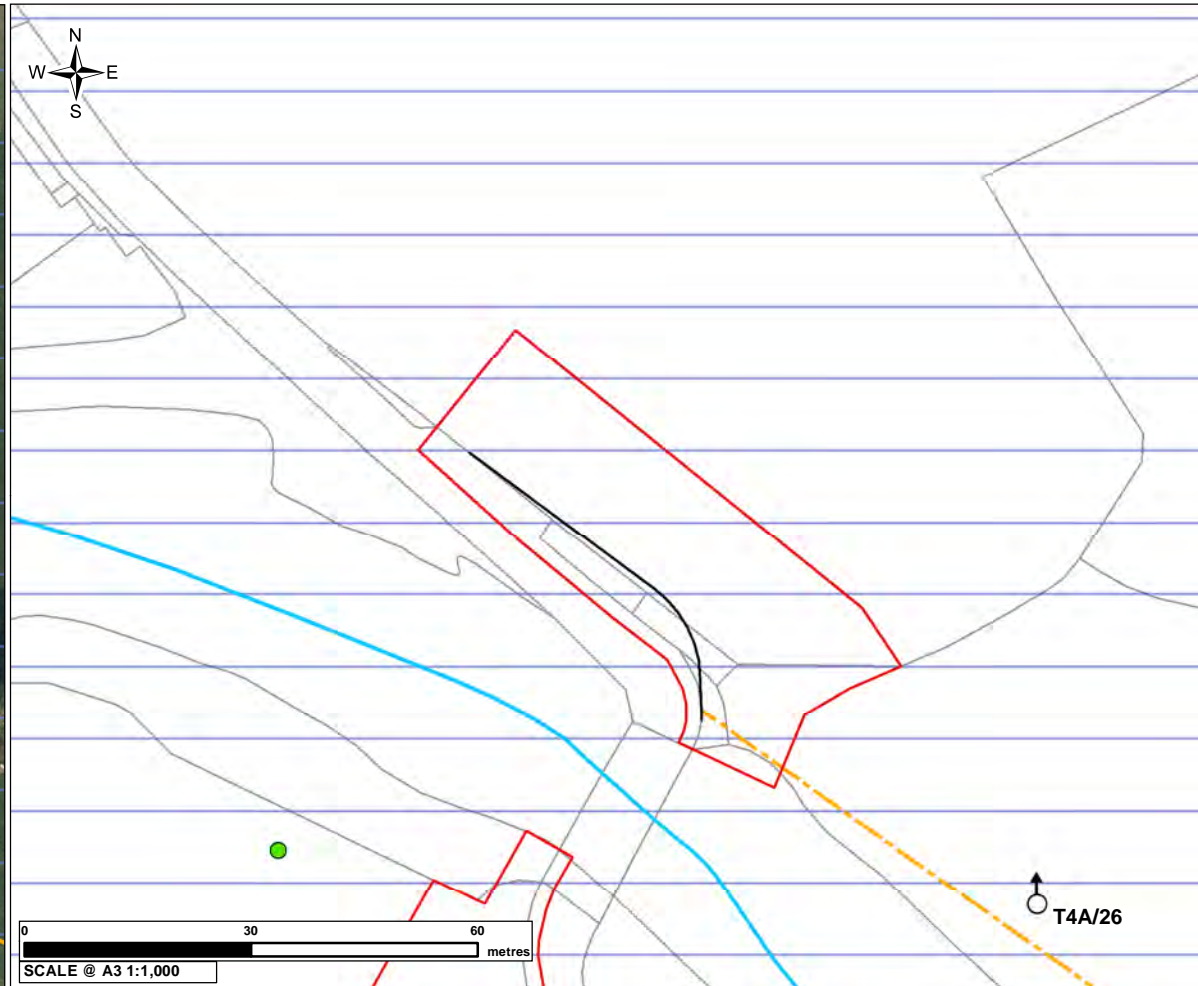
UNITED UTILITIES WATER LIMITED
 HAWESWATER AQUEDUCT RESILIENCE PROGRAMME
 MARL HILL AND NEWTON HIGHWAYS WORKS -
 ENVIRONMENTAL ASSESSMENT FIGURES
 PAGE 26 OF 33

DRAWING NUMBER	SHEET SIZE
RVBC-MH-FIG-V5-P1-002	A3
	REVISION
	01

CONTEXT PLAN



HIGHWAYS WORKS AND ENVIRONMENTAL CONSTRAINTS



MARL HILL AND NEWTON-IN-BOWLAND COMPOUNDS HIGHWAYS WORKS

1. The findings of the off-site highways works environmental topic appraisals are only reported on the individual pages of this set of figures for those topics where likely significant effects are considered likely to occur. As such, no text is included on the individual pages of this set of figures for those topics where likely significant effects are not anticipated.
2. Given the geographically broad nature of anticipated effects on arboricultural resources illustrated on this set of figures, no narrative text has been included in the reporting on the figures for this topic. Effects on arboriculture are instead reported in Volume 5, Off-Site Highways Works, Part 1: Environmental Assessment (excluding Ecology) report of the Proposed Swarther Section ES.
3. Anticipated effects on wider community areas are not reported on this set of figures, but are instead considered in the Volume 5, Off-Site Highways Works, Part 1 report.
4. Given the geographically broad nature of anticipated effects on transport planning, this topic is not addressed on this set of figures, but is instead reported in the Volume 5, Off-Site Highways Works, Part 1 report.
5. The findings of the terrestrial and aquatic ecological assessment are not addressed on this set of figures, and are instead reported separately in Volume 5, Off-Site Highways Works, Part 2: Environmental Assessment - Terrestrial and Aquatic Ecology report of the Proposed Swarther Section ES.
6. For further detail of the planning application boundary refer to Series 12 of the Planning Application Drawings.

Legend

Highways Works

Planning Application Boundary

Road Widening (RW)

Environmental Constraints

Viewpoint Location

Main River

Footpath

Bowland Fringe and Pendle Hill National Character Area

Arboriculture Tree Point - RAG Impacts

Individual tree at risk of removal aiming to retain

Individual tree to be retained with protection measures

HIGHWAYS WORKS LOCATION: RW04

Baseline

Public Access and Recreation

PRoW 3-21-FP 57

Noise and Vibration

Residential property and offices

Landscape and Visual

PRoW 3-21-FP 57 (T4A/26) and the community of Grindleton (T4A/25)

Likely Significant Effects - Pre-mitigation

Public Access and Recreation

Likely significant effect to users of PRoW 3-21-FP 57 due to its diversion.

Noise and Vibration

Likely significant effect to users of PRoW 3-21-FP 57 (T4A/26) and the community of Grindleton (T4A/25) from visual impact during construction.

Landscape and Visual

Likely significant effect from noise and vibration on the residents and office workers 60m from the highway improvement works, during construction and reinstatement.

Mitigation / Reinstatement

Public Access and Recreation

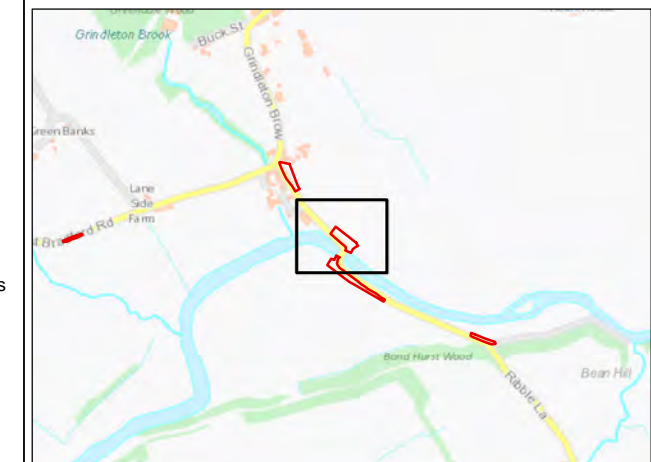
Where diversions are required, they would be for the shortest duration practicable, and reinstated on completion of the works. Implementation of mitigation measures as proposed in the CCoP.

Noise and Vibration

Implementation of CCoP for control of disruption during construction noise. In addition the screening of particularly noisy activities will be considered.

Landscape and Visual

Tree and shrub planting to replace any removed vegetation. Land reinstated to original profiles and returned to agricultural use. Reinstatement of masonry walls and fences.



01	KB	LT	SH	PLANNING SUBMISSION	6/18/2021
VERSION	AUTH	CHKD	REVD	REASON FOR ISSUE	DATE

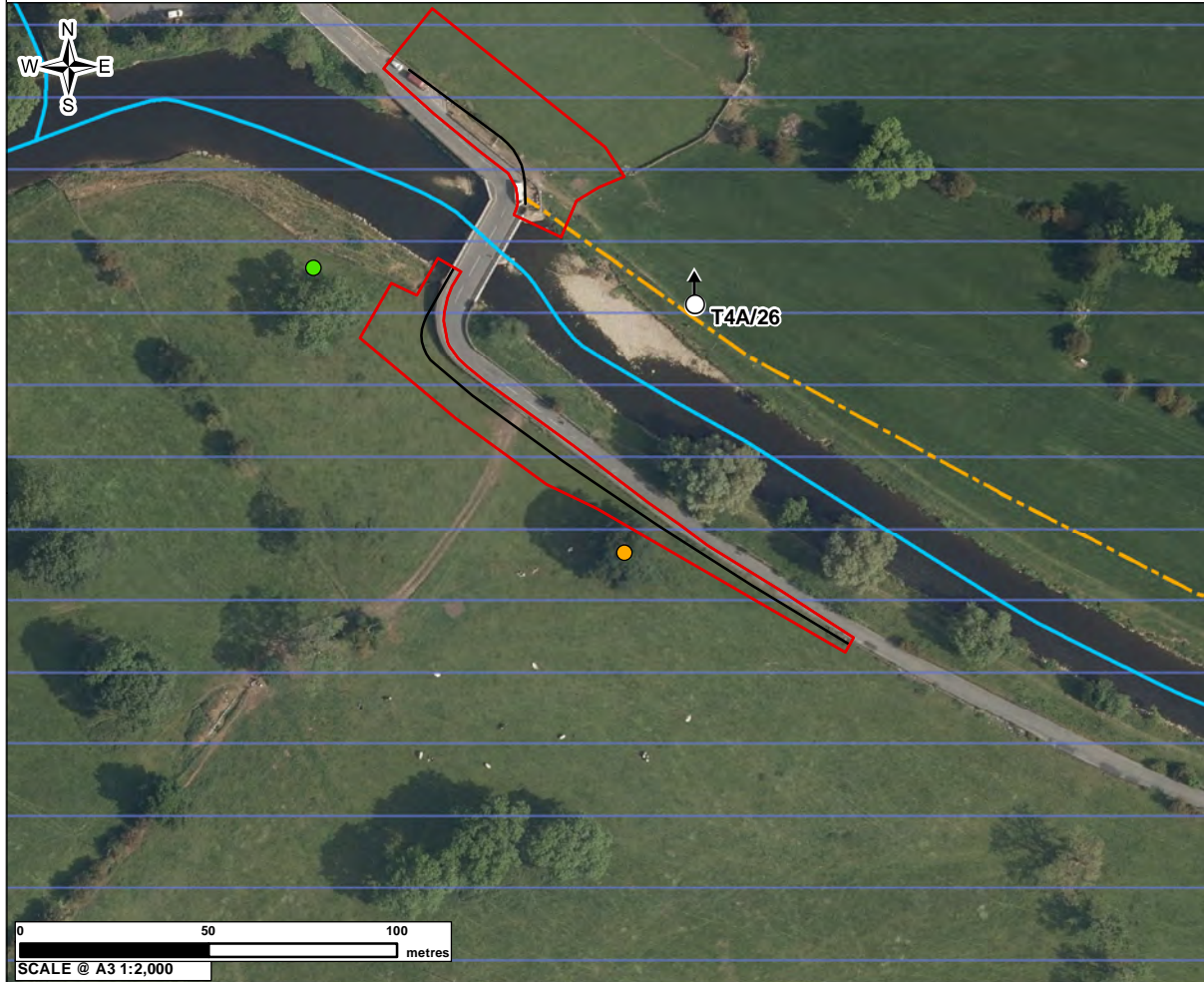


UNITED UTILITIES WATER LIMITED
HAWESWATER AQUEDUCT RESILIENCE PROGRAMME
MARL HILL AND NEWTON HIGHWAYS WORKS -
ENVIRONMENTAL ASSESSMENT FIGURES
PAGE 27 OF 33

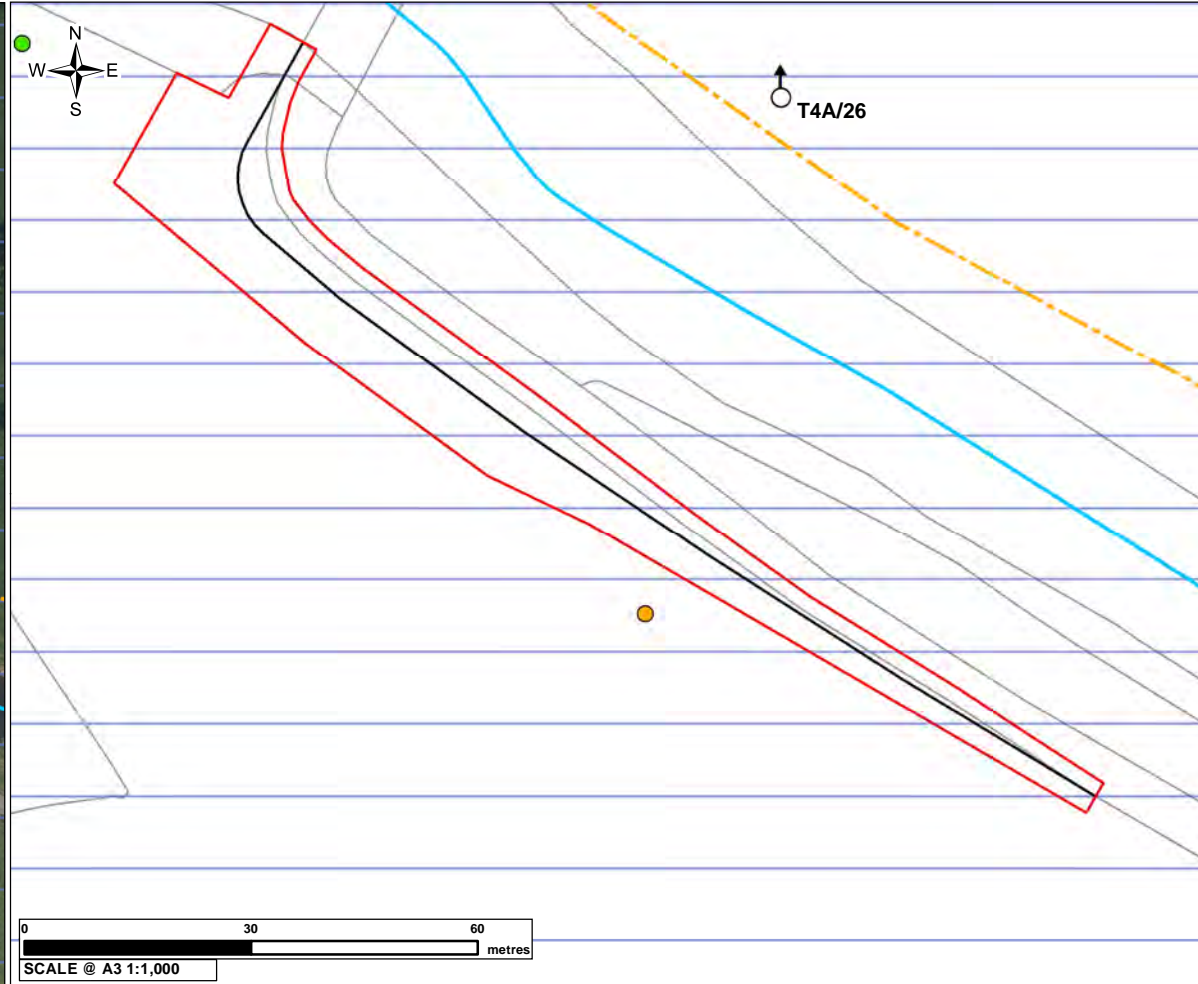
DRAWING NUMBER	SHEET SIZE
RVBC-MH-FIG-V5-P1-002	A3
	REVISION
	01

The copyright of this document, which contains information of a proprietary nature, is vested in United Utilities Water Limited. The content of this document may not be used for purposes other than that for which it has been supplied and may not be reproduced, either wholly or in part, in any way whatsoever. It may not be used by, or its contents divulged to any other person whatsoever without the prior written permission of United Utilities Water Limited. Copyright Acknowledgement: Use of Ordnance Survey map data sanctioned by the controller of H.M. Stationery Office, OS Licence Number 100019326. Crown copyright reserved. Unauthorised production infringes copyright. © Crown copyright and database rights 2020 Ordnance Survey 0100031673. © Historic England 2020. Contains Ordnance Survey data © Crown copyright and database right 2020. Contains OS data © Crown Copyright and database right 2020. Esri, HERE, Garmin, (c) OpenStreetMap contributors, and the GIS user community.

CONTEXT PLAN



HIGHWAYS WORKS AND ENVIRONMENTAL CONSTRAINTS



MARL HILL AND NEWTON-IN-BOWLAND COMPOUNDS HIGHWAYS WORKS

1. The findings of the off-site highways works environmental topic appraisals are only reported on the individual pages of this set of figures for those topics where likely significant effects are considered likely to occur. As such, no text is included on the individual pages of this set of figures for those topics where likely significant effects are not anticipated.
2. Given the geographically broad nature of anticipated effects on arboricultural resources illustrated on this set of figures, no narrative text has been included in the reporting on the figures for this topic. Effects on arboriculture are instead reported in Volume 5, Off-Site Highways Works, Part 1: Environmental Assessment (excluding Ecology) report of the Proposed Swarther Section ES.
3. Anticipated effects on wider community areas are not reported on this set of figures, but are instead considered in the Volume 5, Off-Site Highways Works, Part 1 report.
4. Given the geographically broad nature of anticipated effects on transport planning, this topic is not addressed on this set of figures, but is instead reported in the Volume 5, Off-Site Highways Works, Part 1 report.
5. The findings of the terrestrial and aquatic ecological assessment are not addressed on this set of figures, and are instead reported separately in Volume 5, Off-Site Highways Works, Part 2: Environmental Assessment - Terrestrial and Aquatic Ecology report of the Proposed Swarther Section ES.
6. For further detail of the planning application boundary refer to Series 12 of the Planning Application Drawings.

Legend

Highways Works

Planning Application Boundary

Road Widening (RW)

Environmental Constraints

Viewpoint Location

Main River

Footpath

Bowland Fringe and Pendle Hill National Character Area

Arboriculture Tree Point - RAG Impacts

Individual tree at risk of removal aiming to retain

Individual tree to be retained with protection measures

HIGHWAYS WORKS LOCATION: RW03

Baseline

Landscape and Visual

PRoW 3-11-FP 5 (T4A/28) and 3-21-FP 57 (T3H/26)

Likely Significant Effects - Pre-mitigation

Landscape and Visual

Likely significant effect to users of PRoW 3-11-FP 5 (T4A/28) and 3-21-FP 57 (T3H/26) from visual impact during construction.

Mitigation / Reinstatement

Landscape and Visual

Tree and shrub planting to replace removed vegetation. Land reinstated to original profiles and returned to agricultural use. Reinstatement of grass sward, masonry walls and fences.



01	KB	LT	SH	PLANNING SUBMISSION	6/18/2021
VERSION	AUTH	CHKD	REVD	REASON FOR ISSUE	DATE



UNITED UTILITIES WATER LIMITED
HAWESWATER AQUEDUCT RESILIENCE PROGRAMME
MARL HILL AND NEWTON HIGHWAYS WORKS -
ENVIRONMENTAL ASSESSMENT FIGURES
PAGE 28 OF 33

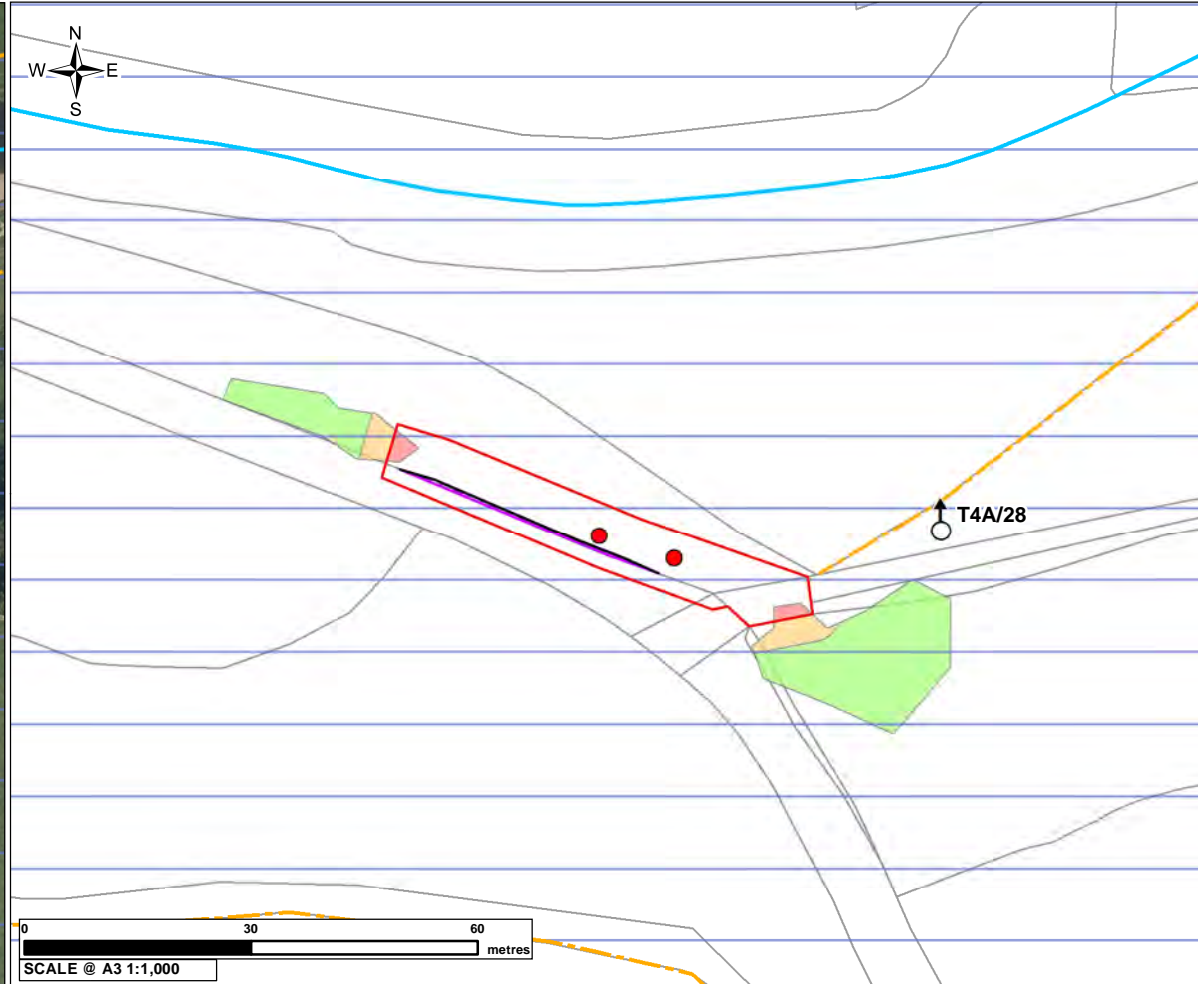
DRAWING NUMBER	RVBC-MH-FIG-V5-P1-002	SHEET SIZE	A3
REVISION	01		

The copyright of this document, which contains information of a proprietary nature, is vested in United Utilities Water Limited. The content of this document may not be used for purposes other than that for which it has been supplied and may not be reproduced, either wholly or in part, in any way whatsoever. It may not be used by, or its contents divulged to any other person whatsoever without the prior written permission of United Utilities Water Limited. Copyright Acknowledgement: Use of Ordnance Survey map data sanctioned by the controller of H.M. Stationery Office, OS Licence Number 100019326. Crown copyright reserved. Unauthorised production infringes copyright. © Crown copyright and database rights 2020 Ordnance Survey 0100031673. © Historic England 2020. Contains Ordnance Survey data © Crown copyright and database right 2020. Contains OS data © Crown Copyright and database right 2020. The Historic England GIS Data contained in this material was obtained on 07/08/2020. The most publicly available up to date Historic England GIS Data can be obtained from HistoricEngland.org.uk © Natural England copyright. Contains Ordnance Survey data © Crown copyright and database right 2020. Contains OS data © Crown Copyright and database right 2020. Esri, HERE, Garmin, (c) OpenStreetMap contributors, and the GIS user community.

CONTEXT PLAN



HIGHWAYS WORKS AND ENVIRONMENTAL CONSTRAINTS



MARL HILL AND NEWTON-IN-BOWLAND COMPOUNDS HIGHWAYS WORKS

1. The findings of the off-site highways works environmental topic appraisals are only reported on the individual pages of this set of figures for those topics where likely significant effects are considered likely to occur. As such, no text is included on the individual pages of this set of figures for those topics where likely significant effects are not anticipated.
2. Given the geographically broad nature of anticipated effects on arboricultural resources illustrated on this set of figures, no narrative text has been included in the reporting on the figures for this topic. Effects on arboriculture are instead reported in Volume 5, Off-Site Highways Works, Part 1: Environmental Assessment (excluding Ecology) report of the Proposed Swarther Section ES.
3. Anticipated effects on wider community areas are not reported on this set of figures, but are instead considered in the Volume 5, Off-Site Highways Works, Part 1 report.
4. Given the geographically broad nature of anticipated effects on transport planning, this topic is not addressed on this set of figures, but is instead reported in the Volume 5, Off-Site Highways Works, Part 1 report.
5. The findings of the terrestrial and aquatic ecological assessment are not addressed on this set of figures, and are instead reported separately in Volume 5, Off-Site Highways Works, Part 2: Environmental Assessment - Terrestrial and Aquatic Ecology report of the Proposed Swarther Section ES.
6. For further detail of the planning application boundary refer to Series 12 of the Planning Application Drawings.

Legend

Highways Works

Planning Application Boundary

Road Widening (RW)

Passing Place (PP)

Environmental Constraints

Viewpoint Location

Main River

Footpath

Bowland Fringe and Pendle Hill National Character Area

Arboriculture Tree Point - RAG Impacts

Individual tree to be removed

Arboriculture Tree Group Canopies - RAG Impacts

Tree Group/Woodland/Hedgerow Feature to be Removed

Tree Group/Woodland/Hedgerow Feature at Risk of Removal but Aiming to Retain

Tree Group/Woodland/Hedgerow Feature to be Retained with Protection Measures

HIGHWAYS WORKS LOCATION: RW02

Baseline

Public Access and Recreation

PRoW 3-11-FP 5

Landscape and Visual

PRoW 3-11-FP 5 (T4A/28)

Likely Significant Effects - Pre-mitigation

Public Access and Recreation

Likely significant effect to users of PRoW 3-11-FP 5 due to its diversion.

Landscape and Visual

Likely significant effect to users of PRoW 3-11-FP 5 (T4A/28) from visual impact during construction.

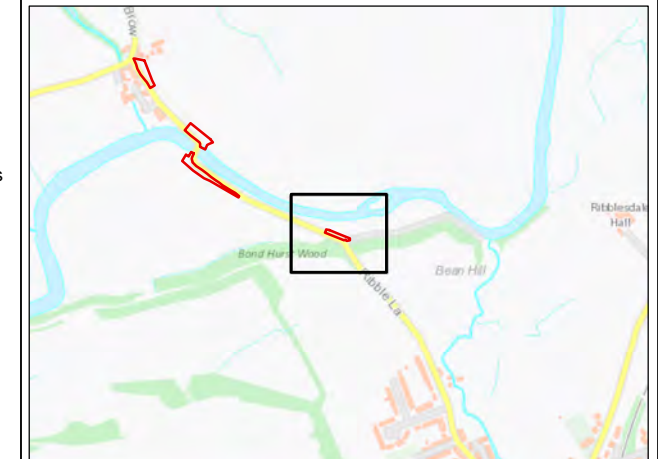
Mitigation / Reinstatement

Public Access and Recreation

Where diversions are required, they would be for the shortest duration practicable, and reinstated on completion of the works. Implementation of mitigation measures as proposed in the CCoP.

Landscape and Visual

Tree and shrub planting to replace any removed vegetation. Land reinstated to original profiles and returned to agricultural use. Reinstatement of grass sward, masonry walls and fences.



01	KB	LT	SH	PLANNING SUBMISSION	6/18/2021
VERSION	AUTH	CHKD	REVD	REASON FOR ISSUE	DATE



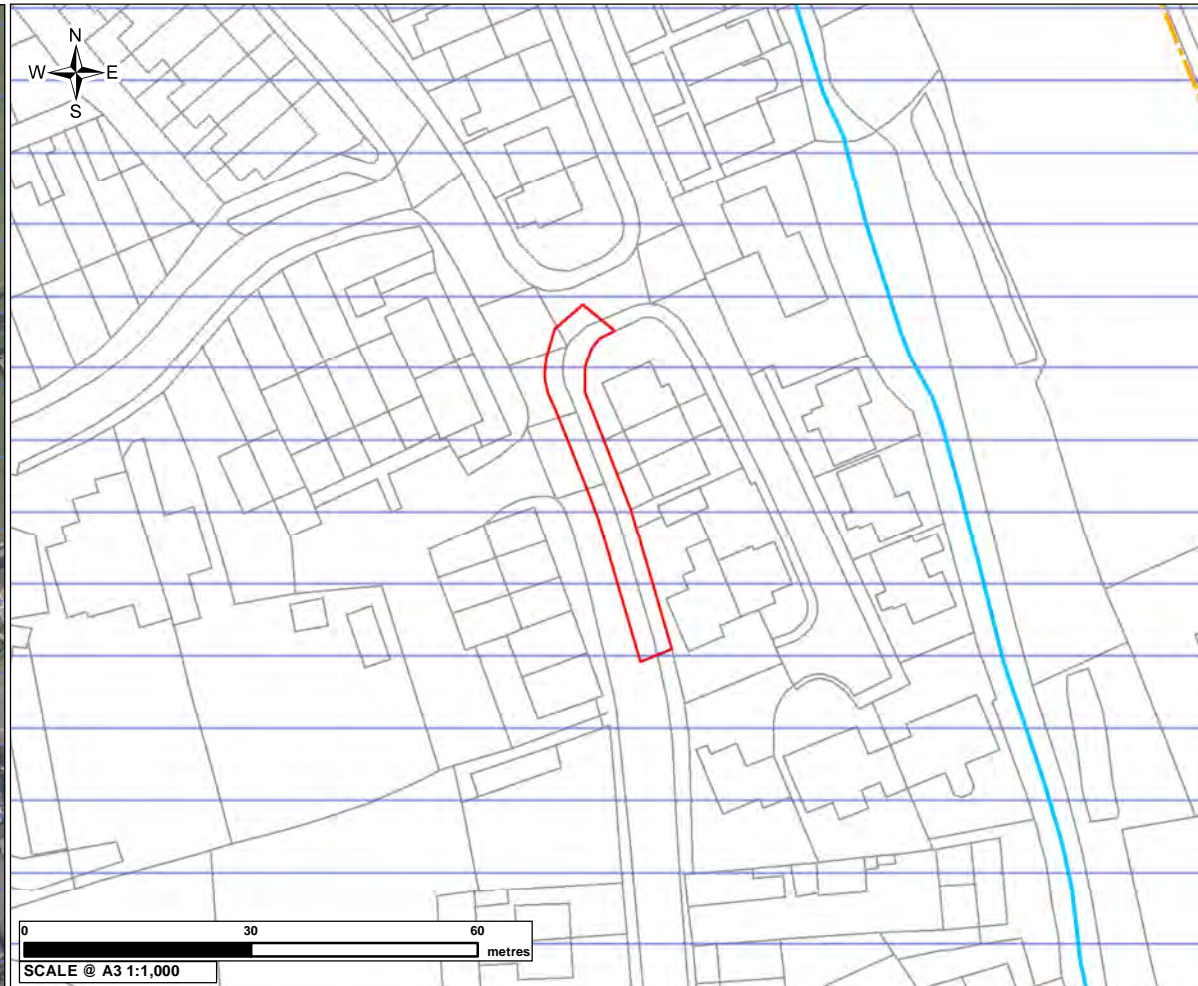
UNITED UTILITIES WATER LIMITED
 HAWESWATER AQUEDUCT RESILIENCE PROGRAMME
 MARL HILL AND NEWTON HIGHWAYS WORKS -
 ENVIRONMENTAL ASSESSMENT FIGURES
 PAGE 29 OF 33

DRAWING NUMBER	SHEET SIZE
RVBC-MH-FIG-V5-P1-002	A3
	REVISION
	01

CONTEXT PLAN



HIGHWAYS WORKS AND ENVIRONMENTAL CONSTRAINTS



MARL HILL AND NEWTON-IN-BOWLAND COMPOUNDS HIGHWAYS WORKS

1. The findings of the off-site highways works environmental topic appraisals are only reported on the individual pages of this set of figures for those topics where likely significant effects are considered likely to occur. As such, no text is included on the individual pages of this set of figures for those topics where likely significant effects are not anticipated.
2. Given the geographically broad nature of anticipated effects on arboricultural resources illustrated on this set of figures, no narrative text has been included in the reporting on the figures for this topic. Effects on arboriculture are instead reported in Volume 5, Off-Site Highways Works, Part 1: Environmental Assessment (excluding Ecology) report of the Proposed Swarther Section ES.
3. Anticipated effects on wider community areas are not reported on this set of figures, but are instead considered in the Volume 5, Off-Site Highways Works, Part 1 report.
4. Given the geographically broad nature of anticipated effects on transport planning, this topic is not addressed on this set of figures, but is instead reported in the Volume 5, Off-Site Highways Works, Part 1 report.
5. The findings of the terrestrial and aquatic ecological assessment are not addressed on this set of figures, and are instead reported separately in Volume 5, Off-Site Highways Works, Part 2: Environmental Assessment - Terrestrial and Aquatic Ecology report of the Proposed Swarther Section ES.
6. For further detail of the planning application boundary refer to Series 12 of the Planning Application Drawings.

Legend

Highways Works

Planning Application Boundary

Environmental Constraints

Main River

Footpath

Bowland Fringe and Pendle Hill National Character Area



HIGHWAYS WORKS LOCATION: CHATBURN PARKING RESTRICTION

Baseline

This reporting sheet shows baseline environmental features, designations and assets which have been considered in the environmental assessment process. Accounting for the topic reporting exclusions described in the 'Notes' section of this sheet (which are instead reported in the Volume 5, Off-Site Highways Works, Part 1 and Part 2 reports), none of these features, when screened against the predicted impacts associated with the proposed off-site highways works using the same methodology described in Volume 2, is anticipated to give rise to likely significant effects.

Likely Significant Effects - Pre-mitigation

No likely significant effects.

Mitigation / Reinstatement

No mitigation required.

01	KB	LT	SH	PLANNING SUBMISSION	6/18/2021
VERSION	AUTH	CHKD	REVD	REASON FOR ISSUE	DATE



UNITED UTILITIES WATER LIMITED
 HAWESWATER AQUEDUCT RESILIENCE PROGRAMME
 MARL HILL AND NEWTON HIGHWAYS WORKS -
 ENVIRONMENTAL ASSESSMENT FIGURES
 PAGE 30 OF 33

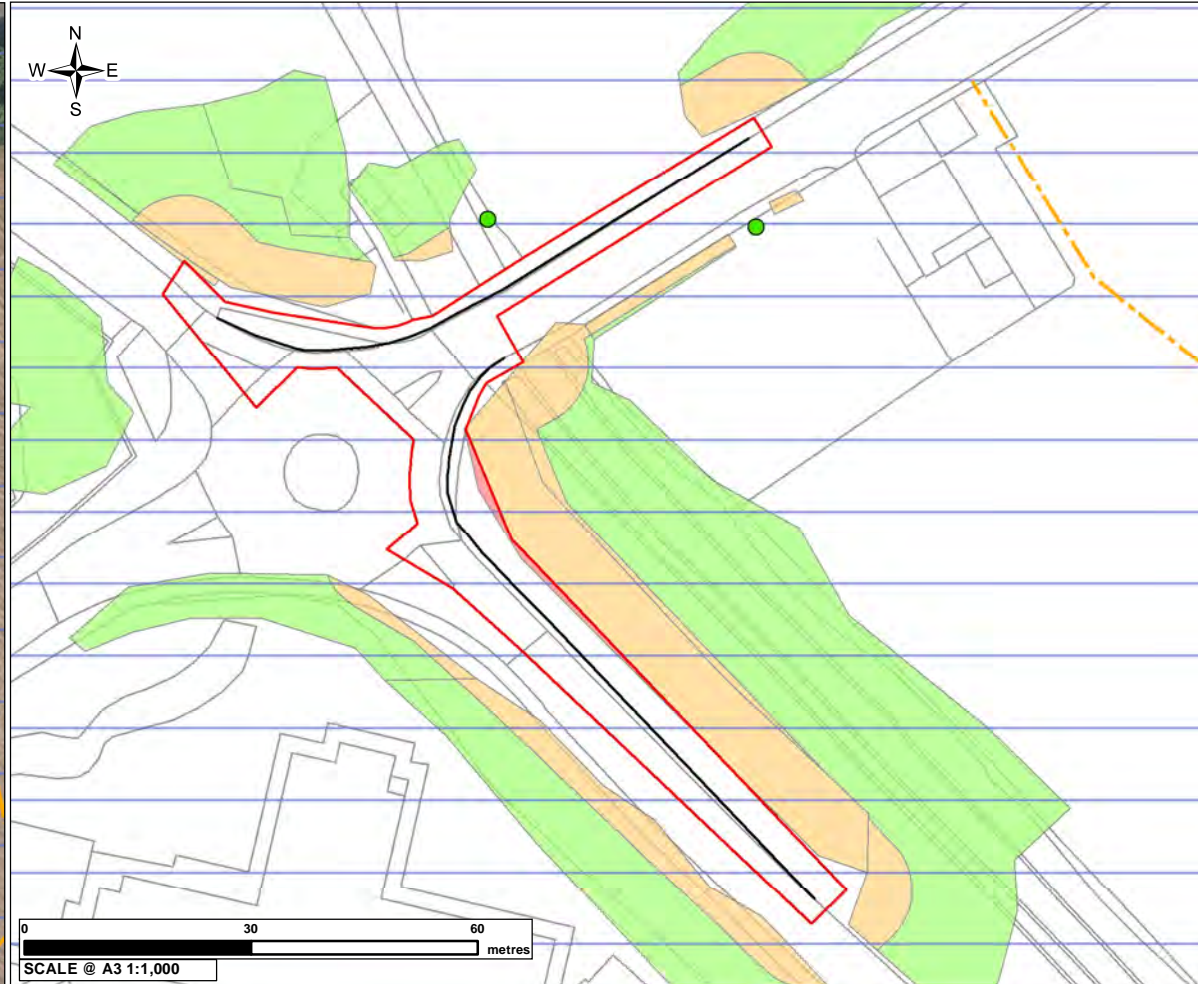
DRAWING NUMBER	RVBC-MH-FIG-V5-P1-002	SHEET SIZE	A3
REVISION	01		

CONTEXT PLAN



0 50 100 metres
SCALE @ A3 1:2,000

HIGHWAYS WORKS AND ENVIRONMENTAL CONSTRAINTS



0 30 60 metres
SCALE @ A3 1:1,000

MARL HILL AND NEWTON-IN-BOWLAND COMPOUNDS HIGHWAYS WORKS

1. The findings of the off-site highways works environmental topic appraisals are only reported on the individual pages of this set of figures for those topics where likely significant effects are considered likely to occur. As such, no text is included on the individual pages of this set of figures for those topics where likely significant effects are not anticipated.
2. Given the geographically broad nature of anticipated effects on arboricultural resources illustrated on this set of figures, no narrative text has been included in the reporting on the figures for this topic. Effects on arboriculture are instead reported in Volume 5, Off-Site Highways Works, Part 1: Environmental Assessment (excluding Ecology) report of the Proposed Swarther Section ES.
3. Anticipated effects on wider community areas are not reported on this set of figures, but are instead considered in the Volume 5, Off-Site Highways Works, Part 1 report.
4. Given the geographically broad nature of anticipated effects on transport planning, this topic is not addressed on this set of figures, but is instead reported in the Volume 5, Off-Site Highways Works, Part 1 report.
5. The findings of the terrestrial and aquatic ecological assessment are not addressed on this set of figures, and are instead reported separately in Volume 5, Off-Site Highways Works, Part 2: Environmental Assessment - Terrestrial and Aquatic Ecology report of the Proposed Swarther Section ES.
6. For further detail of the planning application boundary refer to Series 12 of the Planning Application Drawings.

Legend

Highways Works

Planning Application Boundary

Road Widening (RW)

Environmental Constraints

Main River

Footpath

Bowland Fringe and Pendle Hill National Character Area

Arboriculture Tree Point - RAG Impacts

Individual tree to be retained with protection measures

Arboriculture Tree Group Canopies - RAG Impacts

Tree Group/Woodland/Hedgerow Feature to be Removed

Tree Group/Woodland/Hedgerow Feature at Risk of Removal but Aiming to Retain

Tree Group/Woodland/Hedgerow Feature to be Retained with Protection Measures

HIGHWAYS WORKS LOCATION: RW01

Baseline

Noise and Vibration

Clitheroe community hospital.

Likely Significant Effects - Pre-mitigation

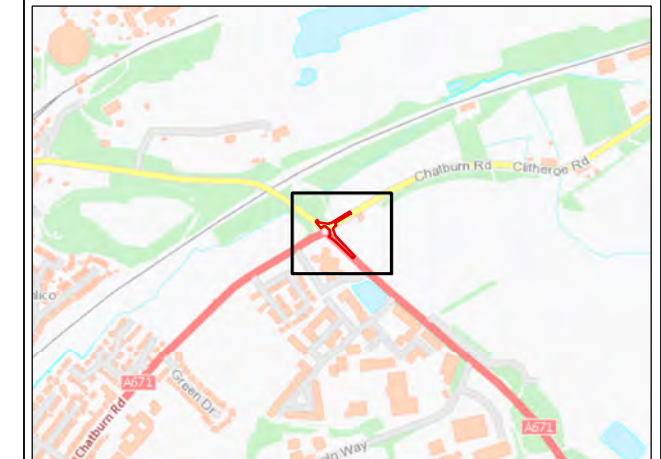
Noise and Vibration

Likely significant effect from noise and vibration on the users of Clitheroe community hospital 20m from the highway improvement works, during construction.

Mitigation / Reinstatement

Noise and Vibration

Implementation of CCoP for control of disruption during construction noise. In addition the screening of particularly noisy activities will be considered.



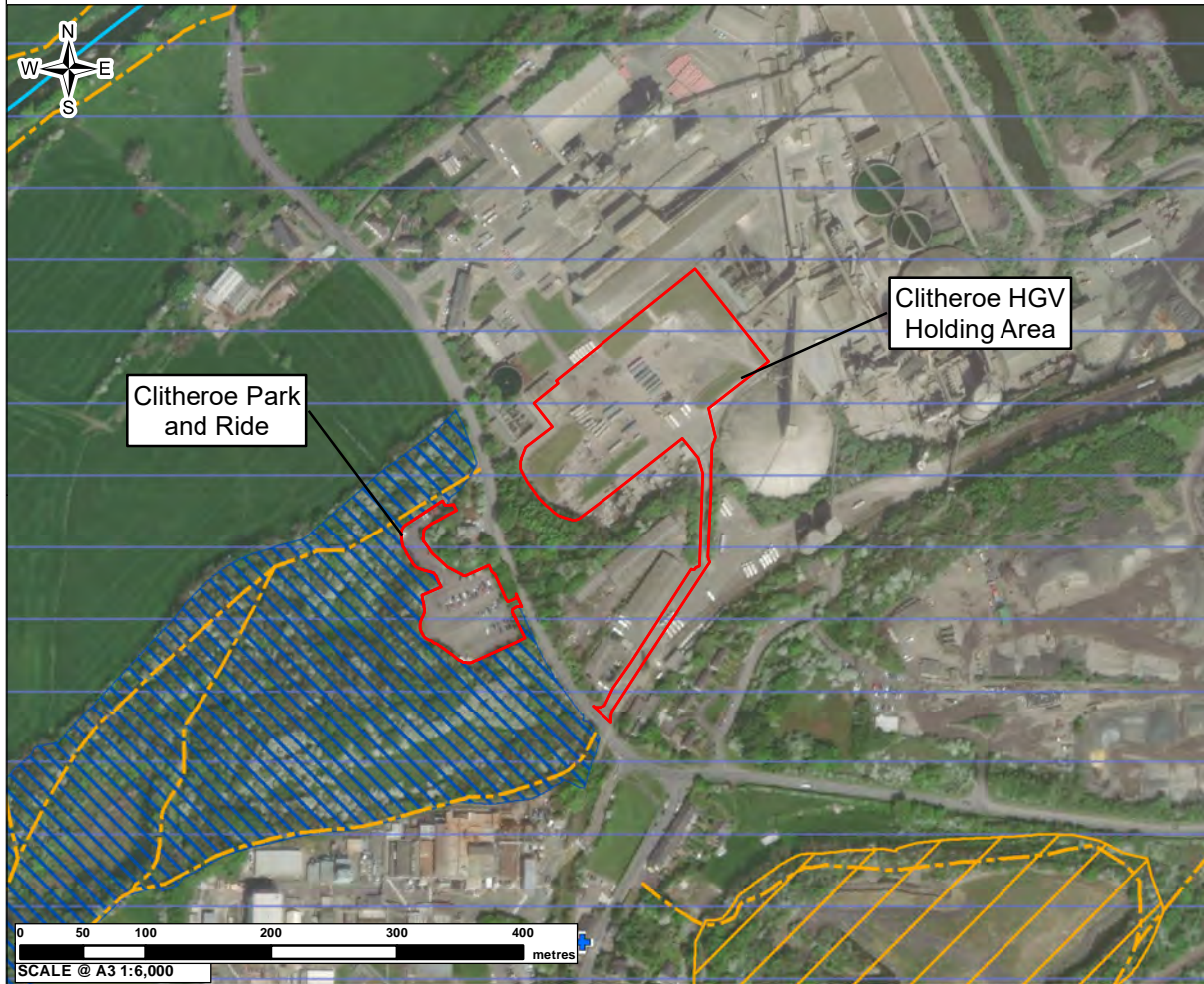
01	KB	LT	SH	PLANNING SUBMISSION	6/18/2021
VERSION	AUTH	CHKD	REVD	REASON FOR ISSUE	DATE



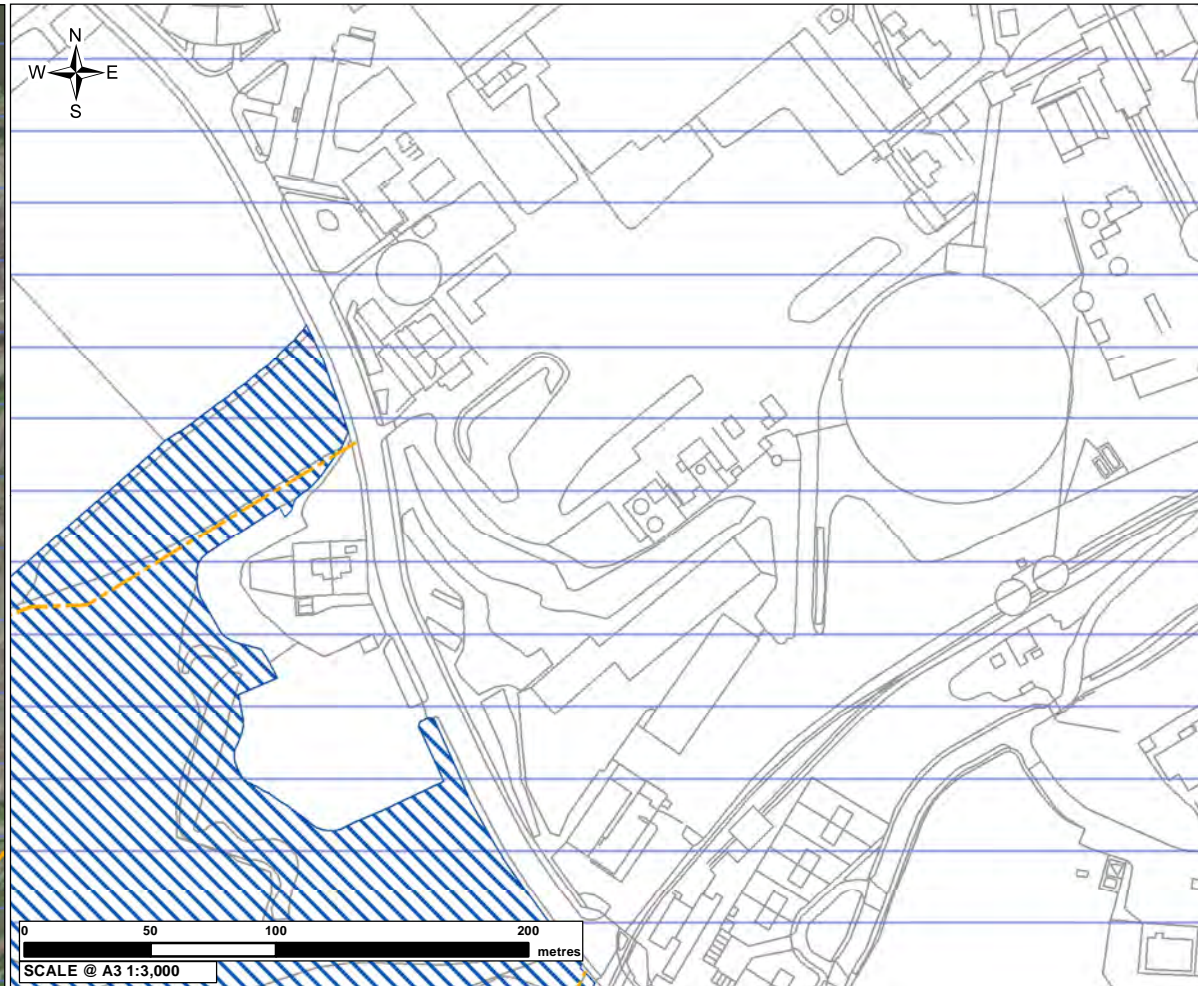
UNITED UTILITIES WATER LIMITED
HAWESWATER AQUEDUCT RESILIENCE PROGRAMME
MARL HILL AND NEWTON HIGHWAYS WORKS -
ENVIRONMENTAL ASSESSMENT FIGURES
PAGE 31 OF 33

DRAWING NUMBER	SHEET SIZE
RVBC-MH-FIG-V5-P1-002	A3
	REVISION
	01

CONTEXT PLAN



HIGHWAYS WORKS AND ENVIRONMENTAL CONSTRAINTS



MARL HILL AND NEWTON-IN-BOWLAND COMPOUNDS HIGHWAYS WORKS

1. The findings of the off-site highways works environmental topic appraisals are only reported on the individual pages of this set of figures for those topics where likely significant effects are considered likely to occur. As such, no text is included on the individual pages of this set of figures for those topics where likely significant effects are not anticipated.
2. Given the geographically broad nature of anticipated effects on arboricultural resources illustrated on this set of figures, no narrative text has been included in the reporting on the figures for this topic. Effects on arboriculture are instead reported in Volume 5, Off-Site Highways Works, Part 1: Environmental Assessment (excluding Ecology) report of the Proposed Swarther Section ES.
3. Anticipated effects on wider community areas are not reported on this set of figures, but are instead considered in the Volume 5, Off-Site Highways Works, Part 1 report.
4. Given the geographically broad nature of anticipated effects on transport planning, this topic is not addressed on this set of figures, but is instead reported in the Volume 5, Off-Site Highways Works, Part 1 report.
5. The findings of the terrestrial and aquatic ecological assessment are not addressed on this set of figures, and are instead reported separately in Volume 5, Off-Site Highways Works, Part 2: Environmental Assessment - Terrestrial and Aquatic Ecology report of the Proposed Swarther Section ES.
6. For further detail of the planning application boundary refer to Series 12 of the Planning Application Drawings.

Legend

- Highways Works**
- Planning Application Boundary
- Environmental Constraints**
- Grade II Listed Building
 - Main River
 - Footpath
 - Bowland Fringe and Pendle Hill National Character Area
 - Local Nature Reserves (LNR)
 - Site of Special Scientific Interest (SSSI)

HIGHWAYS WORKS LOCATION: CLITHEROE PARK AND RIDE

Baseline

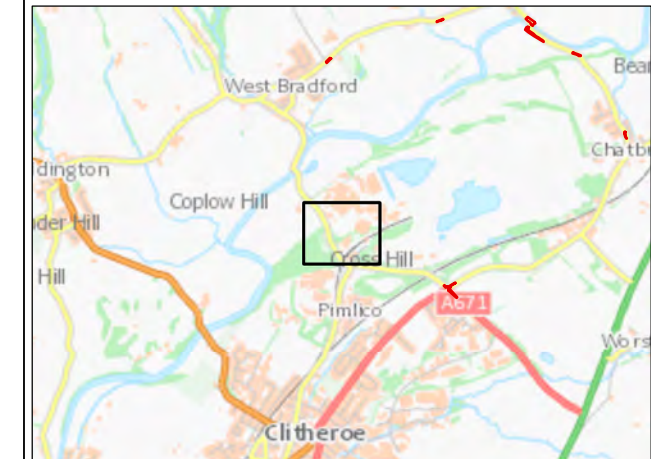
This reporting sheet shows baseline environmental features, designations and assets which have been considered in the environmental assessment process. Accounting for the topic reporting exclusions described in the 'Notes' section of this sheet (which are instead reported in the Volume 5, Off-Site Highways Works, Part 1 and Part 2 reports), none of these features, when screened against the predicted impacts associated with the proposed off-site highways works using the same methodology described in Volume 2, is anticipated to give rise to likely significant effects.

Likely Significant Effects - Pre-mitigation

No likely significant effects.

Mitigation / Reinstatement

No mitigation required.



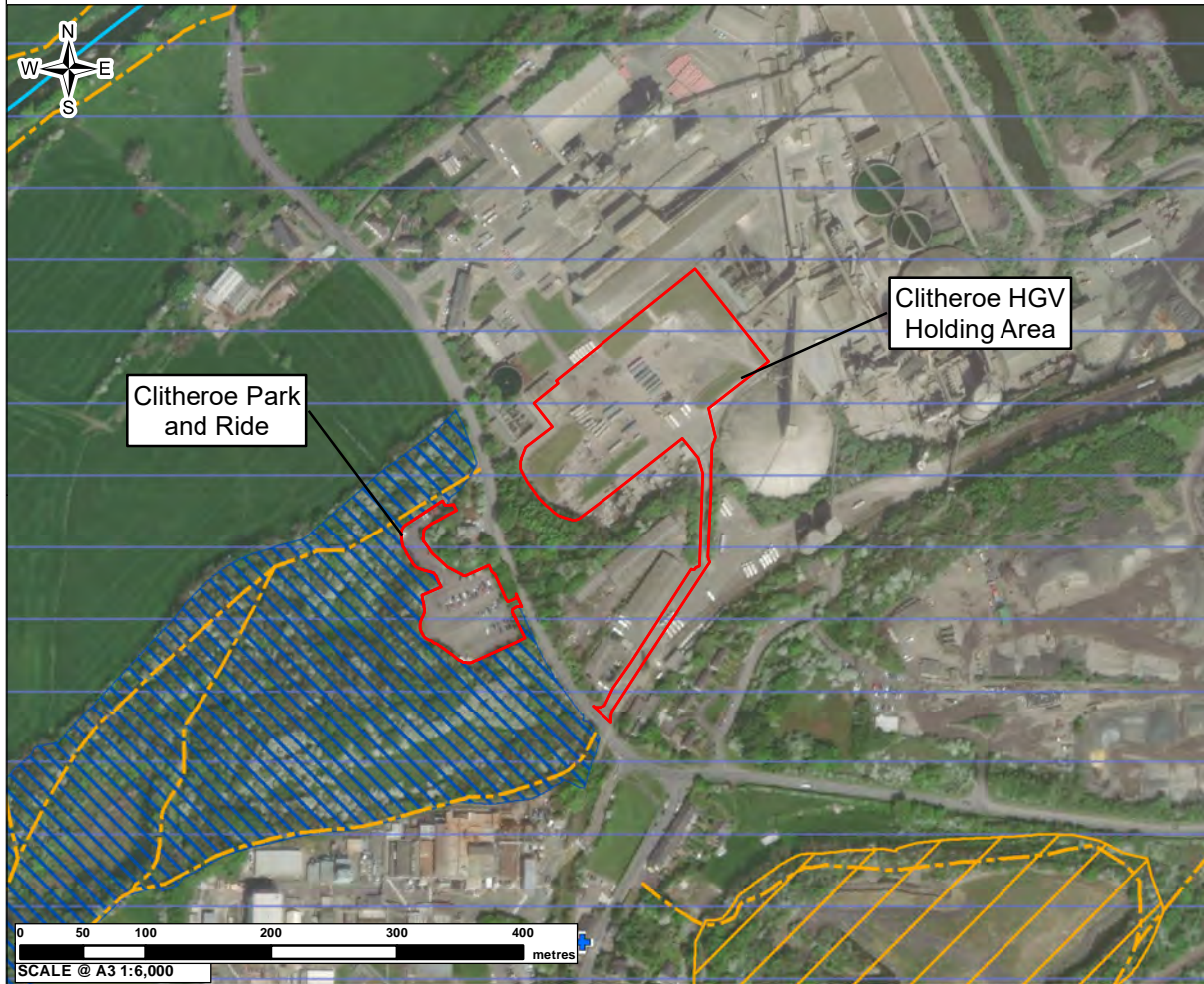
01	KB	LT	SH	PLANNING SUBMISSION	6/18/2021
VERSION	AUTH	CHKD	REVD	REASON FOR ISSUE	DATE



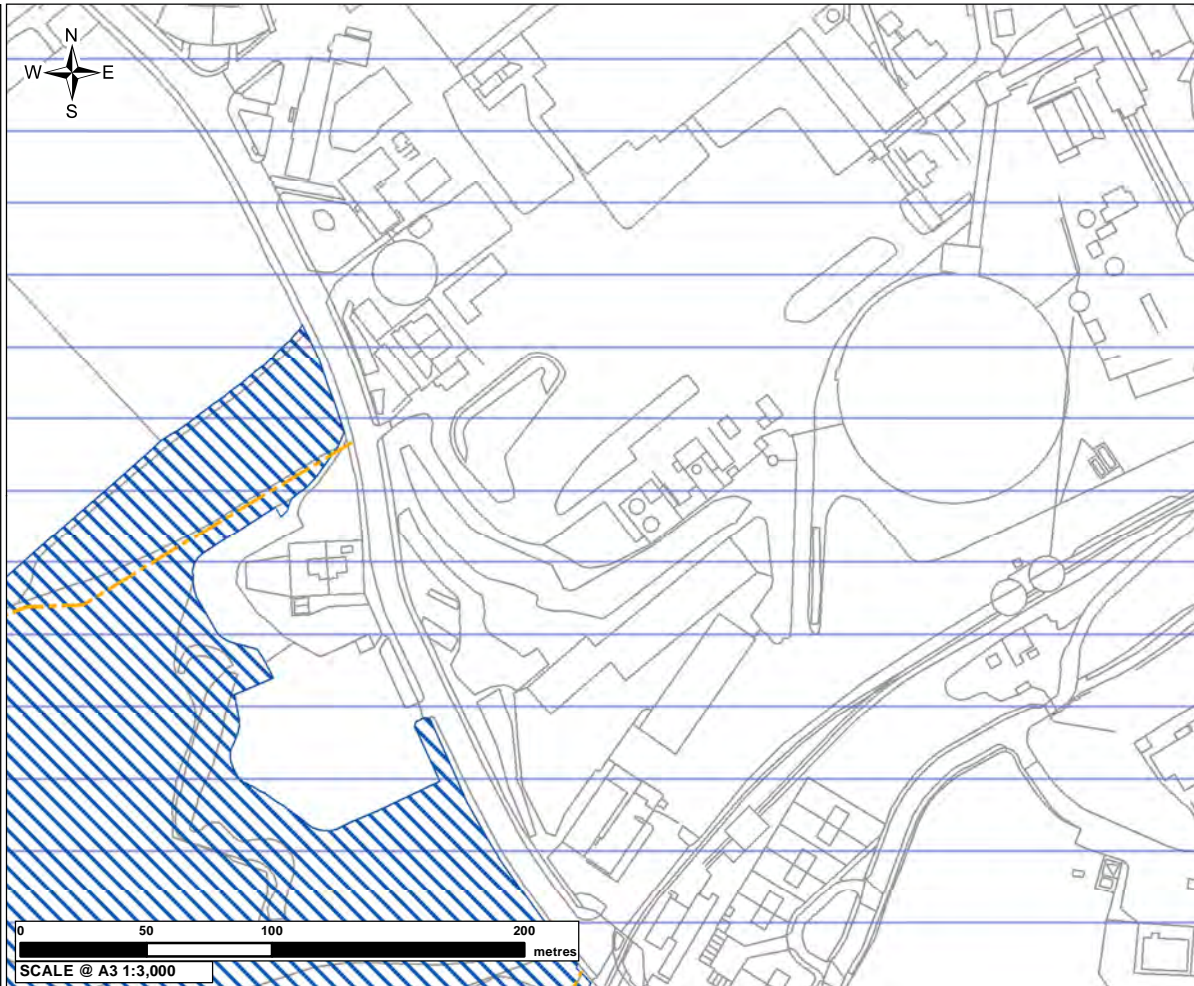
UNITED UTILITIES WATER LIMITED
 HAWESWATER AQUEDUCT RESILIENCE PROGRAMME
 MARL HILL AND NEWTON HIGHWAYS WORKS -
 ENVIRONMENTAL ASSESSMENT FIGURES
 PAGE 32 OF 33

DRAWING NUMBER	SHEET SIZE
RVBC-MH-FIG-V5-P1-002	A3
	REVISION
	01

CONTEXT PLAN



HIGHWAYS WORKS AND ENVIRONMENTAL CONSTRAINTS



MARL HILL AND NEWTON-IN-BOWLAND COMPOUNDS HIGHWAYS WORKS

1. The findings of the off-site highways works environmental topic appraisals are only reported on the individual pages of this set of figures for those topics where likely significant effects are considered likely to occur. As such, no text is included on the individual pages of this set of figures for those topics where likely significant effects are not anticipated.
2. Given the geographically broad nature of anticipated effects on arboricultural resources illustrated on this set of figures, no narrative text has been included in the reporting on the figures for this topic. Effects on arboriculture are instead reported in Volume 5, Off-Site Highways Works, Part 1: Environmental Assessment (excluding Ecology) report of the Proposed Swarther Section ES.
3. Anticipated effects on wider community areas are not reported on this set of figures, but are instead considered in the Volume 5, Off-Site Highways Works, Part 1 report.
4. Given the geographically broad nature of anticipated effects on transport planning, this topic is not addressed on this set of figures, but is instead reported in the Volume 5, Off-Site Highways Works, Part 1 report.
5. The findings of the terrestrial and aquatic ecological assessment are not addressed on this set of figures, and are instead reported separately in Volume 5, Off-Site Highways Works, Part 2: Environmental Assessment - Terrestrial and Aquatic Ecology report of the Proposed Swarther Section ES.
6. For further detail of the planning application boundary refer to Series 12 of the Planning Application Drawings.

Legend

- Highways Works**
- Planning Application Boundary
- Environmental Constraints**
- Grade II Listed Building
 - Main River
 - Footpath
 - Bowland Fringe and Pendle Hill National Character Area
 - Local Nature Reserves (LNR)
 - Site of Special Scientific Interest (SSSI)

HIGHWAYS WORKS LOCATION: CLITHEROE HGV HOLDING AREA

Baseline

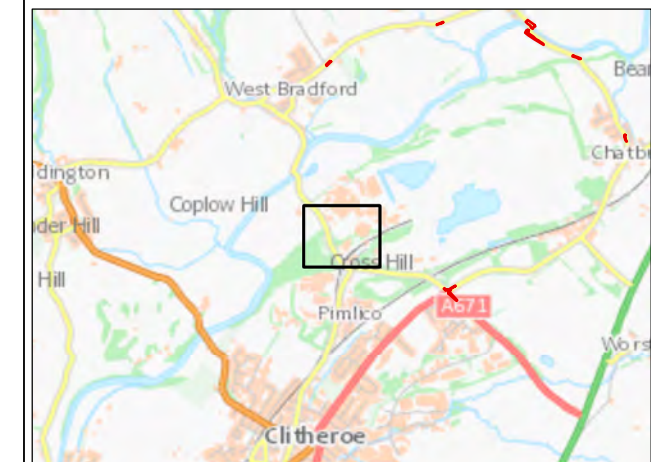
This reporting sheet shows baseline environmental features, designations and assets which have been considered in the environmental assessment process. Accounting for the topic reporting exclusions described in the 'Notes' section of this sheet (which are instead reported in the Volume 5, Off-Site Highways Works, Part 1 and Part 2 reports), none of these features, when screened against the predicted impacts associated with the proposed off-site highways works using the same methodology described in Volume 2, is anticipated to give rise to likely significant effects.

Likely Significant Effects - Pre-mitigation

No likely significant effects.

Mitigation / Reinstatement

No mitigation required.



01	KB	LT	SH	PLANNING SUBMISSION	6/18/2021
VERSION	AUTH	CHKD	REVD	REASON FOR ISSUE	DATE



UNITED UTILITIES WATER LIMITED
 HAWESWATER AQUEDUCT RESILIENCE PROGRAMME
 MARL HILL AND NEWTON HIGHWAYS WORKS -
 ENVIRONMENTAL ASSESSMENT FIGURES
 PAGE 33 OF 33

DRAWING NUMBER	SHEET SIZE
RVBC-MH-FIG-V5-P1-002	A3
	REVISION
	01