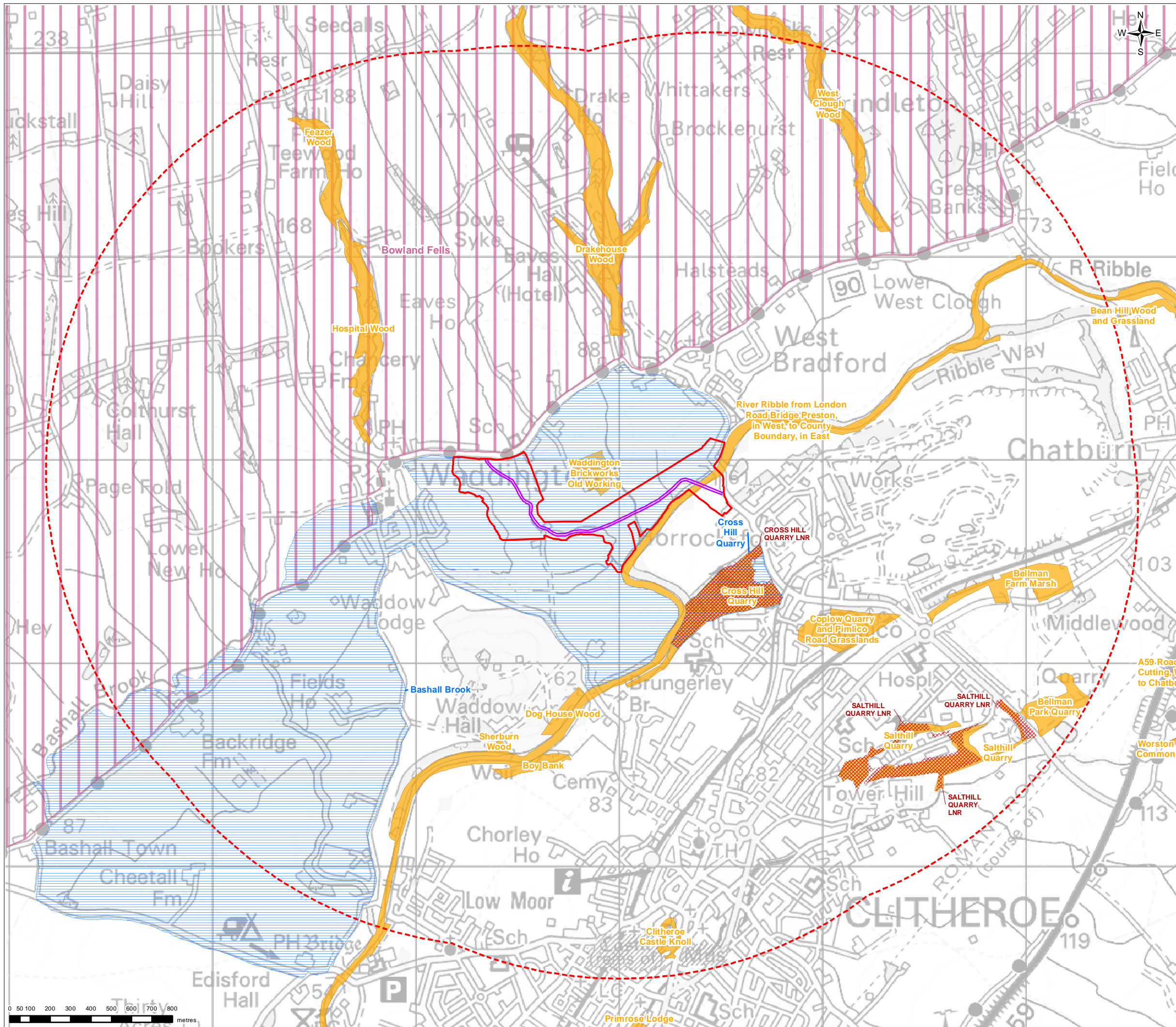


FIGURE 9A.2

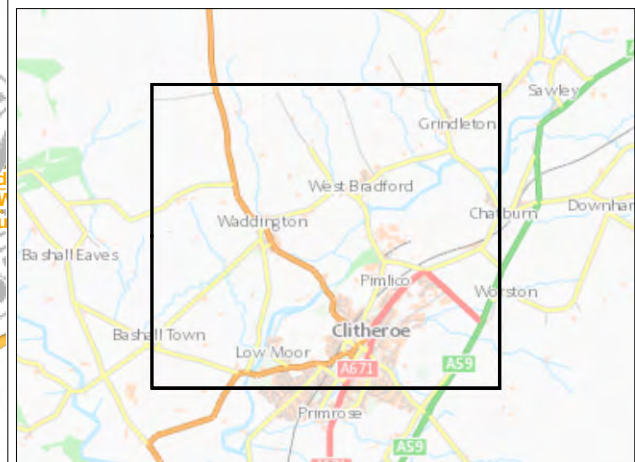


**Legend**

- Red line boundary
- Red line boundary - 2km buffer
- Proposed route alignment

**Ecological Designations**

- Biological Heritage Site
- Local Geodiversity Site
- Local Nature Reserve
- Important bird area



0	MK	CW	KG	Initial Issue	10/06/2021
VERSION	AUTH	CHRD	REVD	REASON FOR ISSUE	DATE



UNITED UTILITIES WATER LIMITED  
 HAWESWATER AQUEDUCT RESILIENCE PROGRAMME  
 ECOLOGICAL NON-STATUTORY DESIGNATIONS WITHIN 2KM BUFFER  
 RIBBLE CROSSING

SCALE 1:18,000	SHEET SIZE A3
DRAWING NUMBER RVBC-MH-RC-FIG-009-01-002	REVISION 0

The copyright of this document, which contains information of a proprietary nature, is vested in United Utilities Water Limited. The content of this document may not be used for purposes other than that for which it has been supplied and may not be reproduced, either wholly or in part, in any way whatsoever. It may not be used by, or its contents divulged to any other person whatsoever without the prior written permission of United Utilities Water Limited. Copyright Acknowledgement: Use of Ordnance Survey map data sanctioned by the controller of H.M. Stationery Office. OS Licence Number 100019326. Crown copyright reserved. Unauthorised production infringes copyright. Contains data provided by Lancashire Environment Record Network © Lancashire Environment Record Network 2020. Data reproduced with the permission of RSPB. © Crown Copyright. Ordnance Survey licence number 100021787 (2021).