







FIGURE 9A.7

Legend

-  Red line boundary
-  Red line boundary - 20m buffer
-  Proposed route
-  Page and page number



VERSION	AUTH	CHRD	REVD	REASON FOR ISSUE	DATE
0	MK	FW	KG	Initial Issue	10/06/2021



UNITED UTILITIES WATER LIMITED  
 HAWESWATER AQUEDUCT RESILIENCE PROGRAMME  
 TREES WITH BAT ROOST SUITABILITY  
 RIBBLE CROSSING  
 PAGE 1 OF 4

SCALE 1:5,000	SHEET SIZE A3
DRAWING NUMBER RVBC-MH-RC-FIG-009-01-007.1	REVISION 0

The copyright of this document, which contains information of a proprietary nature, is vested in United Utilities Water Limited. The content of this document may not be used for purposes other than that for which it has been supplied and may not be reproduced, either wholly or in part, in any way whatsoever. It may not be used by, or its contents divulged to any other person whatsoever without the prior written permission of United Utilities Water Limited. Copyright Acknowledgement: Use of Ordnance Survey map data sanctioned by the controller of H.M. Stationery Office. OS Licence Number 100019326. Crown copyright reserved. Unauthorised production infringes copyright. Esri, DigitalGlobe, GeoEye, Earthstar Geographics, CNES/Airbus DS, USDA, USGS, AeroGRID, IGN, and the GIS User Community. Contains OS data © Crown copyright and database right 2021.



FIGURE 9A.7



Legend

- Red line boundary
- Red line boundary - 20m buffer
- Proposed route
- Low roost suitability
- Moderate roost suitability
- High roost suitability



VERSION	AUTH	CHRD	REVD	REASON FOR ISSUE	DATE
0	MK	FW	KG	Initial Issue	10/06/2021



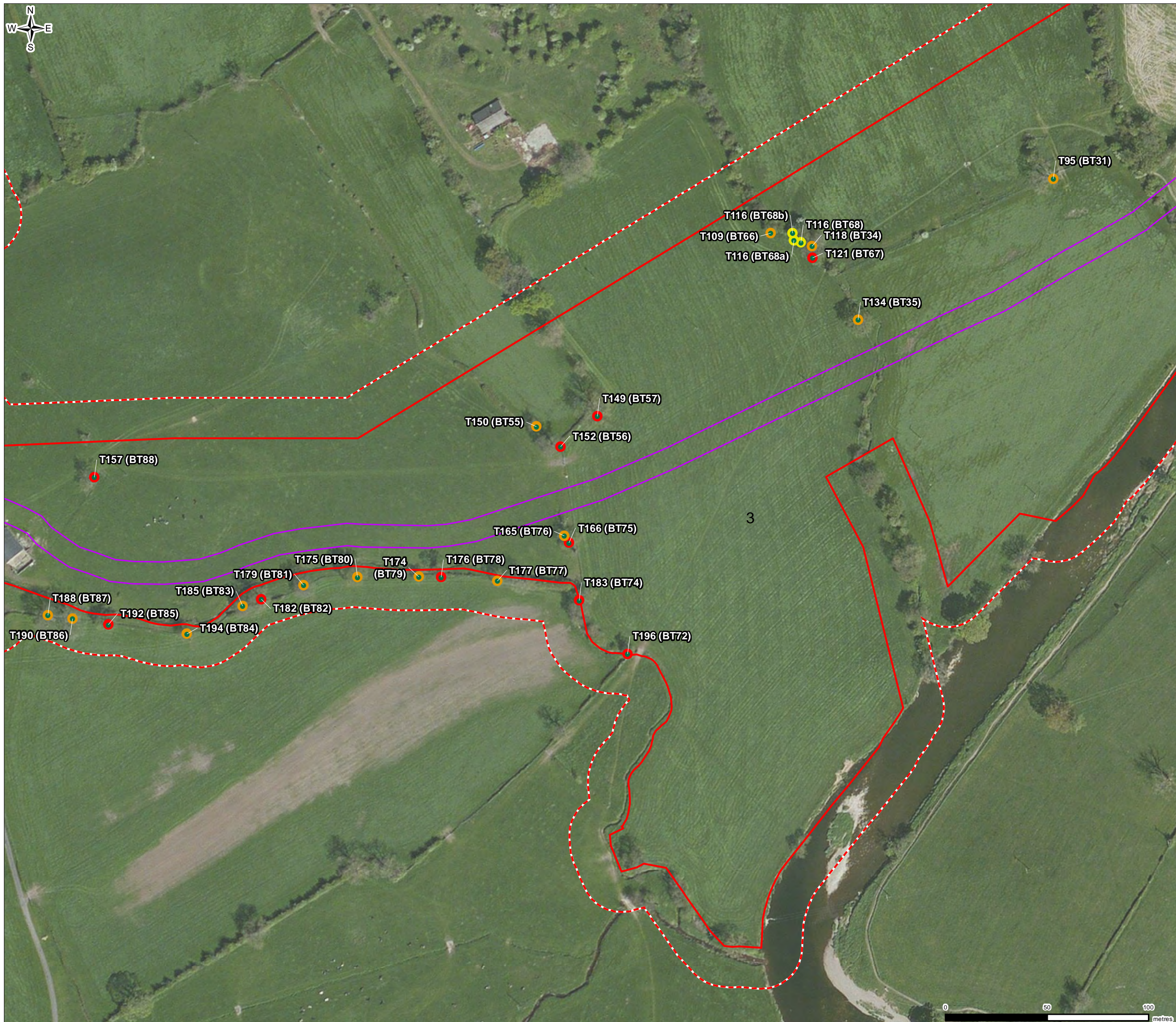
UNITED UTILITIES WATER LIMITED  
 HAWESWATER AQUEDUCT RESILIENCE PROGRAMME  
 TREES WITH BAT ROOST SUITABILITY  
 RIBBLE CROSSING  
 PAGE 2 OF 4

SCALE 1:1,800	SHEET SIZE A3
DRAWING NUMBER RVBC-MH-RC-FIG-009-01-007.2	REVISION 0

The copyright of this document, which contains information of a proprietary nature, is vested in United Utilities Water Limited. The content of this document may not be used for purposes other than that for which it has been supplied and may not be reproduced, either wholly or in part, in any way whatsoever. It may not be used by, or its contents divulged to any other person whatsoever without the prior written permission of United Utilities Water Limited. Copyright Acknowledgement: Use of Ordnance Survey map data sanctioned by the controller of H.M. Stationery Office. OS Licence Number 100019326. Crown copyright reserved. Unauthorised production infringes copyright. Esri, DigitalGlobe, GeoEye, Earthstar Geographics, CNES/Airbus DS, USDA, USGS, AeroGRID, IGN, and the GIS User Community. Contains OS data © Crown copyright and database right 2021.



FIGURE 9A.7



Legend

- Red line boundary
- Red line boundary - 20m buffer
- Proposed route
- Low roost suitability
- Moderate roost suitability
- High roost suitability



VERSION	AUTH	CHRD	REVD	REASON FOR ISSUE	DATE
0	MK	FW	KG	Initial Issue	10/06/2021



UNITED UTILITIES WATER LIMITED  
 HAWESWATER AQUEDUCT RESILIENCE PROGRAMME  
 TREES WITH BAT ROOST SUITABILITY  
 RIBBLE CROSSING  
 PAGE 3 OF 4

SCALE 1:1,800	SHEET SIZE A3
DRAWING NUMBER RVBC-MH-RC-FIG-009-01-007.3	REVISION 0

The copyright of this document, which contains information of a proprietary nature, is vested in United Utilities Water Limited. The content of this document may not be used for purposes other than that for which it has been supplied and may not be reproduced, either wholly or in part, in any way whatsoever. It may not be used by, or its contents divulged to any other person whatsoever without the prior written permission of United Utilities Water Limited. Copyright Acknowledgement: Use of Ordnance Survey map data sanctioned by the controller of H.M. Stationery Office. OS Licence Number 100019326. Crown copyright reserved. Unauthorised production infringes copyright. Esri, DigitalGlobe, GeoEye, Earthstar Geographics, CNES/Airbus DS, USDA, USGS, AeroGRID, IGN, and the GIS User Community. Contains OS data © Crown copyright and database right 2021.



FIGURE 9A.7



- Legend**
- Red line boundary
  - Red line boundary - 20m buffer
  - Proposed route
  - Low roost suitability
  - Moderate roost suitability
  - High roost suitability



0	MK	FW	KG	Initial Issue	10/06/2021
VERSION	AUTH	CHRD	REVD	REASON FOR ISSUE	DATE



UNITED UTILITIES WATER LIMITED  
 HAWESWATER AQUEDUCT RESILIENCE PROGRAMME  
 TREES WITH BAT ROOST SUITABILITY  
 RIBBLE CROSSING  
 PAGE 4 OF 4

SCALE 1:1,800	SHEET SIZE A3
DRAWING NUMBER RVBC-MH-RC-FIG-009-01-007.4	REVISION 0

The copyright of this document, which contains information of a proprietary nature, is vested in United Utilities Water Limited. The content of this document may not be used for purposes other than that for which it has been supplied and may not be reproduced, either wholly or in part, in any way whatsoever. It may not be used by, or its contents divulged to any other person whatsoever without the prior written permission of United Utilities Water Limited. Copyright Acknowledgement: Use of Ordnance Survey map data sanctioned by the controller of H.M. Stationery Office. OS Licence Number 100019326. Crown copyright reserved. Unauthorised production infringes copyright. Esri, DigitalGlobe, GeoEye, Earthstar Geographics, CNES/Airbus DS, USDA, USGS, AeroGRID, IGN, and the GIS User Community. Contains OS data © Crown copyright and database right 2021.