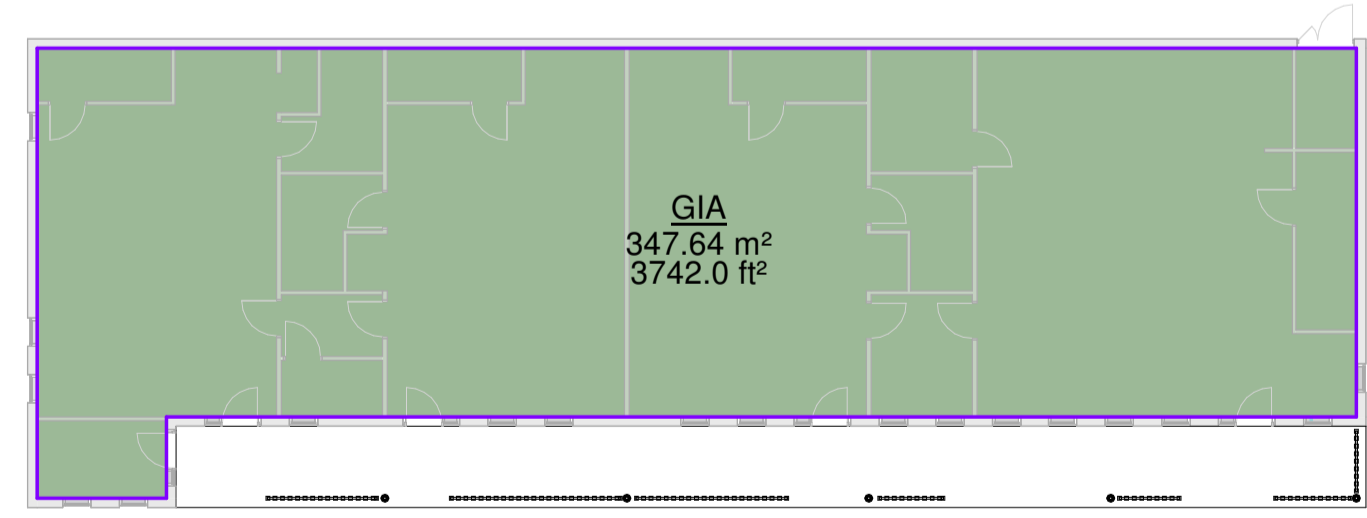
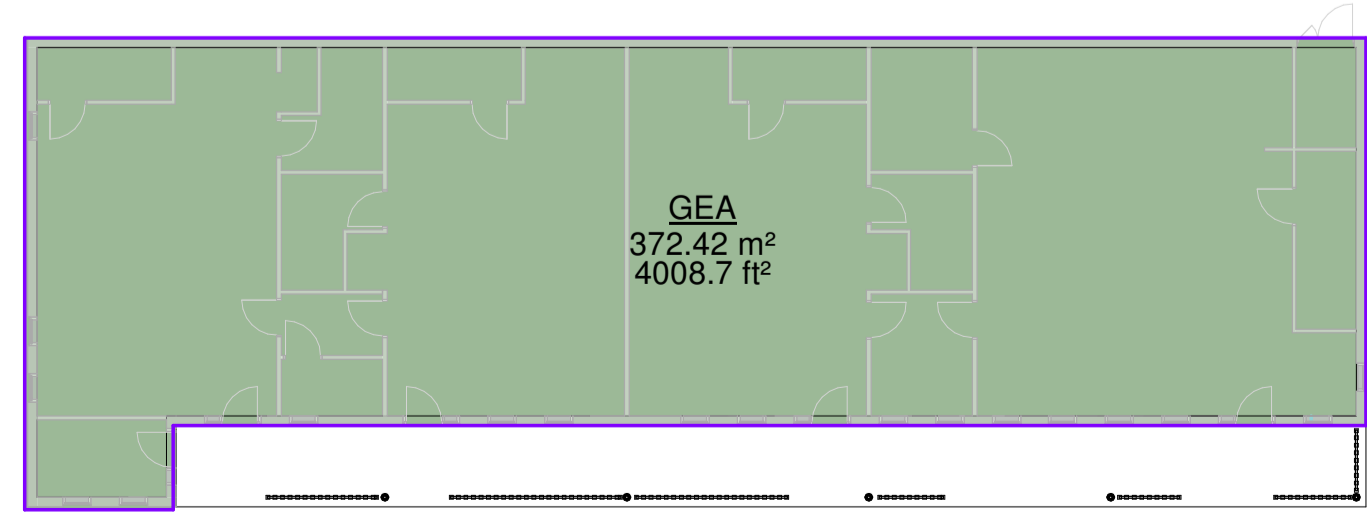


1 00-GROUND FLOOR
 1:100



2 00-Gross Internal Area
 1:200



3 00-Gross External Area
 1:200

Area Type Legend

- Circulation
- Classroom
- Communal
- Large Space
- Plant
- Sanitary
- Staff Areas
- Storage

Schedule_Rooms_Proposed

Room Number	Room Name	Perimeter	Area	Occupancy
00-Ground				
001	Infant Hall	37 m	84 m²	0
002	Plant	5 m	1 m²	
003	Store	6 m	2 m²	
004	Staff Room	16 m	16 m²	3
005	Circulation	18 m	14 m²	
006	Acc.WC	8 m	3 m²	
007	Nursery	32 m	57 m²	36
008	WCs	12 m	9 m²	
009	Store	5 m	2 m²	
010	Cloak	5 m	1 m²	
00-GROUND FLOOR				
010	CLASSROOM	39 m	82 m²	45
010a	Cloak	7 m	3 m²	
011	WC	11 m	7 m²	
012	PLANT	9 m	4 m²	
012	STORE	13 m	8 m²	
013	GROUP ROOM	12 m	9 m²	0
014	CLASSROOM	32 m	55 m²	30
014a	Cloak	5 m	2 m²	
015	STORE	10 m	5 m²	
016	WC	12 m	9 m²	
017	CLASSROOM	36 m	57 m²	30
017a	Cloak	Redundant Room	Redundant Room	
018	WC	12 m	7 m²	
019	STORE	10 m	5 m²	
020	Acc.WC	8 m	4 m²	0
021	CLASSROOM	31 m	55 m²	30
021a	Cloak	6 m	2 m²	
022	STORE	10 m	5 m²	
023	WC	11 m	7 m²	
024	SEN/Group	11 m	7 m²	
Grand total: 30		426 m	519 m²	

P5	Roof Colour amended to Planners request	CAA	29.01.2024
P4	Update for client comments and planning issue	CAA	22.08.2023
P3	Amended KS1 and site layout to reflect client discussions	CAA	20.07.2023
P2	Amended GA Layout	CAA	10.07.2023
P1	First Issue	CAA	26.06.2023
Rev	Description	By	Date

Cassidy+Ashton C+A
 www.cassidyashton.co.uk
 Architecture + Building Surveying + Town Planning

7 East Cliff, Preston, Lancashire, PR1 3JE T: 01772 258 356
 10 Hunters Walk, Canal Street, Chester, CH1 4EB T: 01244 402 900
 St Andrews Business Centre, Mold, Flintshire, CH7 1XB T: 01352 706 244

Client
Diocese of Blackburn
St James CoE Primary School, Clitheroe

Project
New Infant School, Demolition & Refurbishment

Drawing Title
Proposed Floor Plan

Drawn by **SB/SO** Checked by **SB/AB** Date **16.06.2023**

Subsidiary **S2** Scale @ **A1** As indicated

10512 **STJ-CAA-02-00-DR-A-2100** **P5**

C-A JOB NO. PROJECT - ORIGINATOR - VOL. - LEVEL - TYPE - ROLE - NUMBER REV.