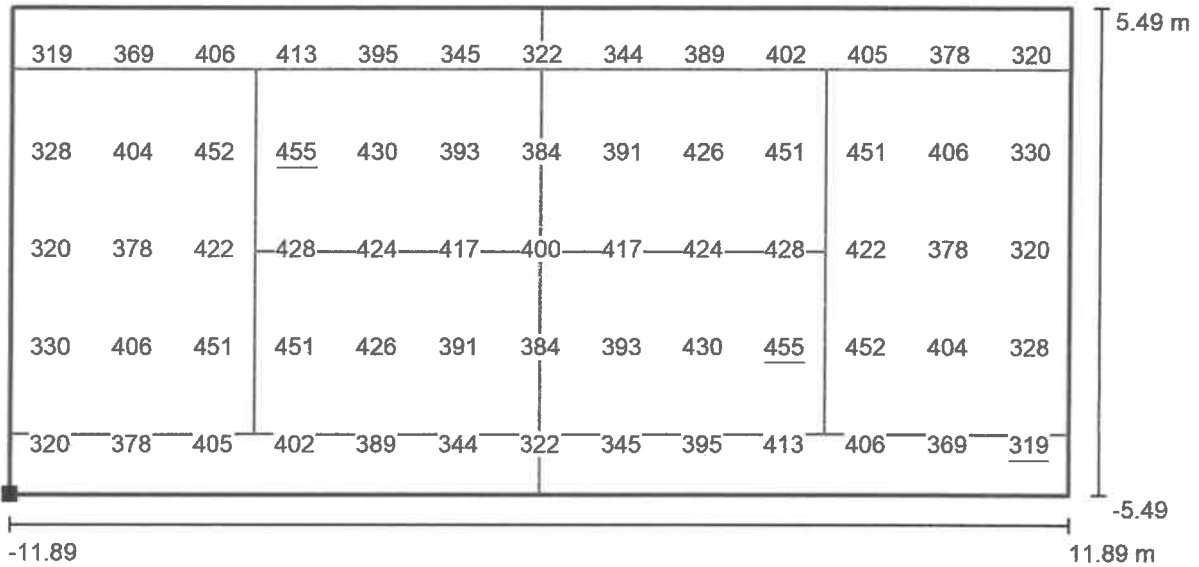


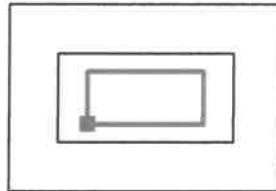
Operator
Telephone
Fax
e-Mail

Exterior Scene 1 / Tennis 1 Calculation Grid (PA) / Value Chart (E, Perpendicular)



Values in Lux, Scale 1 : 170

Position of surface in external scene:
Marked point: (-11.885 m, -5.485 m, 0.000 m)



Grid: 13 x 5 Points

E_{av} [lx]
391

E_{min} [lx]
319

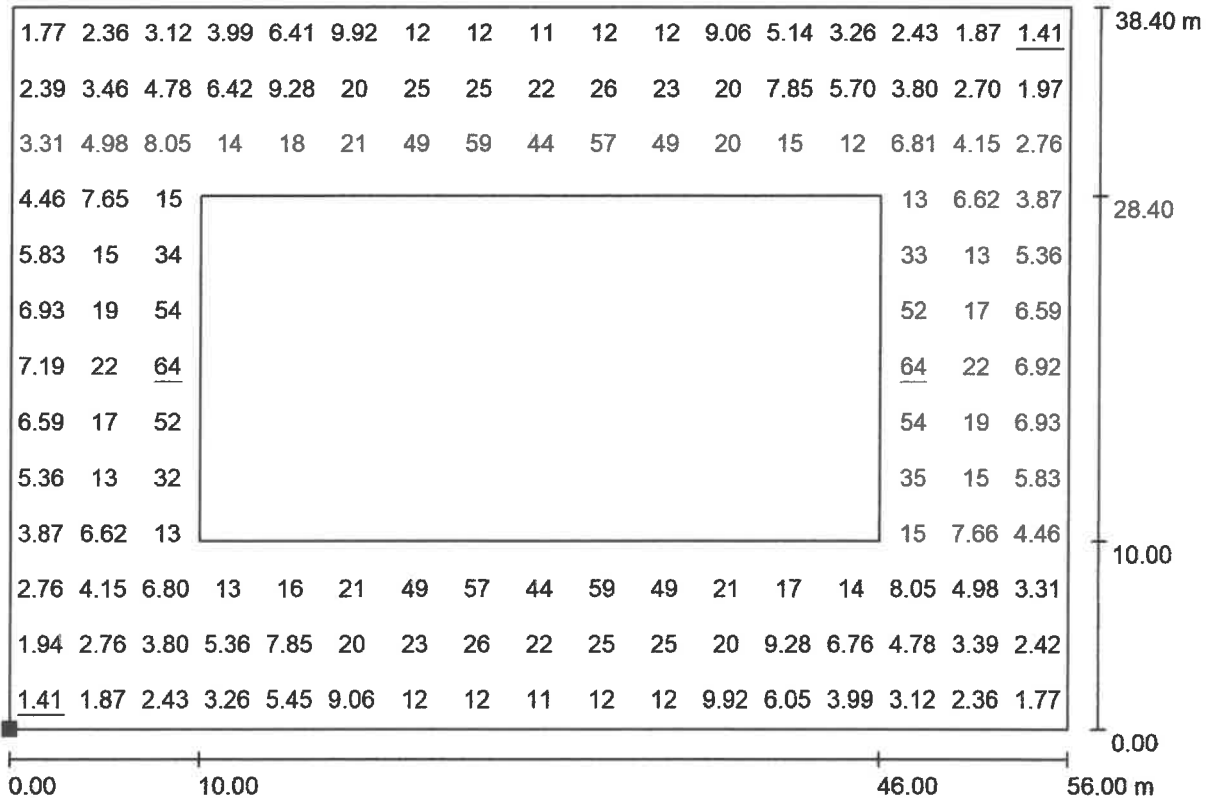
E_{max} [lx]
455

u_0
0.82

E_{min} / E_{max}
0.70

Operator
Telephone
Fax
e-Mail

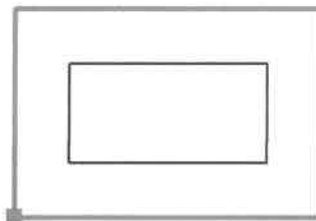
Exterior Scene 1 / Ground Element 1 / Surface 1 / Value Chart (E)



Values in Lux, Scale 1 : 401

Not all calculated values could be displayed.

Position of surface in external scene:
Marked point:
(-28.000 m, -19.200 m, 0.000 m)



Grid: 17 x 13 Points

E_{av} [lx]
15

E_{min} [lx]
1.41

E_{max} [lx]
64

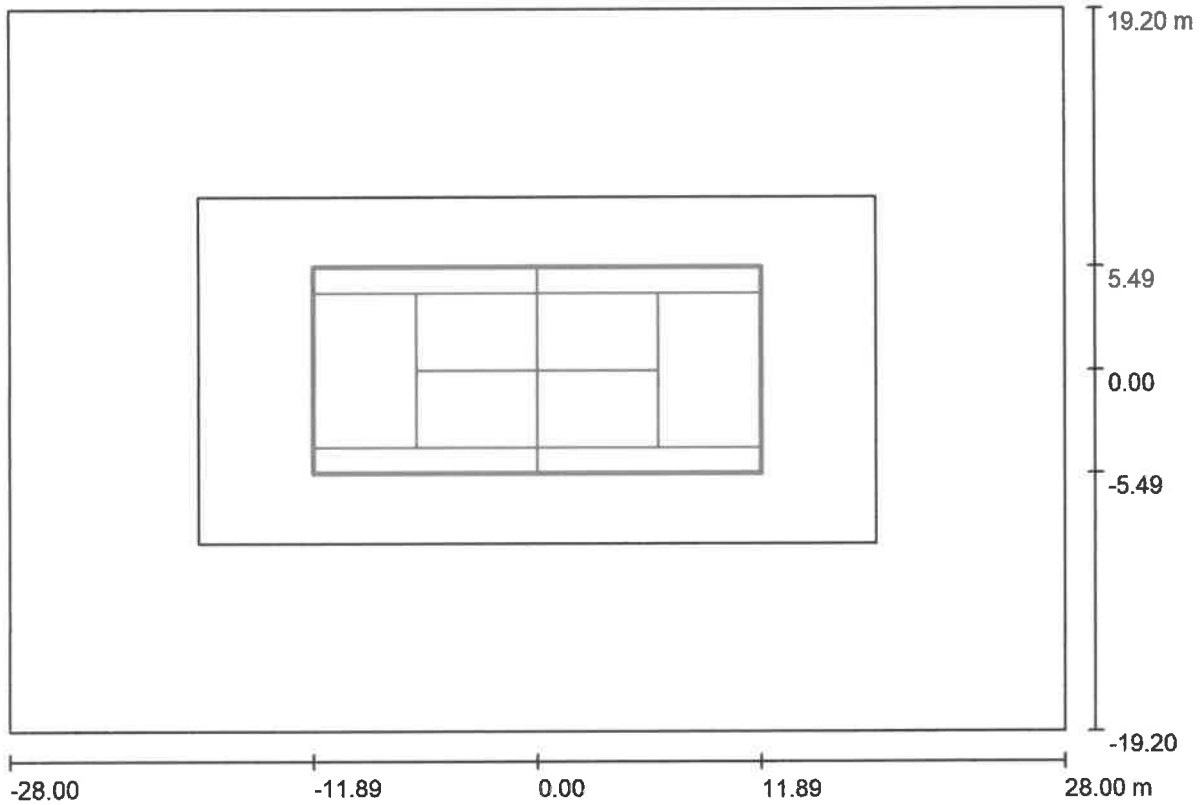
$u0$
0.091

E_{min} / E_{max}
0.022



Operator
Telephone
Fax
e-Mail

Exterior Scene 1 / Tennis 1 Calculation Grid (PA) / Summary



Scale 1 : 401

Position: (0.000 m, 0.000 m, 0.000 m)
 Size: (23.770 m, 10.970 m)
 Rotation: (0.0°, 0.0°, 0.0°)
 Type: Normal, Grid: 13 x 5 Points
 Belongs to the following sport arena: Tennis 1

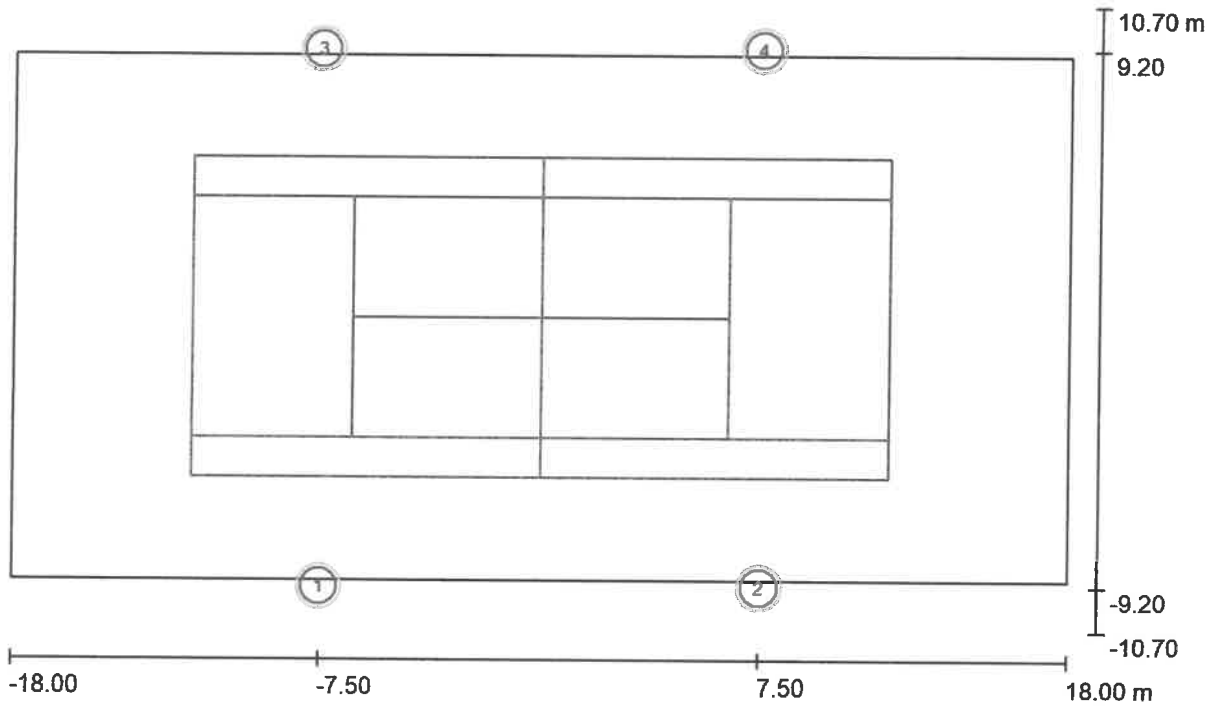
Results overview

No.	Type	E_{av} [lx]	E_{min} [lx]	E_{max} [lx]	u0	E_{min} / E_{max}	$E_{h\ m} / E_m$	H [m]	Camera
1	perpendicular	391	319	455	0.82	0.70	/	0.000	/

$E_{h\ m} / E_m$ = Relationship between middle horizontal and vertical illuminance, H = Measuring Height

Operator
Telephone
Fax
e-Mail

Exterior Scene 1 / Pole Positions (Coordinates List)



Scale 1 : 258

List of the Pole Positions

No.	Designation	Position [m]		
		X	Y	Z
1	Pole Position 1	-7.500	-9.200	0.000
2	Pole Position 2	7.500	-9.200	0.000
3	Pole Position 3	-7.500	9.200	0.000
4	Pole Position 4	7.500	9.200	0.000

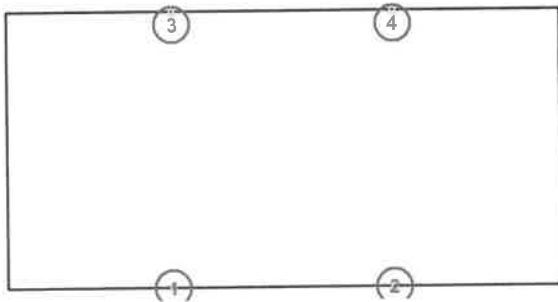


Operator
Telephone
Fax
e-Mail

Exterior Scene 1 / Luminaires (coordinates list)

Daca Lighting 2MFL450W50B-130X40

65060 lm, 455.9 W, 1 x 1 x User defined (Correction Factor 1.000).



No.	Position [m]		Z	Rotation [°]		
	X	Y		X	Y	Z
1	-7.200	-9.000	8.000	0.0	0.0	90.0
2	7.200	-9.000	8.000	0.0	0.0	90.0
3	-7.200	9.000	8.000	0.0	0.0	-90.0
4	7.200	9.000	8.000	0.0	0.0	-90.0