

KEY

- ★ Affordable (rent) dwellings
- ★ Affordable (shared ownership) dwellings
- ★ Over 55s dwellings

Note: dwellings without a coloured asterisk are open market sale

Aqueduct easement (4m) and standoff (10m)

Mains water easement (2m)

Application boundary

Trees to be removed

NOTES

This drawing is based on the following information.

- Ordnance Survey
- Topographical Survey - 10502-106_2DT Rev B
- Transfer Plan - CR_W_CP01
- Ponds and Water Main As Built - URB/C231/WH-001
- Aqueduct - RED561-2000-G

Please see Civil Engineers drawings for proposed levels and retaining structure information

Houses are coloured to represent house types, as per the table below.
Detached garages are grey in colour

			GIA		Sub-total GIA		No.	Percent
Market Sale			ft ²	m ²	ft ²	m ²		
HT A	5B8P	2 Storey House	1,888	175.4	13,216	1,228	7	3.7%
HT B	4B7P	2 Storey House	1,617	150.2	38,802	3,605	24	12.8%
HT Ba	4B7P	2 Storey House	1,634	151.8	19,608	1,822	12	6.4%
HT C	3B6P	2 Storey House	1,623	150.8	9,738	905	6	3.2%
HT D	3B5P	2 Storey House	1,172	108.9	1,172	109	1	0.5%
HT E	4B8P	2 Storey House	1,371	127.3	8,224	764	6	3.2%
HT F	3B5P	2 Storey House	1,067	99.1	14,934	1,387	14	7.4%
HT G	3B5P	2 Storey House	1,067	99.1	8,534	793	8	4.3%
HT H	3B4P	2 Storey House	919	85.4	19,299	1,793	21	11.2%
HT H	3B4P Over 55s	2 Storey House	919	85.4	1,838	171	2	1.1%
HT J	2B3P	2 Storey House	763	70.9	15,259	1,418	20	10.6%
HT J	2B3P Over 55s	2 Storey House	763	70.9	1,526	142	2	1.1%
HT K	2B3P Over 55s	Bungalow	723	67.2	5,787	538	6	4.3%
Sub-Total					157,935	14,673	131	69.7%
Affordable Rent			ft ²	m ²	ft ²	m ²		
HT H	3B4P	2 Storey House	919	85.4	9,190	854	10	5.3%
HT H	3B4P Over 55s	2 Storey House	919	85.4	1,838	171	2	1.1%
HT J	2B3P	2 Storey House	763	70.9	4,578	425	6	3.2%
HT J	2B3P Over 55s	2 Storey House	763	70.9	763	71	1	0.5%
HT M	2B3P	Single Level Apartment	761	70.7	3,046	283	4	2.1%
HT M	2B3P Over 55s	Single Level Apartment	761	70.7	3,046	283	4	2.1%
HT N	1B2P	Single Level Apartment	1,306	121.3	1,306	121	1	0.5%
HT N	1B2P Over 55s	Single Level Apartment	1,306	121.3	1,306	121	1	0.5%
Sub-Total					25,072	2,329	29	15.4%
Shared Ownership			ft ²	m ²	ft ²	m ²		
HT H	3B4P	2 Storey House	919	85.4	11,028	1,025	12	6.4%
HT H	3B4P Over 55s	2 Storey House	919	85.4	3,676	342	4	2.1%
HT J	2B3P	2 Storey House	763	70.9	6,104	567	8	4.3%
HT J	2B3P Over 55s	2 Storey House	763	70.9	1,526	142	2	1.1%
HT L	2B3P Over 55s	Bungalow	677	62.9	1,354	126	2	1.1%
Sub-Total					23,688	2,201	28	14.9%
Totals for Site					206,696	19,203	188	100.0%
Market Sale							131	69.7%
Affordable Rent							29	15.4%
Shared Ownership							28	14.9%

	Acres	Hectares
Site Area (Gross)	25.40	10.28
Target Undeveloped Area (POS) 90% of 4.85 Ha	10.79	4.37
Achieved Undeveloped Area (POS)	10.80	4.37
Site Area (Net)	14.60	5.91

Unit Density:	13	Units / acre
	32	Units / hectare
Area Density:	14,153	ft ² / acre
	3,249	m ² / hectare

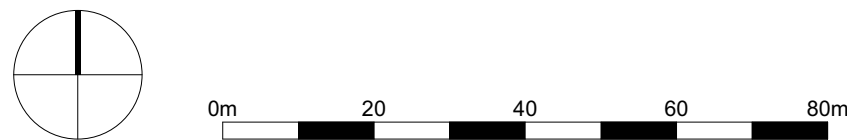
Mix		
Houses/Bungalows	Total	Percent
2 Bed	49	26.1%
3 Bed	80	42.6%
4 Bed	42	22.3%
5 Bed	7	3.7%
Sub-Total	178	94.7%
Apartments		
Bed	Total	Percent
1 Bed	2	1.1%
2 Bed	8	4.3%
Sub-Total	10	5.3%
Total	188	100.0%

Market Sale Mix		
Bed	Total	Percent
2 Bed	30	16.0%
3 Bed	52	27.7%
4 Bed	42	22.3%
5 Bed	7	3.7%
Total	131	43.6%

Affordable Mix		
Bed	Total	Percent
1 Bed	2	1.1%
2 Bed	15	8.0%
3 Bed	12	6.4%
Total	29	15.4%

Shared Ownership Mix		
Bed	Total	Percent
2 Bed	12	6.4%
3 Bed	16	8.5%
Total	28	14.9%

Total Mix		
Bed	Total	Percent
1 Bed	2	1.1%
2 Bed	57	30.3%
3 Bed	80	42.6%
4 Bed	42	22.3%
5 Bed	7	3.7%
Total	188	100.0%



CDM REGULATIONS 2015. All current drawings and specifications for the project must be read in conjunction with the Designer's Hazard and Environment Assessment Record. All intellectual property rights reserved.

Rev	Date	Description	Dwn	Ckd	Drawn	JC
T	25/03/21	Colours updated for clarity. HT D GIA updated	JA	SC	Checked	JM
U	24/05/21	Submitted for new full planning permission. Updates / new types: HT JA SC			Date	SEP 2018
		C, HT D, HT E, HT K. Arrangement of plots 82-84			Scale @ A1	1 : 1000

AA7403C Clitheroe Road
Whalley
PROPOSED UNIT MIX PLAN
(ROOF PLAN)

2011
REV U
PLANNING

PRP