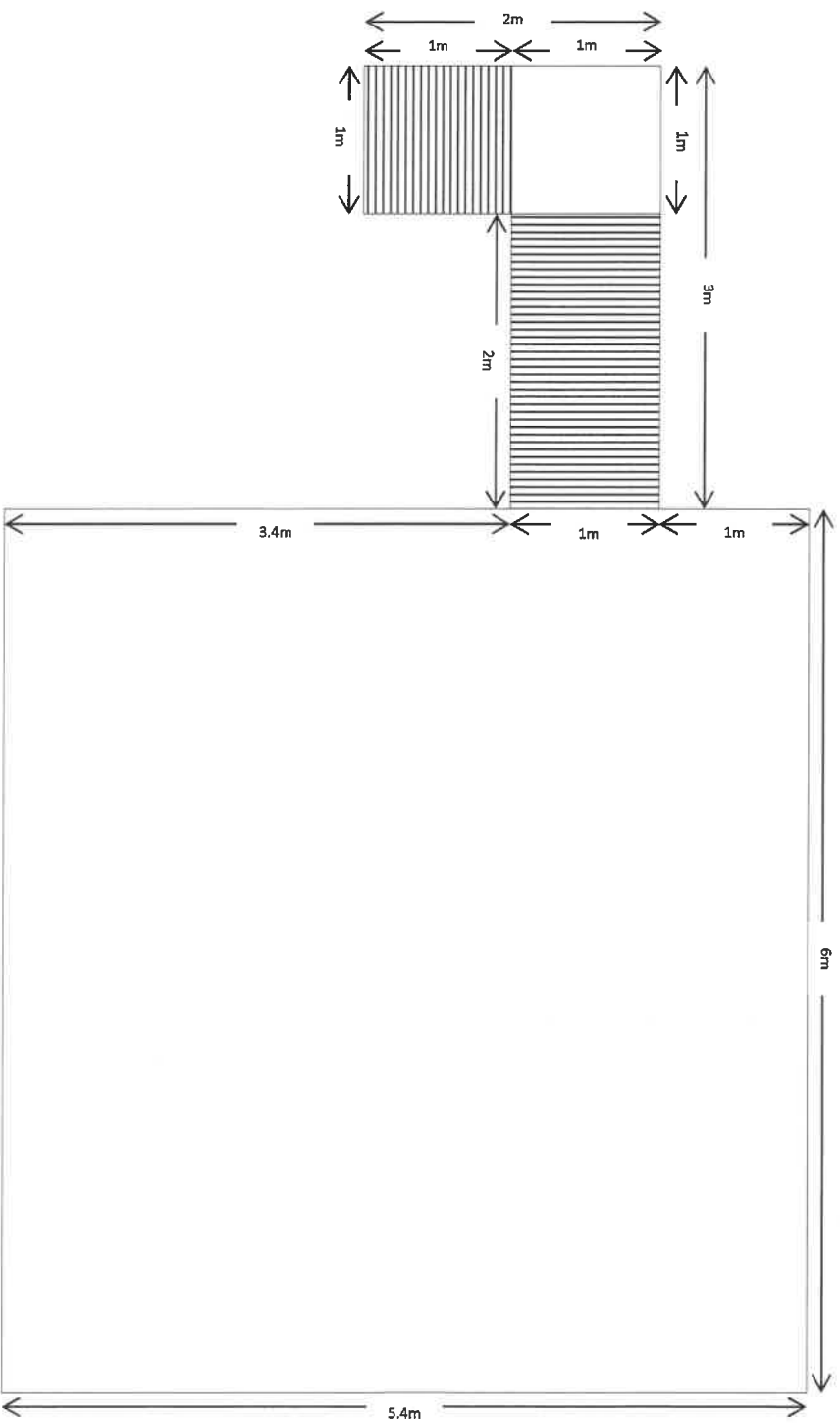


1, The Hazels, Wilpshire, Lancashire, BB1 9HZ

Scale 1:50

Plan View



Specification:

Decking to be 2x 18mm plywood cross jointed over 22.86cm x 5.08cm joists with spacing's centered at 33.02cm. With a total thickness of 58.86mm.

Balustrades to be 8mm safety glass with stainless steel posts fixed to manufactures specification.

Steps to be of a timber construction.

264. barnum

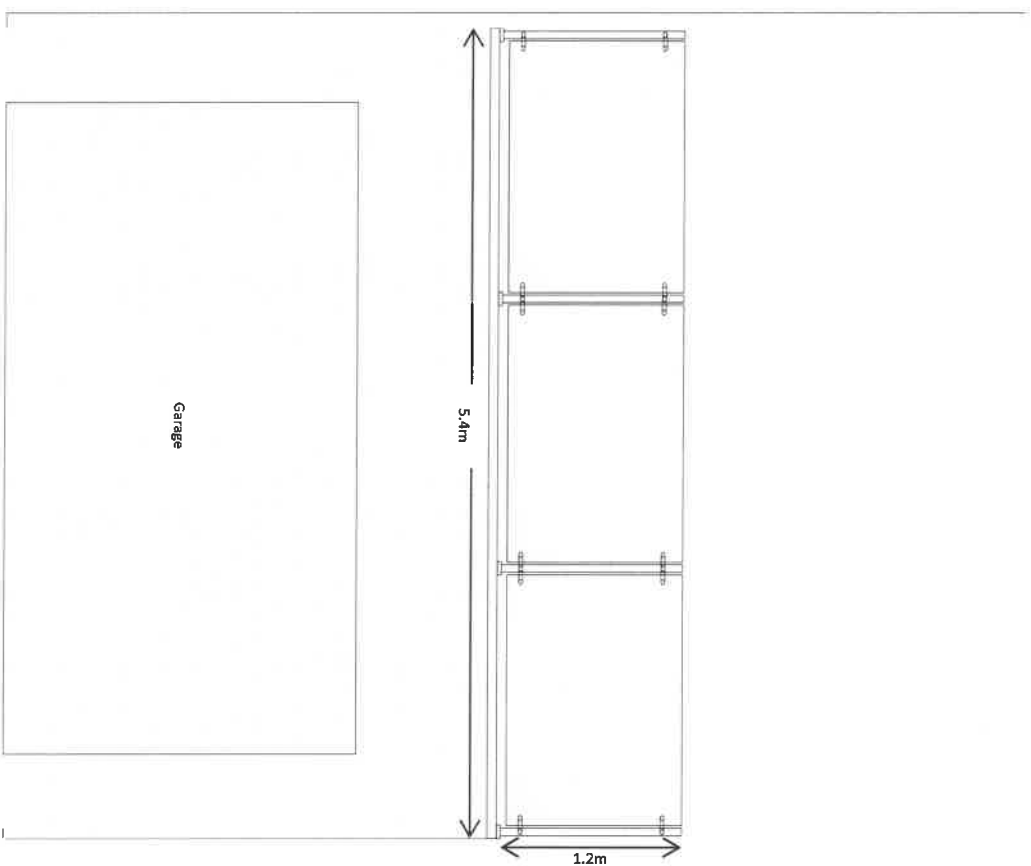
31202110785

1, The Hazels, Wilpshire, Lancashire, BB1 9HZ

Scale 1:50

Front View

312021/0785



Specification:

Decking to be 2x 18mm plywood cross jointed over 22.86cm x 5.08cm joists with spacing's centered at 33.02cm. With a total thickness of ~~50.8mm~~ 264.6mm.

Balustrades to be 8mm safety glass with stainless steel posts fixed to manufactures specification.

Steps to be of a timber construction.

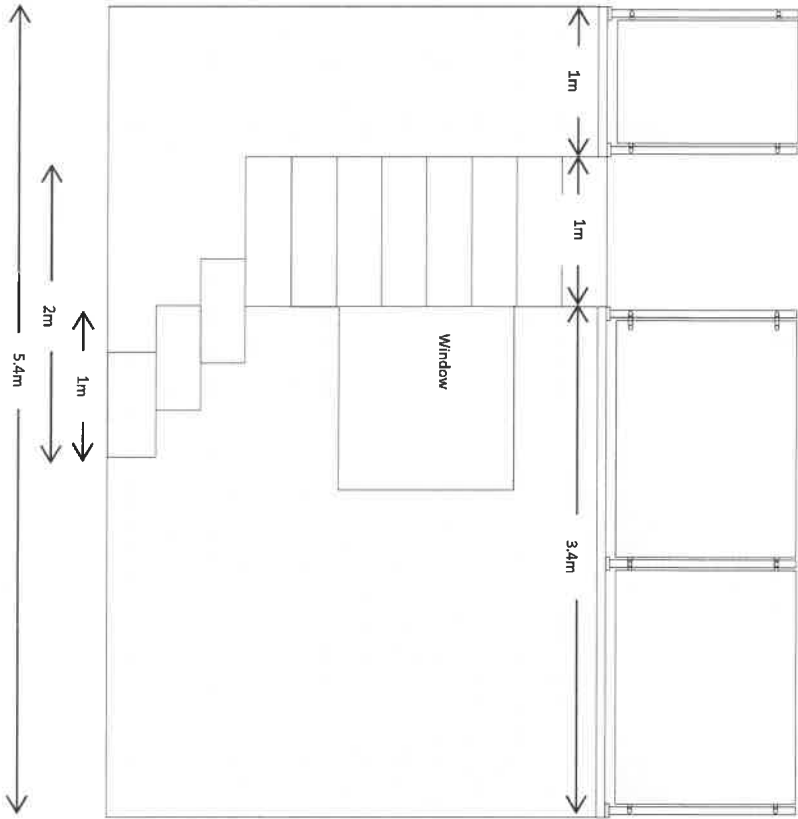
264.6mm

3/2021/0785

1, The Hazels, Wilpshire, Lancashire, BB1 9HZ

Scale 1:50

Rear View



Specification:

Decking to be 2x 18mm plywood cross jointed over 22.86cm x 5.08cm joists with spacing's centered at 33.02cm. With a total thickness of 58.86mm.

Balustrades to be 8mm safety glass with stainless steel posts fixed to manufactures specification.

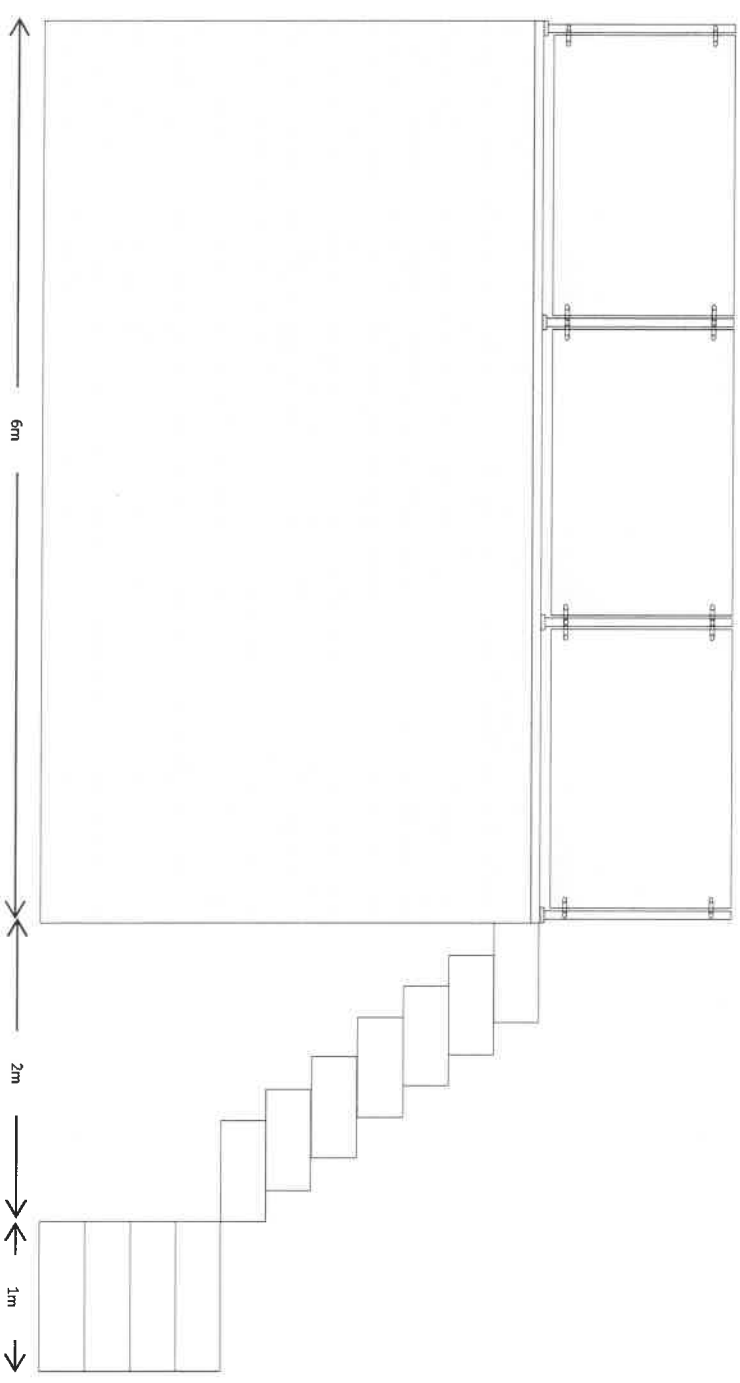
Steps to be of a timber construction.

Zb4. bww

1, The Hazels, Wilpshire, Lancashire, BB1 9HZ

Scale 1:50

Side View



Specification:

Decking to be 2x 18mm plywood cross jointed over 22.86cm x 5.08cm joists with spacing's centered at 33.02cm. With a total thickness of 58.86mm.

Balustrades to be 8mm safety glass with stainless steel posts fixed to manufactures specification.

Steps to be of a timber construction.

264.6mm