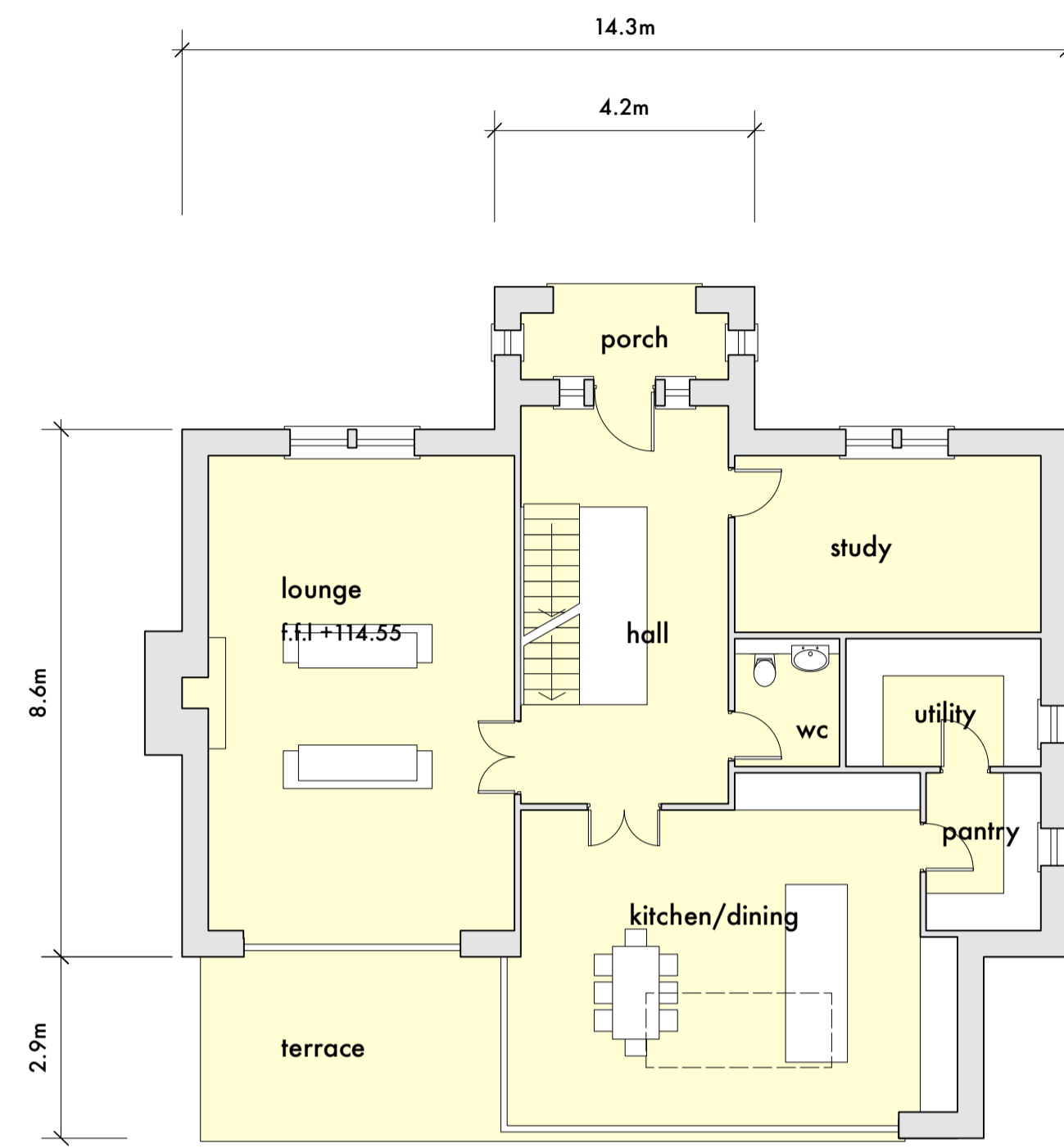


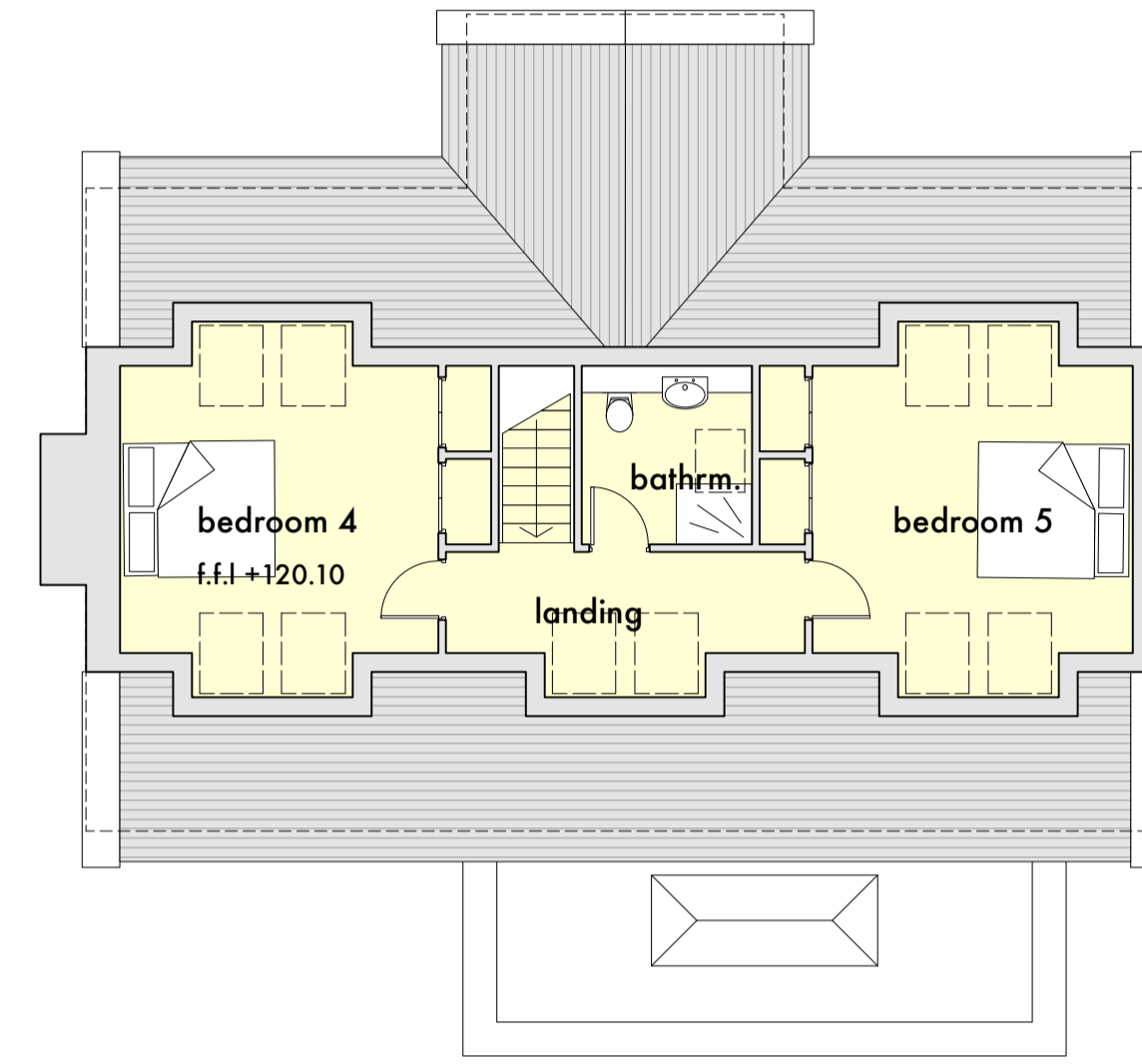
Stanton Andrews do not accept liability for any loss or degradation of information held in the drawing resulting from the translation from the original file format to any other file format or from the recipient's reading of it in any other programme or on an earlier version of the programme. Stanton Andrews accept no liability for use of this drawing by parties other than the party for whom it was prepared or for purposes other than those for which it was prepared.

DWG issues - when this drawing is issued in DWG format it is an uncontrolled version and is provided to enable the recipient to prepare its own documents/drawings for which it is solely responsible. It is based on background information current at the time of issue. Stanton Andrews accept no liability for any alterations, additions to or discrepancies arising out of changes to such background information which occur after it has been issued by Stanton Andrews.

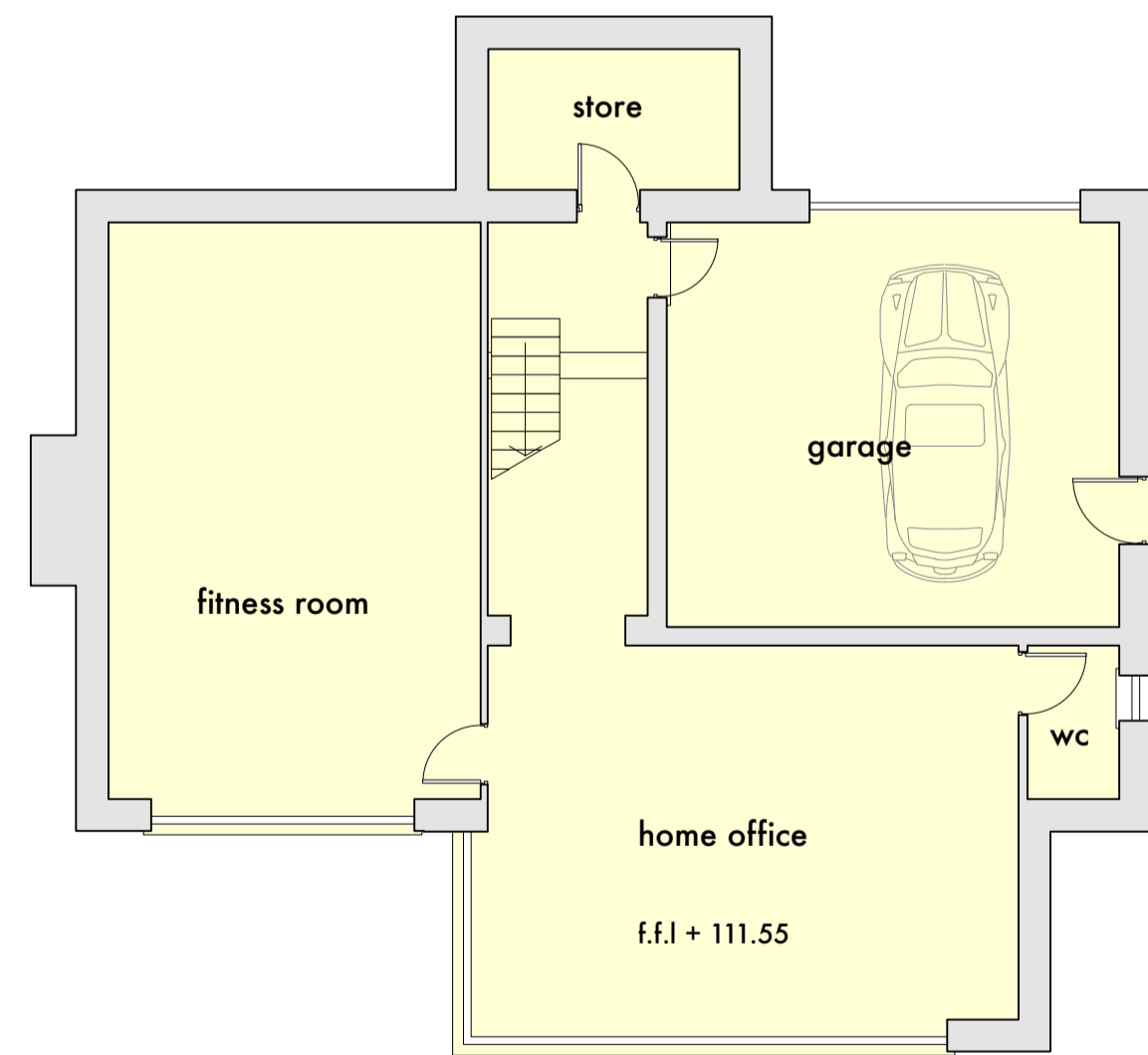
revision	date	note
A	28.05.19	issued for planning
B	03.08.21	planning
C	09.11.21	planning application



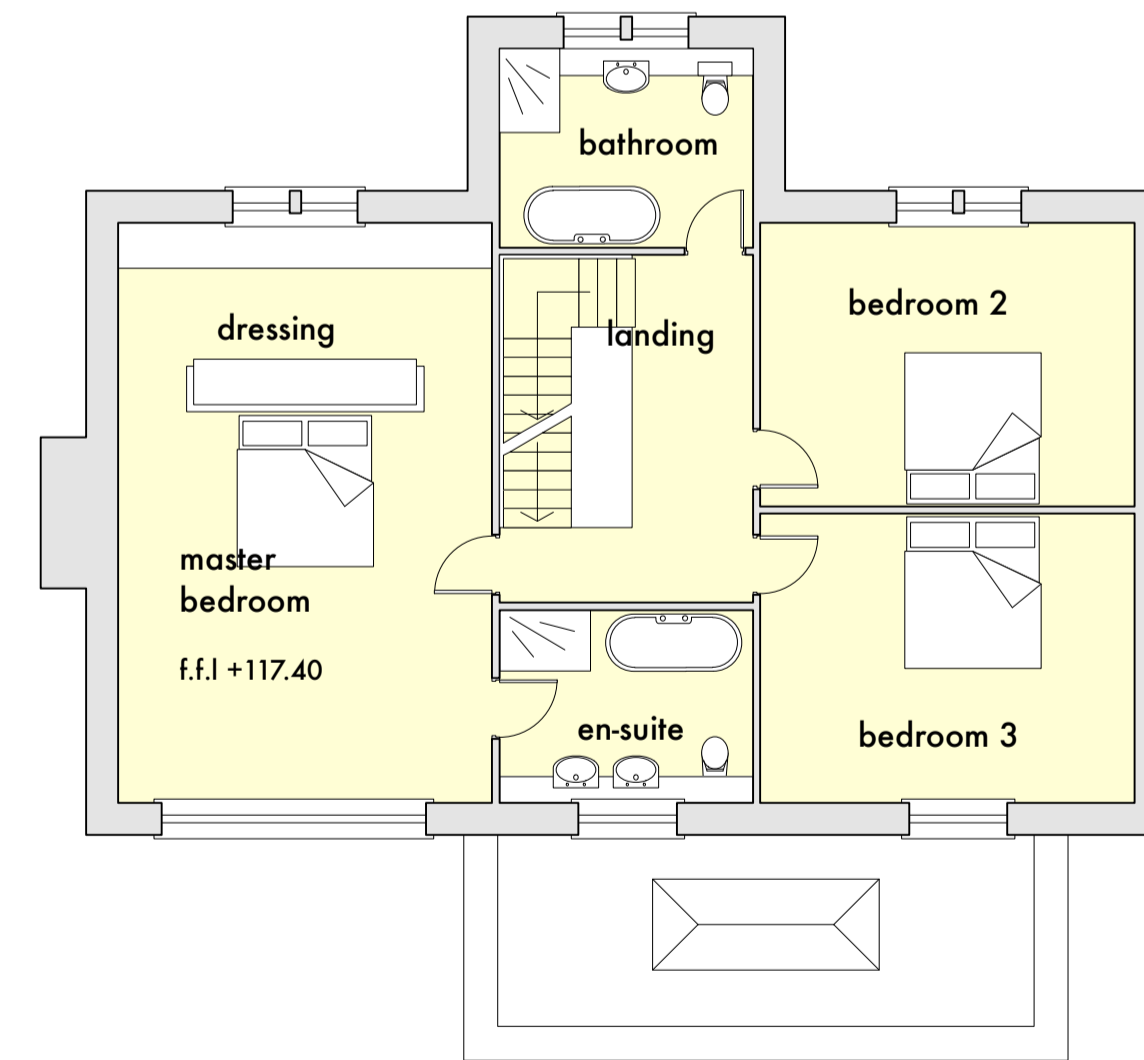
ground floor



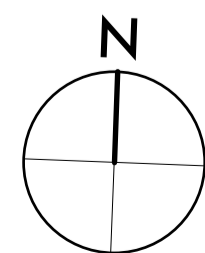
second floor



lower ground floor



first floor



0m 10m scale

**SA** stanton andrews architects

44 york street clitheroe BB7 2DL  
t. 01200 444490 e. mail@stantonandrews.co.uk w. stantonandrews.co.uk

project **11 old road** project number **1909**

name **proposed plans**

scale **1 to 100 @ A1** date **october 21** type **planning**



**03**

revision **C**