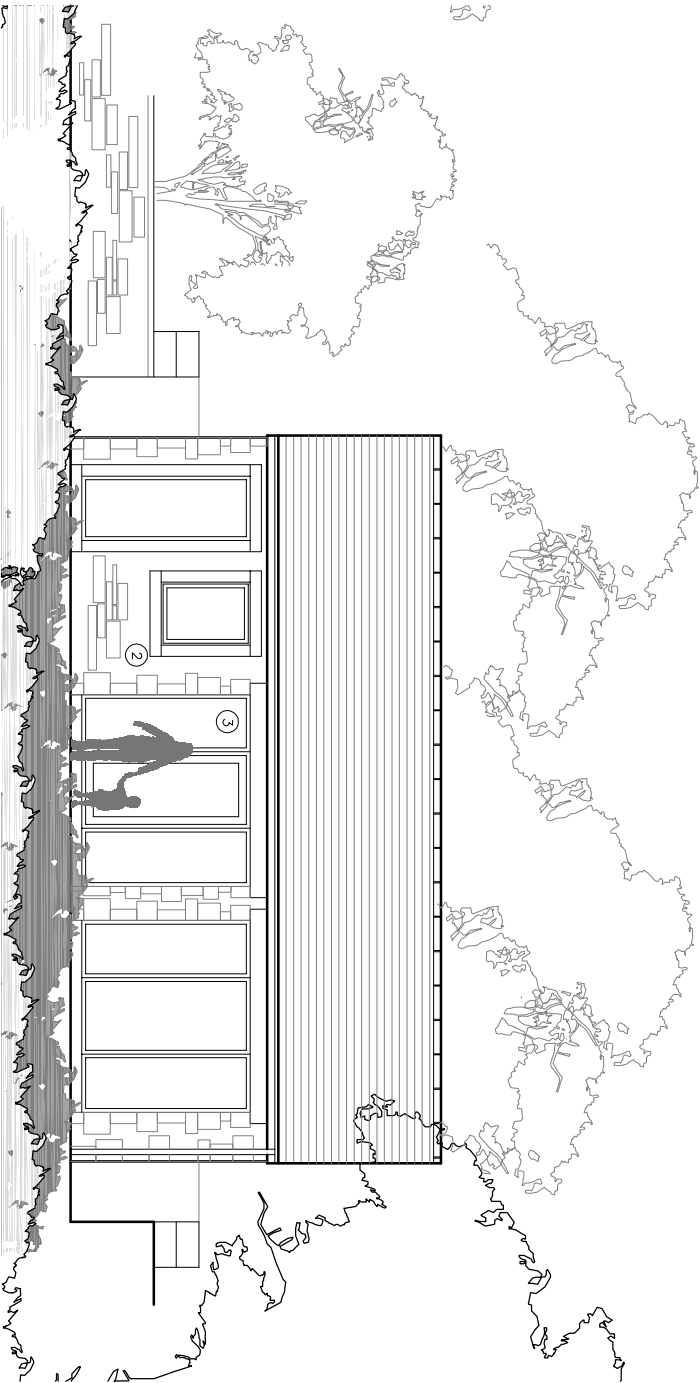
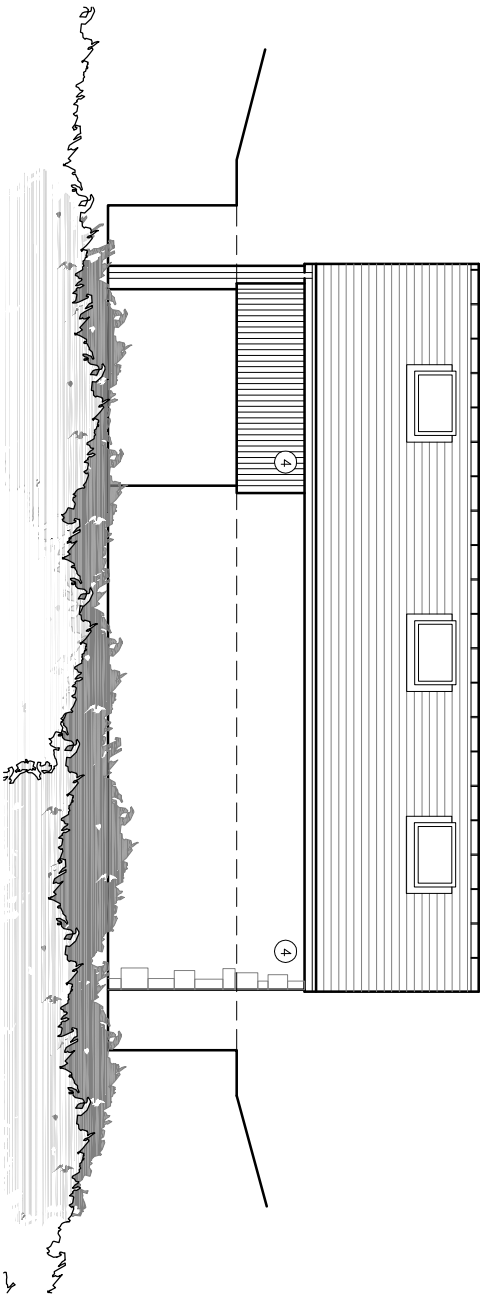


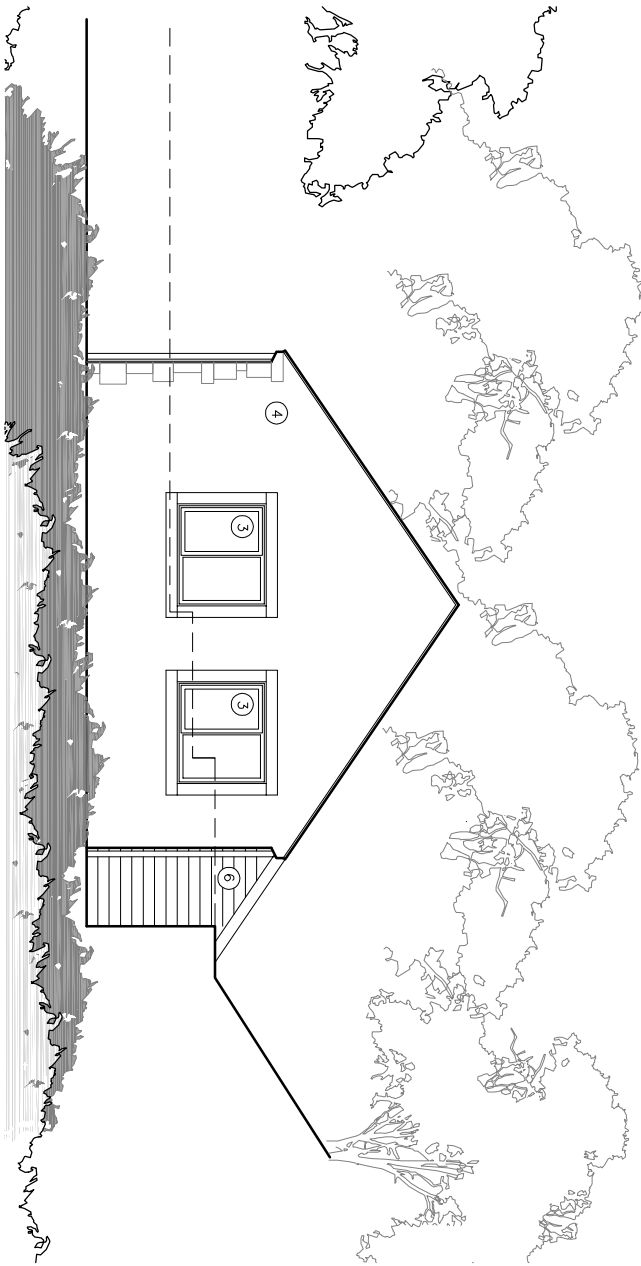
PROPOSED ELEVATION 1



PROPOSED ELEVATION 2



PROPOSED ELEVATION 3



PROPOSED ELEVATION 4

MATERIALS

1. NATURAL BLUE/GREY SLATE
2. NATURAL RANDOM COURSED STONE
3. TIMBER WINDOWS/DOORS
4. ROUGH CEMENT RENDER
5. CORRUGATED SHEETING
6. TIMBER CLADDING

©www.qwarchitects ltd 2020 | This Drawing is to be used in conjunction with all other project associated drawings and information. Do not scale from this drawing. Reproduction of this drawing without prior written permission of the architects is prohibited. This drawing is copyright of the architects. ltd

<div><div><div>qww+q</div><div>architects</div></div><div><div>Private Residential Housing Commercial Conservation Domestic</div><div>Tel: 01254 485848</div><div>Email: info@qwarchitects.com Web: www.qwarchitects.com</div></div><div><div>The Annex</div><div>Lowerfold Farm</div><div>Oxwoldwistle</div><div>B854QA</div></div><div><div>Architects Registration Board</div></div></div>		Client MARY_BRILL		Scale 1:100		Sheet Size A3		Job Number 21-078		Drawn By AW		Checked AW	
Project VICTORIA_HOUSE WORSTON		Drawing Title PROPOSED_ELEVATIONS		Drawing Status PLANNING		Drawing Number PL/07		Revision -		First Issue			