

TREE SURVEY

arboricultural constraints appraisal undertaken by Bowland Tree Consultancy Ltd. resume as follows :-

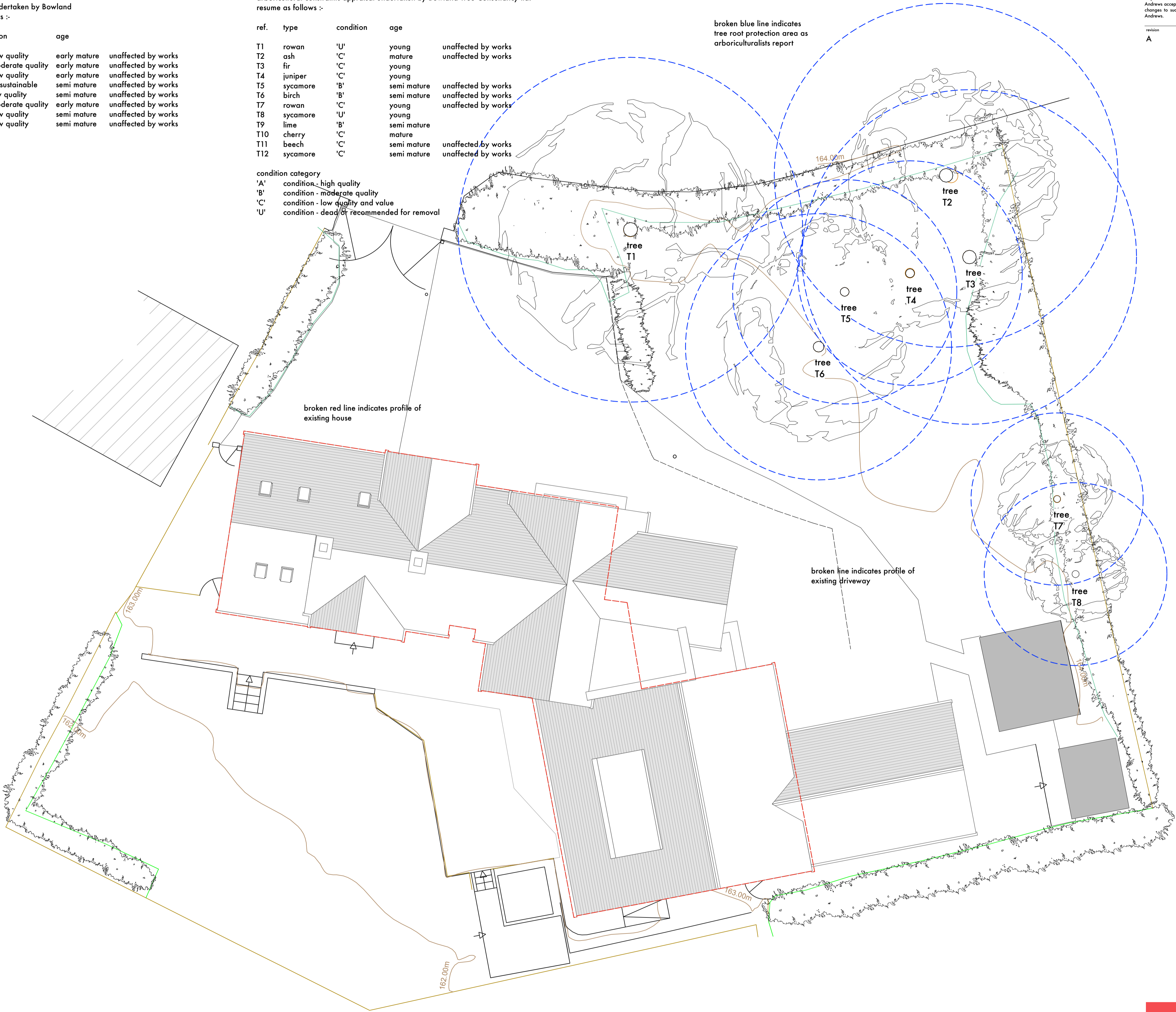
ref.	tree	condition	age	
T1	common ash	'C' - low quality	early mature	unaffected by works
T2	common beech	'B' - moderate quality	early mature	unaffected by works
T3	common ash	'C' - low quality	early mature	unaffected by works
T4	sycamore	'U' - unsustainable	semi mature	unaffected by works
T5	sycamore	'C' - low quality	semi mature	unaffected by works
T6	sycamore	'B' - moderate quality	early mature	unaffected by works
T7	sycamore	'C' - low quality	semi mature	unaffected by works
T8	common ash	'C' - low quality	semi mature	unaffected by works

TREE SURVEY

arboricultural constraints appraisal undertaken by Bowland Tree Consultancy Ltd. resume as follows :-

ref.	type	condition	age	
T1	rowan	'U'	young	unaffected by works
T2	ash	'C'	mature	unaffected by works
T3	fir	'C'	young	
T4	juniper	'C'	young	
T5	sycamore	'B'	semi mature	unaffected by works
T6	birch	'B'	semi mature	unaffected by works
T7	rowan	'C'	young	unaffected by works
T8	sycamore	'U'	young	
T9	lime	'B'	semi mature	
T10	cherry	'C'	mature	
T11	beech	'C'	semi mature	unaffected by works
T12	sycamore	'C'	semi mature	unaffected by works

condition category	
'A'	condition - high quality
'B'	condition - moderate quality
'C'	condition - low quality and value
'U'	condition - dead or recommended for removal



broken blue line indicates tree root protection area as arboriculturalists report

broken red line indicates profile of existing house

broken line indicates profile of existing driveway

Stanton Andrews do not accept liability for any loss or degradation of information held in the drawing resulting from the translation from the original file format to any other file format or from the recipient's reading of it in any other programme or on earlier version of the programme. Stanton Andrews accept no liability for use of this drawing by parties other than the party for whom it was prepared or for purposes other than those for which it was prepared.

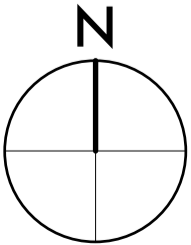
Do not scale, use figured dimensions only. All dimensions to be checked on site. This drawing should be printed and read at the original size, as stated in this block. Stanton Andrews accept no responsibility for errors that occur as a result of reviewing this drawing at any other size. Stanton Andrews to be notified of any discrepancies before proceeding.

DWG issues - when this drawing is issued in DWG format it is an uncontrolled version and is provided to enable the recipient to prepare its own documents/drawings for which it is solely responsible. It is based on background information current at the time of issue. Stanton Andrews accept no liability for any alterations to, additions to or discrepancies arising out of changes to such background information which occur after it has been issued by Stanton Andrews.

This drawing must be printed in colour, if this text is not RED the drawing must be reprinted.

Drawing is to be read in conjunction with all relevant consultants and specialists drawings. 'As existing' drawings based on information provided by others - no measured survey of the property has been undertaken by the architect. This drawing is subject to copyright.

revision	date	note
A	march 22	planning



0m 10m scale



stanton andrews
architects

44 york street clitheroe BB7 2DL
t. 01200 444490 e. mail@stantonandrews.co.uk w. stantonandrews.co.uk

project
29 mellor brow

project number
21.46

proposed site plan

scale
1 to 100 @ A1

date
march 22

status
planning

revision
A

drawing number
PL.04



Chartered Practice