

Kirk House

Kirk

0.91m
F Cam

GENERAL NOTES

- 1. DRAWINGS ARE TO BE READ IN CONJUNCTION WITH ALL RELEVANT SPECIFICATIONS, ENGINEERS, ARCHITECTS & SERVICES DRAWINGS, INCLUDING APPROVED BUILDERS WORK DRAWINGS. CONTRACTOR TO NOTIFY ENGINEER OF DISCREPANCIES BETWEEN STRUCTURAL DRAWINGS AND SPECIFICATIONS OR OTHER DRAWINGS.
- 2. ALL DIMENSIONS ARE IN MILLIMETRES UNLESS NOTED OTHERWISE.
- 3. DO NOT SCALE FROM THIS DRAWING. WORK TO DIMENSIONS OR CO-ORDINATES PROVIDED. ALL LEVELS ARE IN METRES AND ALL DIMENSIONS ARE IN MILLIMETRES, UNLESS OTHERWISE NOTED. ANY AMBIGUITIES, OMISSIONS AND ERRORS ON DRAWINGS, SHALL BE BROUGHT TO THE ENGINEERS ATTENTION IMMEDIATELY.
- 4. INFORMATION CONTAINED ON THIS DRAWING IS SCHEME DESIGN ONLY AND REQUIRES FURTHER DETAILED DESIGN AND CO-ORDINATION WITH THE CONTRACTOR, DESIGN TEAM AND APPROPRIATE SUB-CONTRACTORS.

KEY

- EXISTING OPEN WATERCOURSE
- EXISTING CULVERTED WATERCOURSE
- EXISTING FOUL WATER DRAINAGE RUN
- PROPOSED SURFACE WATER DRAINAGE RUN
- LAND DRAIN BELOW PERMEABLE DRIVE TO DISCHARGE INTO WATERCOURSE
- PROPOSED FOUL WATER DRAINAGE RUN
- EXISTING FOUL WATER MANHOLE
- PROPOSED SURFACE WATER MANHOLE
- PROPOSED FOUL WATER MANHOLE
- SITE BOUNDARY

SURFACE WATER DRAINAGE

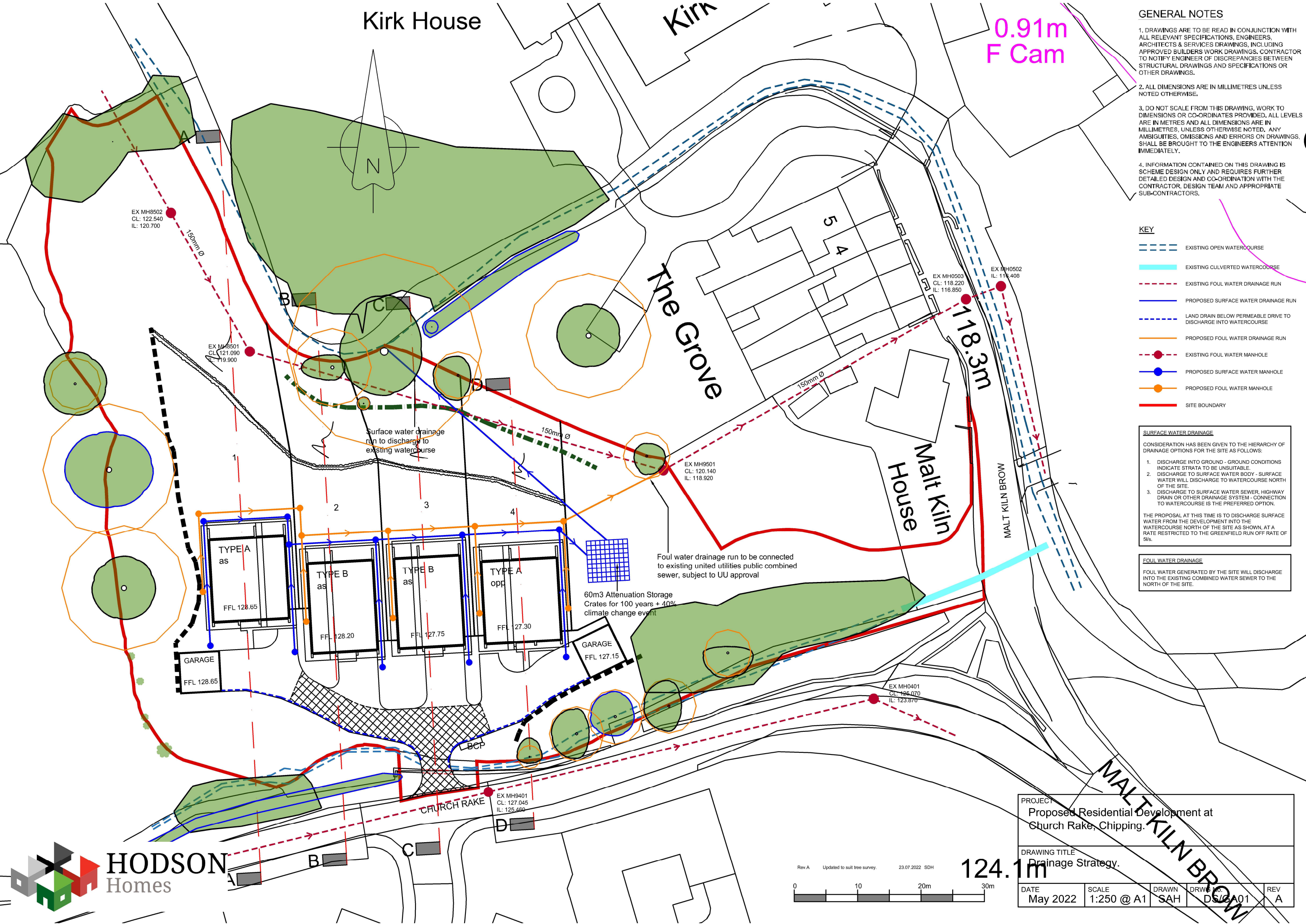
CONSIDERATION HAS BEEN GIVEN TO THE HIERARCHY OF DRAINAGE OPTIONS FOR THE SITE AS FOLLOWS:

- DISCHARGE INTO GROUND - GROUND CONDITIONS INDICATE STRATA TO BE UNSUITABLE.
- DISCHARGE TO SURFACE WATER BODY - SURFACE WATER WILL DISCHARGE TO WATERCOURSE NORTH OF THE SITE.
- DISCHARGE TO SURFACE WATER SEWER, HIGHWAY DRAIN OR OTHER DRAINAGE SYSTEM - CONNECTION TO WATERCOURSE IS THE PREFERRED OPTION.

THE PROPOSAL AT THIS TIME IS TO DISCHARGE SURFACE WATER FROM THE DEVELOPMENT INTO THE WATERCOURSE NORTH OF THE SITE AS SHOWN, AT A RATE RESTRICTED TO THE GREENFIELD RUN OFF RATE OF 5/s.

FOUL WATER DRAINAGE

FOUL WATER GENERATED BY THE SITE WILL DISCHARGE INTO THE EXISTING COMBINED WATER SEWER TO THE NORTH OF THE SITE.

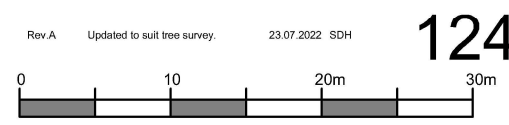


PROJECT
Proposed Residential Development at Church Rake, Chipping.

DRAWING TITLE
Drainage Strategy.

Rev A Updated to suit tree survey. 23.07.2022 SDH

DATE May 2022 SCALE 1:250 @ A1 DRAWN SAH DRWING DS/GA01 REV A



MALT KILN BROW