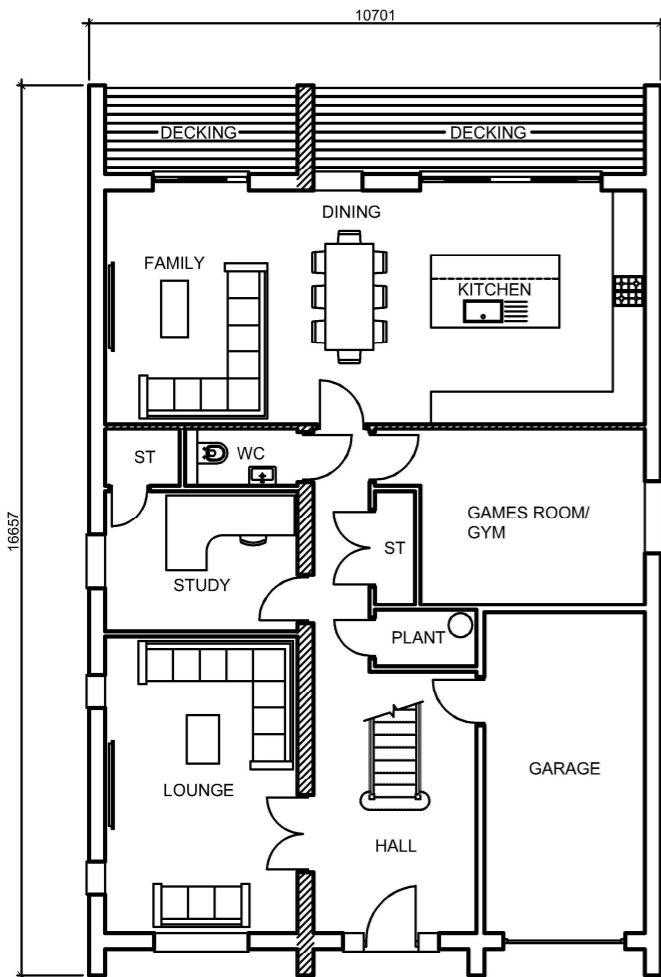


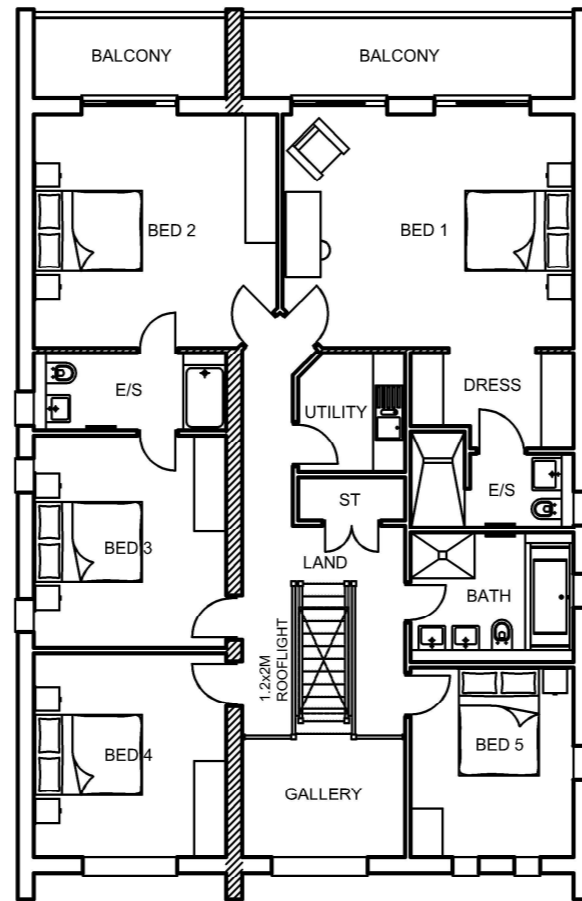
FRONT ELEVATION

SIDE ELEVATION

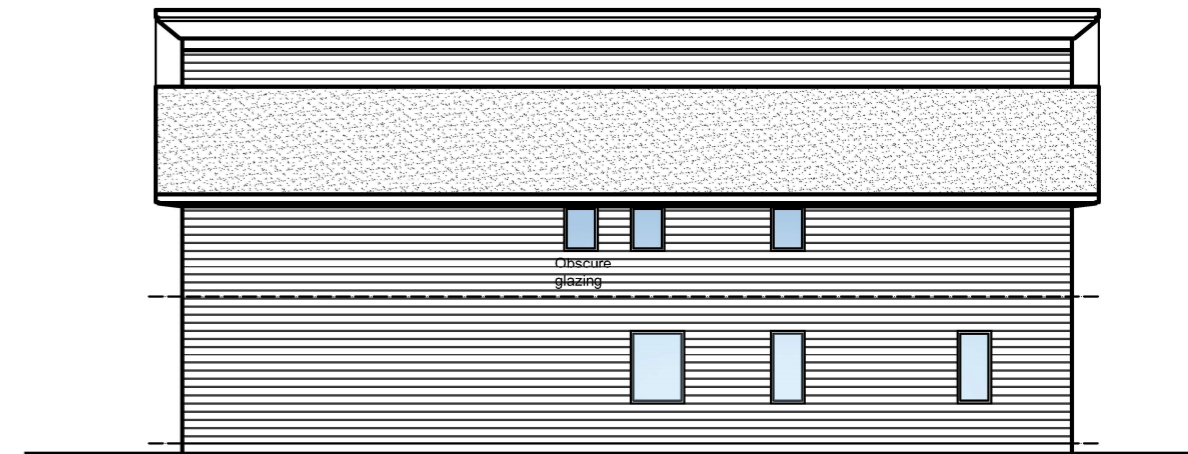
REAR ELEVATION



GROUND FLOOR PLAN



FIRST FLOOR PLAN



SIDE ELEVATION



REV. A - SIDE ELEVATION WINDOWS REMOVED. SAH 23.07.22

		HODSON HOMES LIMITED 20 WOOD BEECH GARDENS CLAYTON-LE-WOODS CHORLEY PR6 7FH		
PROJECT Proposed Residential Development at Malt Kiln Brow, Chipping. House Type B (2812 sq.ft.)				
DRAWING TITLE Proposed Floor Plans & Elevations.				
DATE	SCALE	DRAWN	DRWG No.	REV
May 2022	1:100 @ A2	SAH	HTB/P02	A