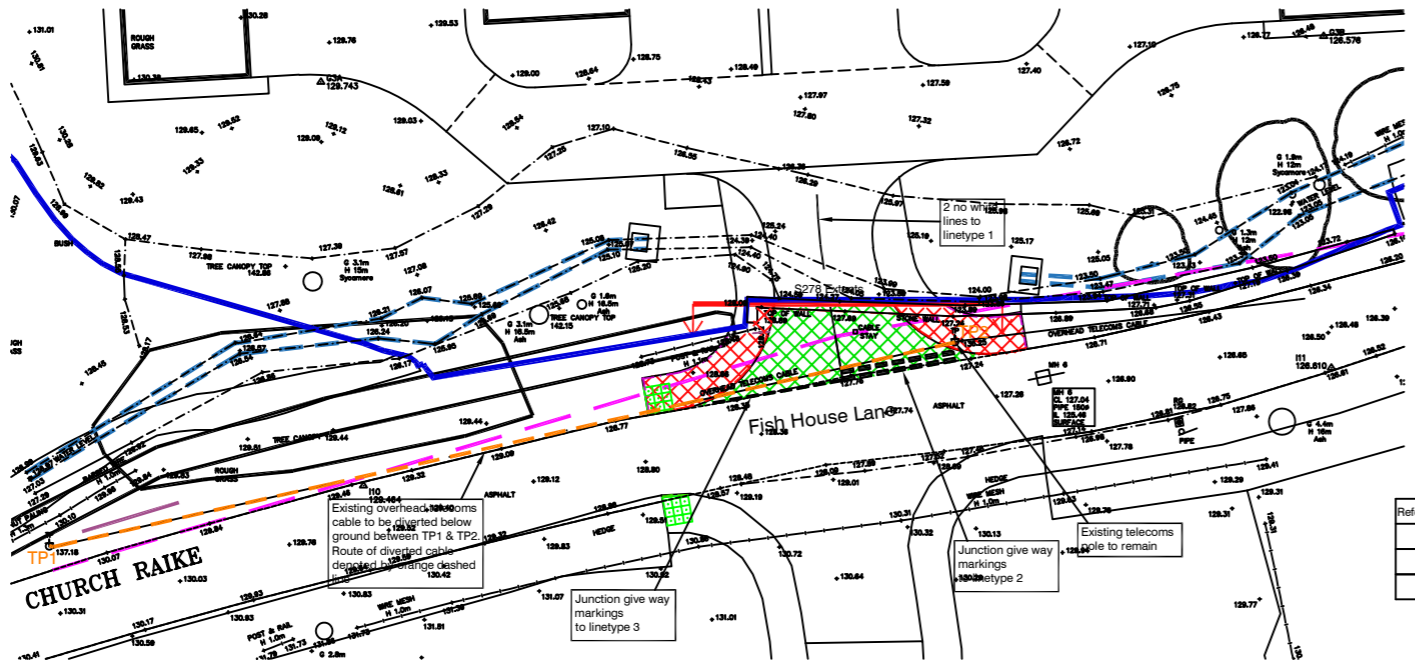
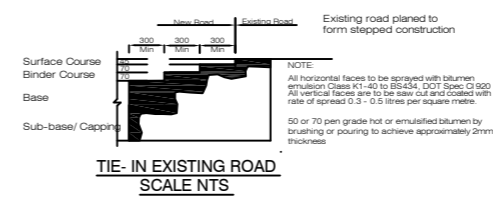


NOTES

1. All dimensions are in millimetres unless otherwise shown
2. All highway works shall be in accordance with the LCC 'Specification of Construction of Highway Works.'
3. All traffic signs and road markings to be in accordance with the TSRGD General Directions 2016

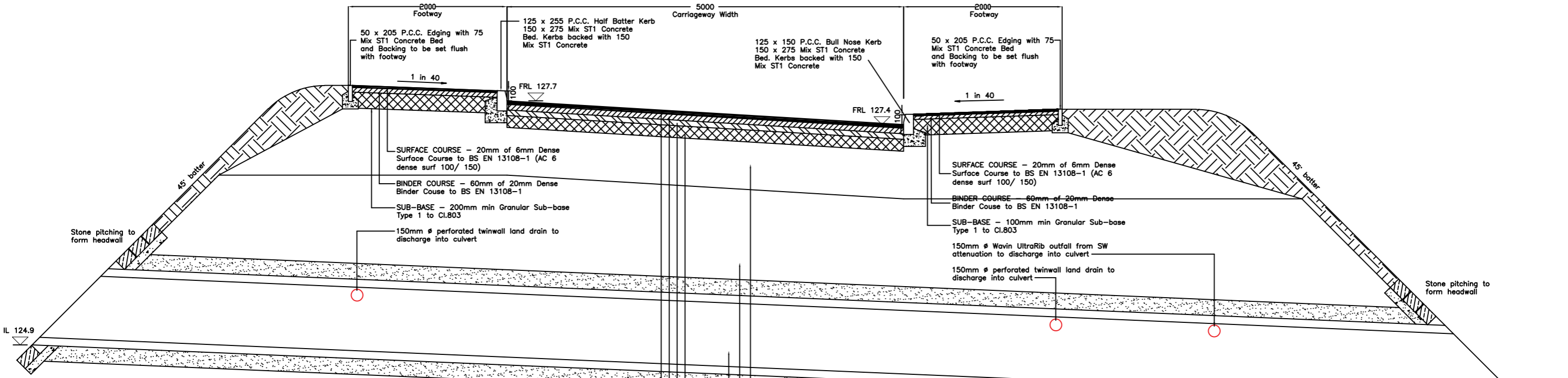
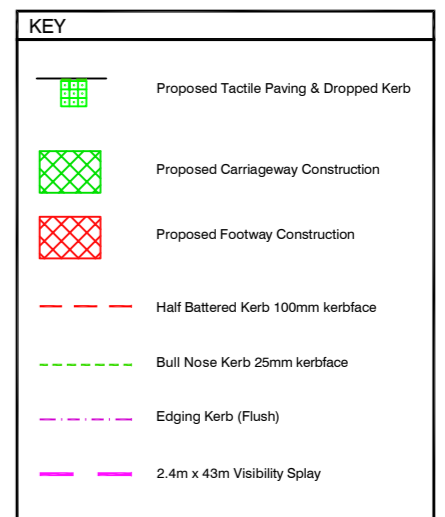


**PROPOSED SECTION 278 WORKS
GENERAL ARRANGEMENT
Scale 1:200**



Reference	Type	Diag.	Length	Gap	Width
1	Longitudinal	1004	4000	2000	100
2	Transverse	1003	600	300	200
3	Transverse	1009	600	300	100

White Lining Table



**ACCESS ROAD DETAIL
SCALE 1:25**

SURFACE COURSE - 45mm of Rolled Asphalt (recipe mix) to BS594987:2007 Table 6B HRA 30 /14 F surf. Coarse Aggregate in accordance with BS EN 13043 excluding limestone & gravel. Fine aggregate shall be sand to BS EN 13043. 40 /60 pen Binder to BS EN 12591. 14mm nom size coated chippings to BS EN 13108: Part 4 with min PSV of 60. The chippings to be applied at a rate of 9.0 +/- 1.0kg/m2 & rolled to obtain a textured surface.

BINDER - 70mm of 20mm size HDM binder course to BS EN 13108: Part 1 with 100 /150 pen bitumen.

BASE - 70mm of 20mm size dense base course to BS EN 13108: Part 1 with 100 /150 pen bitumen.

SUB-BASE - 150mm Granular Sub-base Type 1 to Cl.803

CAPPING LAYER - 600mm 6F2.

TRENCHFILL - 6F2 fill over culvert.

NEW CULVERT - 1200MMØ twin wall pipe laid in min. 200mm pipe bedding

- B Culvert increased from 900mmØ to 1200mmØ, S278 entrance moved slightly left & telecoms cable diverted below ground. 12.01.2023
- A Attenuation outfall & land drain connections identified on culvert. 30.10.2022



PROJECT Proposed Residential Development at Malt Kiln Brow, Chipping.				
DRAWING TITLE S278 Highway Works - General Arrangement				
DATE Aug 2022	SCALE As Shown	DRAWN SDH	DRWG No. MKB/P07	REV B