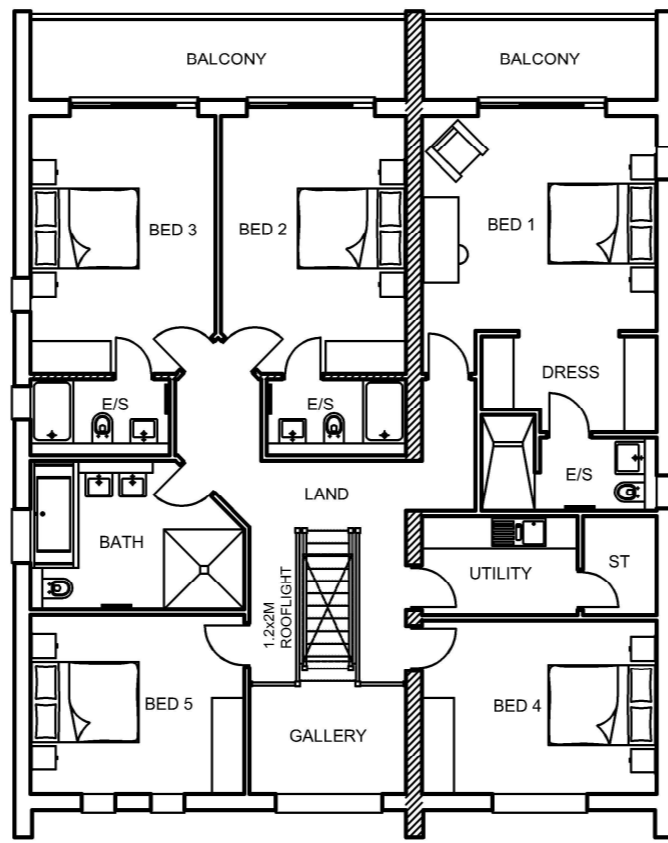
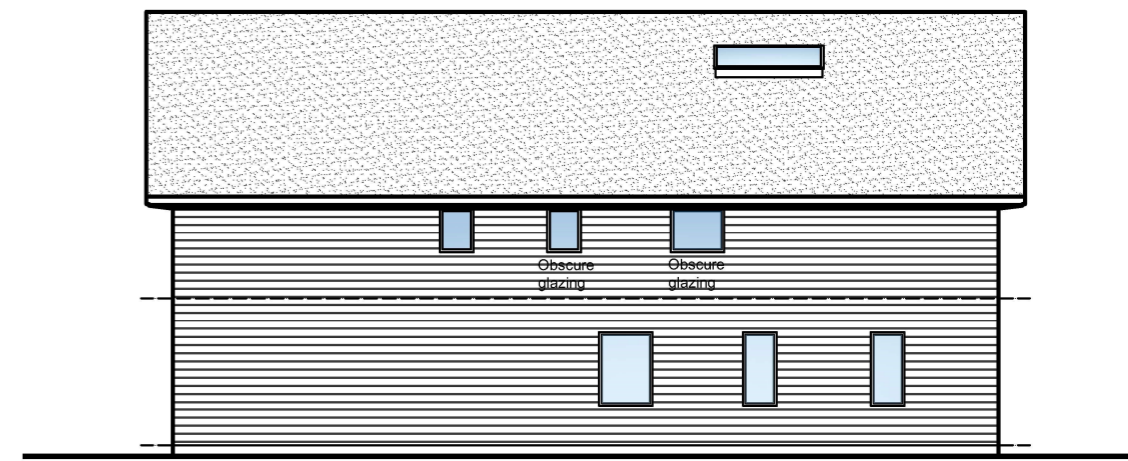


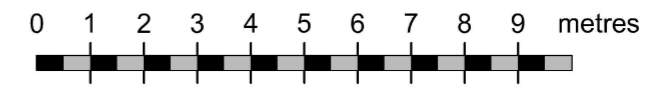
GROUND FLOOR PLAN



FIRST FLOOR PLAN



SIDE ELEVATION



HODSON
Homes

HODSON HOMES LIMITED
20 WOOD BEECH GARDENS
CLAYTON-LE-WOODS
CHORLEY
PR6 7FH

PROJECT
Proposed Residential Development at
Malt Kiln Brow, Chipping.
House Type A (3202 sq.ft.)

DRAWING TITLE
Proposed Floor Plans & Elevations.

| | | | | |
|------------------|---------------------|--------------|---------------------|-----|
| DATE May 2022 | SCALE 1:100 @ A2 | DRAWN SAH | DRWG No. HTA/P01 | REV |
|------------------|---------------------|--------------|---------------------|-----|