



NEW SPRINKLER TANK TO REPLACE THE EXISTING IN THE SAME LOCATION.

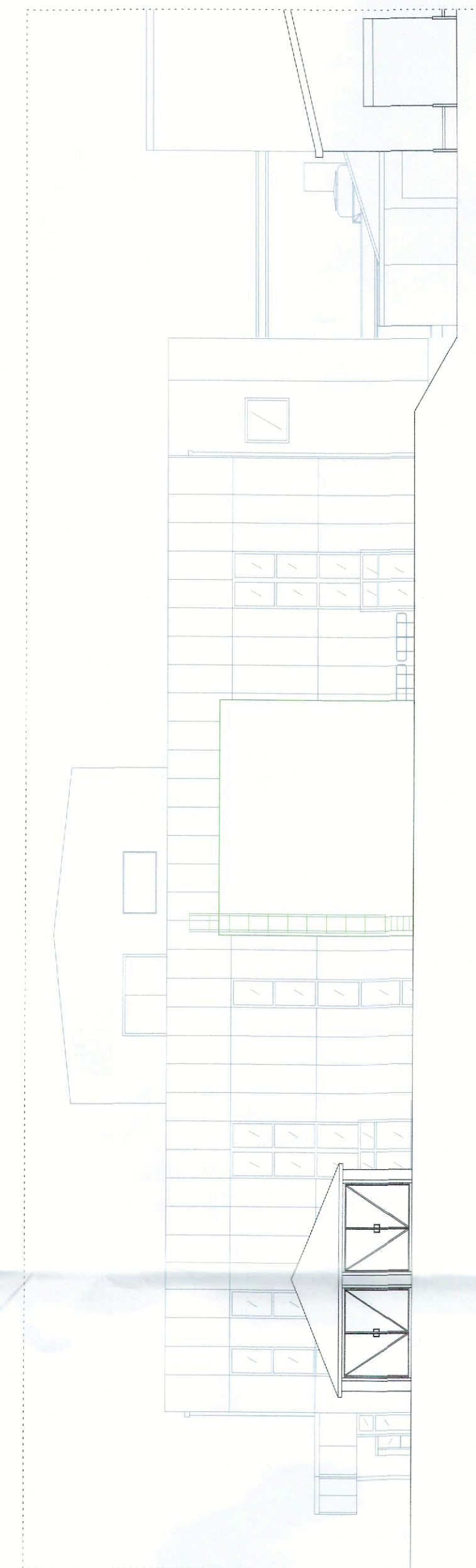
Tank

9.930

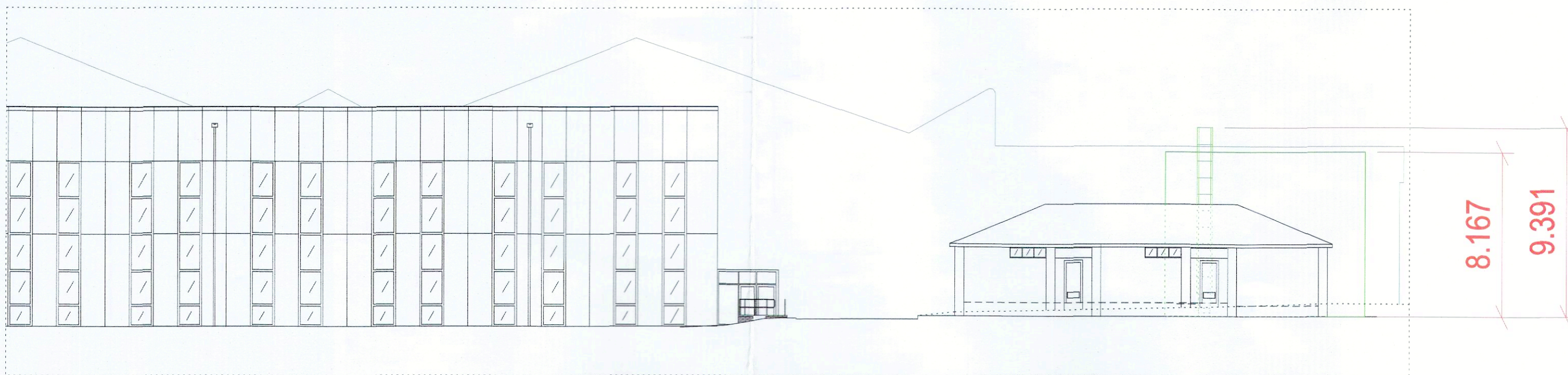
B

SITE AREA CONCERNED

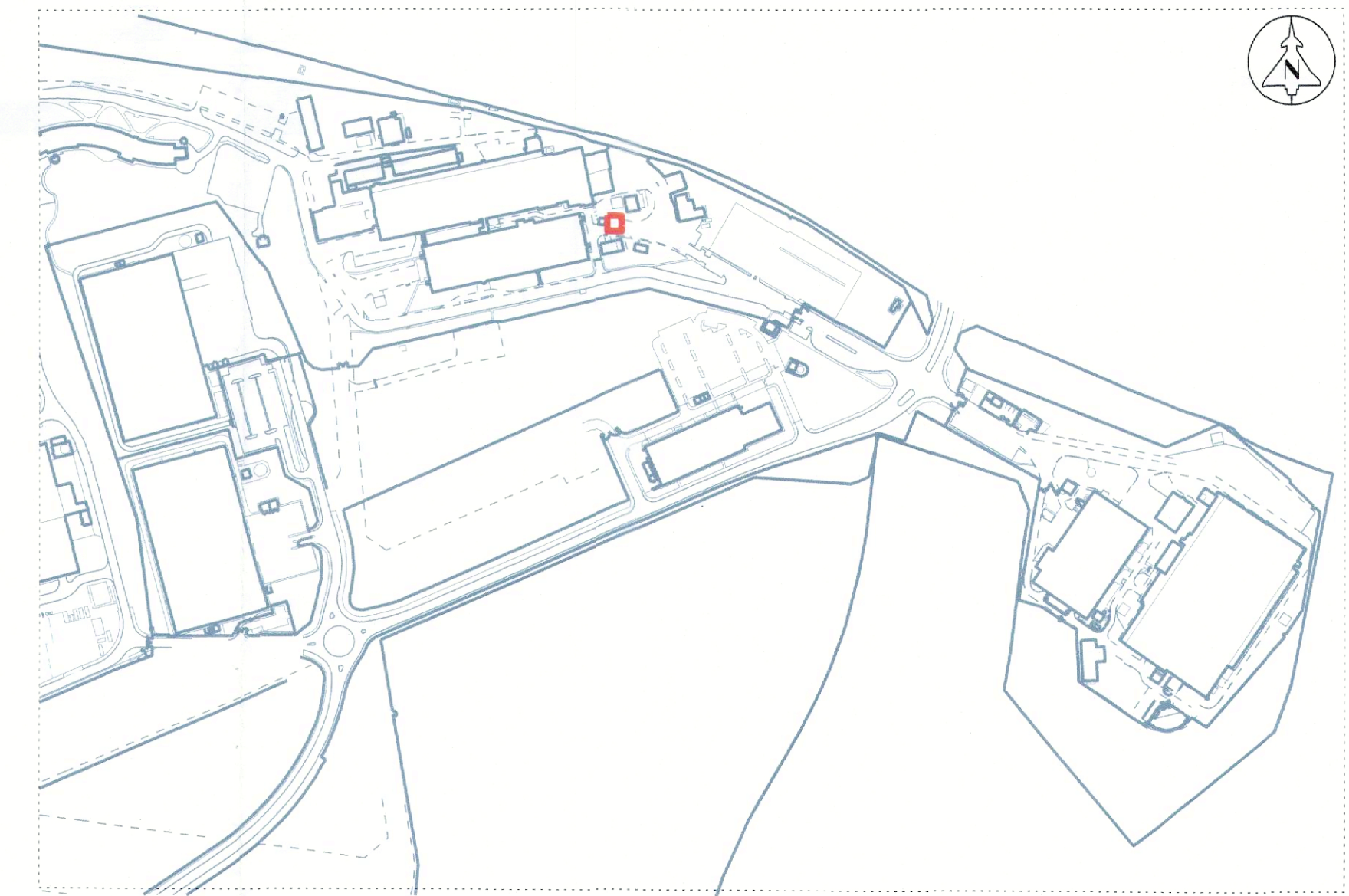
A



EAST ELEVATION - B



SOUTH ELEVATION - A



SAMLESBURY EAST SITE LOCATION PLAN
1:5000 @ A1 1:200

No part of this drawing may be copied or reproduced or any information contained on this drawing given to a third party without the prior written permission of:

Facilities Management - Air
BAE Systems (Operations) Ltd.

This drawing contains information, as held on the Facilities Management CAD System at the date of printing only... 26/05/2022

Rev.	Description	Date
A	PLANNING DRAWING ISSUE.	24-05-22

Code	Suitability Description
Status	Purpose of Issue

Facilities Management - Air

BAE SYSTEMS
SAMLESBURY AERODROME
BLACKBURN
LANCASHIRE
BB2 7LF
Tel: 03300 476166



Samlesbury Site © BAE Systems (Operations) Ltd. All rights reserved

Project
22S0001 - MISCELLANEOUS PROJECTS

Title
3A SPRINKLER TANK REPLACEMENT
PLANNING APPLICATION - SITE LOCATION PLAN

Drawn By	Checked By	Date
A CULLEN		23/05/22

Scale	Project/Sheet Number
1:200 @ A1 <small>Printed at 1:0.200 m/mm</small>	22S0001 / 024

Drawing Number	Rev.
22S0001DG_024	A