

Schwegler Bat

4441

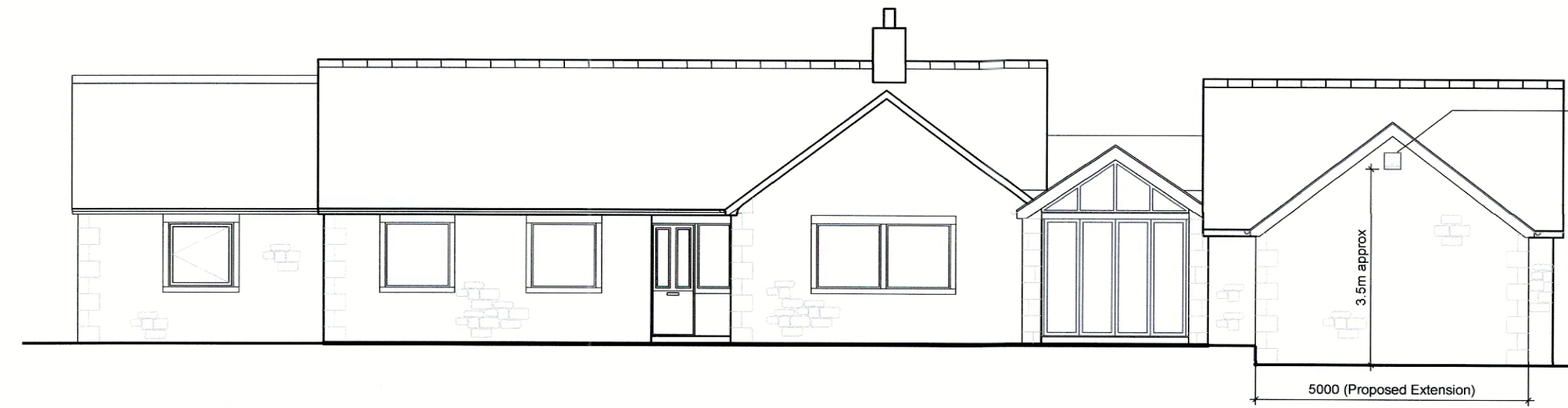
2000

7500 (Proposed Extension)

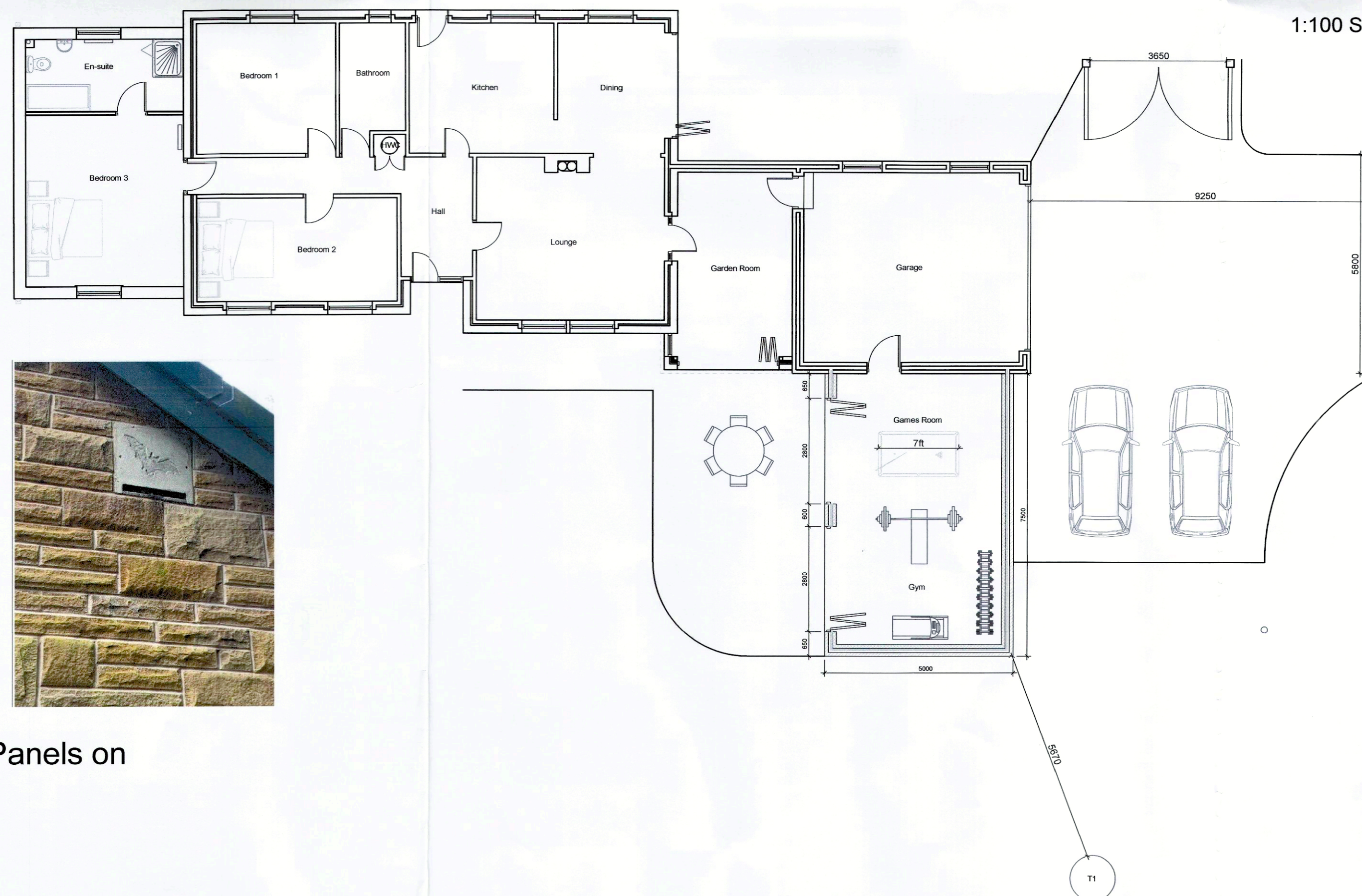
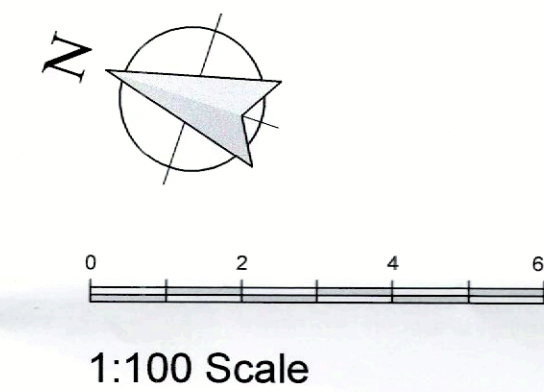
North Elevation

Architectural elevation drawing of a proposed extension to a house. The drawing shows a side profile of a house with a gabled roof and a chimney. A new extension, indicated by a dashed line, is 7500 units long. A tree is shown to the left of the extension.

Elevations
1:100 Scale



This architectural drawing shows the front elevation of a building. The structure is composed of three main sections. On the left is a smaller, single-story section with a flat roof and two square windows. The central section is the largest, featuring a flat roof with a small chimney on the left side. It has a central door flanked by two windows, and two more windows further out. The rightmost section is another single-story part with a flat roof and one square window. The drawing uses simple lines to represent walls, windows, doors, and rooflines, with some decorative elements like a chimney and small square patterns on the walls.



A close-up photograph of a stone wall. The stones are irregular in shape and color, ranging from light tan to yellowish-brown. A small, dark, rectangular plaque is mounted on the wall, featuring the number '18' in a stylized font. Above the plaque, a small, dark, rectangular object, possibly a light fixture or a small window, is visible. The wall is part of a larger structure, with a dark, possibly metal, roofline visible at the top.

A close-up photograph of a wall constructed from irregular, light-colored stones. A small, rectangular, light-colored plaque is mounted on the wall, featuring a detailed illustration of a butterfly. The plaque is positioned near the top of the frame, below a dark, sloping roofline.

Ground Floor / Site Plan
1:100 Scale