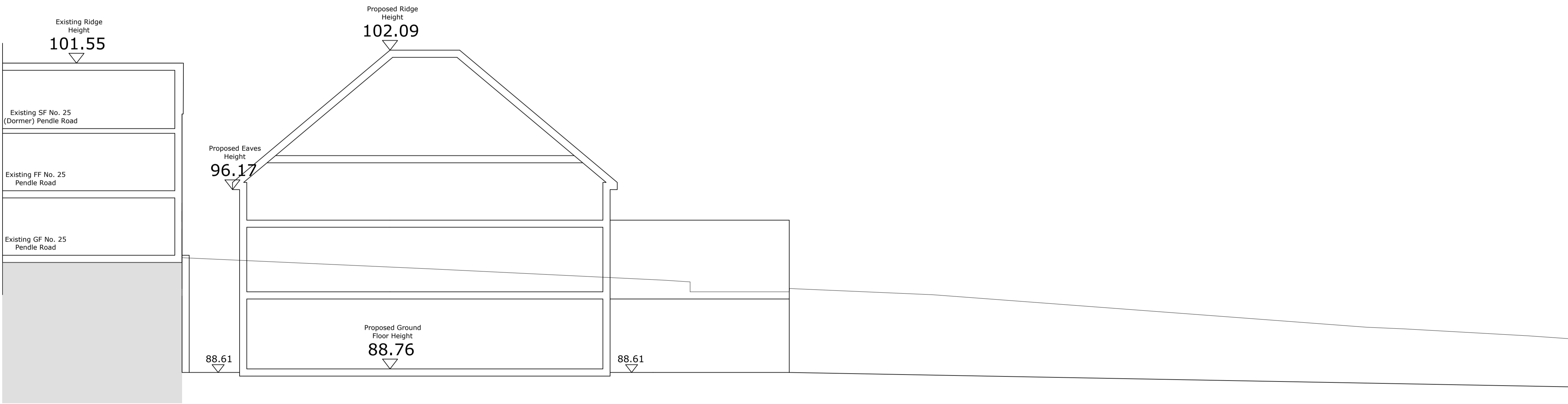


Existing Site Section D-d



Proposed Site Section D-d

FOR ILLUSTRATIVE PURPOSES ONLY



-	23/06/22	Original Drawing	CM	JB
Rev	Date	Revision Description	Drawn By	Approved By
<div><div><div><div><div><div><span></span></div></div></div><div><div><span></span></div></div></div><div><div><span></span></div></div><div><div><span></span></div></div></div><div>ARCHITECTS</div></div> <div>6 Pioneer Court, Darlington, DL1 4WD t: 01325 464 111 e: studio@adgarchitects.co.uk w: www.adgarchitects.co.uk</div>				
Client Muller Property Group				
Project Information Proposed 70 Bed Care Home, Pendle Road, Clitheroe				
Drawing Title Existing and Proposed Site Section D-d				
A1 Scale 1:100		A3 Scale 1:200		
Job Number H.21.78		Drawing Number (9-) 23		Revision -
Drawing Issue PLANNING				

© Copyright 2018 ADG Architects Ltd