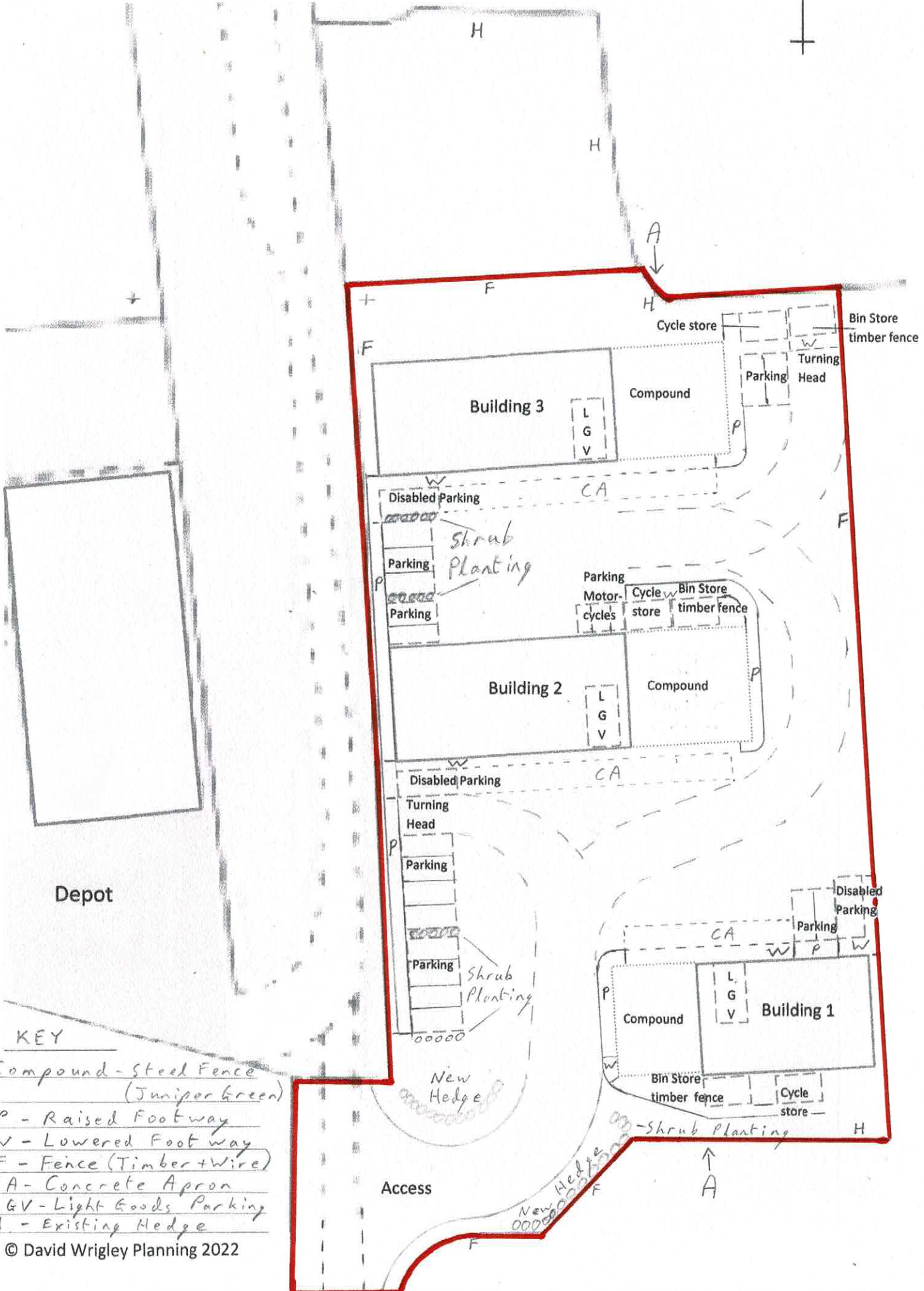


**Land off Blackburn Road, Longridge – Site Layout Plan 2**

Scale 1 : 500



- KEY**
- Compound - Steel Fence (Juniper Green)
  - P - Raised Footway
  - W - Lowered Footway
  - F - Fence (Timber + Wire)
  - CA - Concrete Apron
  - LGV - Light Goods Parking
  - H - Existing Hedge

## **Land off Blackburn Road Longridge – Site Layout Plan 2 detail notes**

To be read in conjunction with Site Layout Plan 2 and other plans/reports where referred to below :

Compound – Steel fence with galvanised steel uprights and juniper green wire mesh 3m high with steel gates finished in Juniper Green harris style.

P – Raised footway - 2m wide for detail see Plan 11

W – Lowered footway - 2m wide for detail see Plan 12

F – Fence (Timber + Wire) – Timber posts 1.8m high with green rylock netting 1.2m high and 3 strands galvanised plain hi-tensile wire above.

CA – Concrete Apron - 2.5m wide extending in front buildings and compounds excluding parking spaces.

LGV – Light Goods Parking – overnight parking of LGVs within buildings 1,2 and 3 three spaces with an electric vehicle charging point adjacent.

H – Existing Hedge – retained and enhanced see Landscaping report including Plan 6

New Hedge – see Landscaping report including Plan 6 for details

Shrub Planting – to divide up car parking areas see Landscaping report for details

Parking – 17 car parking spaces of standard dimensions (5x2.5m)

Disabled Parking – 3 car parking spaces to standard enhanced dimensions (6x3.6m)

Parking Motor Cycles – 3 spaces to standard dimensions (3x1.6m) secure locking hoops provided

Turning Head – Tarmacadam surfaced minimum 4m wide with 10m radius turning approach

Access – Tarmacadam surfaced minimum 8m wide with 16m external radius into yard area and bell mouth with 8m radius

Cycle Store – each to cover 7 standard bicycles (total 21) see plans 8 and 8a

Bin Store – each to enclose three covered commercial bins see plans 8 and 8a

A-A Existing and proposed levels are shown on Site Section A-A

(Note parking has been provided to Lancashire Parking Standards based on the size and use class of the proposed buildings together with additional cycle storage beyond standard requirements to encourage sustainable journeys to and from work for all employees).