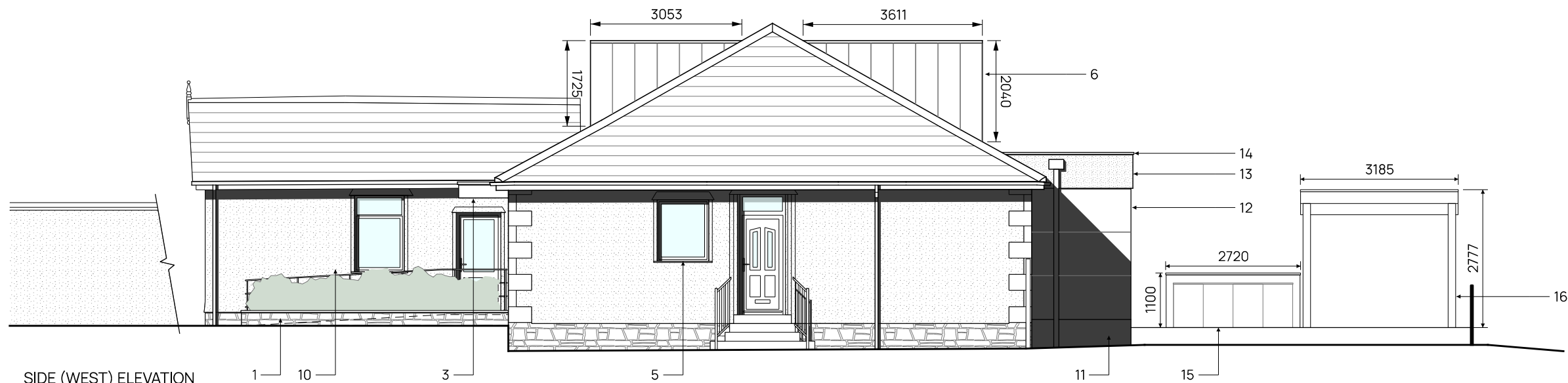


FRONT (NORTH) ELEVATION



SIDE (WEST) ELEVATION

- | | | | |
|---|--|----|-----------------------------|
| 1 | Ramp (1:15) providing level access | 10 | Baulstrade to ramp |
| 2 | Obscure double glazed window, colour tbc | 11 | Sandstone to match existing |
| 3 | Zinc clad canopy over entrance | 12 | Smooth sandstone |
| 4 | New level access entrance | 13 | Mid grey render |
| 5 | Double glazed window, colour tbc | 14 | Zinc coping |
| 6 | Zinc clad dormer | 15 | Outdoor kitchen |
| 7 | Black/grey double glazed obscure window | 16 | Covered timber pergola |
| 9 | Roof window | | |