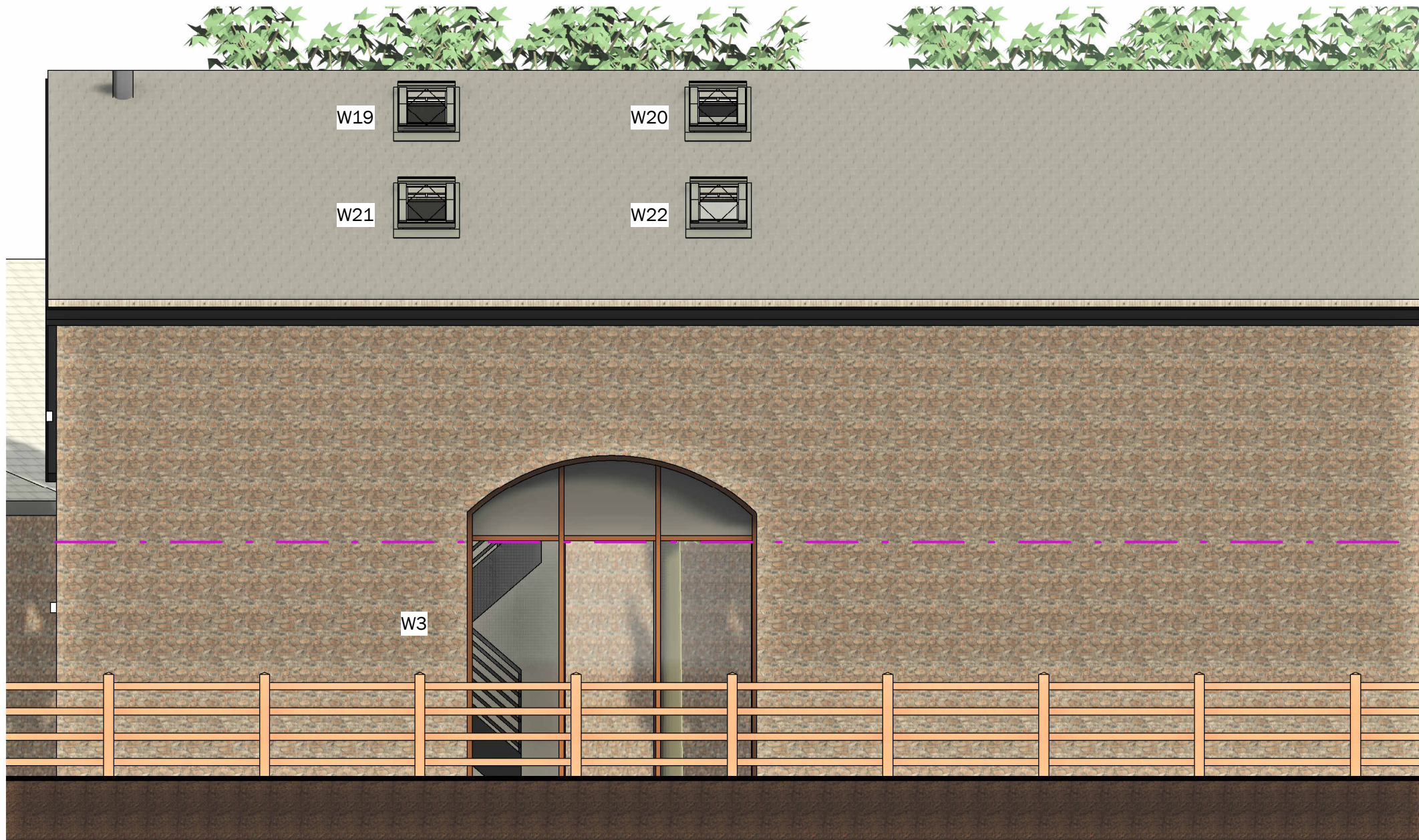


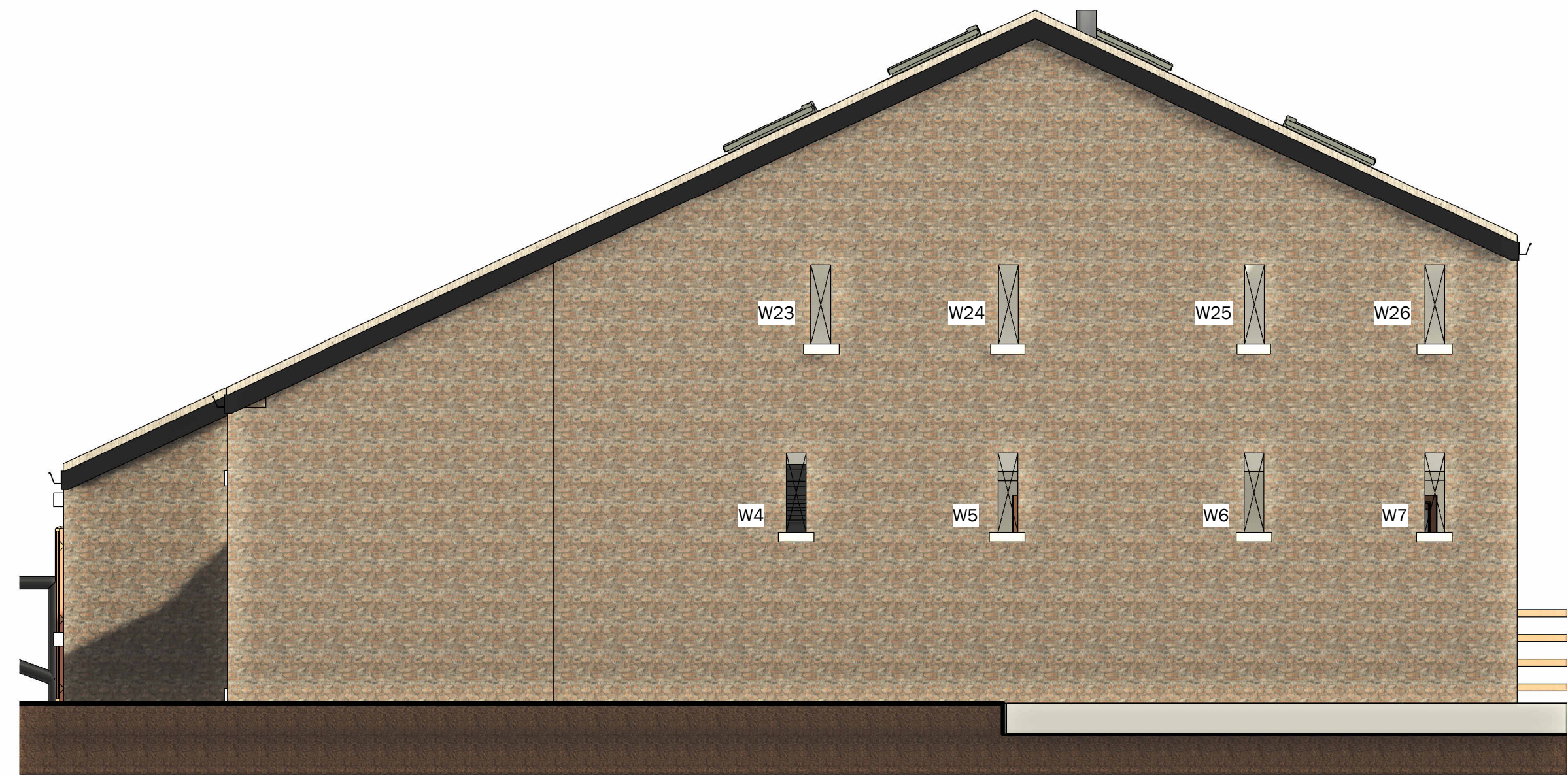
PROPOSED SOUTH WEST ELEVATION

1 : 50



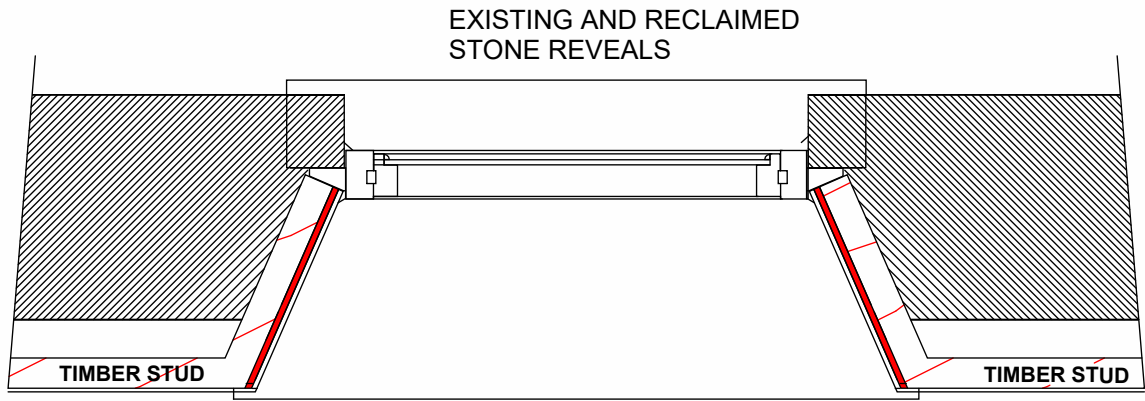
PROPOSED NORTH EAST ELEVATION

1 : 50



PROPOSED SOUTH EAST ELEVATION

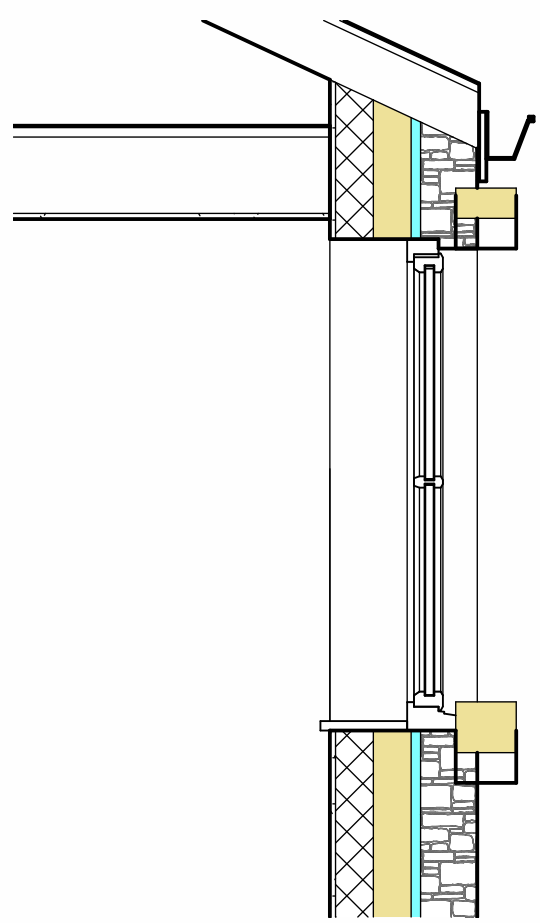
1 : 50



REFURBISHED OPENING DETAIL

FIG . 1 WINDOW OPENING DETAIL

1 : 25



FLUSH REVEAL SECTION

1 : 20

WINDOW SCHEDULE	LOFT SHAY FARM			
REFERENCE	LOCATION	WIDTH X HEIGHT	WINDOW DESCRIPTION	WINDOW TYPE
GROUND FLOOR WINDOWS			ALL WINDOW REVEALS TO BE CHAMFERED IN ACCORDANCE WITH THE DETAIL SHOWN.	
W1	SOUTH WEST ELEVATION	1100 x 1300	NEW TIMBER FLUSH FINISH CASEMENT WINDOW TO RE-BUILT WALL	NEW TIMBER CASEMENT WINDOW
W2	SOUTH WEST ELEVATION	2811 X 2350	CUSTOM ARCHWAY WINDOW (PATTERN TO BE AGREED)	CUSTOM ARCHWAY FRAME
W3	NORTH EAST ELEVATION	2865 X 2350	CUSTOM ARCHWAY WINDOW (PATTERN TO BE AGREED)	CUSTOM ARCHWAY FRAME
W4	SOUTH EAST ELEVATION	200 X 800	NEW SLOT WINDOW WITH CHAMFERED REVEALS (FIG . 1)	SLOT WINDOW
W5	SOUTH EAST ELEVATION	200 X 800	N/A (NOT BEING USED)	SLOT WINDOW
W6	SOUTH EAST ELEVATION	200 X 800	N/A (NOT BEING USED)	SLOT WINDOW
W7	SOUTH EAST ELEVATION	200 X 800	NEW SLOT WINDOW WITH CHAMFERED REVEALS (FIG . 1)	SLOT WINDOW
W8	NORTH WEST ELEVATION	900 x 1150	NEW TIMBER FLUSH FINISH CASEMENT WINDOW TO REPLACE DOOR	NEW TIMBER CASEMENT WINDOW
W9	NORTH WEST ELEVATION	900 x 1700	NEW TIMBER FLUSH FINISH FIXED GLAZING WINDOW	NEW TIMBER FIXED GLAZING
W10	NORTH WEST ELEVATION	600 x 400	NEW TIMBER FLUSH FINISH SLOT WINDOW TO REPLACE VENT	NEW TIMBER CASEMENT WINDOW
W11	NORTH WEST ELEVATION	200 X 800	N/A (NOT BEING USED)	SLOT WINDOW
W12	NORTH WEST ELEVATION	200 X 800	N/A (NOT BEING USED)	SLOT WINDOW
W13	NORTH WEST ELEVATION	200 X 800	N/A (NOT BEING USED)	SLOT WINDOW
W14	NORTH WEST ELEVATION	200 X 800	N/A (NOT BEING USED)	SLOT WINDOW
FIRST FLOOR WINDOWS				
W15	SOUTH WEST ELEVATION	550 X 978	VELUX GGL CKO4 287021AU CONSERVATION ROOFLIGHTS	VELUX ROOFLIGHT
W16	SOUTH WEST ELEVATION	550 X 978	VELUX GGL CKO4 287021AU CONSERVATION ROOFLIGHTS	VELUX ROOFLIGHT
W17	SOUTH WEST ELEVATION	550 X 978	VELUX GGL CKO4 287021AU CONSERVATION ROOFLIGHTS	VELUX ROOFLIGHT
W18	SOUTH WEST ELEVATION	550 X 978	VELUX GGL CKO4 287021AU CONSERVATION ROOFLIGHTS	VELUX ROOFLIGHT
W19	NORTH EAST ELEVATION	550 X 978	VELUX GGL CKO4 287021AU CONSERVATION ROOFLIGHTS	VELUX ROOFLIGHT
W20	NORTH EAST ELEVATION	550 X 978	VELUX GGL CKO4 287021AU CONSERVATION ROOFLIGHTS	VELUX ROOFLIGHT
W21	NORTH EAST ELEVATION	550 X 978	VELUX GGL CKO4 287021AU CONSERVATION ROOFLIGHTS	VELUX ROOFLIGHT
W22	NORTH EAST ELEVATION	550 X 978	VELUX GGL CKO4 287021AU CONSERVATION ROOFLIGHTS	VELUX ROOFLIGHT
W23	SOUTH EAST ELEVATION	200 X 800	NEW SLOT WINDOW WITH CHAMFERED REVEALS (FIG . 1)	SLOT WINDOW
W24	SOUTH EAST ELEVATION	200 X 800	NEW SLOT WINDOW WITH CHAMFERED REVEALS (FIG . 1)	SLOT WINDOW
W25	SOUTH EAST ELEVATION	200 X 800	NEW SLOT WINDOW WITH CHAMFERED REVEALS (FIG . 1)	SLOT WINDOW
W26	SOUTH EAST ELEVATION	200 X 800	NEW SLOT WINDOW WITH CHAMFERED REVEALS (FIG . 1)	SLOT WINDOW
W27	NORTH WEST ELEVATION	200 X 800	NEW SLOT WINDOW WITH CHAMFERED REVEALS (FIG . 1)	SLOT WINDOW
W28	NORTH WEST ELEVATION	200 X 800	NEW SLOT WINDOW WITH CHAMFERED REVEALS (FIG . 1)	SLOT WINDOW
W29	NORTH WEST ELEVATION	200 X 800	NEW SLOT WINDOW WITH CHAMFERED REVEALS (FIG . 1)	SLOT WINDOW



PROPOSED NORTH WEST ELEVATION

1 : 50

Peter Hitchen
Architects

Marathon House
The Sidings Business Park
Whalley, BB7 9SE

01254 823 885

www.peterhitchenarchitects.co.uk

NOTES:

General Window Specification:
Frame: Traditional flush casement (sashes)/Paint tbc/ Accoya
Glass: 4MM Softcoat -16mm Black warm edge (Argon)- 4mm Low Iron (24.0mm)

- Standard and made to measure sizes.
- Double Glazing.
- Engineered accepted using laminate timbers.(Sustainably Sourced)
- Finished products colour to be agreed.
- Traditional Ironmongery Features
- Twin Gasket Systems for weatherproofing.
- Increased ventilation with lockable mechanisms on open windows.
- Fully tested and approved gaskets and sealed.
- Glass is toughened for the Barn door windows.
- Good Thermal Performance (Minimal Heat Loss)
- Good Security Performance
- Good Weather Performance (Durability against weathering , Heat loss and Uv Damage.)
- Good Acoustic Performance.

No.	Description	Date

CLIENT: Mr & Mrs Towler
Loft Shay Farm
Clitheroe Road
Knowle Green
PR3 2YQ

PROJECT:

BARN CONVERSION

SHEET:

WINDOW SCHEDULE

Project number PHA/617

Date 16/01/2023

Drawn by LW

Checked by PH

A5.3

Scale As indicated

Sheet size A1