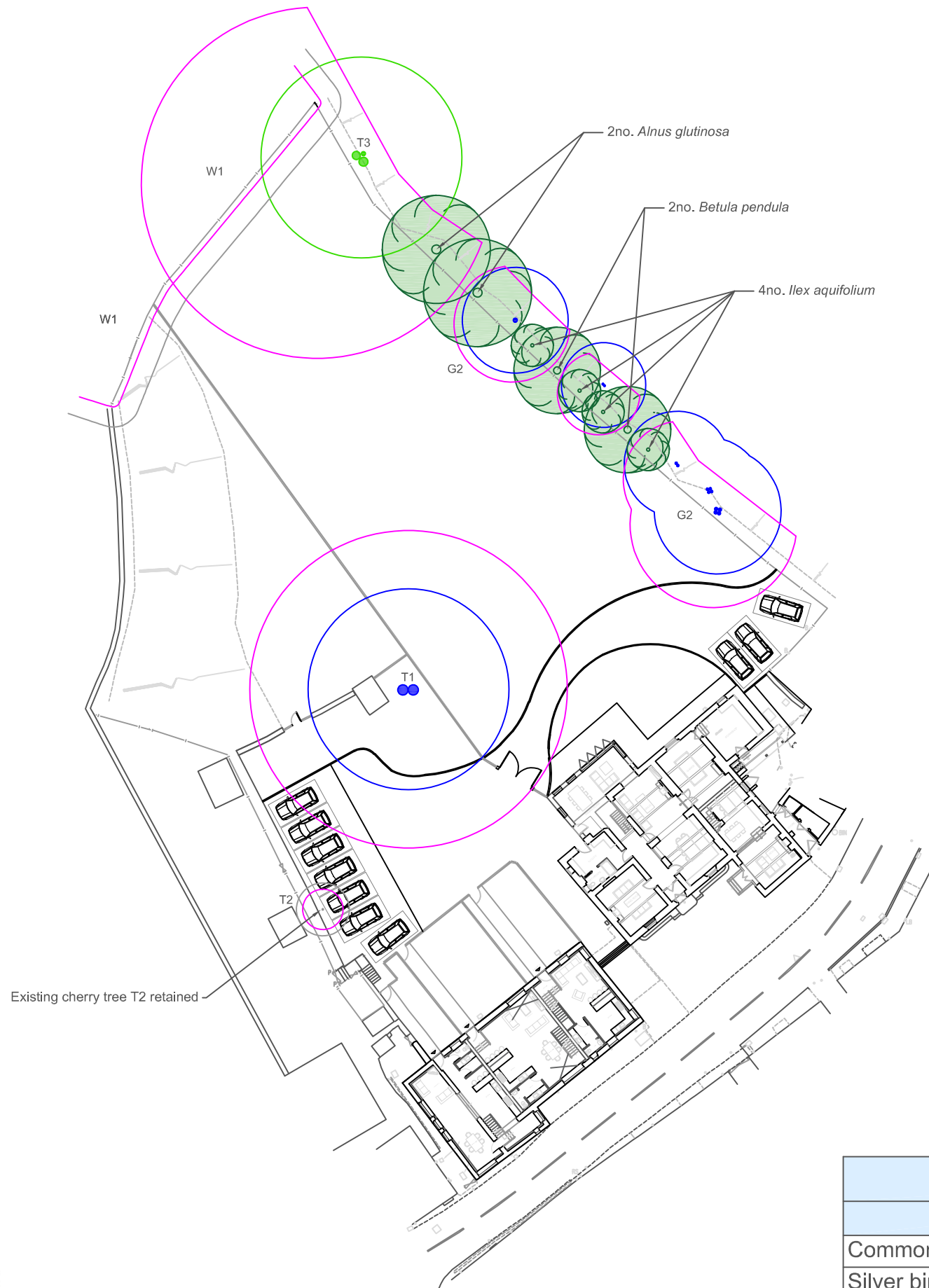


# Tree Planting Plan



## Tree Planting Notes

- The proposed new trees shall be planted in the first planting season following completion of the development
- Soft landscaping materials and operations shall conform to all current and relevant British Standards, including BS8545 (2014), BS4428 (1989) and BS3882 (2015)
- Subsoil in the planting areas is to be well-broken to aid free draining. Topsoil in planting areas is to be cultivated to a depth of 200mm and ameliorated with compost as required
- Planting areas shall be maintained weed-free and watered prior to planting, immediately post-planting and then at appropriate periods during establishment of the trees
- Trees shall be fitted with appropriate shelters, cages or exclusion fencing to protect them from grazing/browsing animals during establishment and shall be secured using a single stake method
- Tree protection and staking systems shall be checked on a six-monthly basis and be adjusted or removed when required
- Formative pruning and future tree works should be carried out in accordance with BS3998 (2010)
- If, within a period of five years from the date of planting, a tree or any replacement dies or becomes seriously damaged or diseased, it shall be replaced by a tree of the same species and similar size to that originally planted within the next planting season

## Existing trees

- Category 'A' High quality
- Category 'B' Moderate quality
- Category 'C' Low quality
- Category 'U' Unsuitable for retention
- Root protection areas (RPAs)

## Proposed trees

- Proposed planting locations of 8no. replacement trees

## Identification numbers:

- T = individual tree
- G = group of trees
- H = hedge
- W = woodland

## Site:

Talbot Hotel  
Talbot Street  
Chipping  
PR3 2QE

## Client:

Sunderland Peacock & Associates

**Date:** September 2022

**Scale:** 1:500 at A3

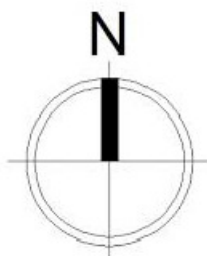
**Drawing:** LTC115-TPLP

**Drawn by:** JK

## Tree Planting Schedule

Species	Quantity	Type	Specification
Common alder ( <i>Alnus glutinosa</i> )	2	RB	Standard 8-10cm
Silver birch ( <i>Betula pendula</i> )	2	RB	Standard 8-10cm
Holly ( <i>Ilex aquifolium</i> )	4	CG	120-150cm
<b>Total new trees:</b>	<b>8</b>		

CG = container grown; RB = root ball; BR = bare root



**LAKELAND**  
**TREE CONSULTANCY**  
ARBORICULTURAL PLANNING SPECIALIST

Halton Mill, Mill Lane, Halton, LA2 6ND

[info@lakelandtreeconsultancy.co.uk](mailto:info@lakelandtreeconsultancy.co.uk)

01524 874124

[lakelandtreeconsultancy.co.uk](http://lakelandtreeconsultancy.co.uk)