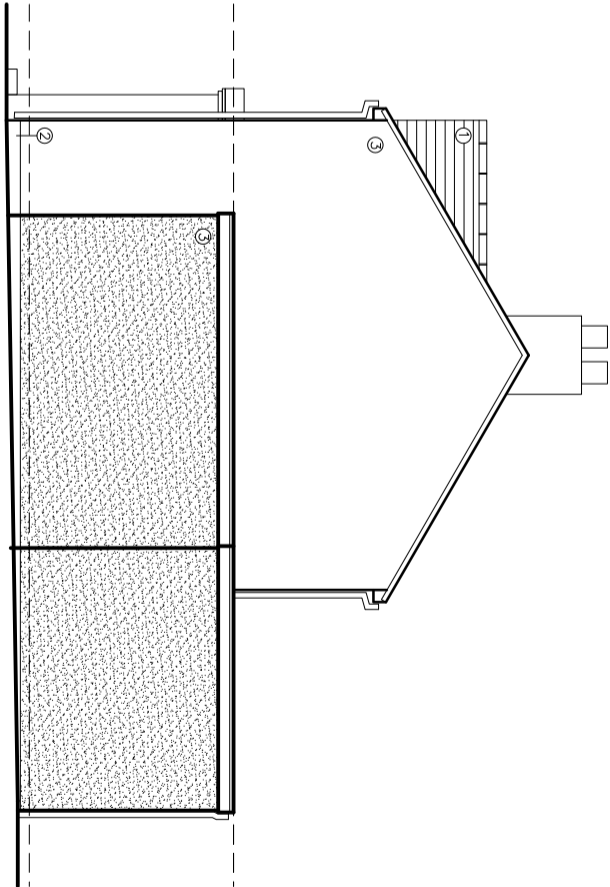
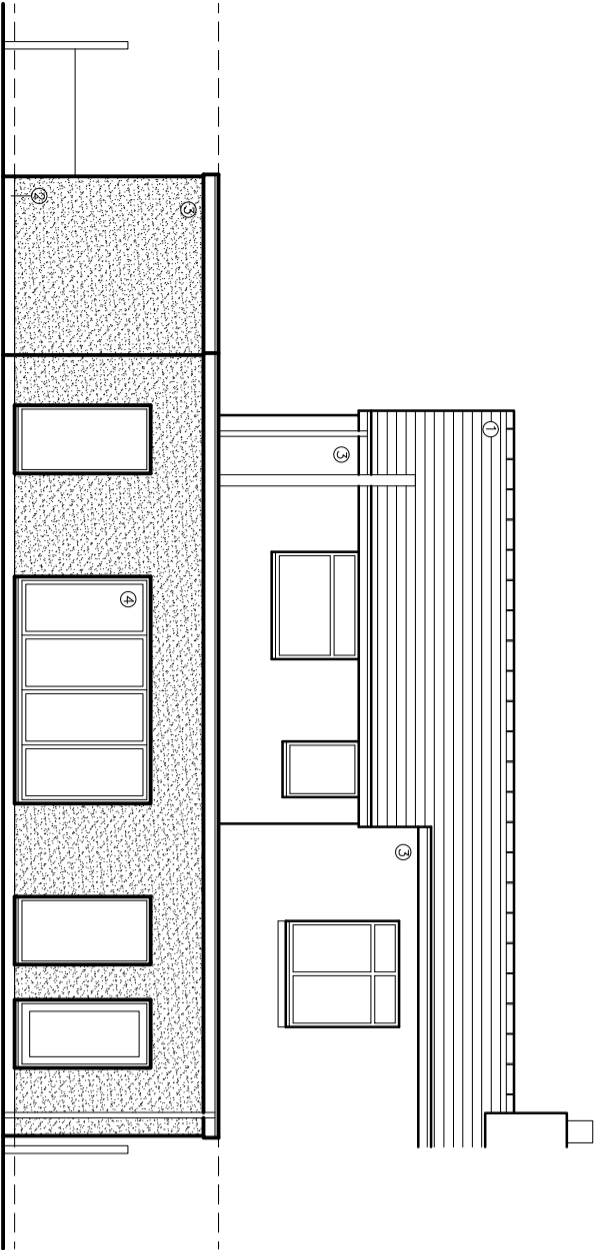


- MATERIALS**
1. NATURAL BLUE/GREY SLATE
  2. BRICKWORK
  3. SAND/CEMENT RENDER OR K. REND
  4. UPVC OR ALUMINIUM WINDOWS/DOORS

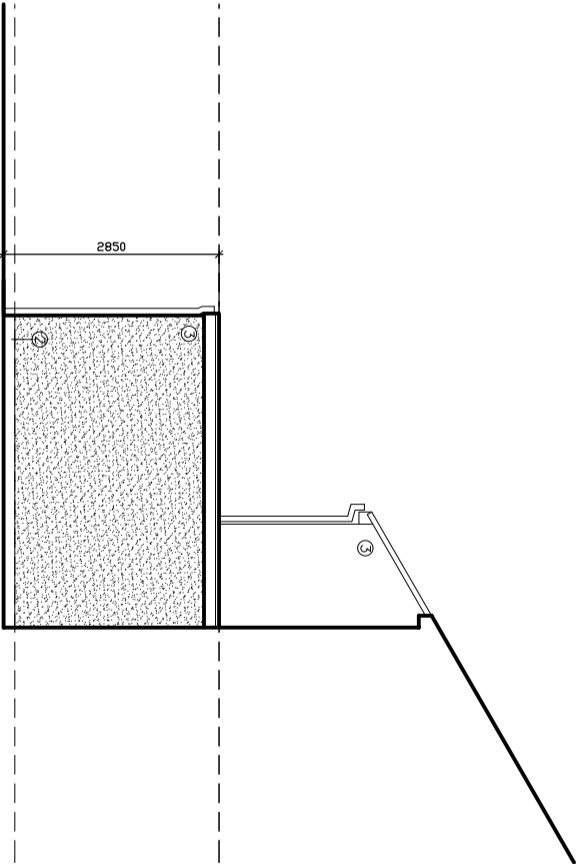
PROPOSED NORTH WEST ELEVATION (1)



PROPOSED SOUTH WEST ELEVATION (2)



PROPOSED SOUTH EAST ELEVATION (3)



PROPOSED NORTH EAST ELEVATION (4)

©2022 QW+Q architects Ltd 2022 | This Drawing is to be used in conjunction with all other project associated drawings and information. Do not scale from this drawing. All dimensions and specifications are given in millimetres unless otherwise stated. No drawing is copyright in the property of QW+Q architects Ltd.

<div><div><div>QW+Q</div><div>architects</div></div><div><div>The Annex Lowerfold Farm Oswoldtwistle B354DA</div><div><div>Architects Registration Board</div></div></div><div><div>Tel: 01254 483448</div><div>Private Residential   Housing   Commercial   Conservation   Domestic</div><div>Email: info@qw-architects.com   Web: www.qw-architects.com</div></div></div>	Client	MR_M_LAMBE	Scale	1:100	Sheet Size	A3	Job Number	22-050	Drawn By	AW	Checked	AW
	Project	22_CALDER_AVENUE LANGHO	Drawing Title	PROPOSED_ELEVATIONS	Drawing Status	PLANNING	Drawing Number	PL/07	Revision	B	First Issue	SEPT_2022