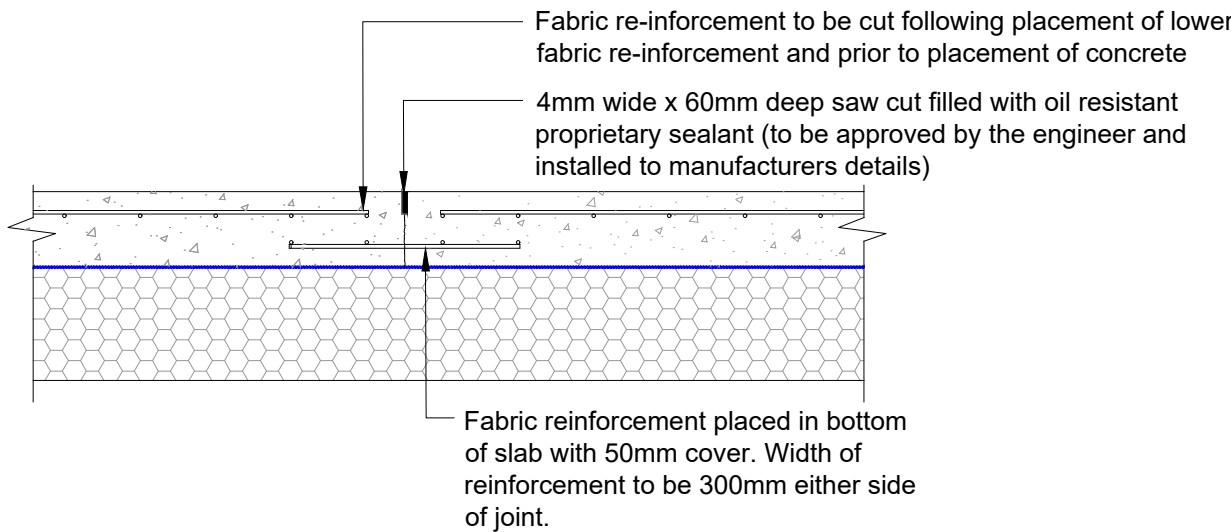


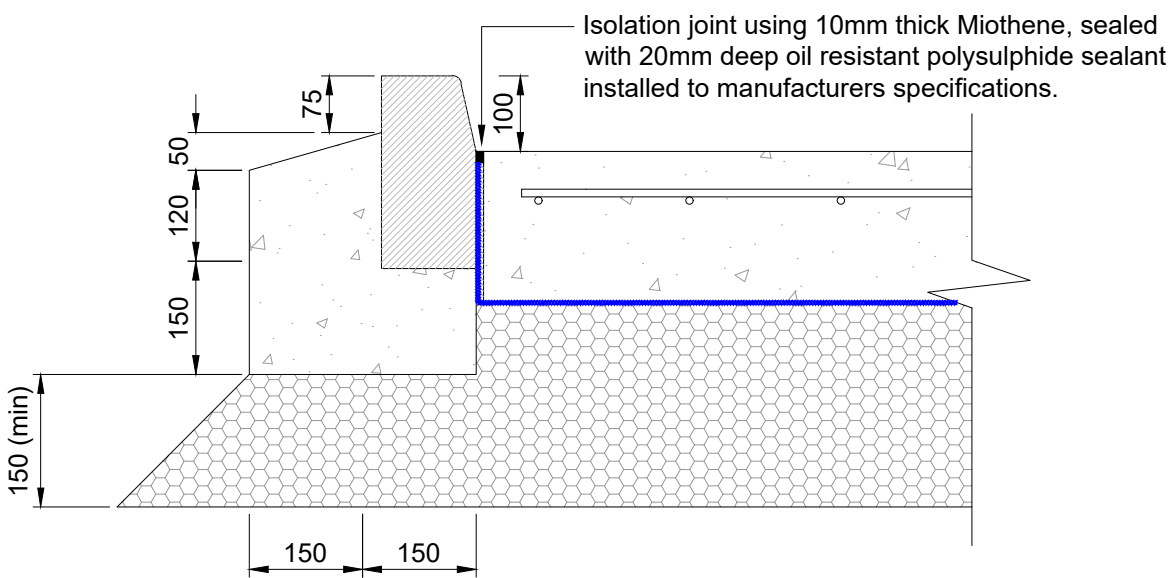
Site Access Slab Construction

Scale 1:20



Sawn Restrained-Movement Joint (SRMJ)

Scale 1:20



1-Stage Kerb Construction
125 x 255 HB2 Half Batter
(1:10)

| | |
|--|---|
| Sub-Base | |
| Sub-base thickness established in accordance with CD225 - Design for New Pavement Foundations (Rev 1); Foundations Class 2: Restricted design approach, with granular sub-base material in accordance with SHW clause 803. | |
| CBR<5% | - Sub-grade improvement works required - refer to design engineer. |
| 5%≤CBR≤8% | - 270mm thickness of Type 1 granular sub-base material to SHW clause 803. |
| 8%≤CBR≤10% | - 240mm thickness of Type 1 granular sub-base material to SHW clause 803. |
| 10%≤CBR≤12% | - 230mm thickness of Type 1 granular sub-base material to SHW clause 803. |
| 12%≤CBR≤15% | - 220mm thickness of Type 1 granular sub-base material to SHW clause 803. |
| CBR ≥12% | - 200mm thickness of Type 1 granular sub-base material to SHW clause 803. |

KEY

KERBS & MATERIAL CONSTRUCTION

All kerb construction shall have a minimum 150mm depth/thickness of grade ST1 concrete bed and backing, and shall comply with Lancashire County Council kerb details.

- HALF BATTERED KERBS**
125x255mm PCC Half battered kerbs (HB2) to BS EN 1339, set with 100mm upstand.
- CONCRETE SLAB**
200MM Reinforced concrete slab as per details.
- CBR TEST**
Locations for CBR tests to be undertaken.
- ISOLATION JOINT**
Isolation joint between kerb and concrete slab.
- SAWN RESTRAINED MOVEMENT JOINT**
Sawn restrained movement joint in concrete slab.

| | | | | |
|----------|------|-----------|----|-------|
| Revision | Date | Amendment | By | Check |
| | | | | |

| | | | |
|----------------|-----------------------|-------------|------------|
| Development | Dale View | | |
| Location | Billington | | |
| Marketing Name | Calder Grange | | |
| Drawing Title | A59 Access and Egress | | |
| Drawing Number | 4441 / Eng / A59-2 | Revision | - |
| Drawn By | JGM | Scale @ A2 | As Stated |
| Checked by | CL | First Issue | 03.02.2023 |



Redrow Homes Lancashire
Redrow House, 14 Eaton Avenue, Buckshaw Village, Chorley, PR7 7NA
Tel: 01772 643700 Fax: 01772 643701 Web: www.redrow.co.uk

Legal Disclaimer TBC
This layout has been designed after due consideration of our Context & Constraints Plan