

Stanton Andrews do not accept liability for any loss or degradation of information held in the drawing resulting from the translation from the original file format to any other file format or from the recipient's reading of it in any other programme or on earlier version of the programme. Stanton Andrews accepts no liability for use of this drawing by parties other than the party for whom it was prepared or for purposes other than those for which it was prepared.

This drawing must be printed in colour, if this text is not RED the drawing must be reprinted.

Do not scale, use figured dimensions only. All dimensions to be checked on site. This drawing should be printed and read at the original size, as stated in title block. Stanton Andrews accept no responsibility for errors that occur as a result of reviewing this drawing at any other size. Stanton Andrews to be notified of any discrepancies before proceeding.

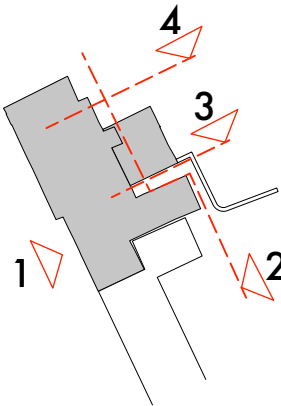
DWG issues - when this drawing is issued in DWG format it is an uncontrolled version and is provided to enable the recipient to prepare its own documents/drawings for which it is solely responsible. It is based on background information current at the time of issue. Stanton Andrews accepts no liability for any alterations, additions to or discrepancies arising out of changes to such background information which occur after it has been issued by Stanton Andrews.

Drawing is to be read in conjunction with all relevant consultants and specialist drawings. 'As existing' drawings based on information provided by others - no measured survey of the property has been undertaken by the architect. This drawing is subject to copyright.

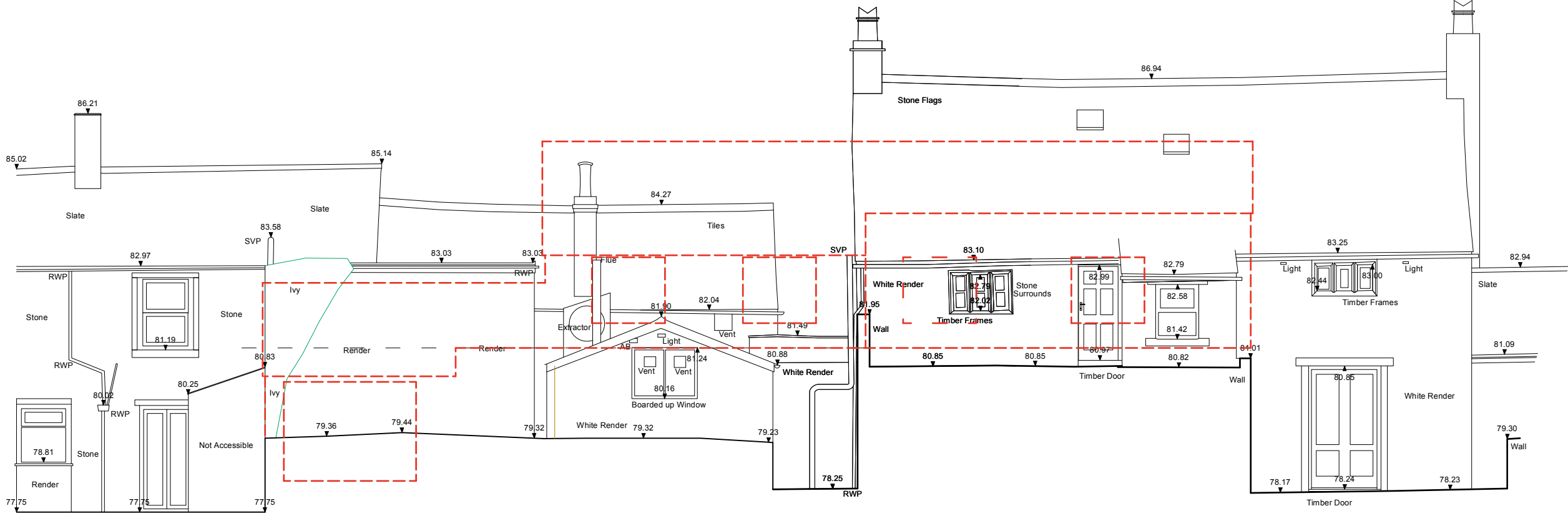
revision	date	note
A	august 2022	issued for pre-app.
B	march 2023	issued for planning application.

LEGEND

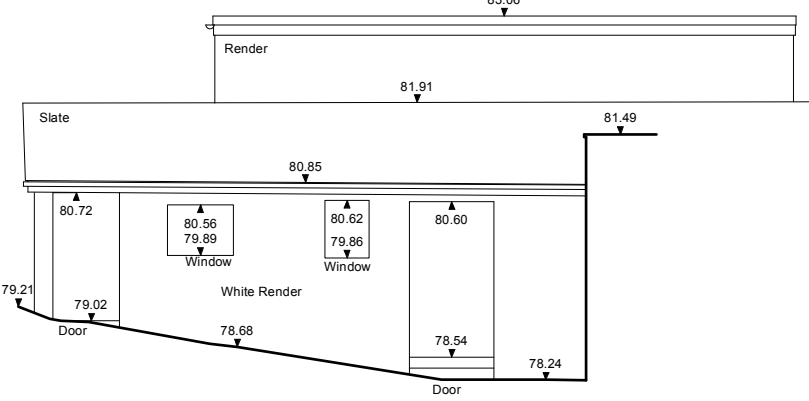
red broken line indicates profile of consented scheme application ref. 3/2020/0697



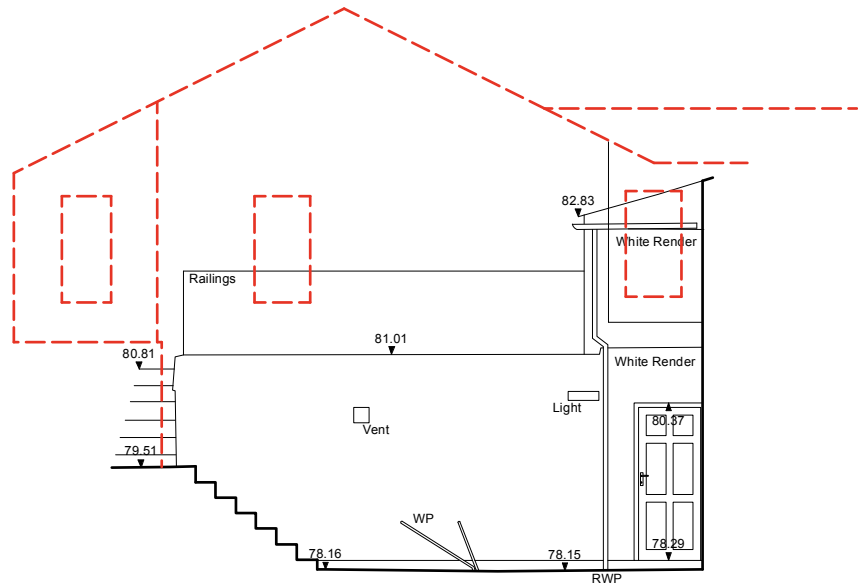
1 West Elevation
1:100



2 East Elevation
1:100



3 North Elevation
1:100



4 North Elevation
1:100