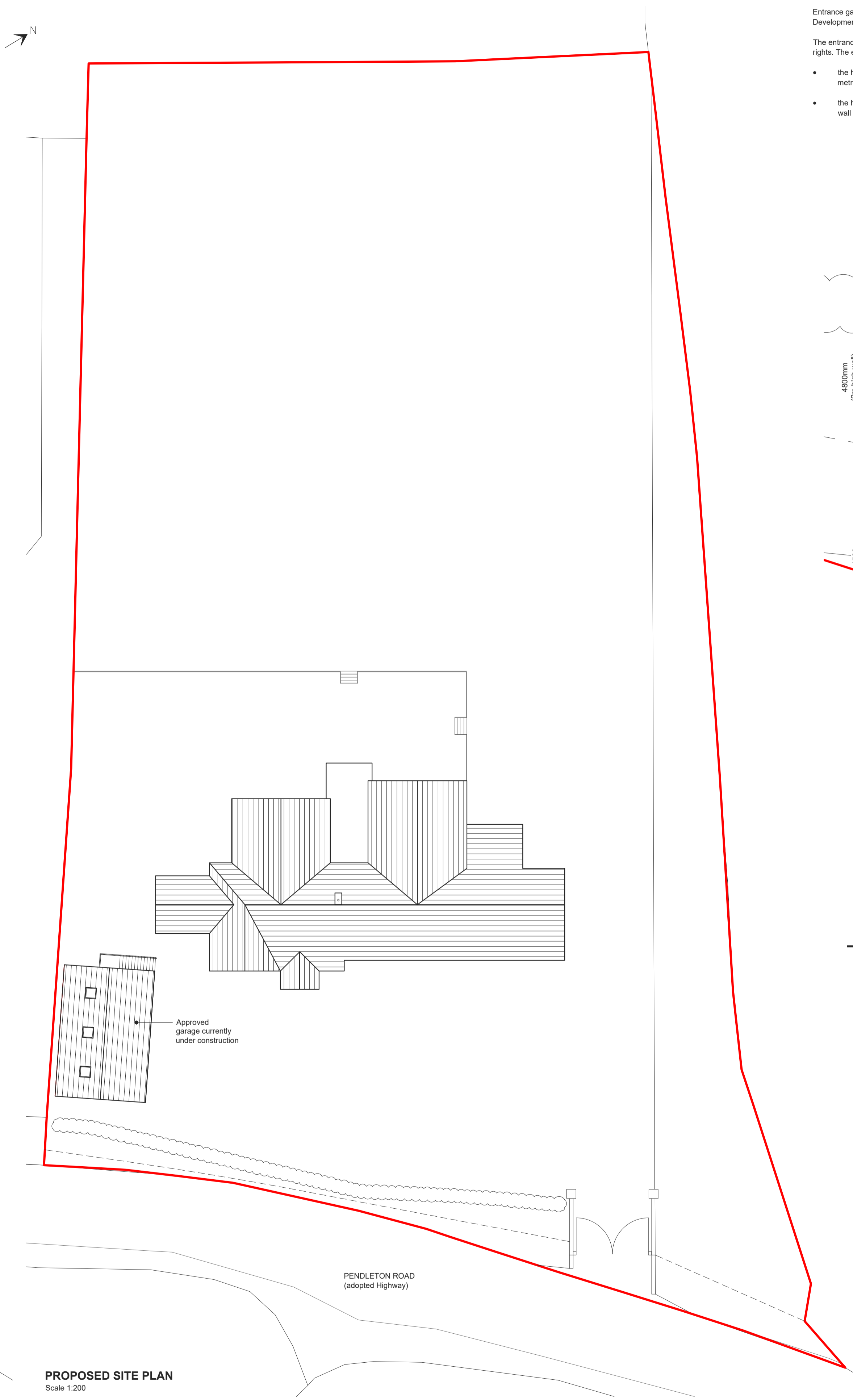


**EXISTING SITE PLAN**  
Scale 1:200



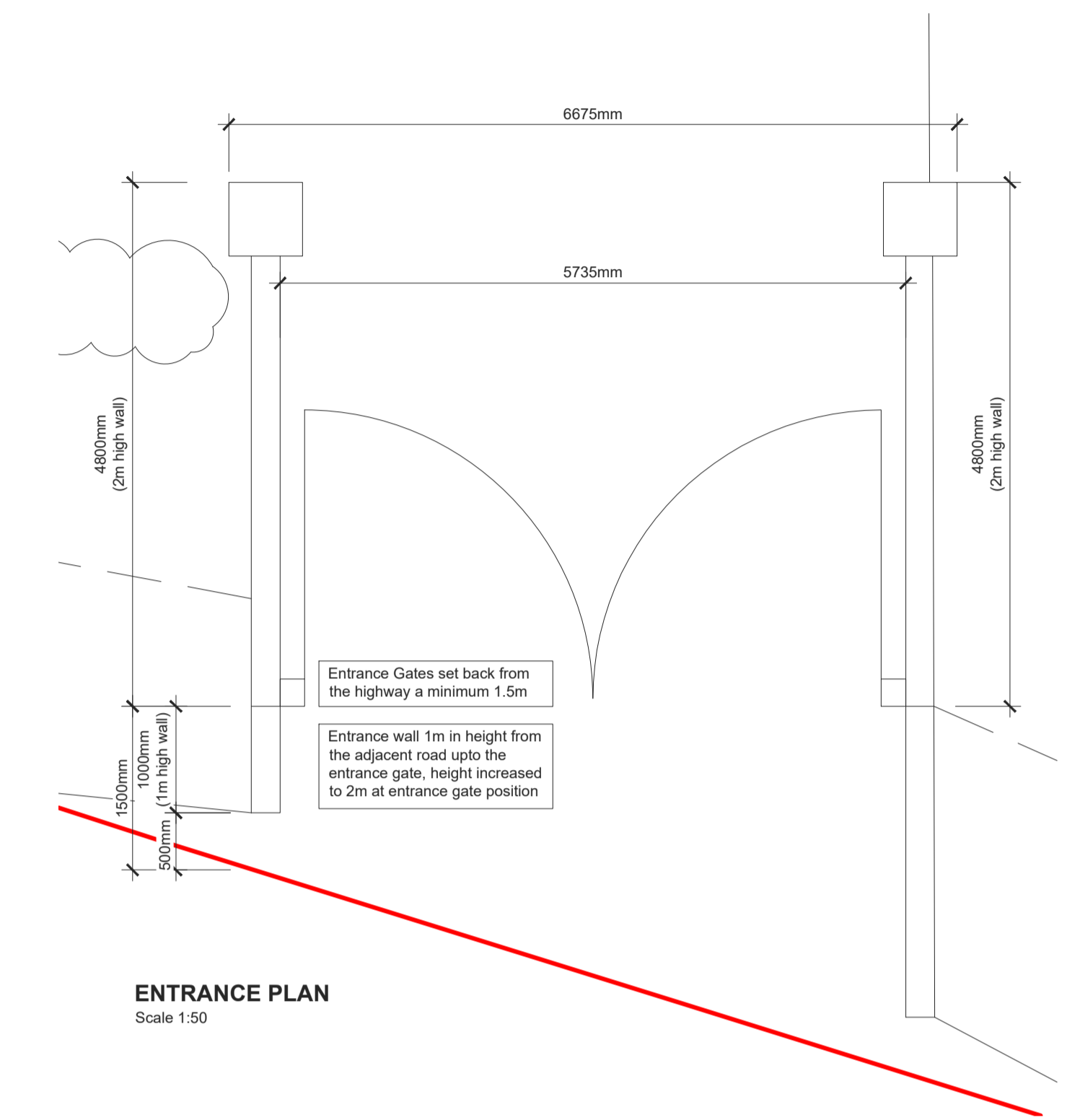
**PROPOSED SITE PLAN**  
Scale 1:200

**PERMITTED DEVELOPMENT RIGHTS:**

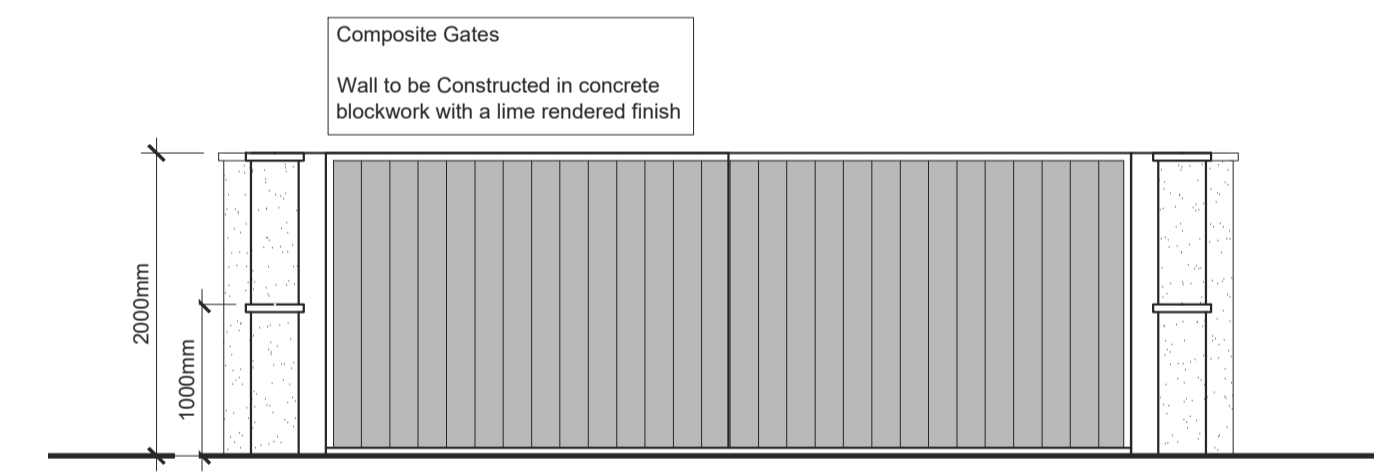
Entrance gate / walls to be constructed in accordance with permitted development rights as set out in the Town and Country Planning (General Permitted Development) (England) Order 2015.

The entrance gate / walls have been designed in line with the points below in accordance with Part 2 Minor Operations Class A permitted development rights. The erection, construction, maintenance, improvement or alteration of a gate, fence, wall or other means of enclosure.

- the height of any gate, fence, wall or means of enclosure erected or constructed adjacent to a highway used by vehicular traffic cannot exceed one metre above ground level (Entrance wall within 1.5m from the highway constructed to a maximum height of 1m).
- the height of any other gate, fence, wall or means of enclosure erected or constructed cannot exceed two metres above ground level (Entrance gate / wall positioned away from the highway, minimum 1.5m from highway, constructed to a maximum height of 2m).



**ENTRANCE PLAN**  
Scale 1:50



**ENTRANCE ELEVATION**  
Scale 1:50