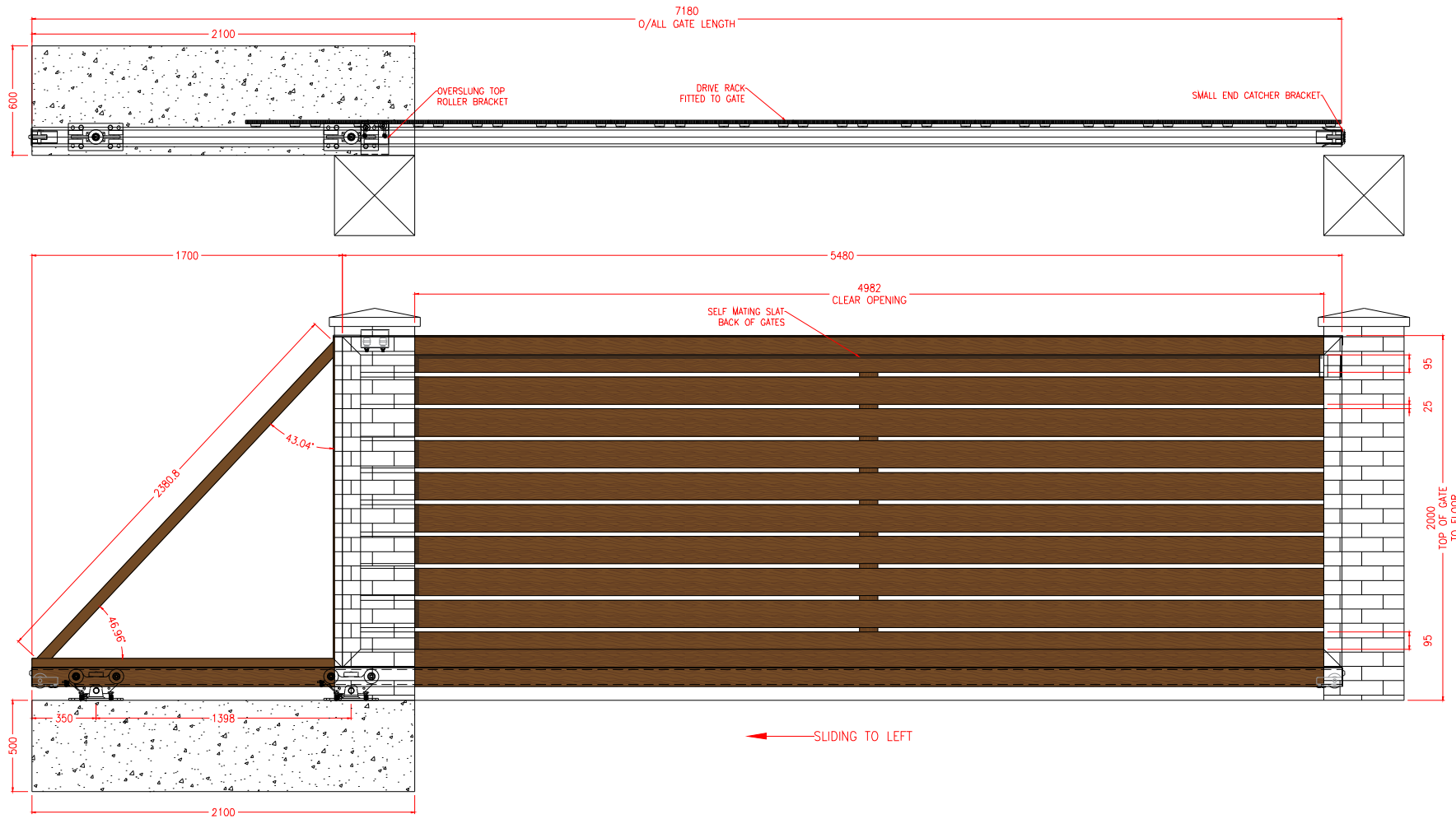


VIEWED FROM OUTSIDE OF PROPERTY LOOKING IN



**Cantilever Gate Materials**

- Gate Slides Left To Open
- 100 x 50mm Gate Frame Kwilla
- 150 x 16mm Planks Kwilla
- 100 x 16mm Self Mating Slat Kwilla
- Top Roller Guide Channel Kwilla
- Medium Cantilever Kit Kwilla
- Small End Catcher Bracket Kwilla
- Overslung Top Roller Bracket Kwilla
- Drive Rack Fitted To Gate
- Cantilever Gate 5 Wheel Carriages
- Cantilever End Saddles

CNC by	
Cut by	
Fabricated by	
Checked & Packaged by	

Delivery / Collected



Valley Forge Business Park,  
Reedyford Road, Nelson,  
Lancashire BB9 8TU

CAD Reference:  
AG1828

Rev  
A

Drawn By : W Litherland

GATE COLOUR / FINISH: Kwilla Woodgrain

PLEASE CHECK THE COLOUR AND FINISH ARE CORRECT

Rev	Date	Drawn	Approved	Description	Client:	Scale : NTS
A	11/07/23	WL	WL	For Approval	Chippendale	
B	11/10/23	WL	WL	Sizes Amended to Site Survey	Job Reference:	
B	13/10/23	WL	WL	Approved	Cantilever Gate	
C	14/11/23	WL	WL	Finish Changed to Kwilla	<b>Disclaimer:</b> Once approved any alterations requested will incur extra charges which the client is liable for. Its the installers responsibility to ensure all current safety legislation are met.	