

DRAWING NOTES:

See DWA Architects drawings for further details.

All construction work adjacent to trees to be in accordance with BS 5837:2012 Trees in relation to design, demolition and construction recommendations.

Tree protection fencing should be erected prior to the commencement of works on site.

KEY:

HARD LANDSCAPE SCHEDULE

- PROPOSED BUILDINGS:**  
Proposed buildings. See DWA Architects drawings for details.
- PROPOSED PUBLIC PATHWAYS:**  
Proposed public pathways to be textured concrete flags. Use 600 x 600 x 35mm thick (and 70mm thick in car park area for vehicle traffic) paving in 'Natural colour' or similar to be approved. All material build ups and laying specifications to engineer's and manufactures details, to include joints between flags. All levels and falls to be laid appropriately to avoid puddling.
- PROPOSED PUBLIC PATIOS:**  
Proposed public patios to be textured concrete flags. Use 600 x 600 x 35mm thick paving in 'Charcoal colour' or similar to be approved. All material build ups and laying specifications to engineer's and manufactures details, to include joints between flags. All levels and falls to be laid appropriately to avoid puddling.
- PROPOSED PRIVATE PATIOS:**  
Proposed private patios and paths to be textured concrete flags. Use 600 x 600 x 35mm thick paving in 'Buff colour' or similar to be approved. All material build ups and laying specifications to engineer's and manufactures details, to include joints between flags. All levels and falls to be laid appropriately to avoid puddling.
- PROPOSED RESIN BOUND GRAVEL PATH:**  
Proposed resin bound gravel paths. Use Resin Bound Gravel - Oyster Pearl colour or similar to be approved. Product to be installed on suitable sub-base materials with metal retaining edge and sawn natural stone setts retaining edge. All material build ups and laying specifications to engineer's and manufactures details. All levels and falls to be laid appropriately to avoid puddling.
- PROPOSED SERVICE AREA:**  
Proposed service area to include concrete paths and loose gravel. Locations shown as indicative, layout to be confirmed. Install concrete paths on suitable sub-base materials with pin kerb edges. Gravel area to be 10mm gravel on permeable membrane and suitable sub layers as required. All material build ups and laying specifications to engineer's and manufactures details. All levels and falls to be laid appropriately to avoid puddling.
- PROPOSED RAISED TIMBER PLANTERS:**  
Proposed raised timber planters to private patios and growing area to be shadow gap horizontally clad timber planters paint Cool Marble colour. Create planter internal frame using softwood timber with horizontally shadow gap sawn timber pailings creating the exterior cladding with timber coping, or similar to be approved. Ultimate height approximately 700mm. Includes internal membrane and suitable joining fixtures. All material build ups and laying specifications to engineer's and manufactures details.
- PROPOSED GREENHOUSE/POTTING SHED:**  
Proposed Greenhouse/Potting shed to be installed to growing area for the communal use. Use 10x12ft Greenhouse or similar to be approved. Install on concrete base. Product to be confirmed and constructed as per engineers and manufactures specification. All material build ups and laying specifications to engineer's and manufactures details.
- PROPOSED STAINLESS STEEL SPHERE WATER FEATURE:**  
Proposed stainless steel sphere water feature installed to growing area. Product to be approved. Includes associated electrics and ducting as required. Product and works to engineers and manufactures specification.
- PROPOSED ORNAMENTAL LIGHTING TO COMMUNAL AREAS:**  
Proposed ornamental lighting installed to communal areas. Use bollard light fixtures or similar to be approved. Includes associated electrics and ducting as required. Locations shown as indicative, products and locations to be approved. See TACE Consulting Engineers drawing for further details.
- PROPOSED TIMBER SEATING TO COMMUNAL AREAS:**  
Proposed timber seating to communal areas. Install products root fixed into concrete base / foundation. Install all produces as per manufacturers and engineers specification. Locations, product and quantities shown as indicative and to be approved by Client and Architect.
- PROPOSED 1.8M HIGH TIMBER FEATHERED EDGE FENCING:**  
Proposed 1.8m high treated softwood timber feathered edge fencing and associated gates. Use softwood timber with posts installed in concrete base / foundation. Install all produces as per manufacturers and engineers specification.
- PROPOSED 1.8M HIGH METAL WELDMESH BOUNDARY FENCE:**  
Proposed 1.8m high weldmesh perimeter fencing 'Green colour' with posts installed in concrete base / foundation. Install all produces as per manufacturers and engineers specification.
- PROPOSED 1.8M FLAT TOP METAL RAILINGS:**  
Proposed 1.8m high galvanised flat top metal railings with associated gates, colour Black. Install in concrete base / foundation. Install all produces as per manufacturers and engineers specification.
- PROPOSED 1.2M FLAT TOP METAL RAILINGS:**  
Proposed 1.2m high galvanised flat top metal railings with associated gates, colour Black to delineate private patio spaces. Install in concrete base / foundation. Install all produces as per manufacturers and engineers specification.

SOFT LANDSCAPE SCHEDULE

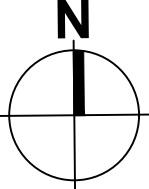
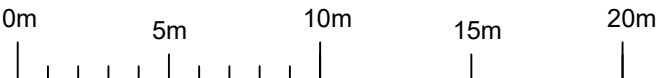
- PROPOSED NATIVE EXTRA HEAVY STANDARD TREE PLANTING:**  
Proposed Extra Heavy Standard (EHS) trees to provide autumn colour and instant structure. See TEL Landscape soft landscape drawings for details and specification:
- PROPOSED NATIVE STANDARD (SELECTED) TREES:**  
Native Standard (Selected) Trees to improve bio-diversity, structure and interest through fruit, blossom and autumn colour. See TEL Landscape soft landscape drawings for details and specification:
- PROPOSED ORCHARD TREES:**  
Proposed Orchard Fruit Trees to improve bio-diversity through fruit and blossom whilst providing interest. See TEL Landscape soft landscape drawings for details and specification:
- PROPOSED FEATURE TOPIARY IN CONTAINERS:**  
Proposed feature topiary to be 10-15L container grown installed in containers to highlight building entrance. See TEL Landscape soft landscape drawings for details and specification:
- PROPOSED SINGLE SPECIES ORNAMENTAL HEDGE:**  
Single species hedge 0.8-1.2m high to soften edges, delineate spaces and add instant structure to the site and the boundaries with particular winter interest. See TEL Landscape soft landscape drawings for details and specification:
- PROPOSED ORNAMENTAL SHRUB PLANTING:**  
Low maintenance, low growing shrub planting to provide all year interest, colour and structure while improving bio-diversity and habitat creation. See TEL Landscape soft landscape drawings for details and specification:
- PROPOSED LOW MAINTENANCE TURF:**  
New areas to be turfed on minimum 100mm imported topsoil following completion of ground works. See TEL Landscape soft landscape drawings for details and specification:
- PROPOSED LOW MAINTENANCE GRASS SEED:**  
New areas to be seeded on minimum 150mm imported topsoil following completion of ground works. See TEL Landscape soft landscape drawings for details and specification:
- PROPOSED SPRING BULB PLANTING:**  
Proposed spring bulb planting to be installed to grassed areas. See TEL Landscape soft landscape drawings for details and specification:
- PROPOSED HERITAGE GRASS AND WILDFLOWER SEED MIX:**  
Low maintenance grass and wildflower seed mix to provide varied textures and species whilst creating natural open spaces and improving habitat creation. See TEL Landscape soft landscape drawings for details and specification:

FOR PLANNING

PROJECT	CARE HOME, STANDEN, CLITHEROE	SCALE	1 / 250 @A1	DATE	30 / 01 / 2023
TITLE	HARD LANDSCAPE SPECIFICATION	DRAWN BY	MB	REVIEWED	TL
Woodside, Carter's Lane, Ilkley, West Yorkshire, LS29 0DQ		phone : 01943 512010	DRAWING NO	MR22-142/102	REVISION
www.telandscape.co.uk		info@telandscape.co.uk	mobile : 07855 770428		/

This drawing and the words depicted thereon are the copyright of TEL Landscape Architects and may not be used, copied or otherwise altered by written permission.

SCALE



Potential for gated access to be wide enough for emergency service vehicle access. To be confirmed.

Fire escape path shown as indicative. To be confirmed with appropriate governing body.

landscapearchitects

tel