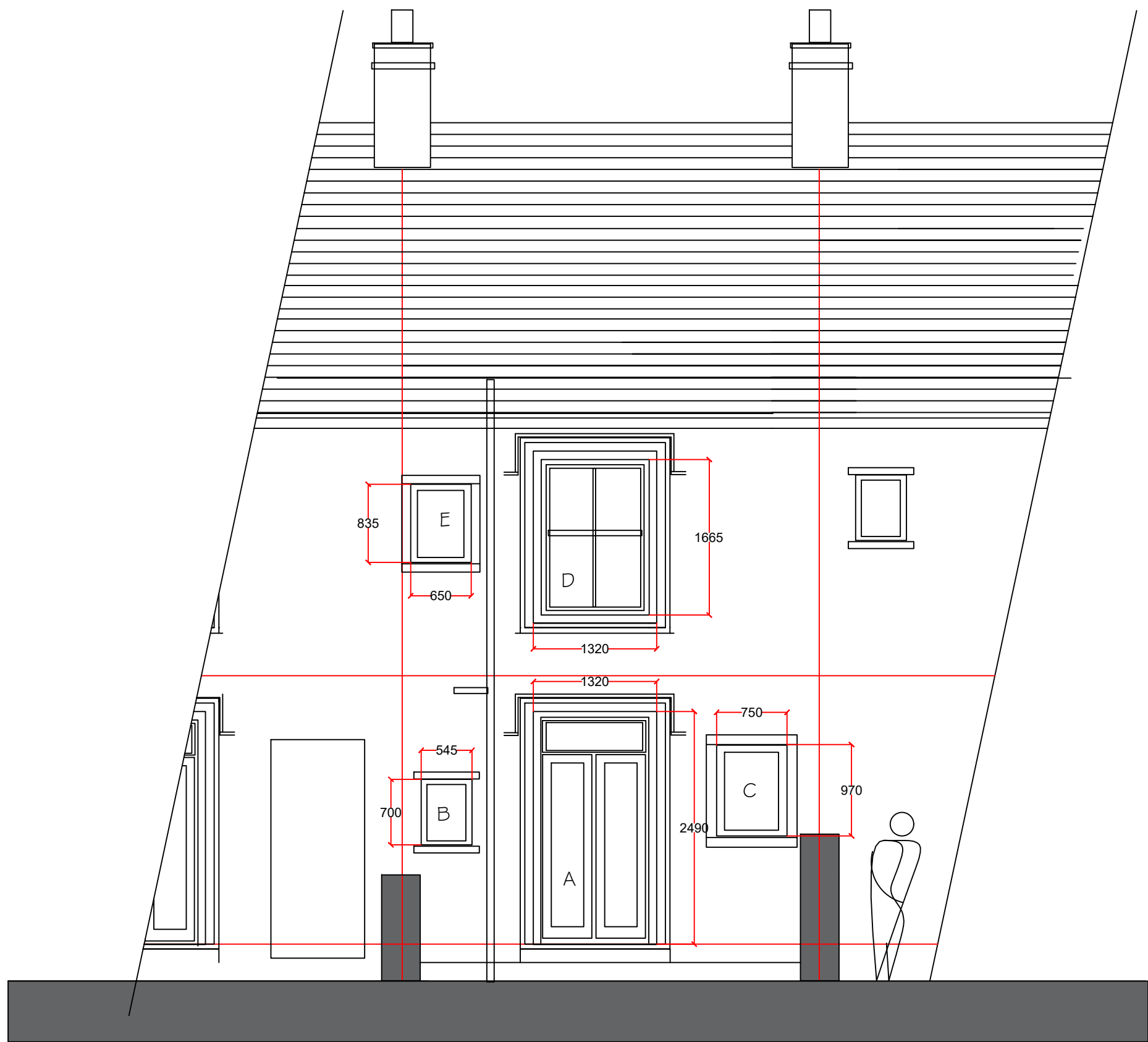
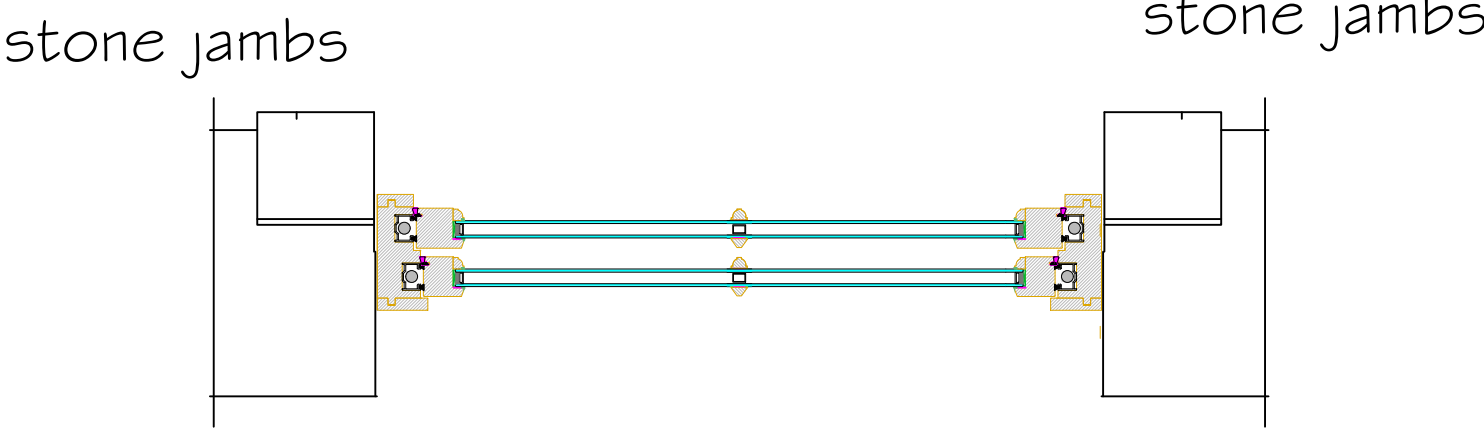
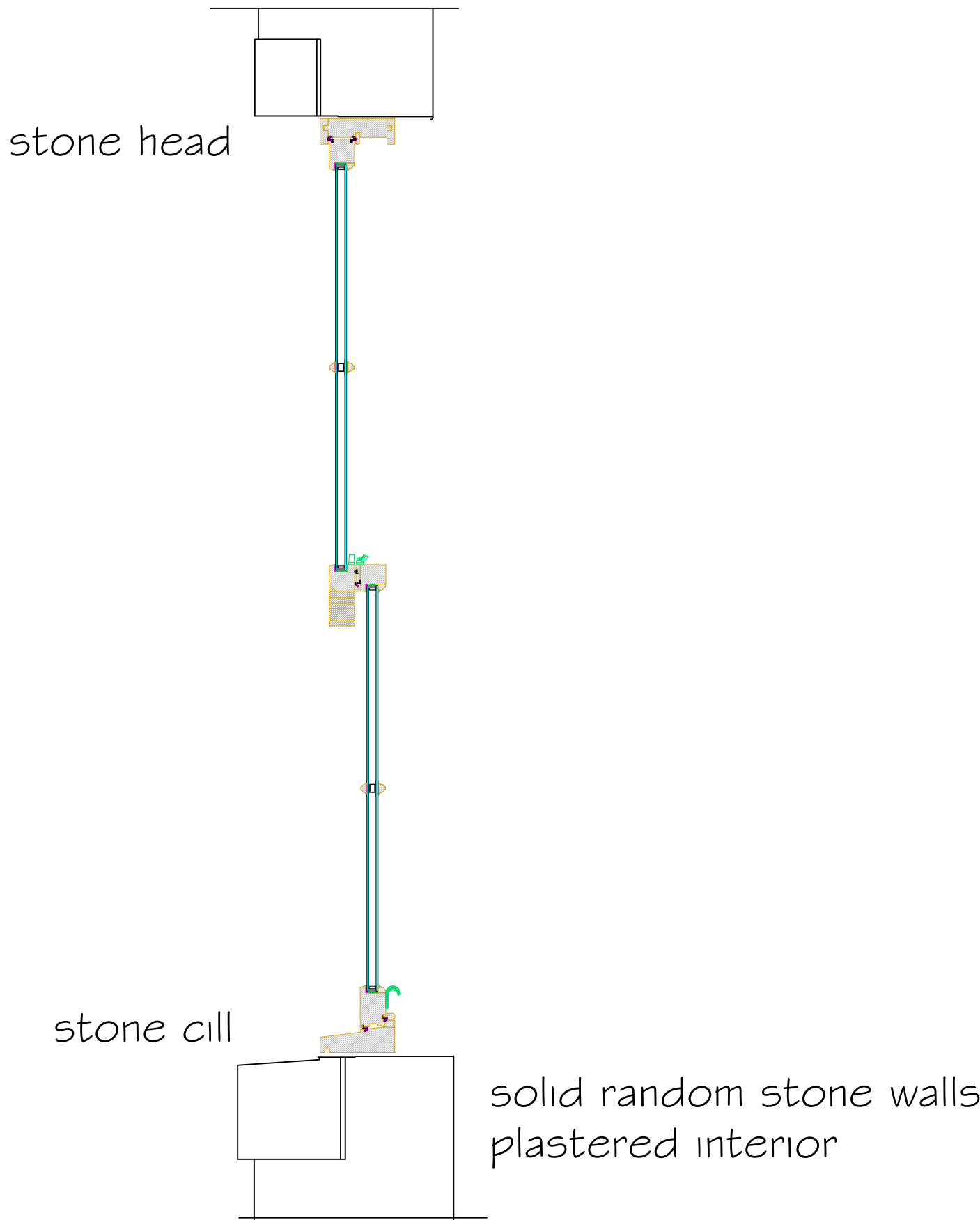


PROPOSED FRONT ELEVATION 1:50



PROPOSED REAR ELEVATION 1: 50



### WINDOW DETAILS

New traditional timber sash windows to be positioned and fixed in the same alignment as the existing. The existing stone heads and cills will be retained and the new timber frames to be located to bridge the joint between the stone features and the stone walling. The rear elevation has moulded stone surrounds which will be retained. The window/door framing will be positioned as per the front elevation windows lapped 25mm over the stone features to retain the historic aesthetic.

The proposal is the subject of a listed building application.

The works involve the replacement of all the existing UPVC window frames, rear double door and front door to be replaced with new timber sash windows and doors.

The heritage statement provides supporting information for the application.

- A - UPVC DOUBLE DOOR SET WITH FANLIGHT OVER
- B - UPVC FIXED WINDOW FRAME
- C - UPVC FIXED WINDOW FRAME
- D - UPVC CASEMENT WINDOW FRAME
- E - UPVC CASEMENT WINDOW FRAME
- F - UPVC SASH WINDOW
- G - UPVC SASH WINDOW

Notes.

notes.

THIS DRAWING IS PRODUCED FOR THE LISTED BUILDING CONSENT APPLICATION ONLY

REV C – WINDOW SECTION AND RENDER REMOVED

REV B – WINDOW SECTION AND PLAN DETAIL/DIMENSIONS

REV A – FANLIGHT REINSTATED TO REAR DOOR

Project .

3 THE SQUARE  
WHALLEY  
LANCASHIRE

Client.

PETER INNERDALE

drawing title:

PROPOSED PLANS &  
ELEVATIONS

status.

scale.

1:50 AT A1

Drawn by:

checked:

PH

Date.

18.3.2024

project no.

PHA/1200

dig no.

100

rev.

C