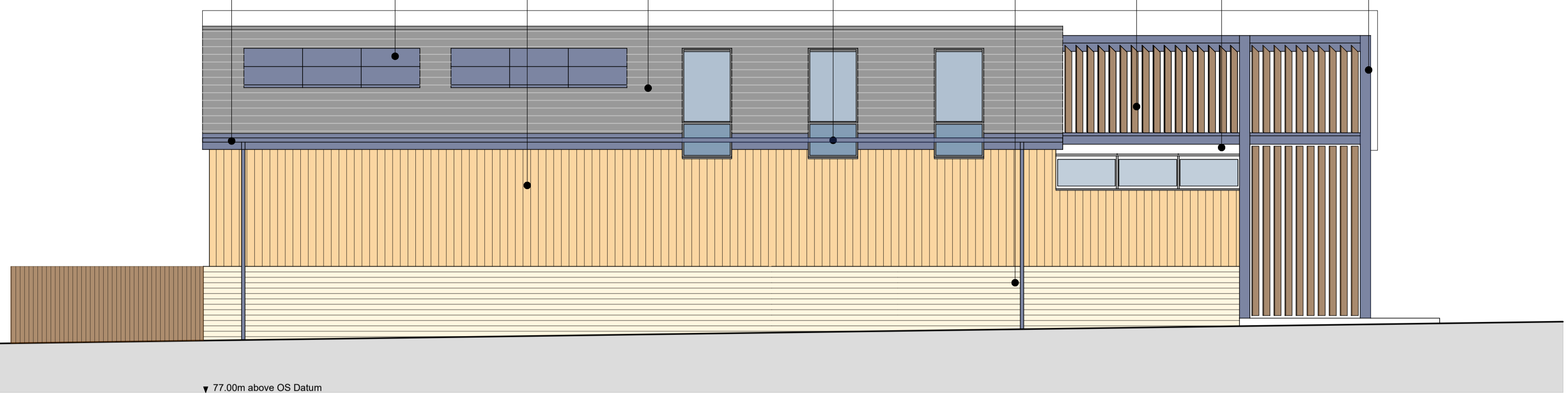


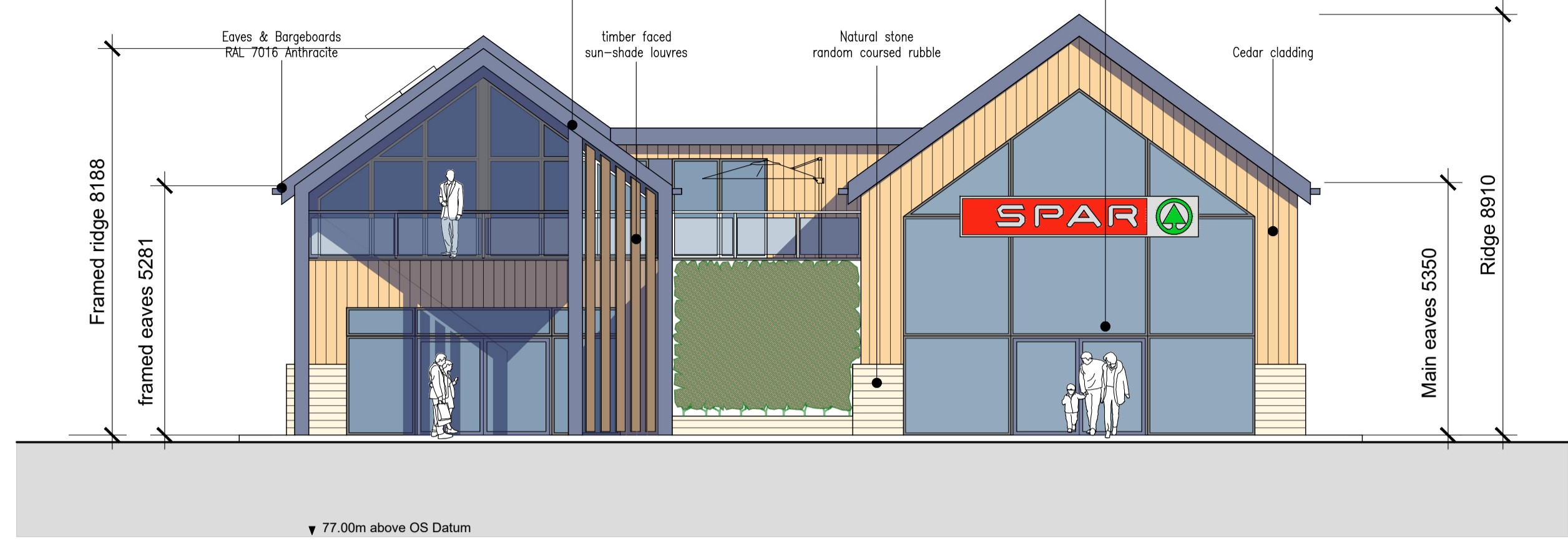
Notes: Do not scale from this drawing. This drawing is to be read in conjunction with all relevant design team specifications and drawings. All dimensions are to be checked on site prior to commencement of work any variations to be reflected to the Project Architect. All components and materials are to be stored, protected, handled and installed in accordance with the manufacturer's recommendations. ©Harry Walters & Livezey Ltd.

Eaves & Bargeboards RAL 7016 Anthracite
 PV panels to be installed to roof, number to be confirmed by specialist installer.
 Cedar cladding
 Natural grey slate
 Fixed glazed combination windows Alum. frames RAL 7036
 Natural stone random coursed rubble
 timber faced sun-shade louvres
 Stainless steel balustrade with glass infill panels patch fittings
 Steel framing RAL 7016 Anthracite



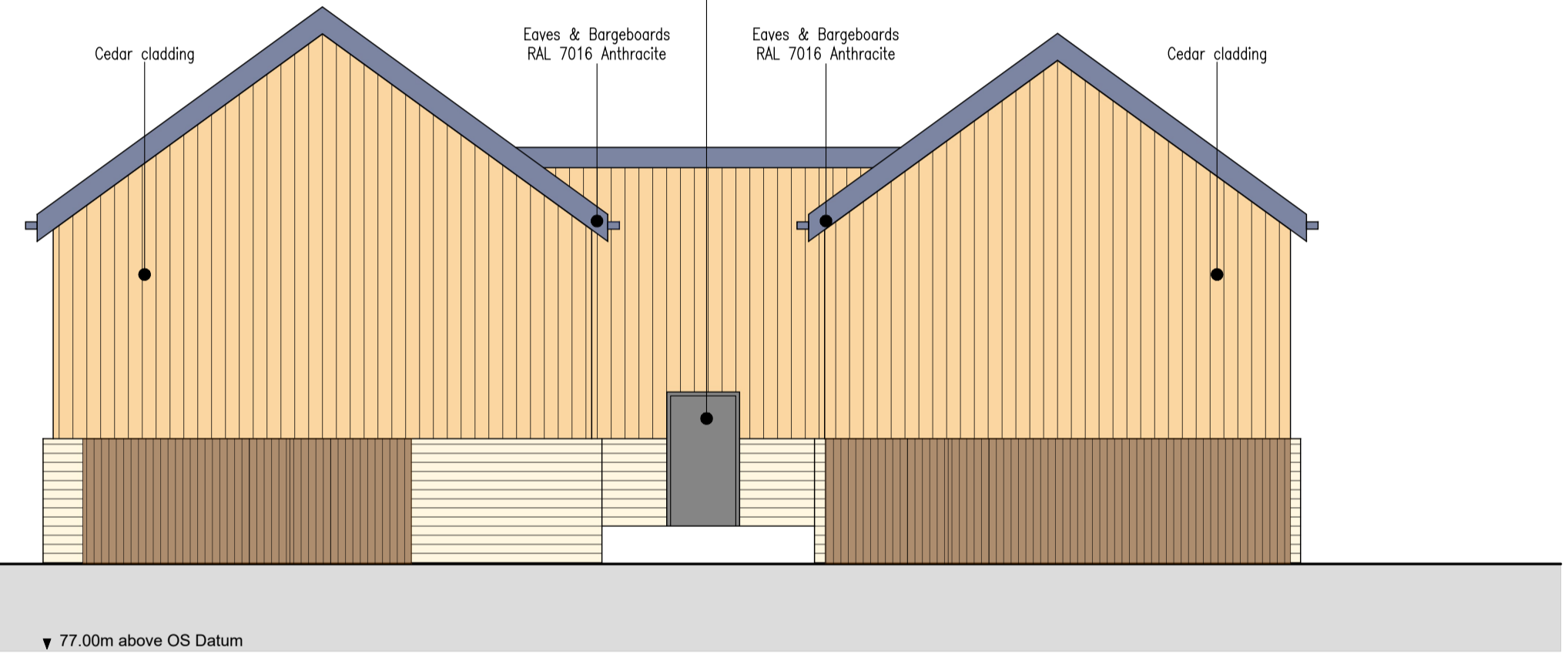
▼ 77.00m above OS Datum
SOUTH EAST ELEVATION

Steel framing RAL 7016 Anthracite
 timber faced sun-shade louvres
 Natural stone random coursed rubble
 Cedar cladding
 Aluminium shop front windows and automatic sliding entrance door in powder coated aluminium frames, colour RAL 7037



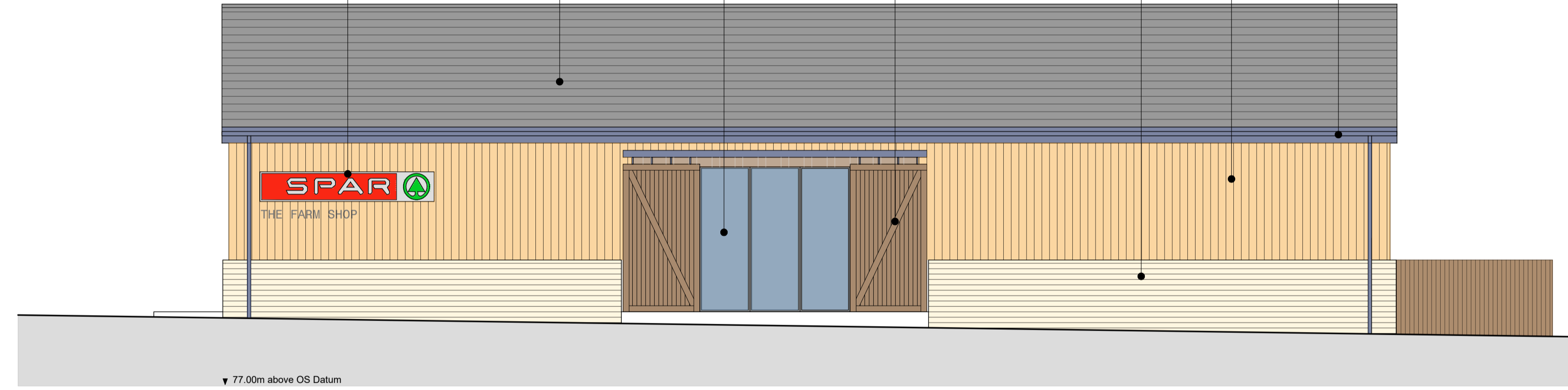
▼ 77.00m above OS Datum
NORTH EAST ELEVATION

Security Doors & frame (SC2) RAL 7036
 Cedar cladding
 Eaves & Bargeboards RAL 7016 Anthracite
 Eaves & Bargeboards RAL 7016 Anthracite
 Cedar cladding

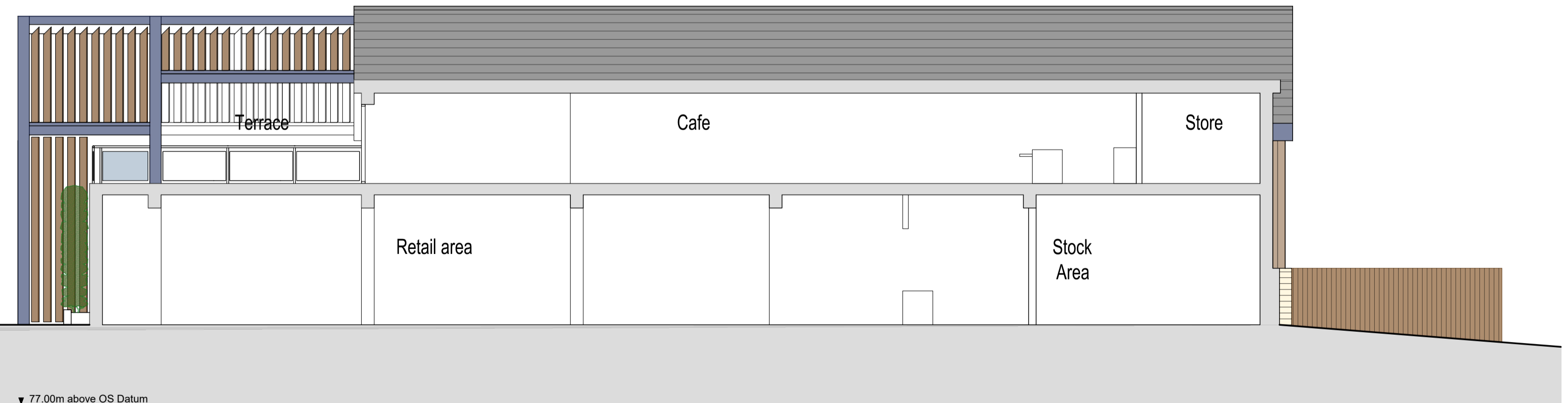


▼ 77.00m above OS Datum
SOUTH WEST ELEVATION

Shop signage subject to separate application
 Natural grey slate
 Aluminium windows in powder coated aluminium frames, colour RAL 7037
 Timber ledged battened & braced timber sliding doors
 Natural stone random coursed rubble
 Cedar cladding
 Eaves & Bargeboards RAL 7016 Anthracite



▼ 77.00m above OS Datum
NORTH WEST ELEVATION



▼ 77.00m above OS Datum
SECTION A-A



CLIENT	James Hall & Co	PROJECT NAME	Alston Dairy
DRAWING NAME	Proposed Elevations & Section Farm Shop	SCALE	1:100
DATE	Aug 2023	DRAWN BY	KMc
JOB NUMBER	702	REV No	RI
Registered Office • James Hall Spar Distribution Centre Bowland View Fulwood • Preston • Lancashire • PR2 5QT • Company No. 0628823		K.M. McFadyen, Dip. Arch. R.I.B.A. Tel No: 01772 706696 Email: office@HWL1.com	