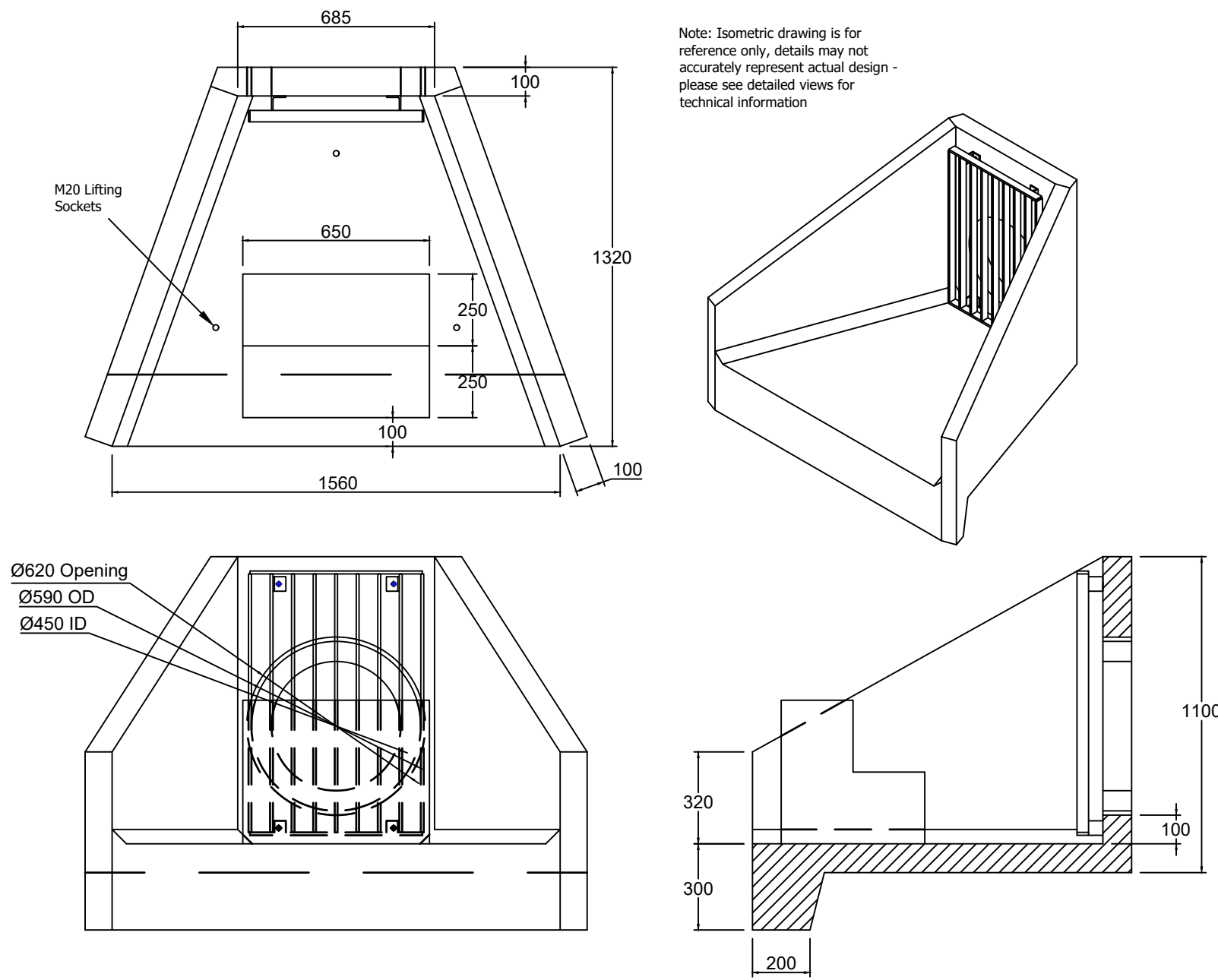


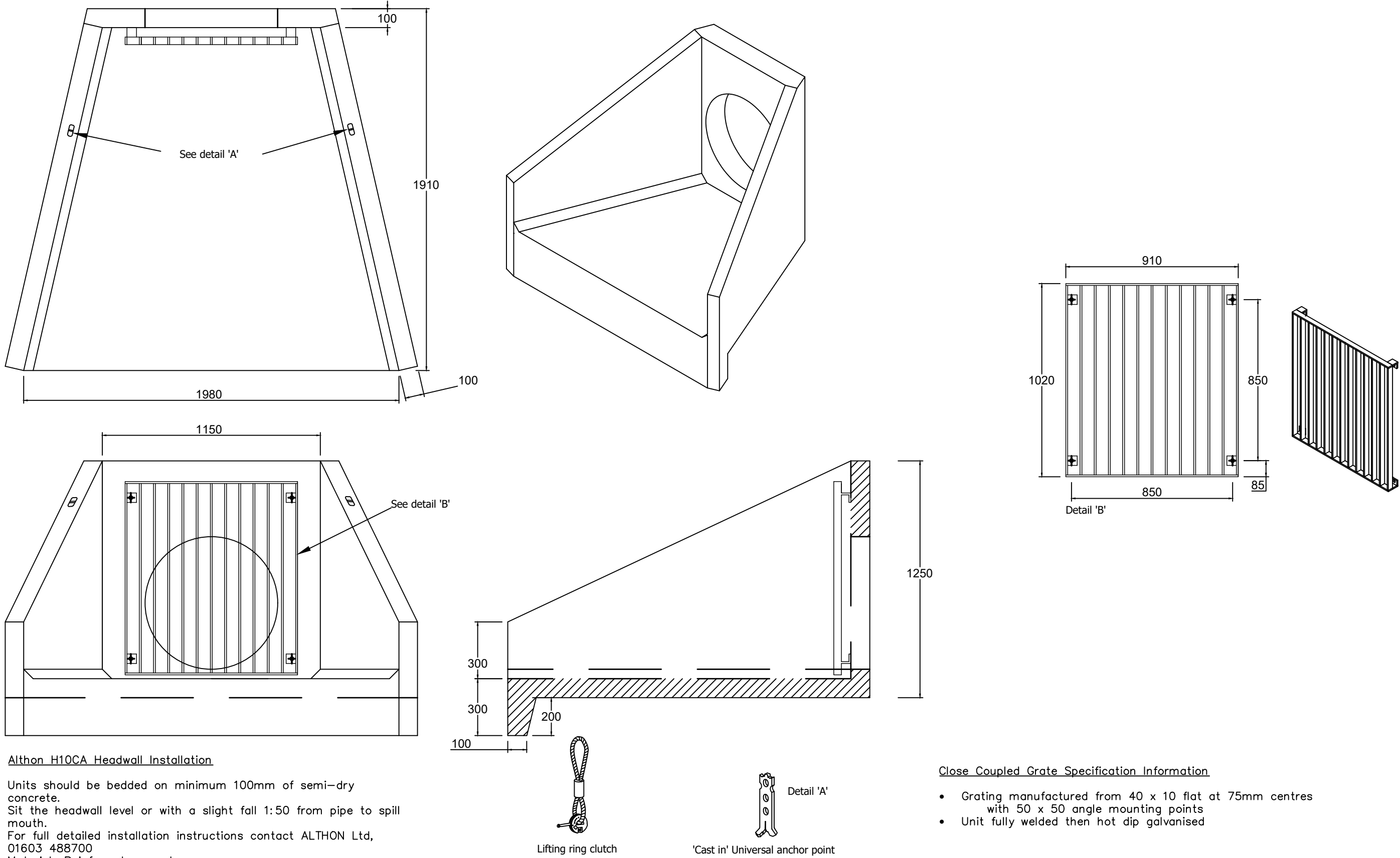
IF IN DOUBT - ASK

H10CA Specification Information

- Opening in back all cast to suit outside diameter of the pipework
- Invert level of pipe can be set to your specification
- H10CA suitable for pipework up to 750mm ID twin wall or clay / 750mm ID concrete



H6CA Headwall refers to S70

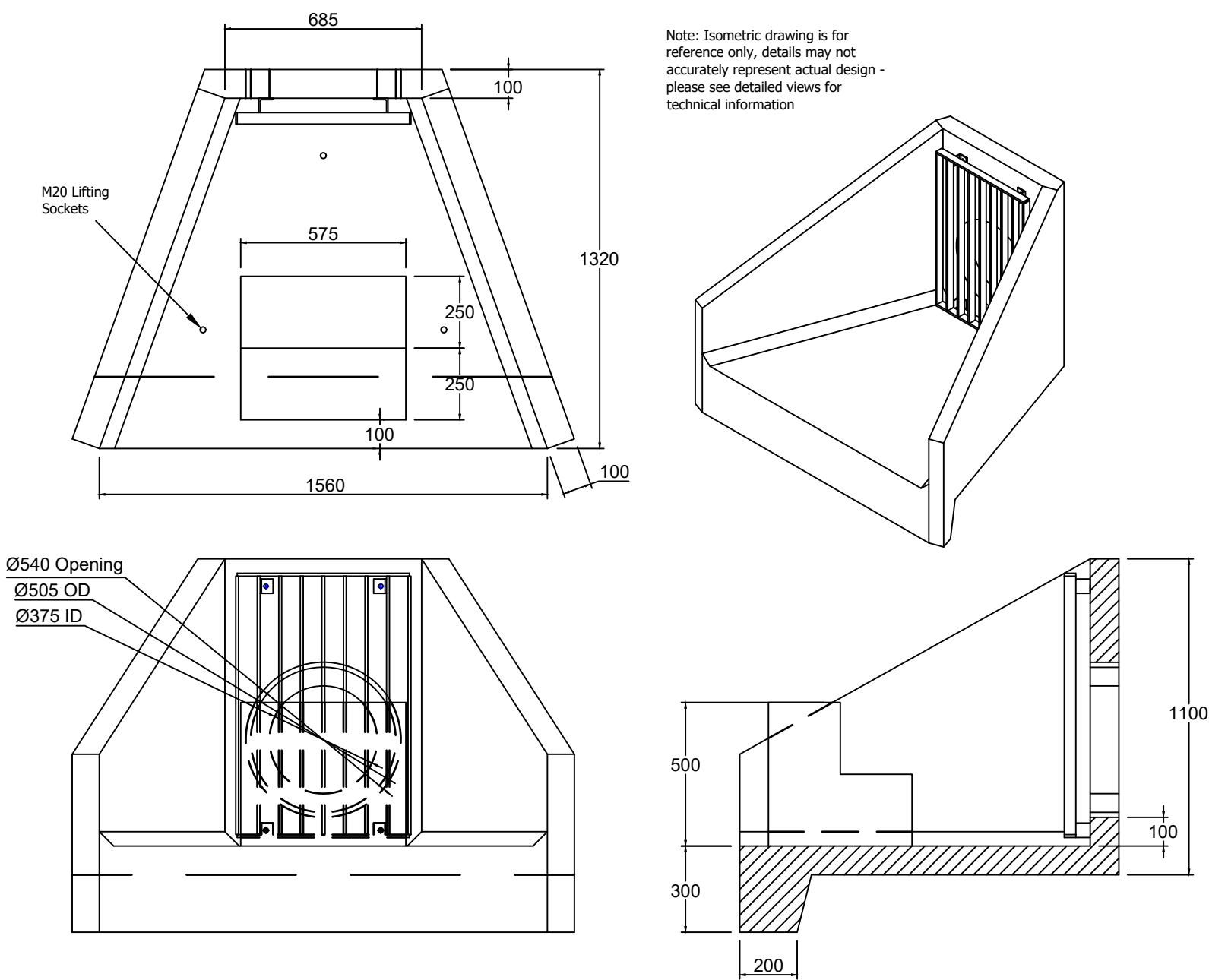


Althon H10CA Headwall Installation

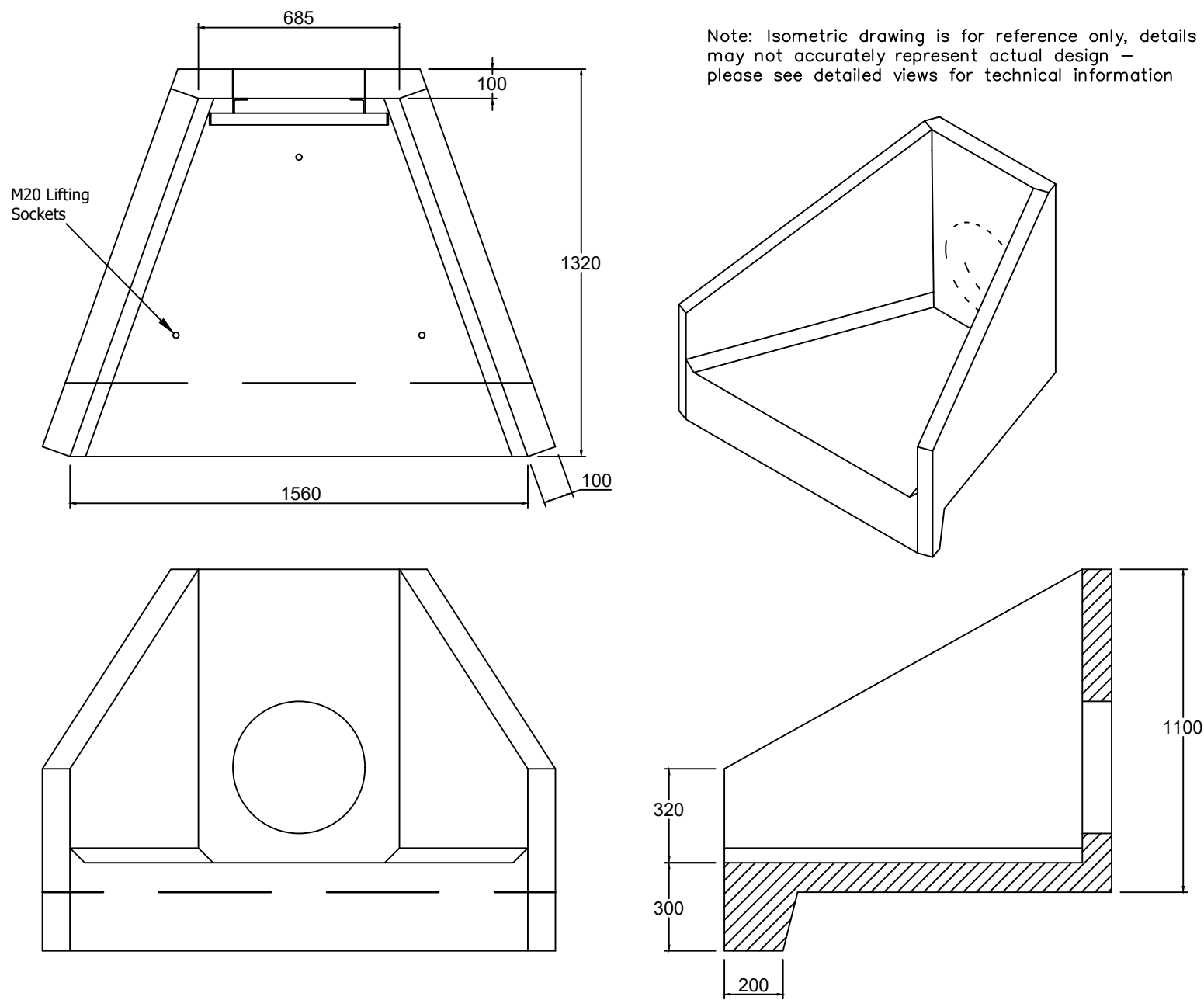
Units should be bedded on minimum 100mm of semi-dry concrete.
Sit the headwall level or with a slight fall 1:50 from pipe to spill mouth.
For full detailed installation instructions contact ALTHON Ltd, 01603 488700
Material: Reinforced concrete
Weight approximately 2000kg
All dimensions in mm

Close Coupled Grate Specification Information

- Grating manufactured from 40 x 10 flat at 75mm centres with 50 x 50 angle mounting points
- Unit fully welded then hot dip galvanised



H6CA Headwall refers to S96



H6CA Headwall refers to H1-H6

Notes

This drawing is to be read in conjunction with the Construction (Design and Management) Regulations 2015.

1. This drawing is to be read in conjunction with:- Lees Roxburgh drawing series 6196, architects and designers drawings and details.

2. Construction details to be in accordance with Lancashire design guide.

3. The contractor shall comply with the following:-
a. All operations should be carried out in accordance with the general health and safety policy of Kier Living Ltd and all relevant health and safety legislation.
b. The local authority and service companies are to be notified prior to commencement of work on site.
c. Prior to construction the actual positions and depths of services likely to be affected by the works should be established by means of hand dig in close liaison with the service companies. the contractor shall immediately advise Lees Roxburgh of any services exposed which may affect the design.
d. The location and depth of any services/apparatus shown is approximate only and has been based on plans received from the statutory undertakers.
e. Lees Roxburgh Ltd do not accept any responsibility for the accuracy of this or any other drawings which indicate the position and/or depth of services/apparatus.
f. The contractor must contact the relevant statutory undertakers and be in possession of the latest available drawings from the statutory undertakers which shows details of their services/apparatus.

4. All gravity sewerage works to be in accordance with "Sewers for Adoption" 6th Edition and United Utilities standard details. Foul Pump Station to be designed to "Sewers for Adoption" 7th Edition and United Utilities standard details.
5. Lees Roxburgh's appointment is restricted to the design of the permanent civil/structural works only and have no site role. The contractor is thus entirely responsible for compliance with the Health and Safety at Work Act. They shall be specifically responsible for all temporary works and for the stability of the affected land and structures.

6. For legal site boundary see deeds plans in possession of client.

7. All dimensions shown are in metres unless indicated otherwise.

The details provided on this drawing are subject to comment by all the relevant approving authorities. Until such time as all comments have been received and incorporated onto the drawings, all the information provided and associated costing's, are used at Kier Living Ltd risk and no liability will be accepted by Lees Roxburgh Ltd.

Prior to any construction, the contractor must confirm the precise location, invert level and pipe diameter of the receiving drainage system, and the existing combined network. Lees Roxburgh must be advised immediately of any variation to that which the design has been based.

B	Outfall headwalls amended to show dissipation block.	DW	31.01.19
A	Close coupled grate specification added, Sheet 2 added & details amended to redesign.	NL	29.06.18
Rev	Revision	By	Date



Preston Road
Longridge

Headwall Details

Lees Roxburgh
Consulting Engineers
The Genesis Centre
Science Park South
Birchwood
Warrington
WA3 7BH
01925 812898
office@leesroxburgh.co.uk
www.leesroxburgh.co.uk

Job No.	Drawing No.	Revision.
6196	02-10-1	B
Scale 1:20@A1	Date February 2018	
Drawn By	Designed By	Checked By
DM	DM	CB