

## Applications - 3/2023/0086 LBC

### Condition 3 – Applying for a partial discharge.

#### Walling materials

Where the men's toilet block is removed, the removed stone will be reused to rebuild the external wall.

The window surrounds from one of the removed windows on the toilet block will be used to surround the new window on the rebuilt external wall. (See window repair document).



*(note – the stone and materials surrounding belong to the adjacent barn)*

## Roofing materials

No current changes are being made to the pitched roof.

Any changes made later; materials and spec will be submitted for approval.

## Condition 4 - Windows

Please see window repair document and window plan for further information, in addition to SPA DOC-PR01 previously submitted.

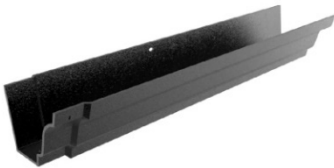
## Condition 5 - Rainwater goods

Proposed materials:

### MOULDED OGEE

[HTTPS://WWW.ROOF2FLOORDRAINS.CO.UK/10760-MOULDED-OGEE](https://www.roof2floordrains.co.uk/10760-MOULDED-OGEE)

Cast Aluminium Moulded Ogee Gutters are made using traditional castings, so they are the perfect alternative to cast iron for refurbishment projects and especially suited to conservation, heritage and listed properties. With the associated Benefits of Aluminium.



[https://www.roof2floordrains.co.uk/moulded-ogee/10206-922063-cast-aluminium-moulded-46-gutter-183m-length.html#/952-colour-mill\\_finish\\_non\\_painted/984-gutter\\_size-100mm\\_4](https://www.roof2floordrains.co.uk/moulded-ogee/10206-922063-cast-aluminium-moulded-46-gutter-183m-length.html#/952-colour-mill_finish_non_painted/984-gutter_size-100mm_4)



[https://www.roof2floordrains.co.uk/cast-aluminium-hoppers/10014-924114-cast-aluminium-large-corner-rainwater-hopper-head.html#/952-colour-mill\\_finish\\_non\\_painted/2355-downpipe\\_size-76mm](https://www.roof2floordrains.co.uk/cast-aluminium-hoppers/10014-924114-cast-aluminium-large-corner-rainwater-hopper-head.html#/952-colour-mill_finish_non_painted/2355-downpipe_size-76mm)



[https://www.roof2floordrains.co.uk/cast-socketed-round-downpipe/10024-894805-aluminium-cast-socketed-round-downpipe-eared.html#/952-colour-mill finish non painted/1174-downpipe size-63mm/1915-length-05m](https://www.roof2floordrains.co.uk/cast-socketed-round-downpipe/10024-894805-aluminium-cast-socketed-round-downpipe-eared.html#/952-colour-mill%20finish%20non%20painted/1174-downpipe%20size-63mm/1915-length-05m)

### **Condition 8 - CMP**

Please refer to separate document and plan.

### **Condition 12 - Boundary Treatments**

Laurel hedges to be planted along the boundary – see plan.

Hedges to be grown to 1.5 meters tall.

80 plants, 20-30cm tall, planted at 75cm apart.



Wooden gates as per plan:



(3 foot pedestrian gate and 12 foot vehicle gate)