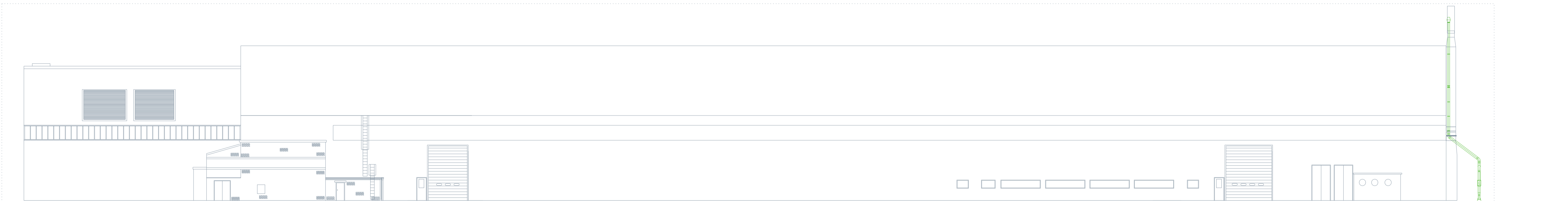
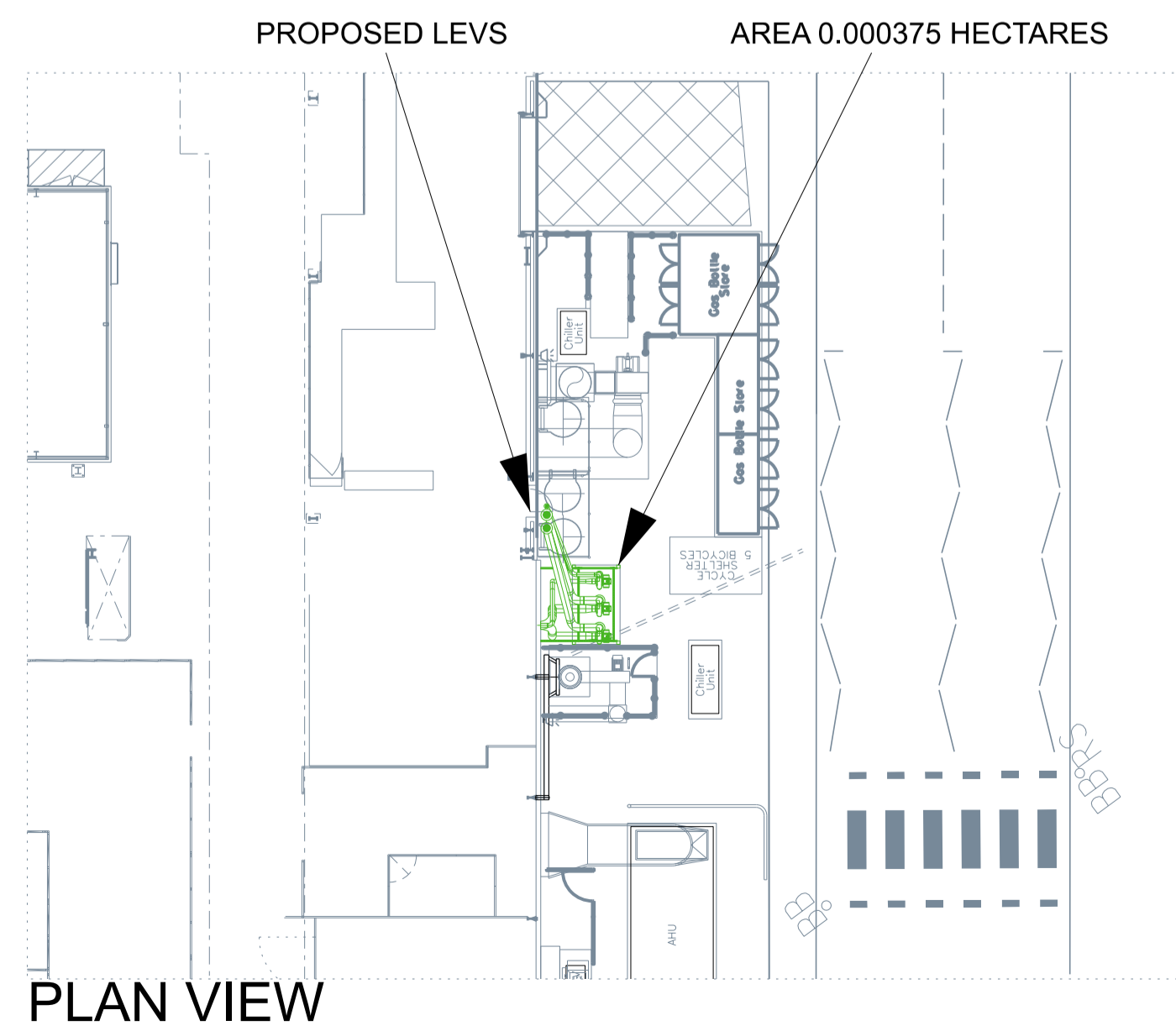
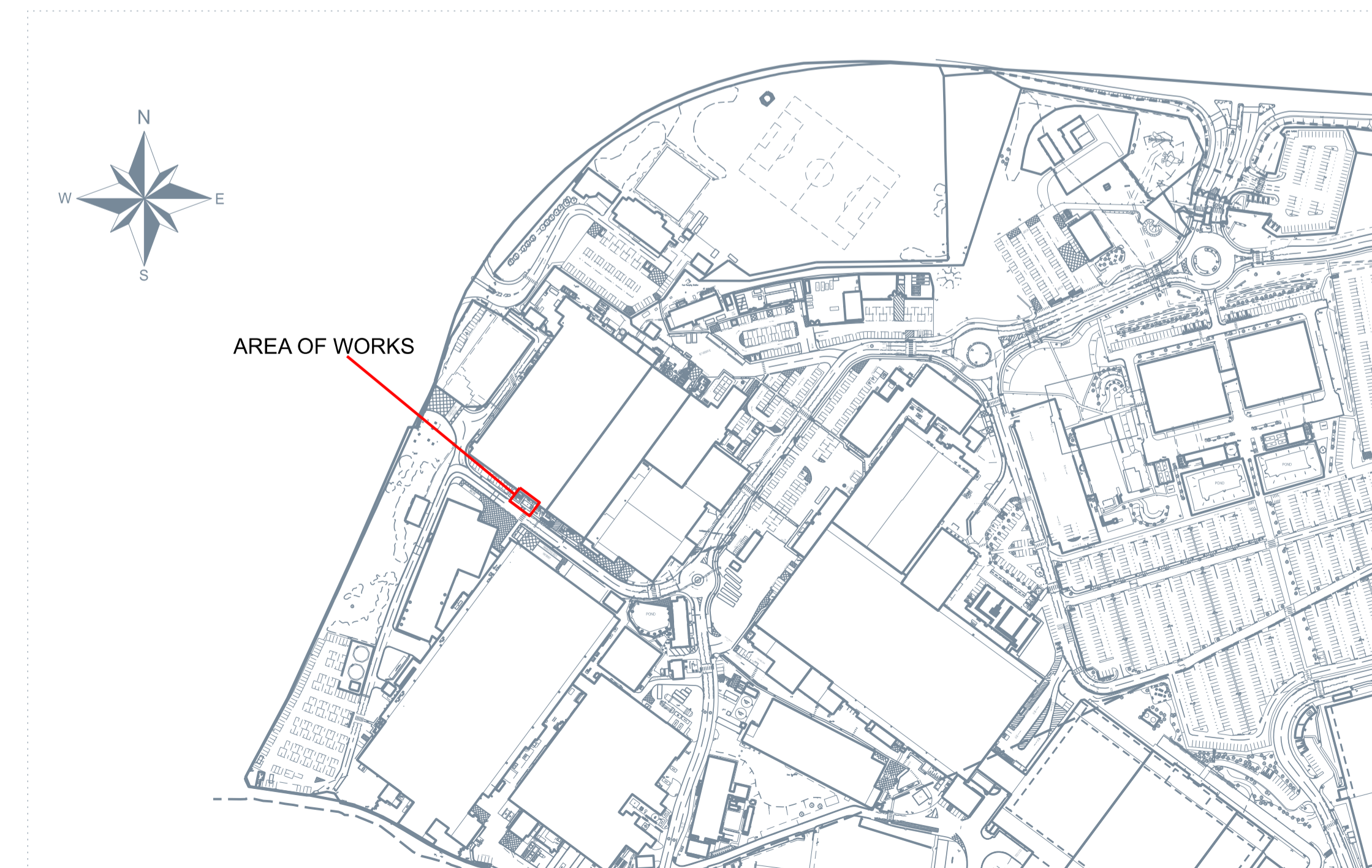


WEST ELEVATION



NORTH ELEVATION



PLAN VIEW

Rev.	Description	Date
<p>No part of this drawing may be copied or reproduced or any information contained on this drawing given to a third party without the prior written permission of: Infrastructure and Facilities Services - Air BAE Systems (Operations) Ltd. This drawing contains information, as held on the I&FS FM CAD System at the date of printing only... 08/02/2024</p>		
<p>Project 22S0137 - LEV REPAIRS & REPLACEMENT BENCHES</p>		
<p>Title PLANNING APPLICATION - DETAILED PLAN NEW LEVS</p>		
<p>Status S4 Suitable For PLANNING APPROVAL</p>		
Designer A SMITH	Engineer <NAME>	Date Created 07/02/24
Scale 1:200 @ A1	Project/Sheet Number 22S0137 / 004	
Drawing Reference 22S0137DG_004		Rev. A
<p>Infrastructure and Facilities Services - Air BAE SYSTEMS SAMLESBURY AERODROME BALDERSTONE BLACKBURN LANCASHIRE BB2 7LF Tel: 03300 476166</p>		
<p>BAE SYSTEMS</p>		
<p>Samlesbury Site © BAE Systems (Operations) Ltd. All rights reserved</p>		
<p>Company Marking BAE SYSTEMS PROPRIETARY</p>		
<p>Government Marking NOT APPLICABLE</p>		