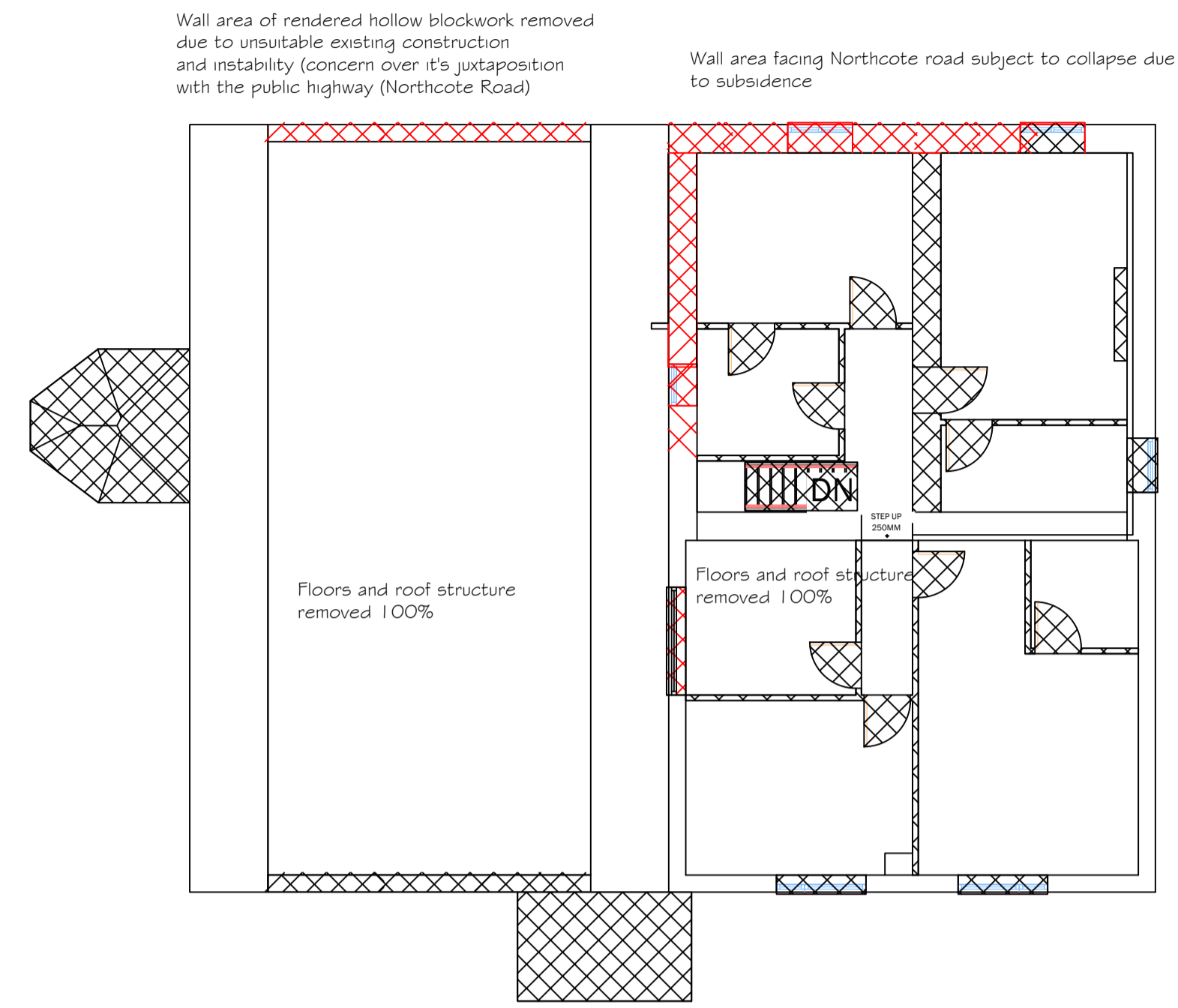


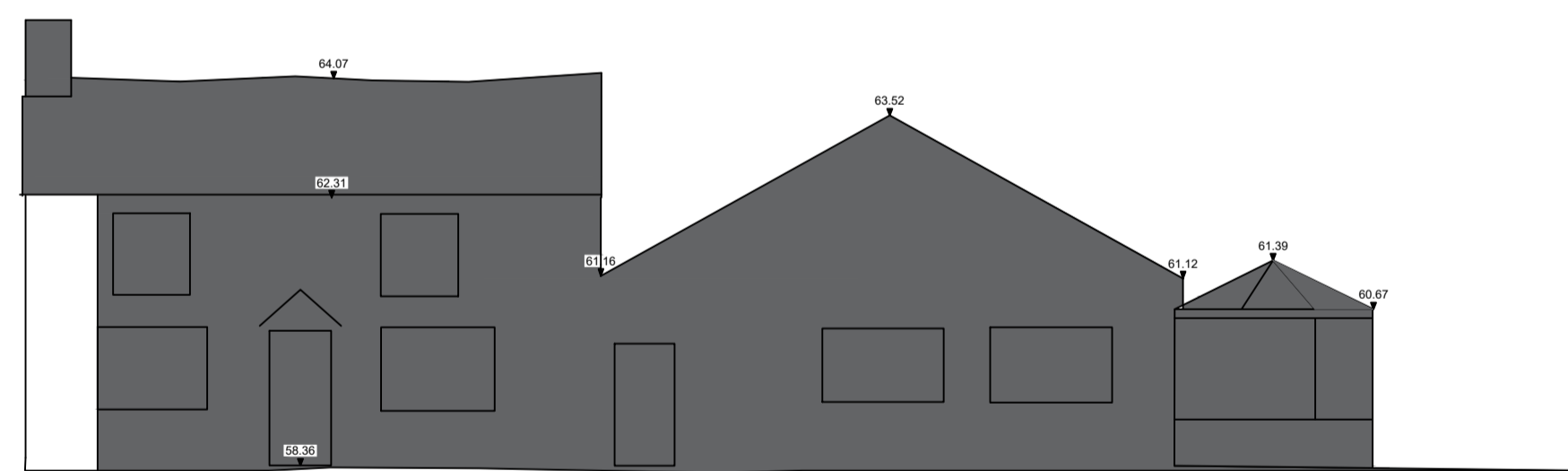
GROUND FLOOR DEMOLITIONS



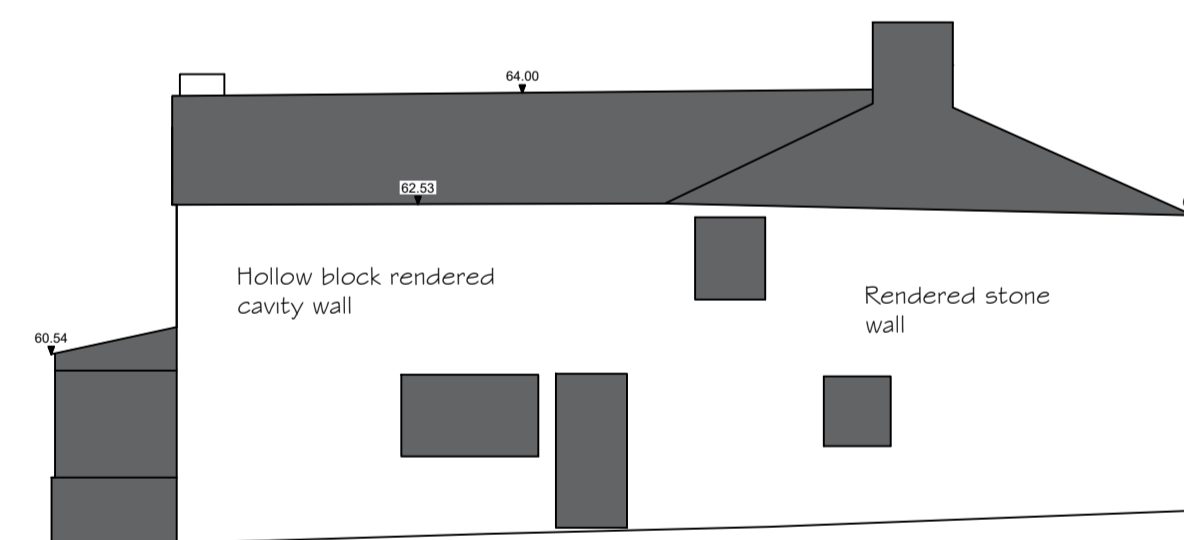
FIRST FLOOR DEMOLITIONS

NOTES

The demolitions as approved are demonstrated by the white cross hatching on the plans which are as the approved plans A1.7 & A1.8. The red cross hatching shows the extent of the collapse and demolitions carried out. The shaded areas on the elevations show the extent of the demolitions (including openings to be altered/infilled etc) to the external walls as carried out including the areas as approved. Internal walls and floors are also stripped away as approved including the complete removal of the entire roof structure to facilitate the re-development works. Refer to the supplementary sheet (AG.7) which shows the existing and proposed (as approved) elevations and the extent of the redevelopment by virtue of the pink shaded areas to all four facades. Refer to the supporting statements which provides further information.



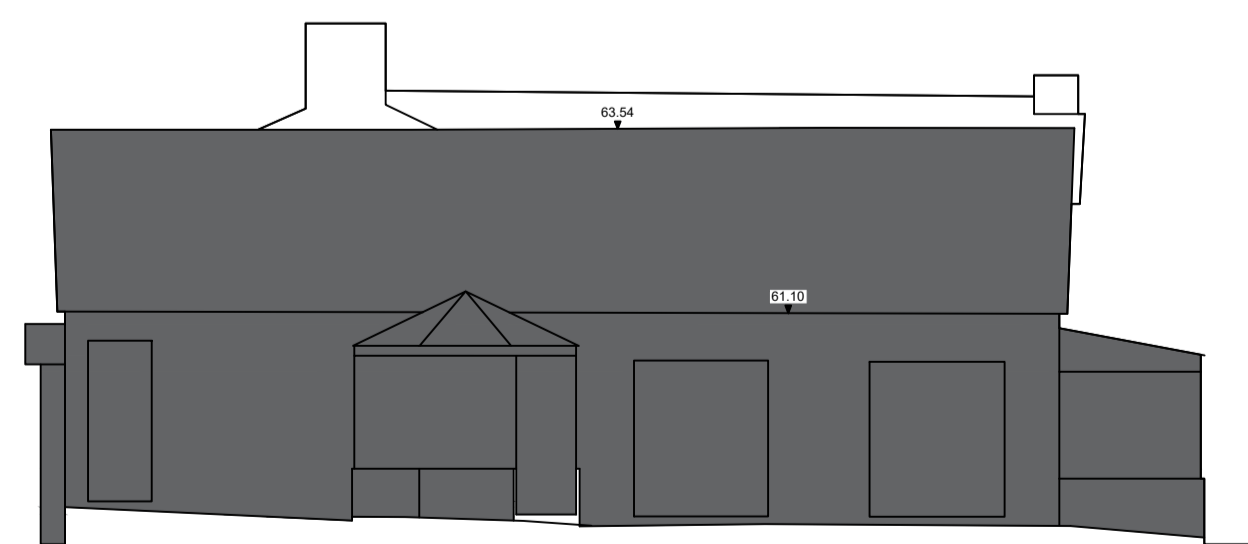
SOUTH WEST ELEVATION AS COLLAPSED/DEMOLISHED



NORTH WEST ELEVATION (future demolitions)



SOUTH EAST ELEVATION AS DEMOLISHED (and future demolitions)



NORTH EAST ELEVATION AS DEMOLISHED

Notes.		
notes.		
Project. KEEPERS COTTAGE PROPOSED BOUTIQUE HOTEL		
Client. FORTIS HOSPITALITY SOLUTIONS (GLOBAL) LTD		
Drawing title: DEMOLITIONS (AS CARRIED OUT)		
Status.		
Scale: 1:100 AT A1		
Drawn by:	Checked:	PH
Date: 19 MARCH 2024		
Project no. PHA/750	Fig. no. 100/2	Rev.