

Stanton Andrews do not accept liability for any loss or degradation of information held in the drawing resulting from the translation from the original file format to any other file format or from the recipients reading of it in any other programme, or an earlier version of the programme. Stanton Andrews accepts no liability for use of this drawing by parties other than the party for whom it was prepared or for purposes other than those for which it was prepared.

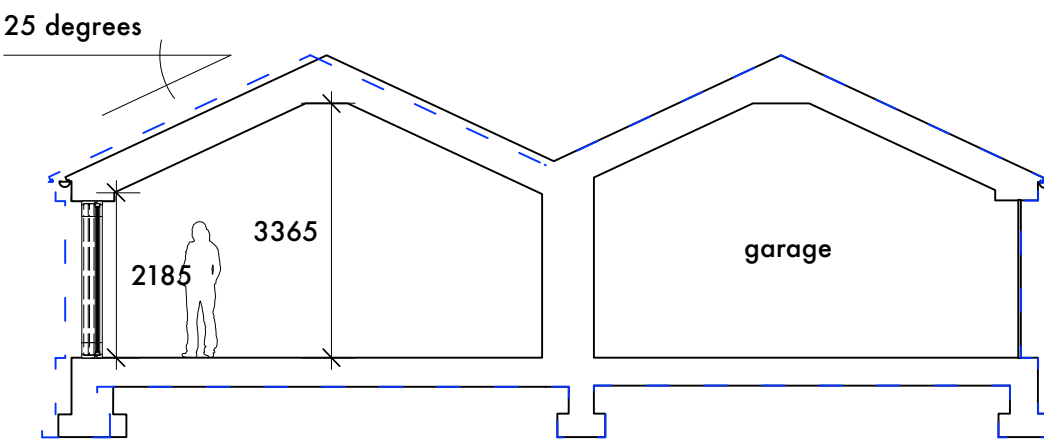
Do not scale, use figured dimensions only. All dimensions to be checked on site. This drawing should be printed and read at the original size, as stated in title block. Stanton Andrews accept no responsibility for errors that occur as a result of reviewing this drawing at any other size. Stanton Andrews to be notified of any discrepancies before proceeding.

DWG issues - when this drawing is issued in DWG format it is an uncontrolled version and is provided to enable the recipient to prepare its own documents/drawings for which it is solely responsible. It is based on background information current at the time of issue. Stanton Andrews accepts no liability for any alterations to, additions to or discrepancies arising out of changes to such background information which occur after it has been issued by Stanton Andrews.

This drawing must be printed in colour, if this text is not RED the drawing must be reprinted.

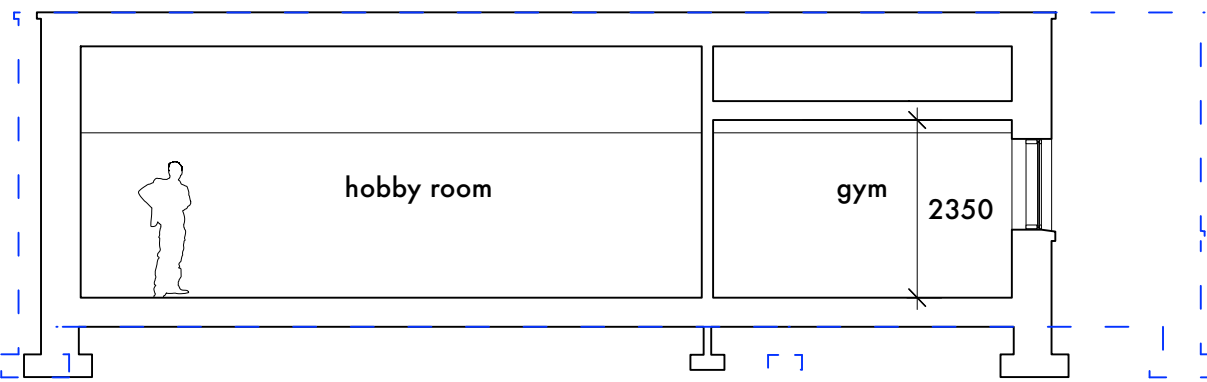
As existing drawings based on information provided by others - no measured survey of the property has been undertaken by the architect. This drawing is subject to copyright.

revision	date	note
A	april 2024	issued for planning application.
B	august 2024	footprint reduced as requested.
C	august 2024	footprint further reduced.



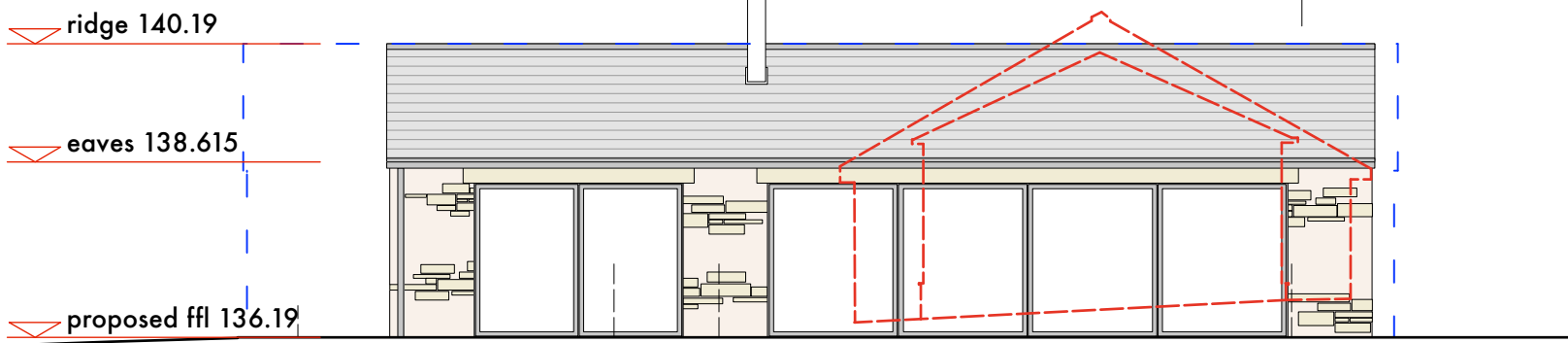
section B

blue broken line indicates profile of previous scheme

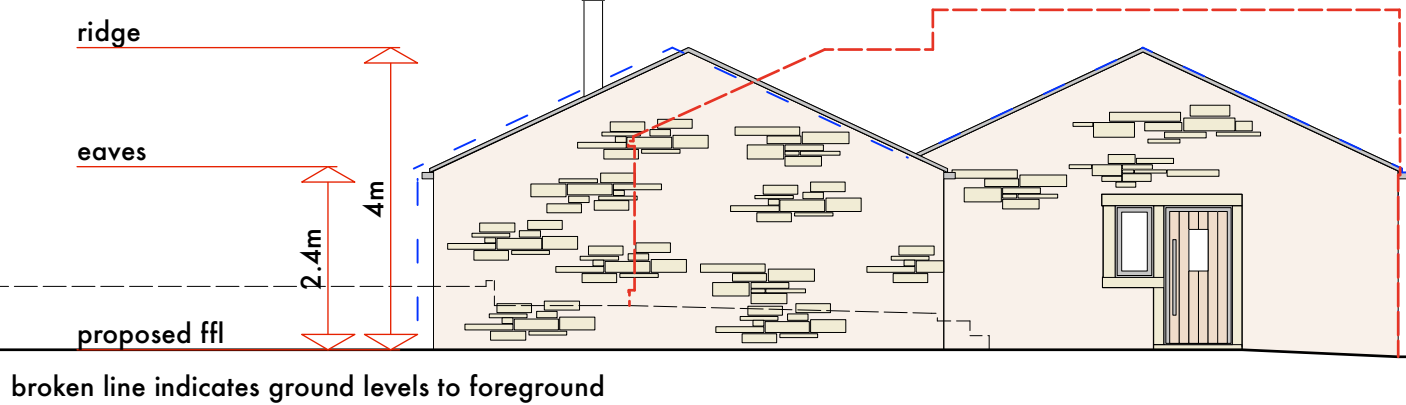


section A

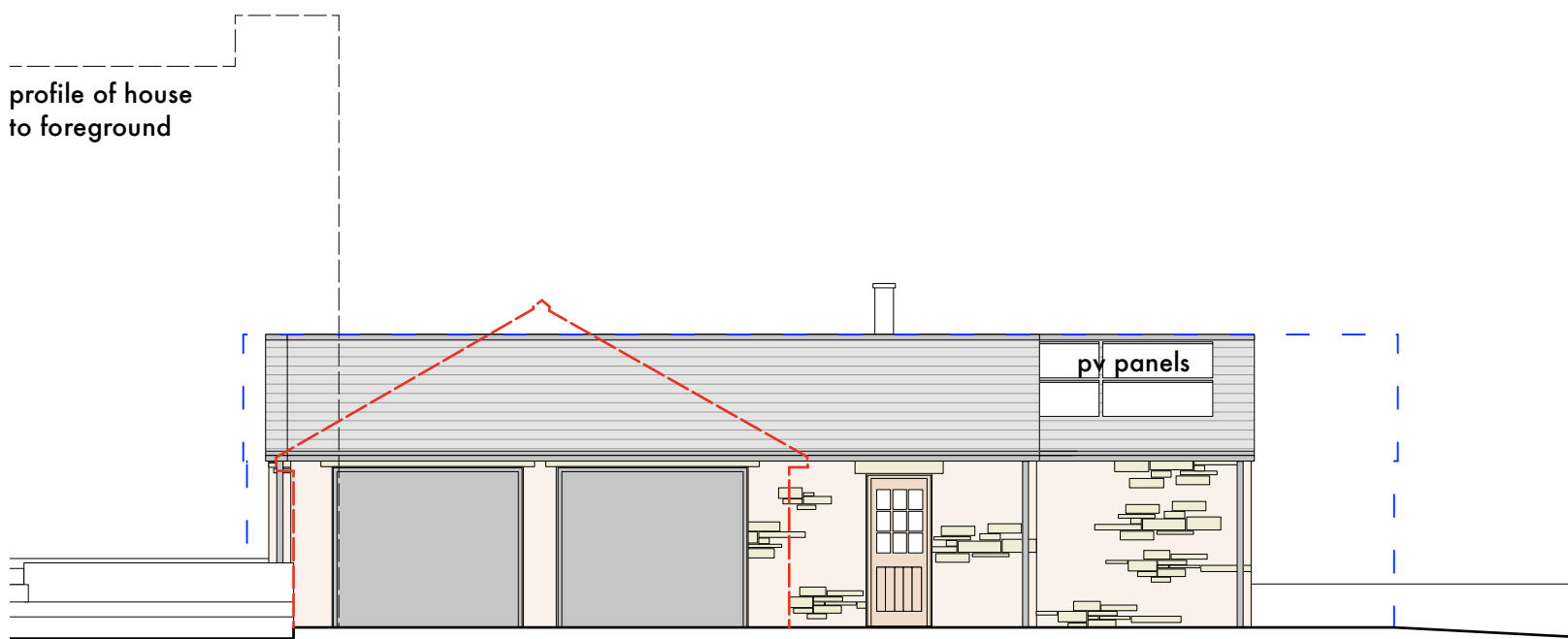
blue broken line indicates profile of previous scheme
red broken line indicates profile of existing outbuilding



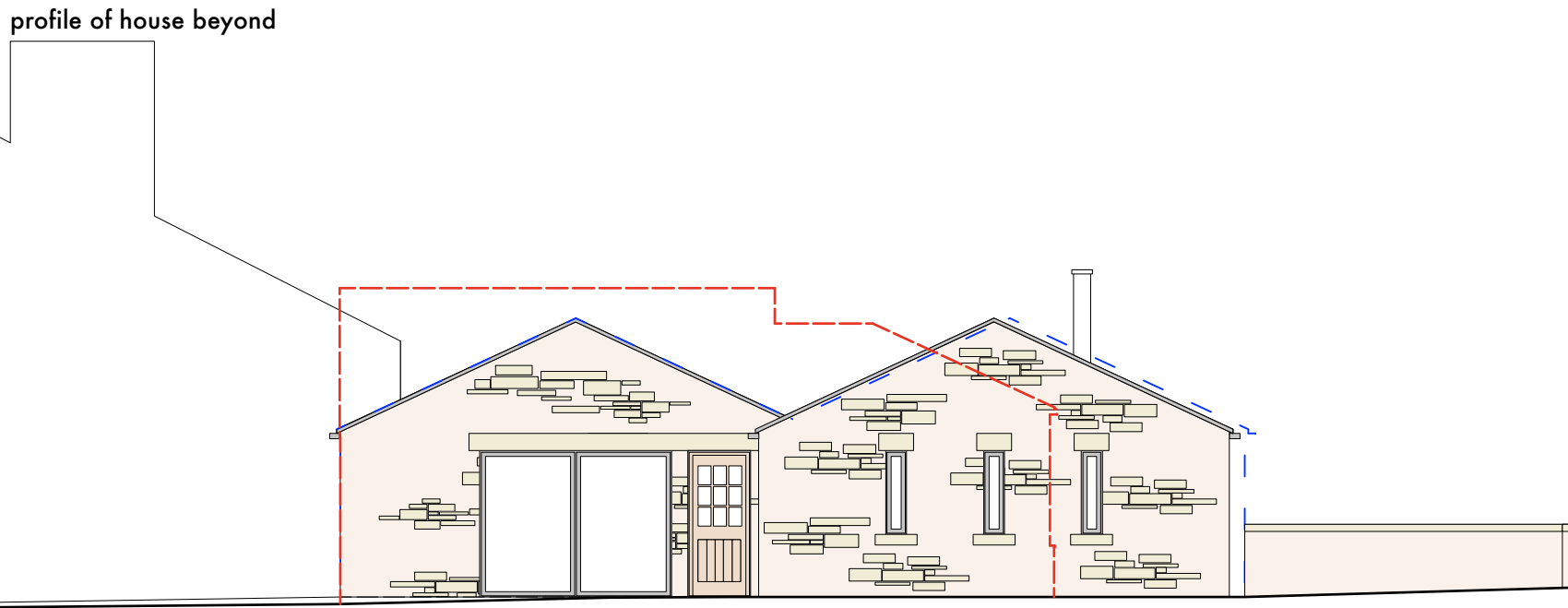
north west elevation



south west elevation



south east elevation

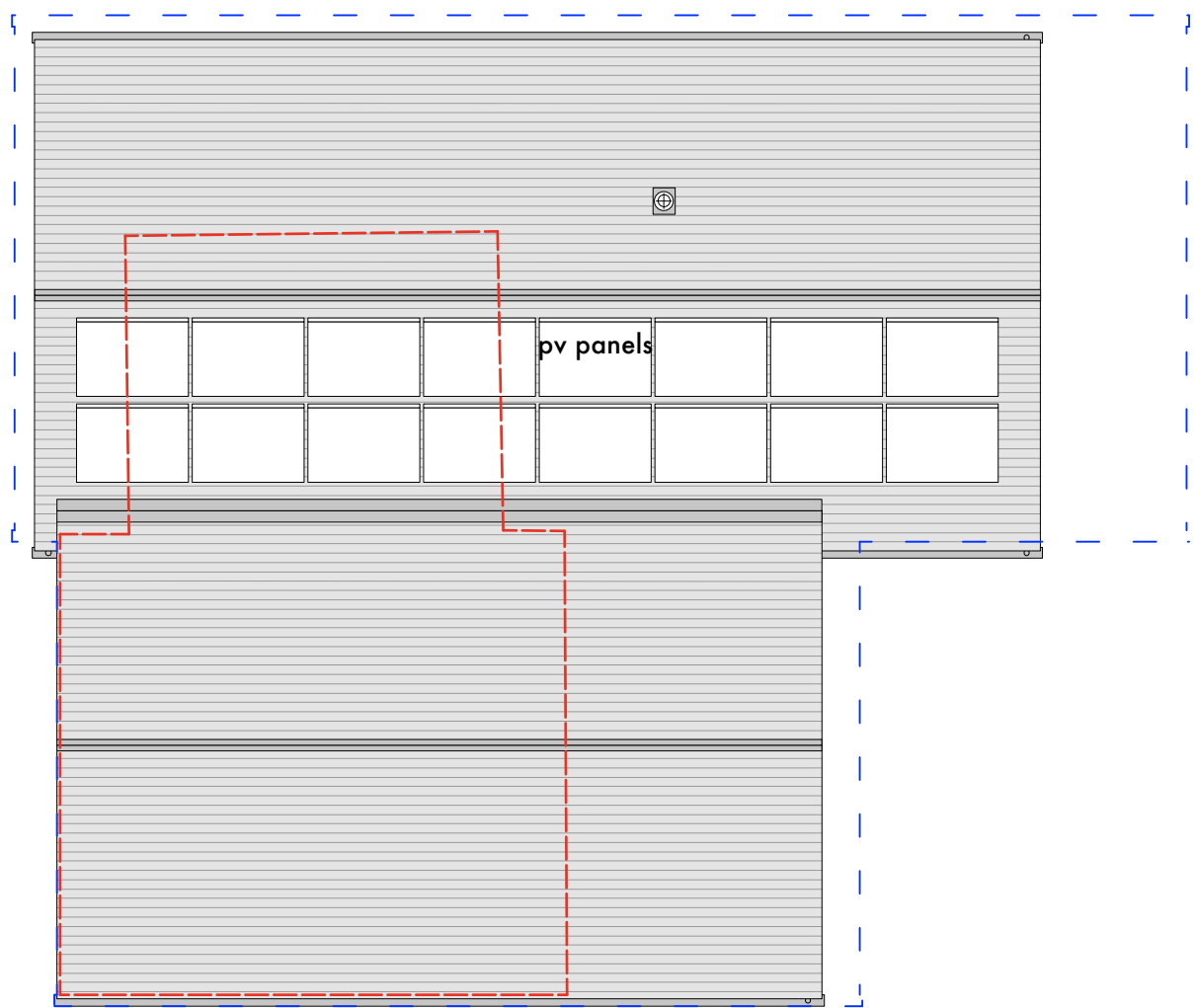


north east elevation

tree relocation

ID	Species	Stem diameter (mm)	Age (years)	Condition	General Observations
T1	decorative cedar/cypress fir tree	450	10-15	Moderate	Non-native tree (to be removed)
T2	ornamental cherry tree	150	10-15	Poor	Water logged (to be relocated)
T3	decorative cedar/cypress fir tree	550	10-15	Moderate	Non-native tree (to be removed)

broken red line indicates trees T1 and T3 to be removed. blue broken line indicates location of existing tree T2, solid blue line indicates proposed indicative relocation to boundary.



roof plan

