



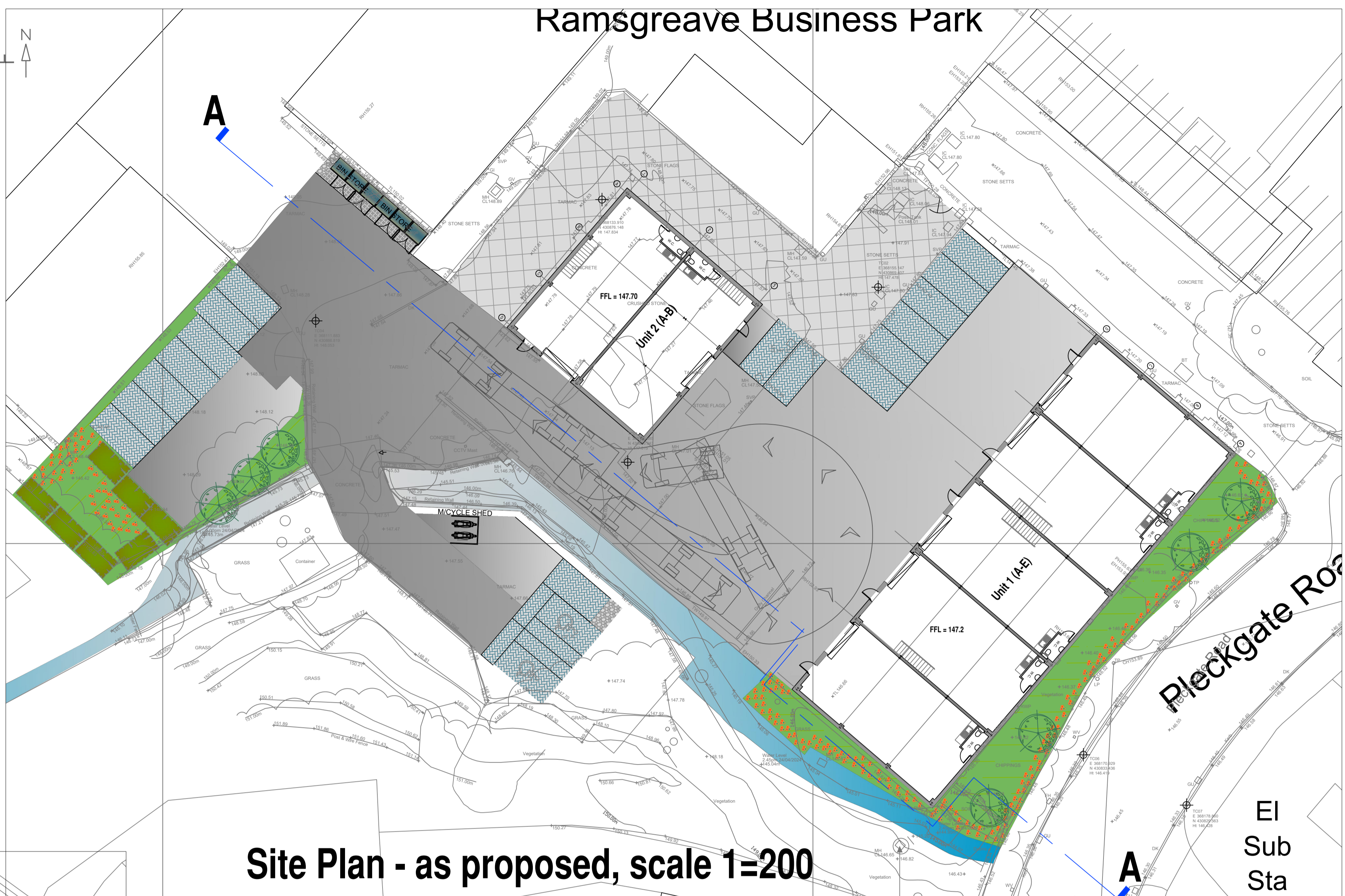
# Ramsgreave Business Park

## ACCOMMODATION SCHEDULE

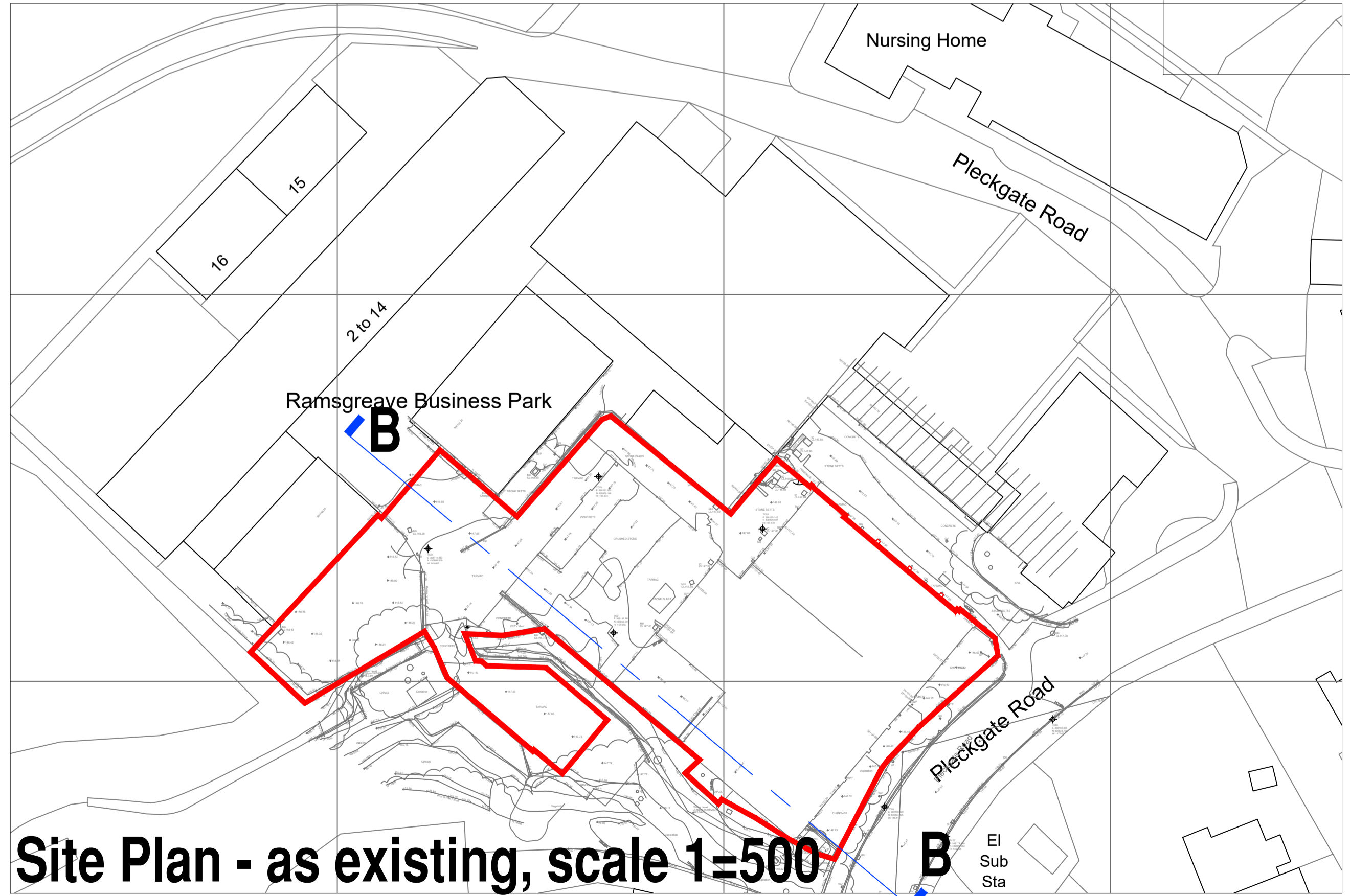
Unit 1A - 94.5 sq.m. + 36.5 sq.m. Mezz Floor  
 ( Total Floor Area = 1410 sq.ft.)  
 Unit 1B - 93.5 sq.m. + 36.5 sq.m. Mezz. Floor  
 ( Total Floor area = 1399 sq.ft.)  
 Unit 1C - 93.5 sq.m. + 36.5 sq.m. Mezz. Floor  
 ( Total Floor area = 1399 sq.ft.)  
 Unit 1D - 93.5 sq.m. + 36.5 sq.m. Mezz. Floor  
 ( Total Floor area = 1399 sq.ft.)  
 Unit 1E - 93 sq.m. + 36.5 sq.m. Mezz Floor  
 (Total Floor Area = 1394 sq.ft.)  
 (Total Floor Area , units A-E = 7000 sq.ft.)

Unit 2 A - 87.3 sq.m. + 44.7 sq.m. Mezz. Floor.  
 ( Total Floor Area = 1420 sq.ft.)  
 Unit 2 B - 87.3 sq.m. + 40 sq.m. Mezz. Floor  
 ( Total Floor area = 1370 sq.ft.)

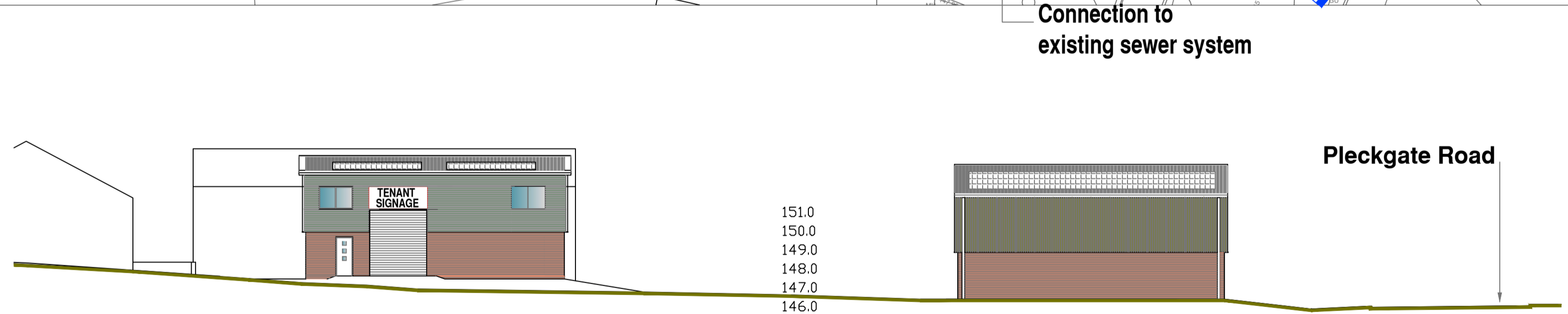
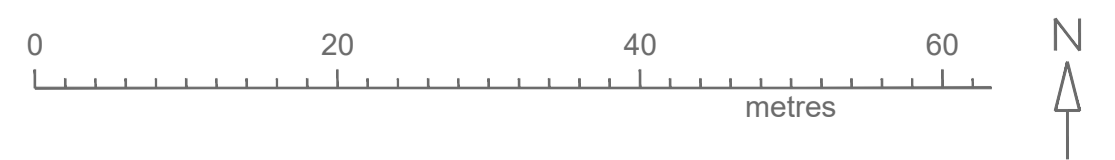
Total Floor Area (Unit 1 + 2) = 910 sq.m. (9795 sq.ft.)



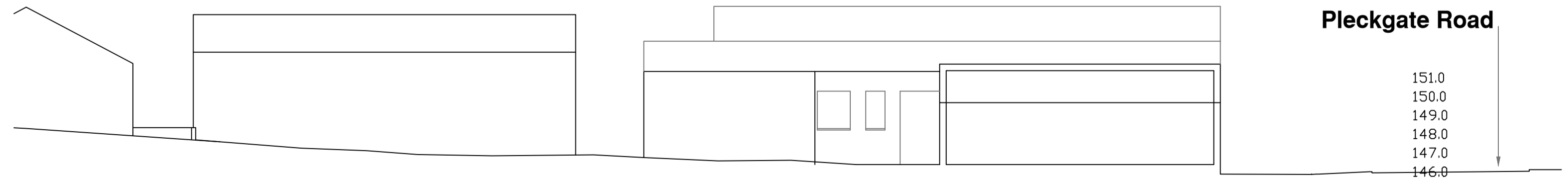
Site Plan - as proposed, scale 1=200



Site Plan - as existing, scale 1=500



Proposed Section AA, scale 1=200



Existing Section BB, scale 1=200

Connection to existing sewer system

Pleckgate Road

EI Sub Sta

Pleckgate Road

Pleckgate Road

B	Site Sections added	I.S.	16.05.24
A	Site Levels added	I.S.	30.04.24
Rev.			
PROJECT: Re-development Site, Ramsgreave Business Park			
DRAWING TITLE: Site Plan - Existing and Proposed			
CLIENT: ....			
<b>SCALES ARCHITECTURE</b>			
ARCHITECTURE		PLANNING	
P:\187-08 - 011111		I.S.	
12 Kings Close, Fulham, London, W14 7JH		e-mail: info@scases.com	
DRAWING NUMBER:	REVISION: B	DRAWN BY:	I.S.
187 - 08		SCALE AS SHOWN	
		DATE:	Apr '24