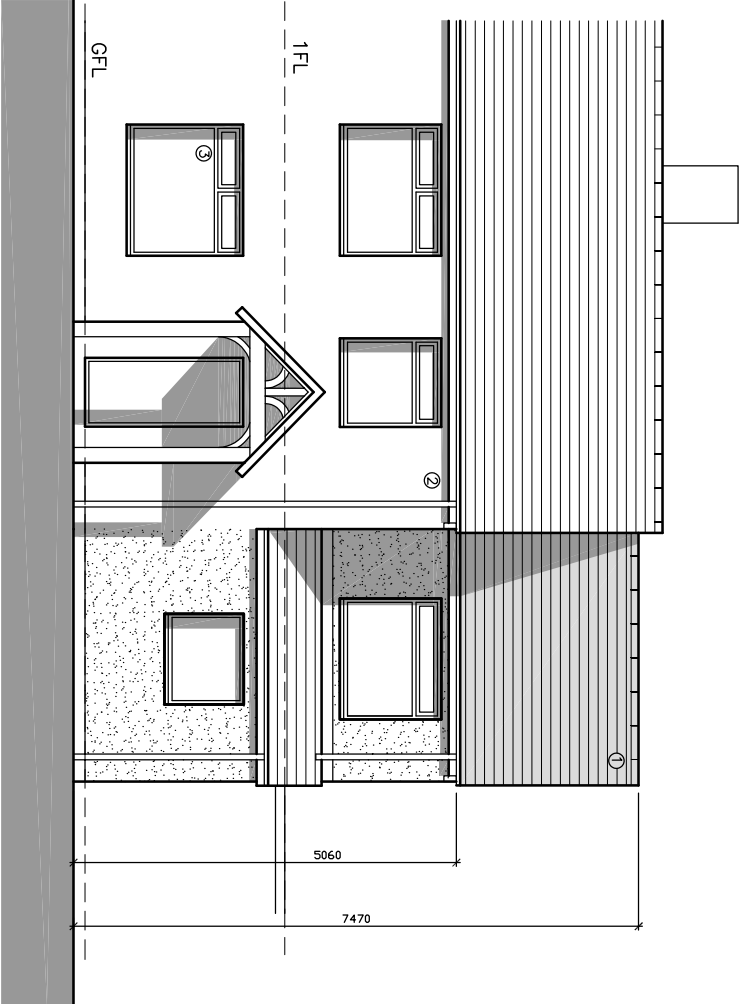
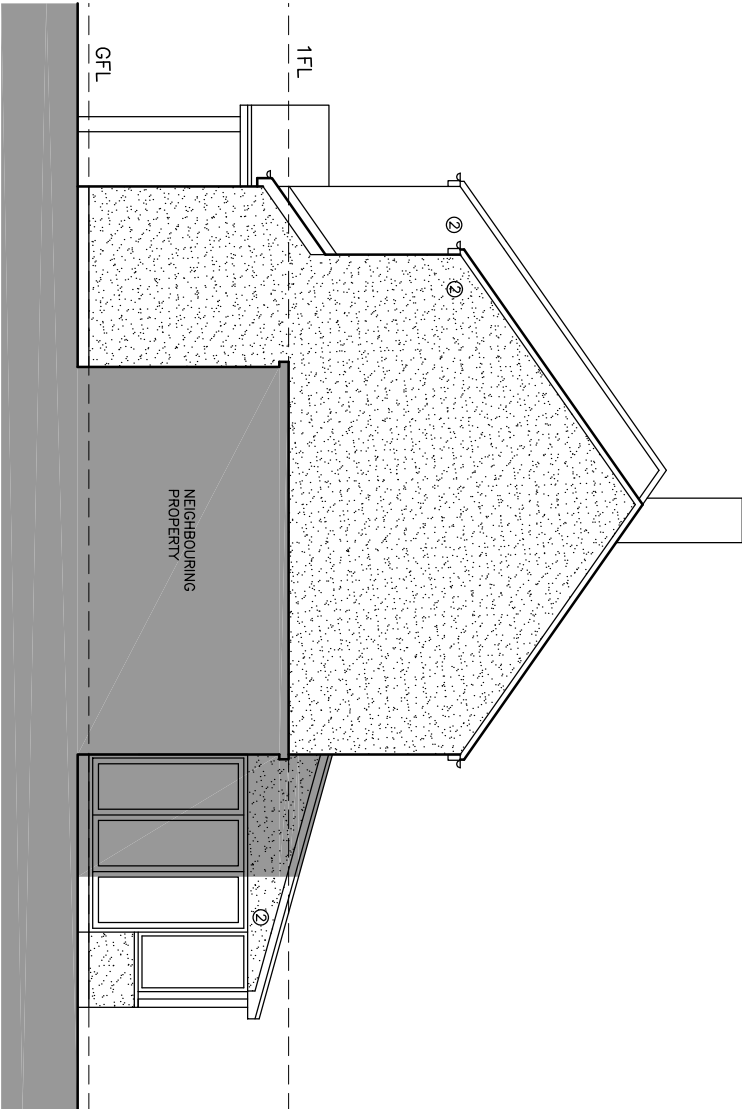


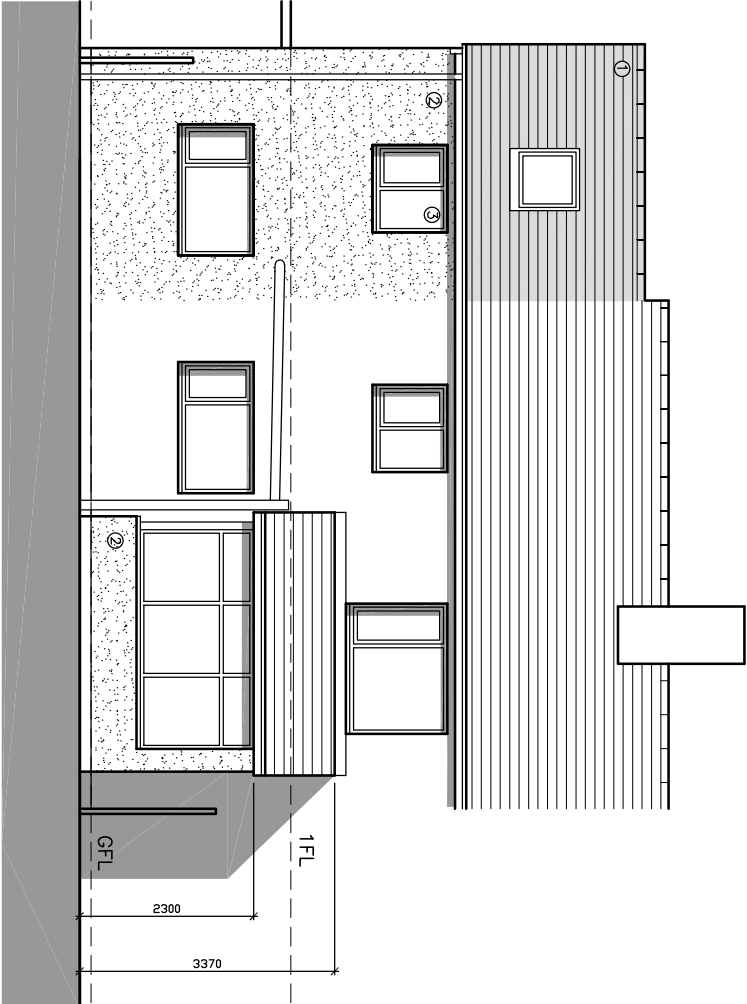
- MATERIALS
- INTERLOCKING CONCRETE TILES
 - SAND/CEMENT RENDER
 - UPVC WINDOWS/DOORS



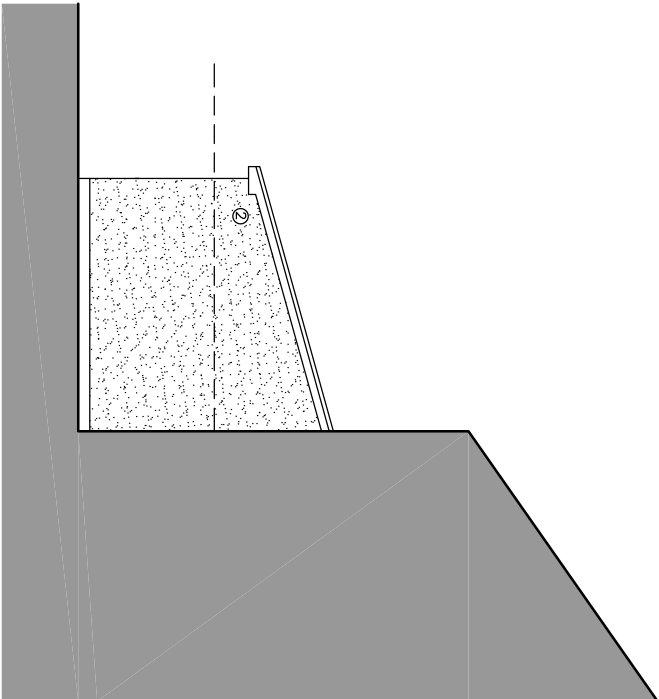
PROPOSED FRONT NORTH EAST ELEVATION (1)



PROPOSED FRONT NORTH WEST ELEVATION (2)



PROPOSED REAR SOUTH WEST ELEVATION (3)



PROPOSED FRONT SOUTH EAST ELEVATION (4)

<div><div><div>q+w+c</div><div>architects</div></div><div><div>Private Residential Housing Commercial Conservation Domestic</div><div>Tel: 01254 485848</div><div>Email: info@qwarchitects.com Web: www.qwarchitects.com</div></div><div><div>Robinson's Barn</div><div>Worston</div><div>Clitheroe</div><div>Lancs</div><div>B871QA</div></div><div><div>ARB</div><div>Architects Registration Board</div></div></div>				Client MR L CONTI		Scale 1:100	Sheet Size A3	Job Number 24-026	Drawn By AW	Checked AW
Project 18 QUEENSWAY WADDINGTON				Drawing Title PROPOSED ELEVATIONS		Drawing Status PLANNING		Drawing Number PL07	Revision A	First Issue -

©qw architects Ltd 2020 This Drawing is to be used in conjunction with all other project associated drawings and information. Drawings form this drawing. Report all errors, omissions and discrepancies to drawing office prior to construction or modification. This drawing is copyright and is the property of qw architects Ltd