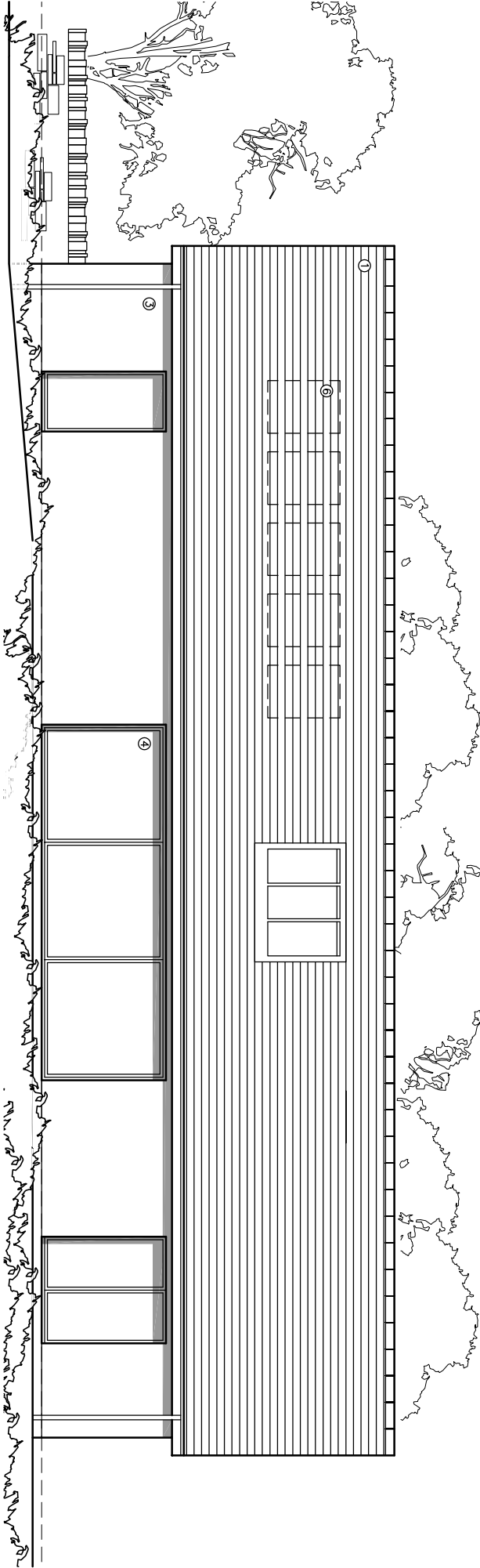
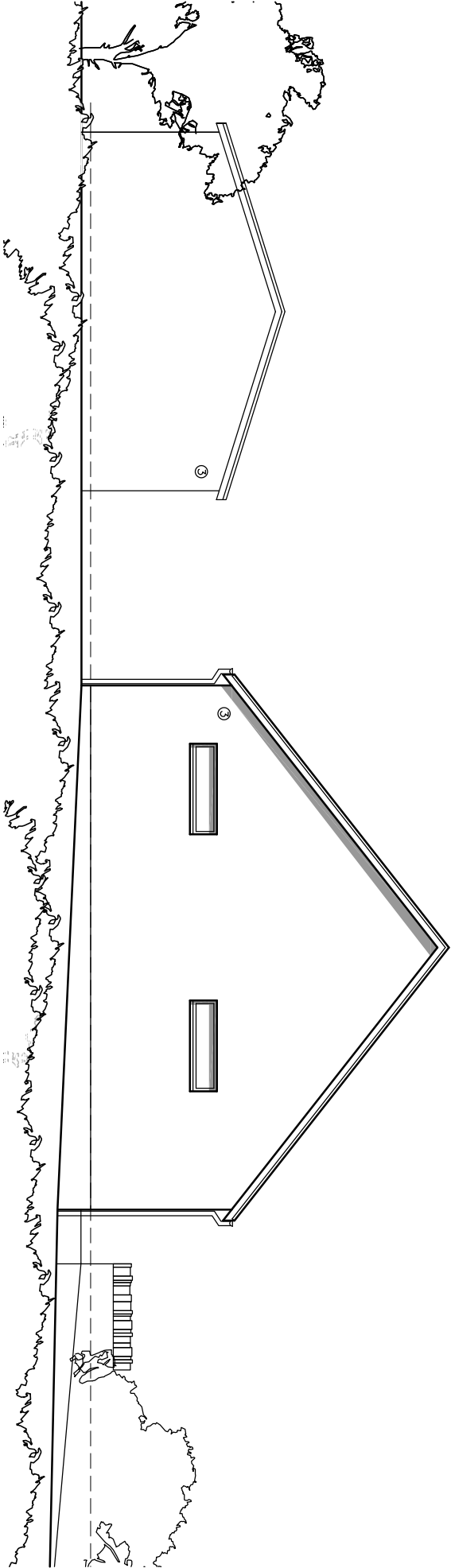


MATERIALS

- 1. GREY CONCRETE TILES
- 2. RANDOM COURSED NATURAL LOCAL STONE
- 3. SMOOTH 'K' RENDER
- 4. ALUMINIUM WINDOWS/DOORS
- 5. WESTERN CEDAR OR LARCH CLADDING
- 6. PHOTO VOLTALIC PANELS



PROPOSED SIDE (SOUTH) ELEVATION (1)



PROPOSED REAR (WEST) ELEVATION (4)

<div><div><div>q+w+c</div><div>architects</div></div><div><div>Private Residential Housing Commercial Conservation Domestic</div><div>Tel: 01254 485848</div><div>Email: info@q+w+architects.com Web: www.q+w+architects.com</div></div><div><div>Robinson's Barn</div><div>Weston</div><div>Clitheroe</div><div>LANCS</div><div>B871QA</div></div><div><div>ARB</div><div>Architects Registration Board</div></div></div>				<div><div>Client</div><div>MR & MRS CONNELL</div></div> <div><div>Drawing Title</div><div>PROPOSED NEW DWELLING</div><div>STUBBINS LANE, SABDEN</div></div>				<div><div>Scale</div><div>1:100</div></div> <div><div>Drawing Title</div><div>PROPOSED ELEVATIONS 2</div></div>				<div><div>Sheet Size</div><div>A3</div></div> <div><div>Drawing Status</div><div>PLANNING</div></div>				<div><div>Job Number</div><div>24-036</div></div> <div><div>Drawing Number</div><div>PL07</div></div> <div><div>Drawn By</div><div>AW</div><div>Checked</div><div>AW</div></div> <div><div>Revision</div><div>E</div><div>First Issue</div><div>-</div></div>			
--	--	--	--	---	--	--	--	---	--	--	--	---	--	--	--	---	--	--	--

©q+w+architects Ltd 2020 | This Drawing is to be used in conjunction with all other project associated drawings and information. Drawings form this drawing. Report all errors, omissions and discrepancies to drawing officer prior to construction or modification. This drawing is copyright and is the property of q+w+architects. Ltd