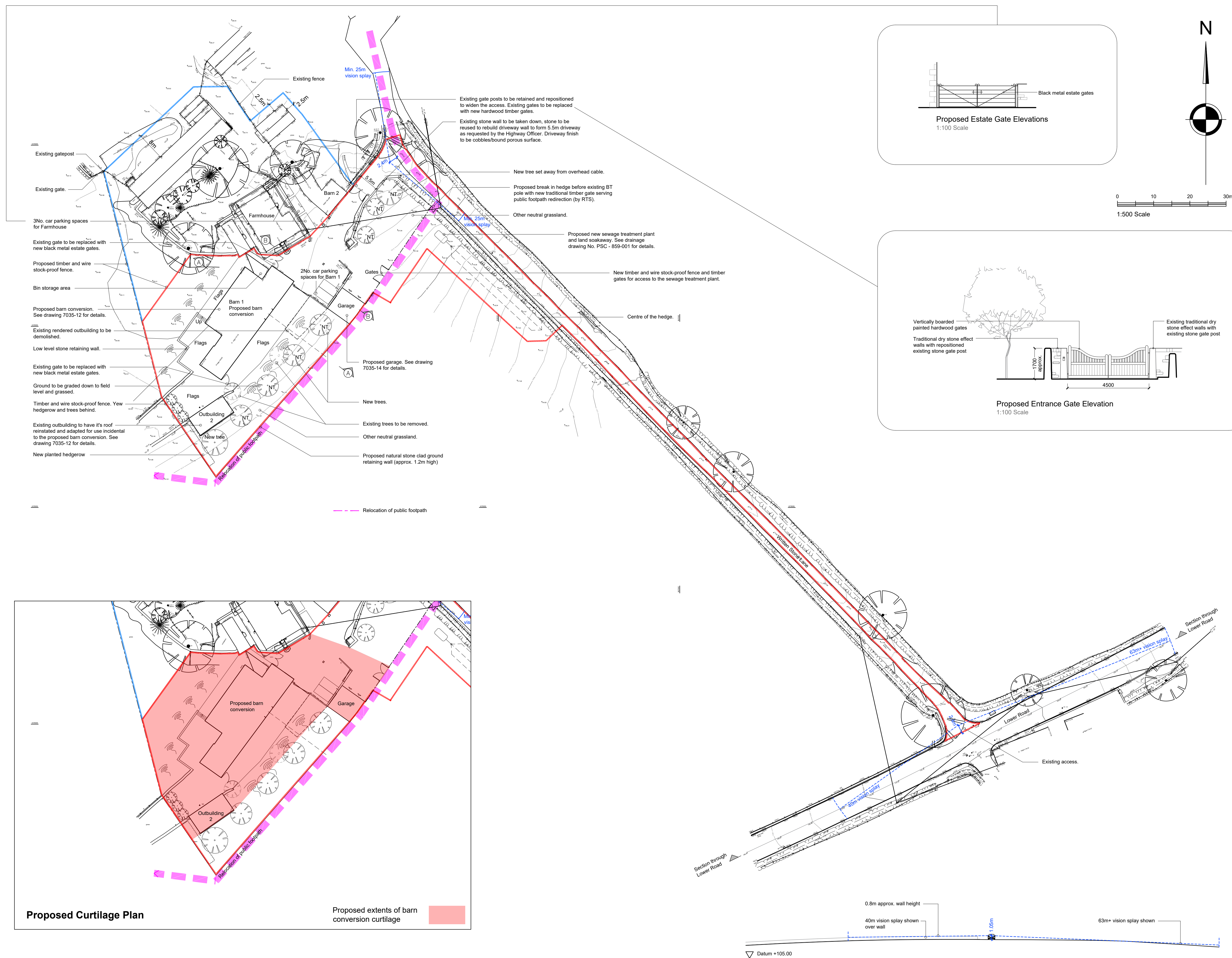


This drawing is to be read in conjunction with all relevant Architect, consultants' and specialists' drawings and specifications. The Architect is to be notified of any discrepancies before proceeding. Do not scale from this drawing. All dimensions and levels are to be checked on site. This drawing is subject to copyright. All work carried out before Planning and Building Permission has been granted is at the contractor/client's risk.



REVISIONS:

Rev A - Amended for planning. - 12.06.2024 - NE

Rev B - Outbuilding labeled. - 18.06.2024 - NE
Rev C - Driveway and tree positioning amended

Soakaway amended. - 20.06.2024 - NE

Rev D - Bin storage and collection areas shown.
25.06.2024 - NE

Rev E - Vision splays indicated. - 15.08.2024 - NE

Rev F - Vision plays amended, - 19.08.2024 - NE
Rev G - Vision plays amended, 20.08.2024 - NE

Rev H - Amended following planning dept/highway

comments. - 07.11.2024 - NE
 Rev. J. Note omitted. 12.11.2024. NE

Rev K - Wildflower meadow omitted. BDNG areas

indicated. - 05.12.2024 - NE

Norris and Hargreaves-Norris

Job Title
Written Stone Farm
Written Stone Lane
Longridge

Drawing Title
Proposed Site Plan

FOR PLANNING

Scale	Date	Drawn by
1:500 @ A1	May 2024	N

spac
ACOCK ARCHITECTS

SUNDERLAND PEACOCK & ASSOCIATES LTD
HAZELMERE, PIMLICO ROAD, CLITHEROE
LANCASHIRE, BB7 2AG
T 01200 423178 F 01200 427328
E info@sunderlandpeacock.com
www.sunderlandpeacock.com



7035 - 11

Rev
K