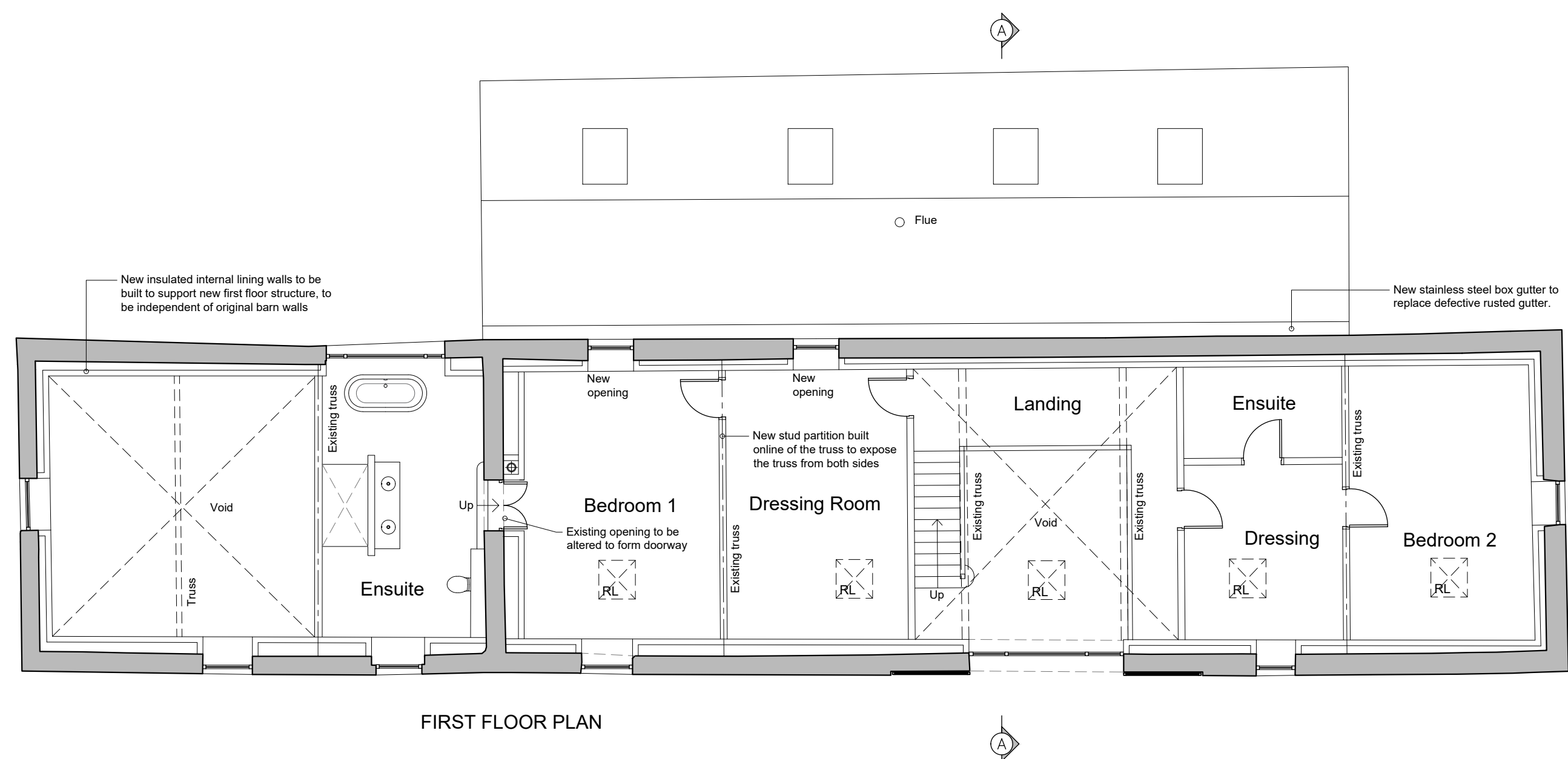
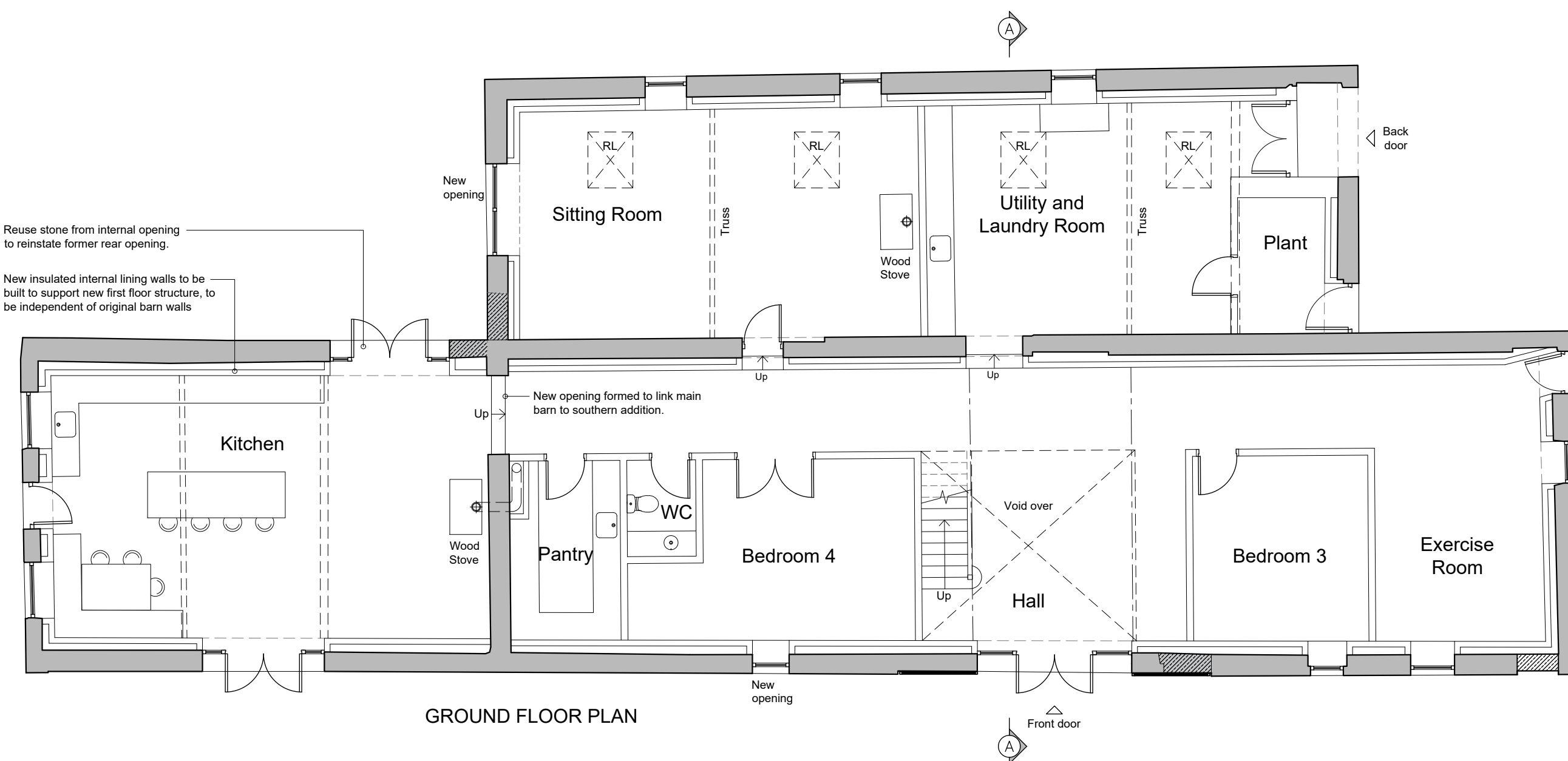
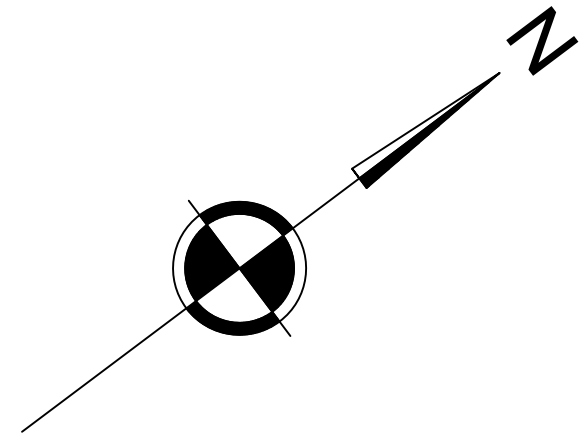
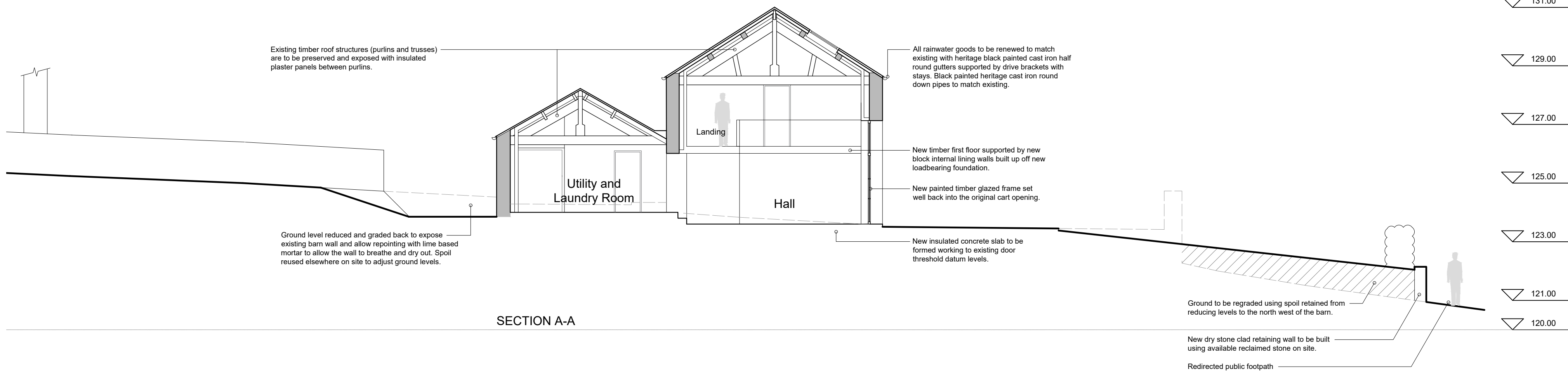
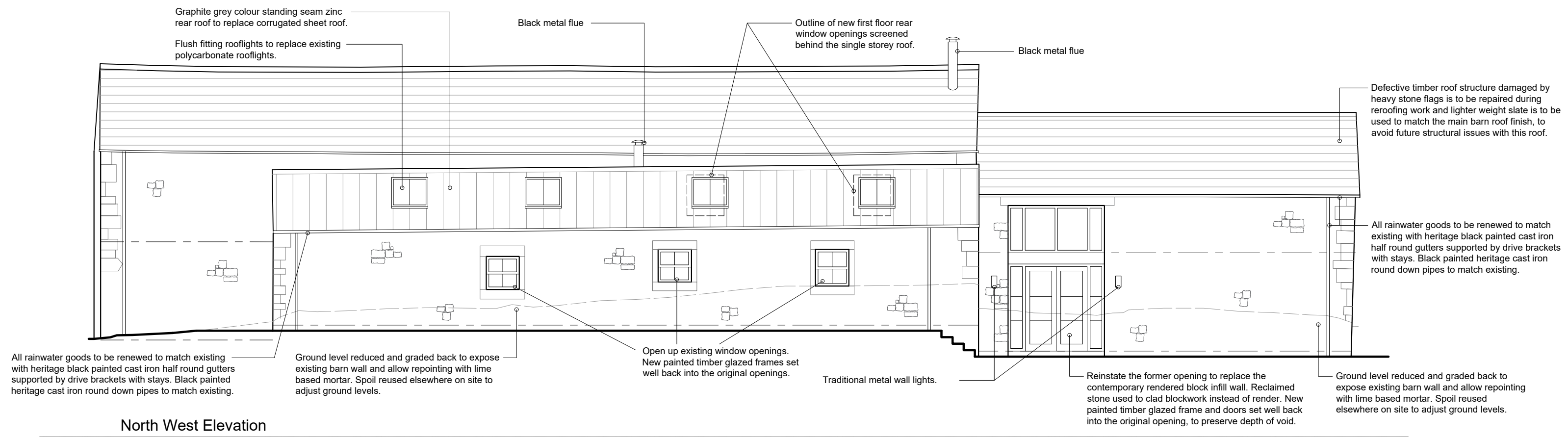
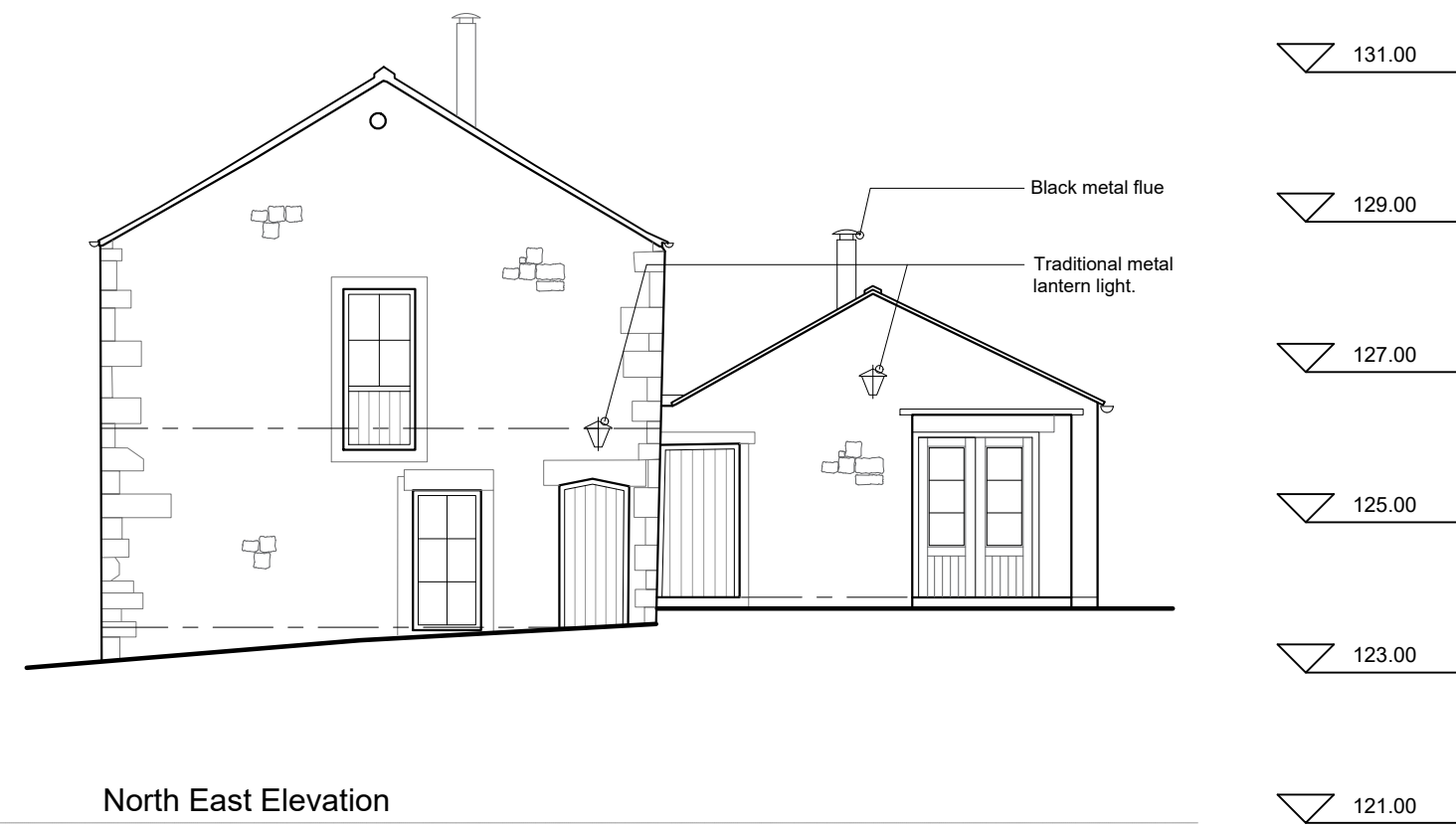
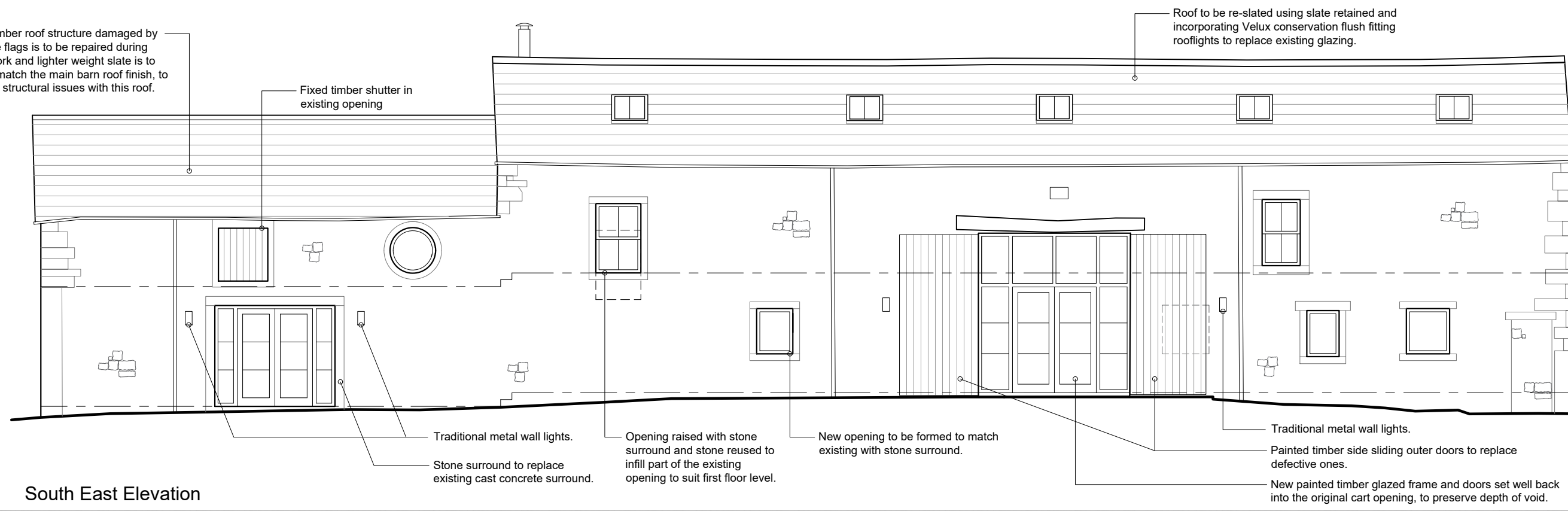
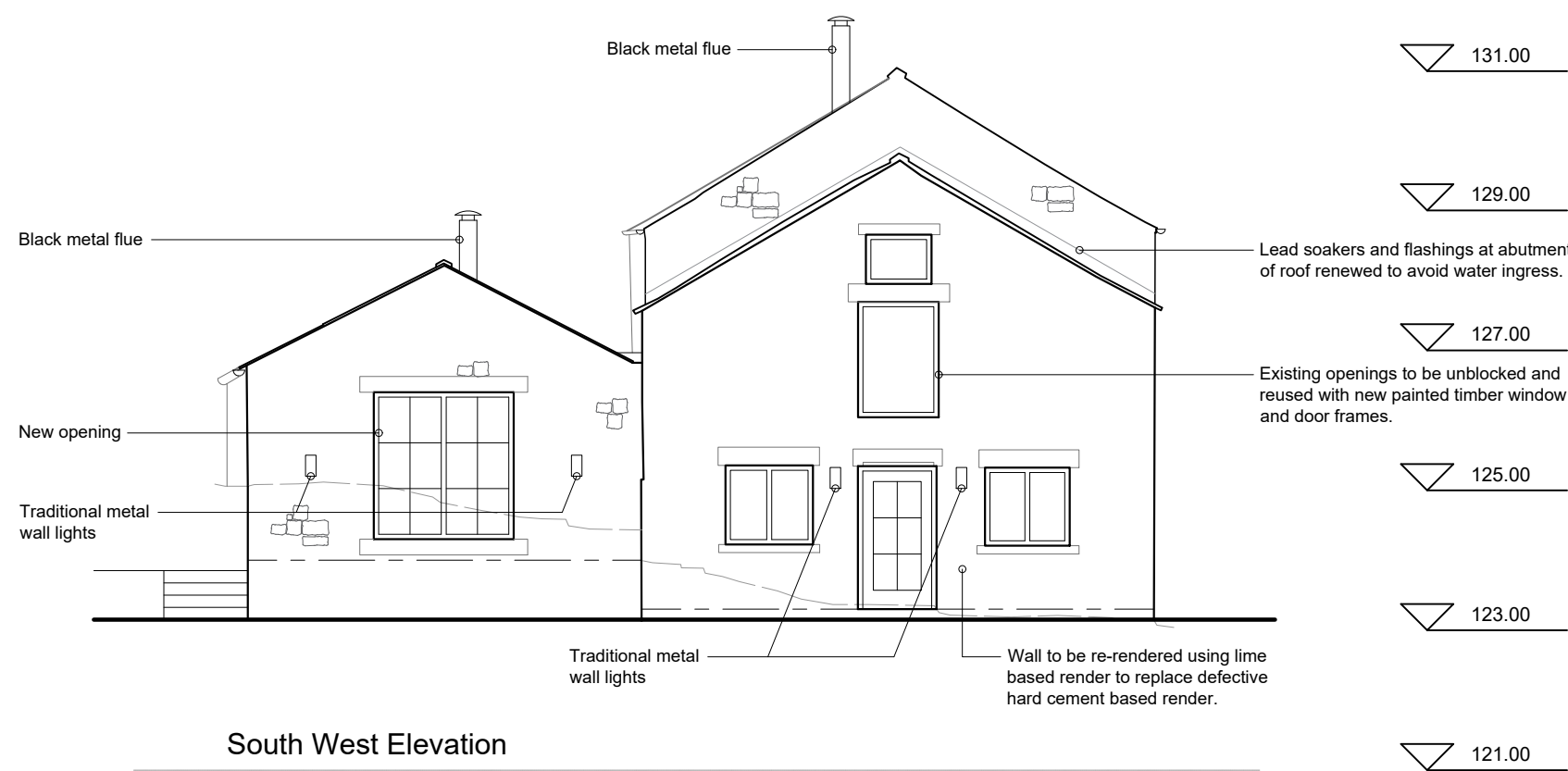


Note: proposed drawing based on OS dwg information. All illustrated dimensions are approximate and all site dimensions are to be checked on site and subject to site survey.



**REVISIONS:**

**Rev A** - Sketch scheme plans. - DATE - SGH  
**Rev B** - Draft planning proposal. - 15.04.2024 - NE  
**Rev C** - Section extents extended. - 31.05.2024 - NE  
**Rev D** - Internal SPA review. - 05.06.2024 - NE  
**Rev E** - Amended for planning. - 12.06.2024 - NE  
**Rev F** - Annotation amended. - 18.06.2024 - NE  
**Rev G** - Annotation amended. - 20.06.2024 - NE  
**Rev H** - Sheet title amended. - 15.08.2024 - NE

Norris and Hargreaves-Norris

Job Title	
-----------	--

Written Stone Farm  
Written Stone Lane  
Longridge

Drawing Title

**Barn 1 - Proposed Plan, Elevations  
and Section**

**FOR PLANNING**

Scale	Date
1:100@ A1	April 2024

spac  
EACOCK ARCHITECT

SUNDERLAND PEACOCK & ASSOCIATES LTD.  
HAZELMERE, PIMLICO ROAD, CLITHEROE  
LANCASHIRE, BB7 2AG  
T 01200 423178 F 01200 427328  
E [info@sunderlandpeacock.com](mailto:info@sunderlandpeacock.com)  
[www.sunderlandpeacock.com](http://www.sunderlandpeacock.com)



7035 - 07

Rev  
H