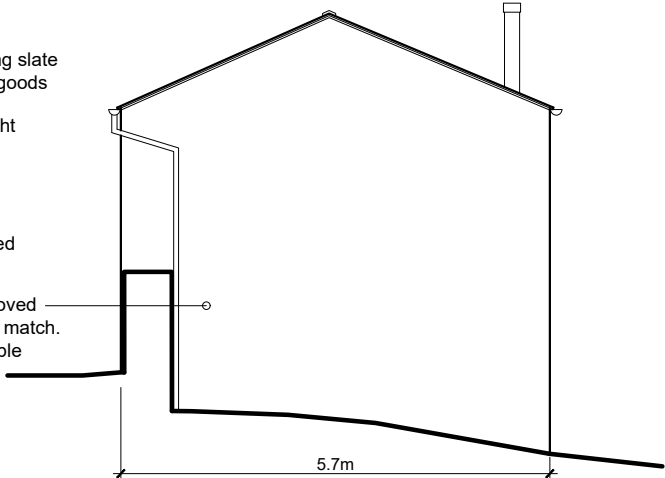
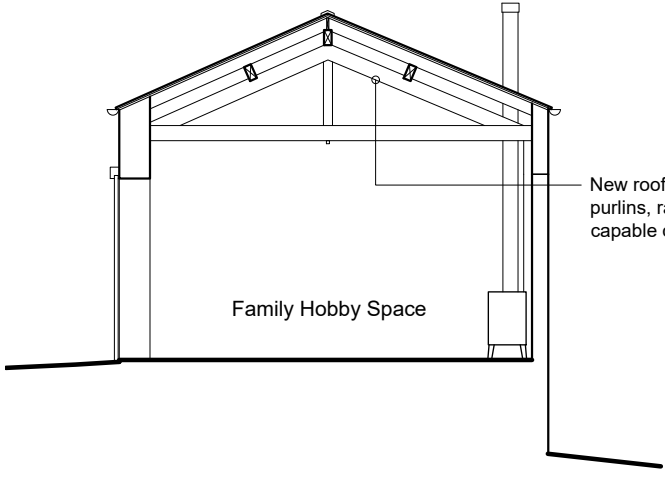


North West Elevation

- Missing roof reinstated using slate with black metal rainwater goods
- Traditional metal lantern light over the door
- Sliding painted timber barn door with black metal track
- Stone surrounds and painted timber window frames
- Defective render to be removed and repaired with render to match. To be painted with breathable masonry paint.

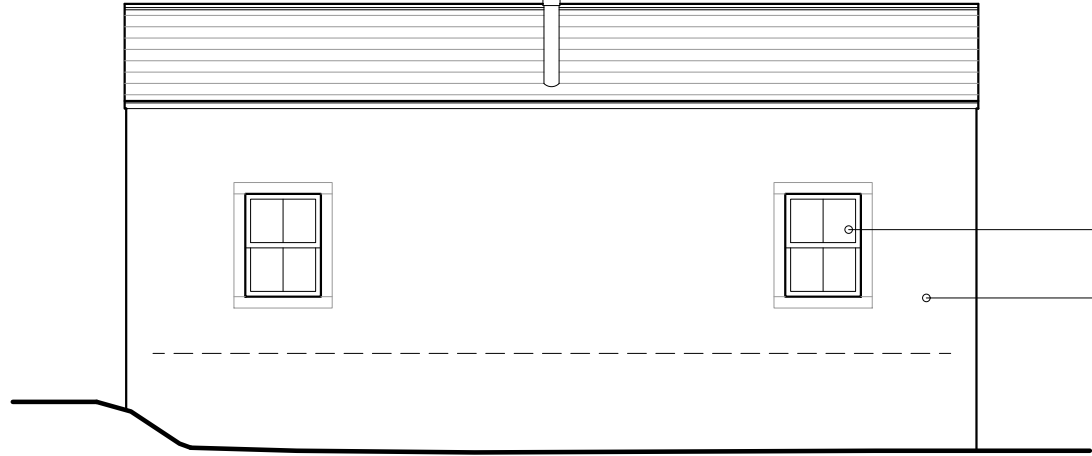
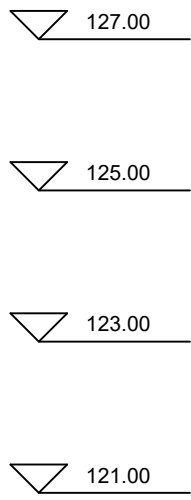


South West Elevation



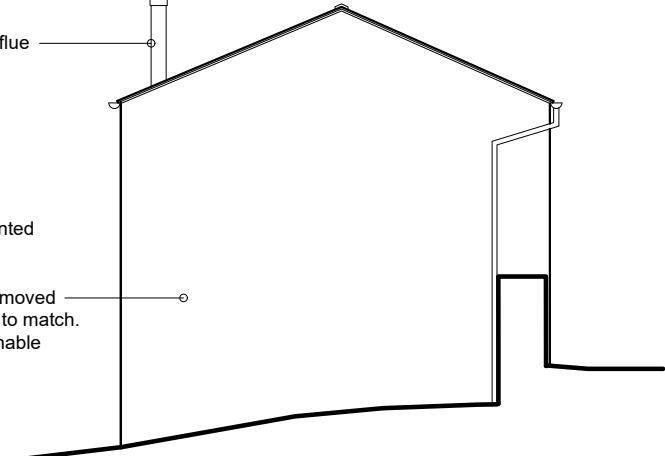
Section C-C

- New roof structure (trusses, purlins, rafters, felt and battens) capable of supporting a slate roof



South East Elevation

- Matt black colour s/steel flue
- Stone surrounds and painted timber window frames
- Defective render to be removed and repaired with render to match. To be painted with breathable masonry paint.



North East Elevation

**REVISIONS:**  
**Rev A** - Amended for planning. - 12.06.2024 - NE  
**Rev B** - Annotation amended. - 18.06.2024 - NE  
**Rev C** - Dimensions added. - 25.06.2024 - NE

Client  
Norris and Norris - Hargreaves

Job Title  
Written Stone Farm  
Written Stone Lane  
Longridge

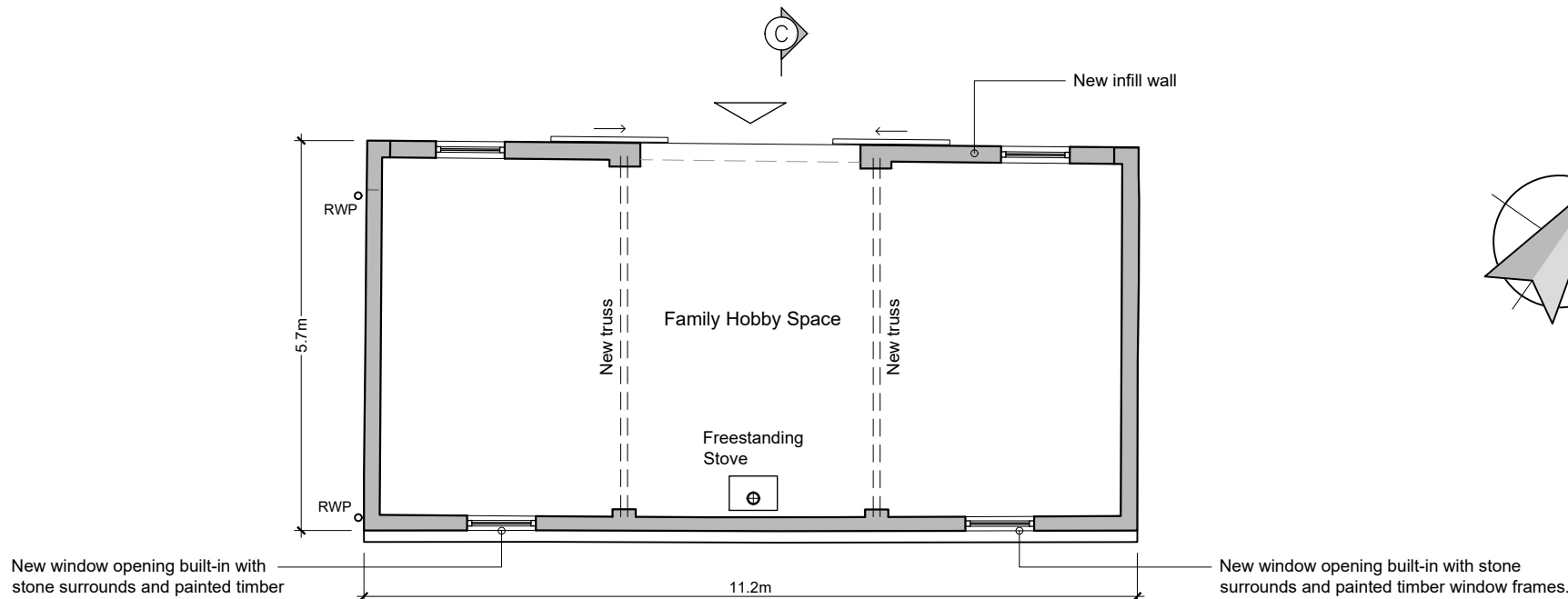
Drawing Title  
Proposed Outbuilding 2  
Plan, Elevations and Section

**FOR PLANNING**  
Scale: 1:100 @ A2 Date: May 2024 Drawn: NE

**spa** ARCHITECTS  
SUNDERLAND PEACOCK & ASSOCIATES LTD.  
HAZELMERE, PINLICO ROAD, CLITHEROE  
LANCASHIRE, B87 2AG  
T 01200 423178 F 01200 427328  
E info@sunderlandpeacock.com  
www.sunderlandpeacock.com



7035 - 12 Rev C



Outbuilding 2 Ground Floor Plan

- New window opening built-in with stone surrounds and painted timber window frames.

- New window opening built-in with stone surrounds and painted timber window frames.