



Designed for: Light and medium use
Use: Indoor and outdoor
Variants: Top, in-floor and fascia mount
Applications: Balconies, galleries, walkways, dividers, stairs and Juliet balconies
Material: Aluminium (mill finish and brushed anodised)
Glass thickness: 17,52 - 21,52 mm

Find all information about Easy Glass Smart+ online:



<https://q-ne.ws/SmartPlus23>

Mount 17,52 - 21,52 mm glass quickly and easily

Looking for a solution that lets you quickly mount laminated glass of 17,52 - 21,52 mm thickness and also gives you the ability to align each glass panel individually? Easy Glass® Smart+ is the answer. As with Easy Glass® Smart, you just have to mount the base channel, position the glass and – with just one hand movement – securely align each panel and fix it in place.

Easy Glass® Smart+

Max. line loads (kN/m)

UK

0,74

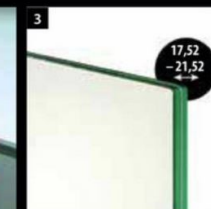
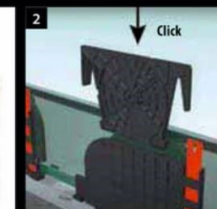
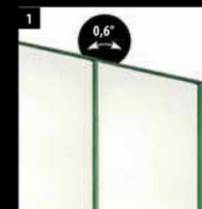


Please refer to the respective certifications for specifications of base channels, mounting details, glass sizes and specification.

Internationally tested/calculated/certified:



- 1 With the adjustable Q-disc System, you can realign individual glass panels by up to 0,6° from the vertical.
- 2 Q-disc gives you clear feedback in the form of 'clicks' that confirm correct installation.
- 3 Suitable for laminated glass with a thickness of 17,52 - 21,52 mm.



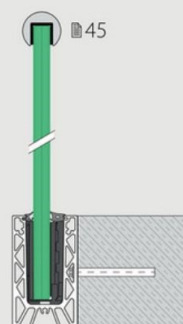
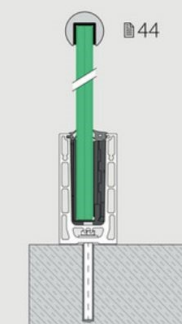
EASY GLASS® SMART+ VARIANTS

**Smart+
Top mount**

- Also for in-floor mounting

**Smart+
Fascia mount**

- Also for mounting on the inner side of parapet walls
- Base channel cladding available



COMING SOON

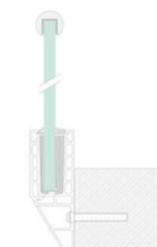
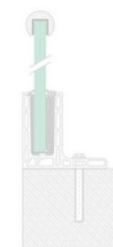
F and Y base channels

**Smart+ F
Top mount**

- For unfinished floors
- Can be installed at or beyond the edge of a surface

**Smart+ Y
Fascia mount**

- For unfinished floors
- Can be installed at or beyond the edge of a surface



EASY GLASS® SMART+



red dot winner 2020
innovative product