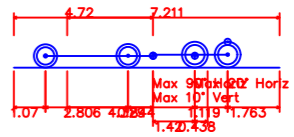
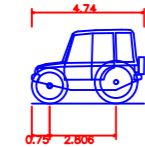




Vehicle Used in the Swept Paths Analysis



Farm tractor & trailer
Overall Length 9.022m
Overall Width 2.500m
Overall Body Height 0.438m
Min Body Ground Clearance 0.398m
Max Track Width 2.500m
Lock to lock time 4.00s
Kerb to Kerb Turning Radius 4.620m



Case IH CVX 160 Tractor
Overall Length 4.740m
Overall Width 2.550m
Overall Body Height 3.117m
Min Body Ground Clearance 0.520m
Max Track Width 2.520m
Lock to lock time 6.00s
Kerb to Kerb Turning Radius 5.400m

Notes

- Vehicle includes farm tractor, 4.7m long and farm trailer.

Revisions

Client

Mr D. Parkin



Scheme

Agricultural Building, Longridge Road, Chipping

Title

Swept Paths - Tractor & Trailer

Drawn

N.Peet

Checked

M.Peet

Date

9.1.2025

Project

601-24

Drawing No

601-24-1

Scale

1:500 @ A1